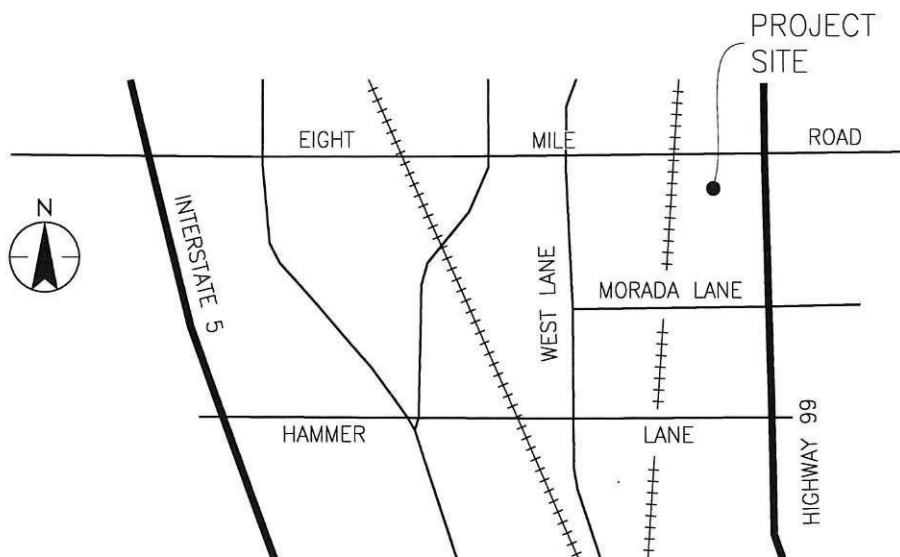


EXHIBIT B



VICINITY MAP
NOT TO SCALE

PROPERTY LIST:

PROPERTIES OWNED BY:
HOLMAN INVESTORS, LLC
3400 EAST EIGHT MILE ROAD, SUITE A
STOCKTON, CA 95212
APN 122-020-17, 19, 20, 57, 32, 33, 35, 38 & 60

SHEET INDEX:

1. VICINITY MAP AND NOTES
2. EASEMENT NO. 1
3. EASEMENT NO. 2
4. EASEMENT NO. 3

LEGEND:

EX EXISTING
COS CITY OF STOCKTON
SJC SAN JOAQUIN COUNTY
POB-1 POINT OF BEGINNING OF AREA NO. 1
POC POINT OF COMMENCING
(R) RADIAL
SF SQUARE FEET
AC ACRE
PROP PROPOSED
COC CERTIFICATE OF CORRECTION
SJCR SAN JOAQUIN COUNTY RECORDS



Kaiser Isaac Shahbaz
1/08/2024

REFERENCES:

- (R1) BOOK 40 M.&P., PAGE 51, AS AMENDED BY COC 06-04, DN 2006-081669, SJCR
(R2) BOOK 44 M.&P., PAGE 46, SJCR

BASIS OF BEARINGS:

BASED ON THAT CERTAIN MAP ENTITLED "TRACT NO. 3465 OF CANNERY PARK UNIT NO. 1" AS FILED IN BOOK 40 OF MAPS AND PLATS, AT PAGE 51, SAN JOAQUIN COUNTY RECORDS.

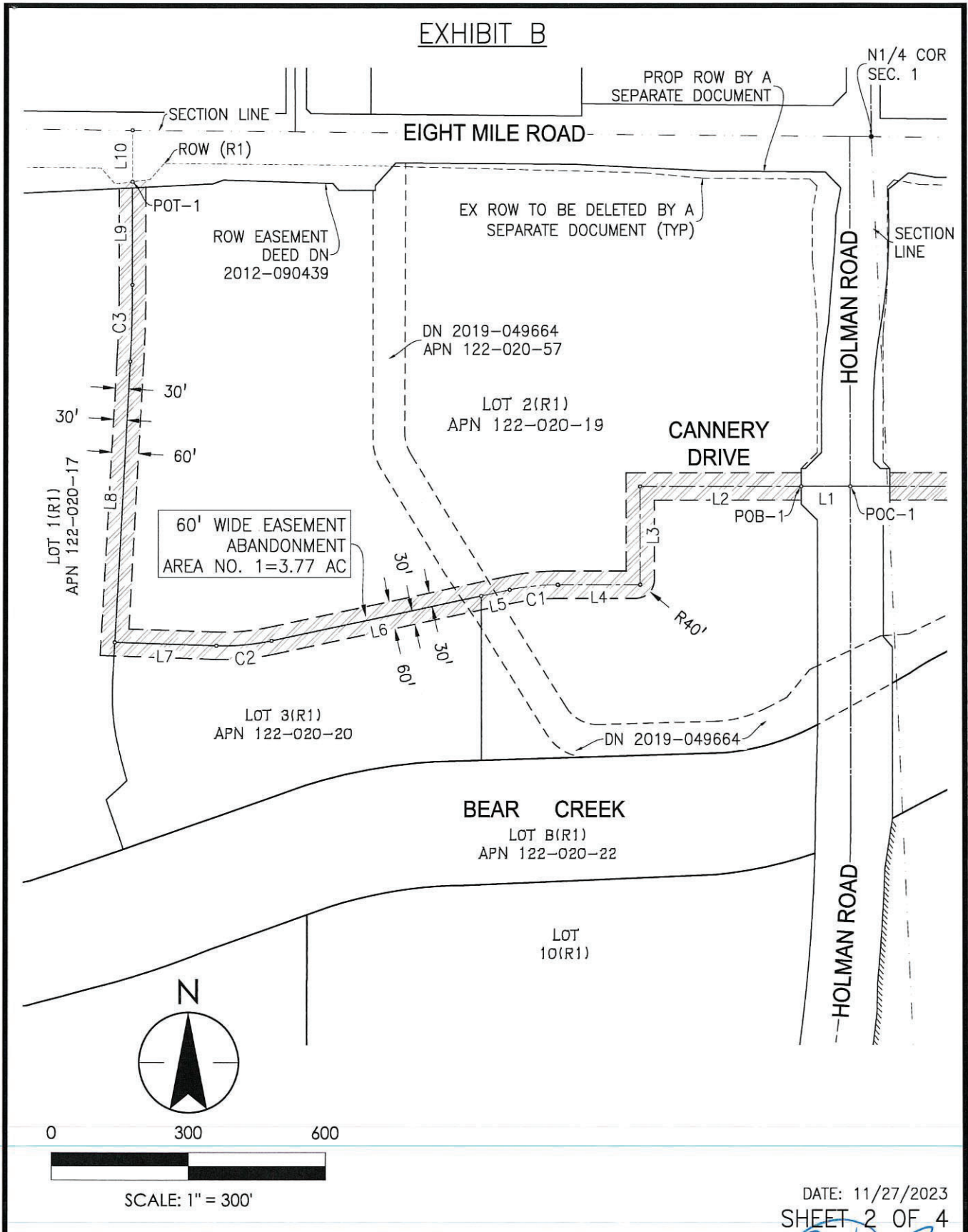
BEING A PORTION OF SECTION 1, TOWNSHIP 2 NORTH, RANGE 6 EAST, MOUNT DIABLO MERIDIAN,
, CITY OF STOCKTON, COUNTY OF SAN JOAQUIN, STATE OF CALIFORNIA

DATE: 11/27/2023
SHEET 1 OF 4

REV. NO.	REV. DATE	REV. BY	PUBLIC UTILITY EASEMENT ABANDONMENT CANNERY PARK UNIT NO. 1 & UNIT NO. 12 PORTION OF APN 122-020-17, 19, 20, 57, 32, 33, 35, 38 & 60	APPROVED BY <i>Kaiser Isaac Shahbaz</i>
DIGITIZED				CITY ENGINEER
DWG. BY	SCALE		CITY OF STOCKTON	DATE
CK. BY			DEPARTMENT OF PUBLIC WORKS	DRAWING NO.

1/22/24
4769.1A

EXHIBIT B



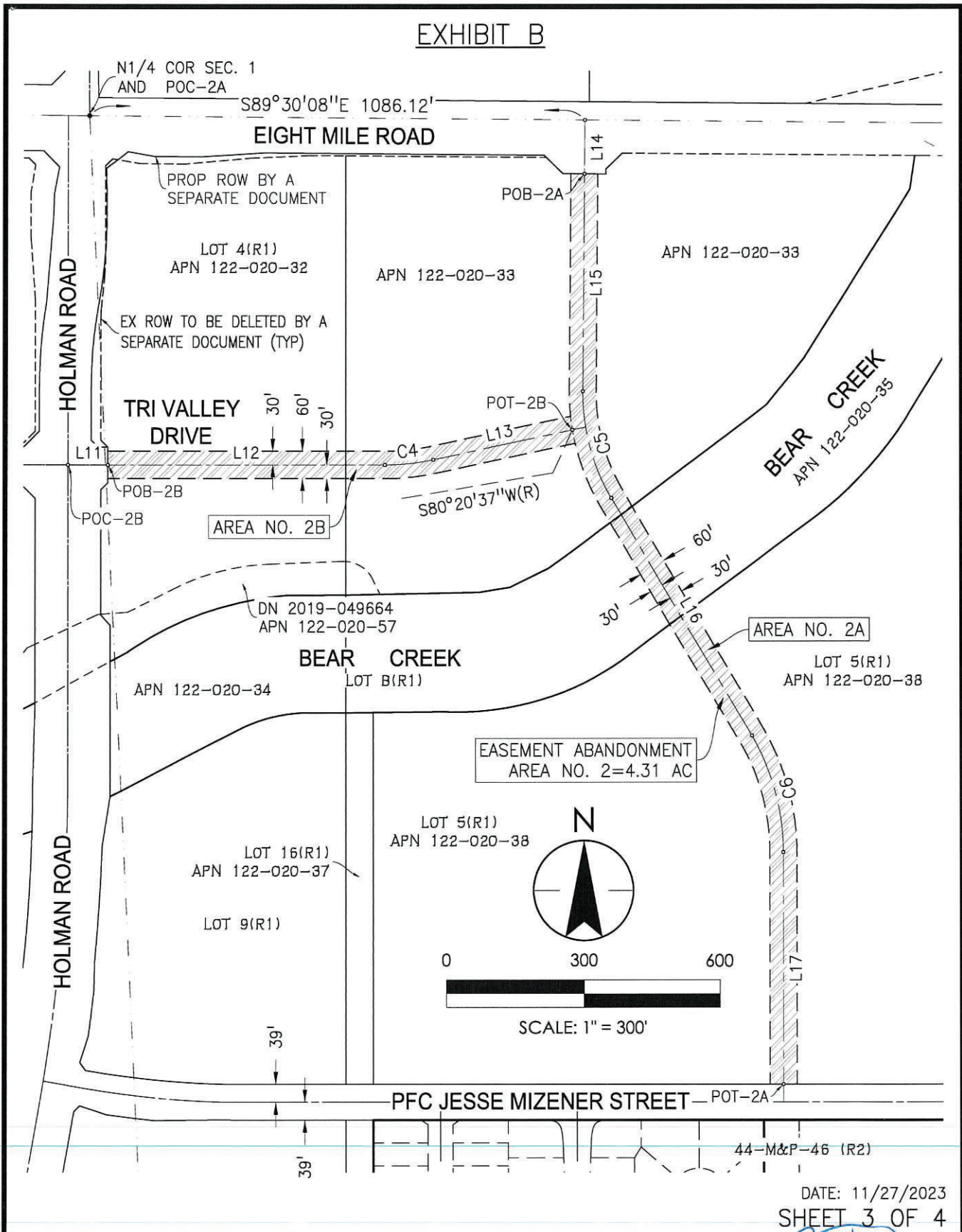
DATE: 11/27/2023
SHEET 2 OF 4

REV. NO.	REV. DATE	REV. BY	PUBLIC UTILITY EASEMENT ABANDONMENT CANNERY PARK UNIT NO. 1 & UNIT NO. 12 PORTION OF APN 122-020-17, 19, 20, 57, 32, 33, 35, 38 & 60	APPROVED BY	<i>[Signature]</i>
				CITY ENGINEER	
DIGITIZED				DATE	DRAWING NO.
DWG. BY		SCALE		1/22/24	
CK. BY					

CITY OF STOCKTON
DEPARTMENT OF PUBLIC WORKS

4769-1A

EXHIBIT B



DATE: 11/27/2023

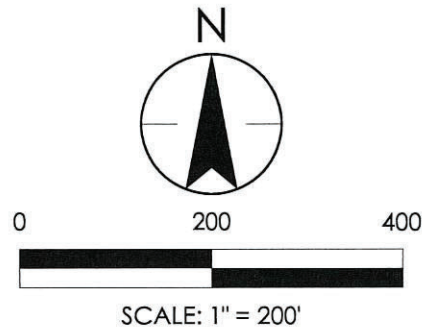
SHEET 3 OF 4

REV. NO.	REV. DATE	REV. BY	PUBLIC UTILITY EASEMENT ABANDONMENT CANNERY PARK UNIT NO. 1 & UNIT NO. 12 PORTION OF APN 122-020-17, 19, 20, 57, 32, 33, 35, 38 & 60	APPROVED BY	<i>[Signature]</i>
				CITY ENGINEER	
DIGITIZED			CITY OF STOCKTON DEPARTMENT OF PUBLIC WORKS	DATE	1/22/24
DWG. BY		SCALE		DRAWING NO.	
CK. BY					

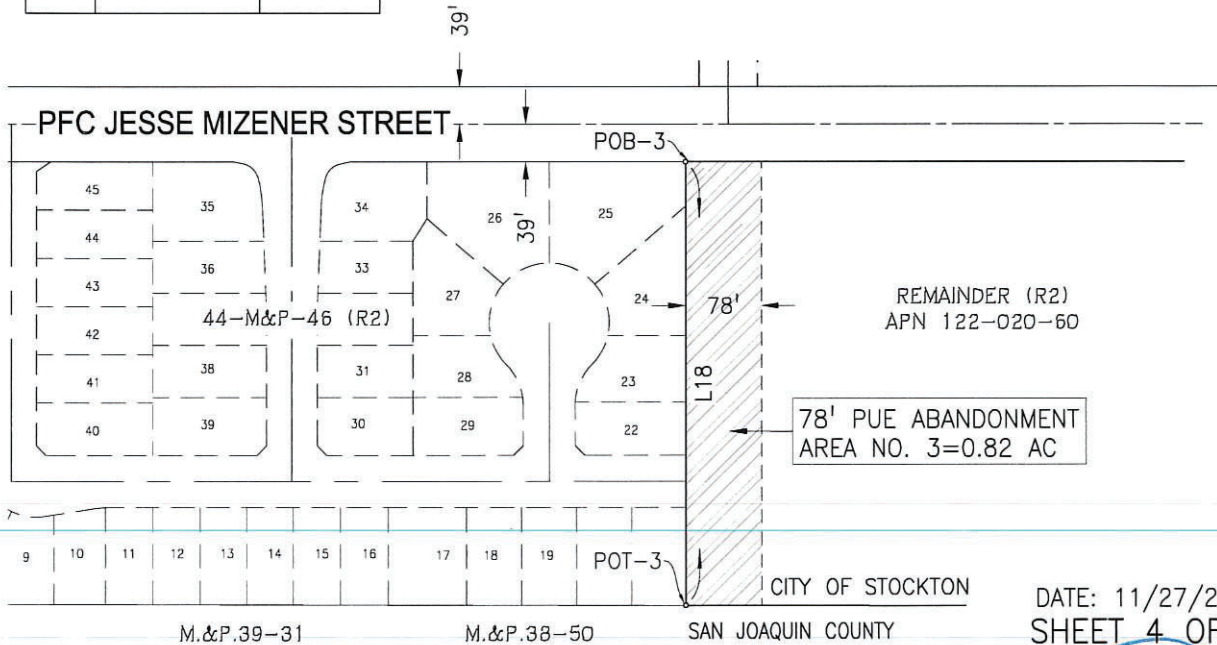
4769.1A

LINE DATA TABLE		
LINE	BEARING	DISTANCE
L1	N90°00'00"W	107.00'
L2	N90°00'00"W	353.05'
L3	S0°00'00"E	215.00'
L4	N90°00'00"W	181.41'
L5	S77°55'55"W	63.91'
L6	S77°55'55"W	468.77'
L7	N88°07'26"W	224.62'
L8	N3°11'58"E	615.44'
L9	N0°00'00"E	225.96'
L10	N0°00'00"E	112.50'
L11	N90°00'00"E	87.00'
L12	N90°00'00"E	609.49'
L13	N77°46'59"E	309.41'
L14	S0°29'52"W	118.00'
L15	S0°29'52"W	476.64'
L16	S30°41'47"E	605.29'
L17	S0°00'00"E	506.64'
L18	N0°00'00"E	459.99'

CURVE DATA TABLE					
CURVE	DELTA	RADIUS	LENGTH	CH.BEARING	CHORD
C1	12°04'05"	500.00'	105.31'	S83°57'57"W	105.12'
C2	13°56'39"	500.00'	121.69'	S84°54'15"W	121.39'
C3	3°11'58"	3000.00'	167.53'	N1°35'59"E	167.51'
C4	12°13'01"	500.00'	106.61'	N83°53'29"E	106.41'
C5	31°11'39"	450.00'	245.00'	S15°05'57"E	241.98'
C6	30°41'47"	500.00'	267.88'	S15°20'53"E	264.68'



LOT 5(R1)
APN 122-020-38



DATE: 11/27/2023
SHEET 4 OF 4

REV. NO.	REV. DATE	REV. BY	PUBLIC UTILITY EASEMENT ABANDONMENT CANNERY PARK UNIT NO. 1 & UNIT NO. 12 PORTION OF APN 122-020-17, 19, 20, 57, 32, 33, 35, 38 & 60	APPROVED BY	DRAWING NO.
				CITY ENGINEER	
DIGITIZED			CITY OF STOCKTON DEPARTMENT OF PUBLIC WORKS	DATE	
DWG. BY	SCALE			1/22/24	
CK. BY					

4769.1A