

California Historical
Landmark 178 - Lindsay
Point Plaque

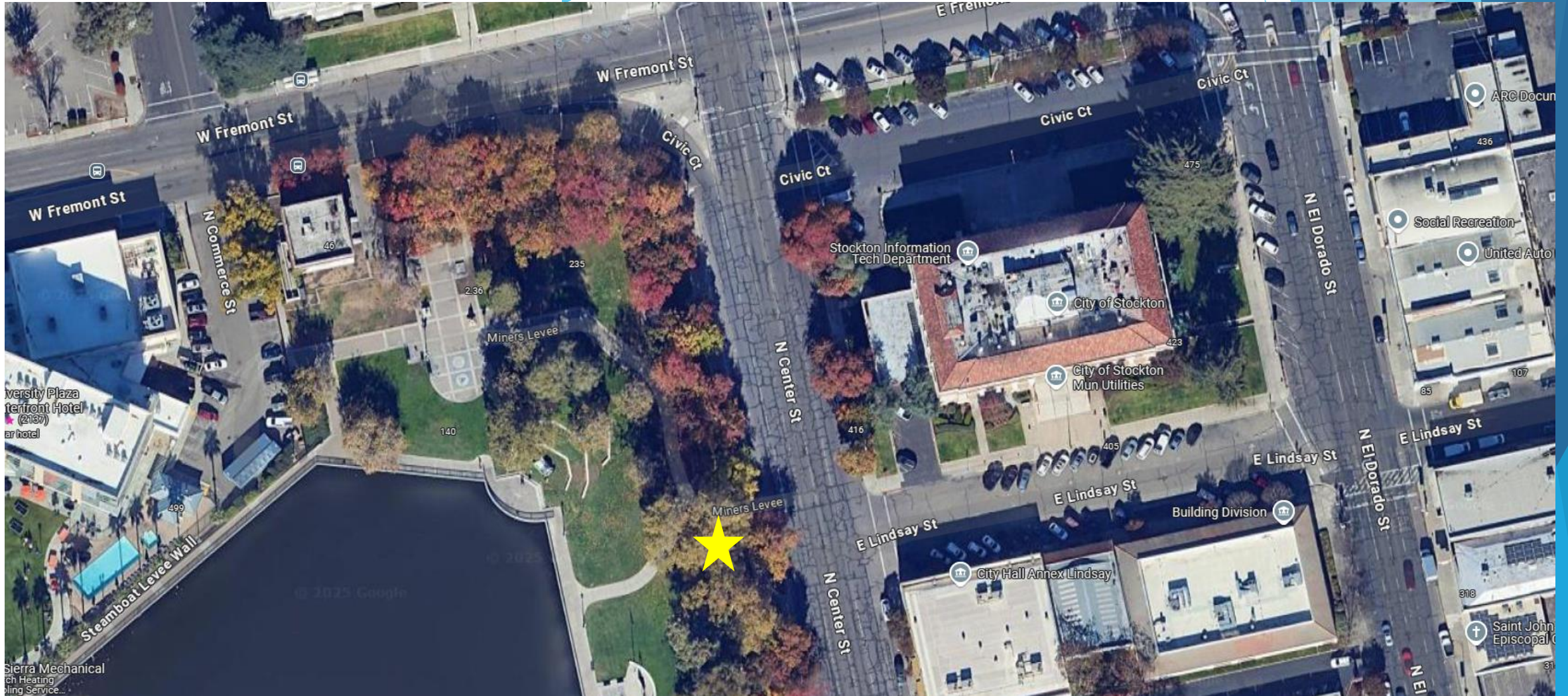
April 29, 2025



- ▶ Location
- ▶ Current Condition of the Plaque
- ▶ Historical inaccuracies
- ▶ Offensive Language



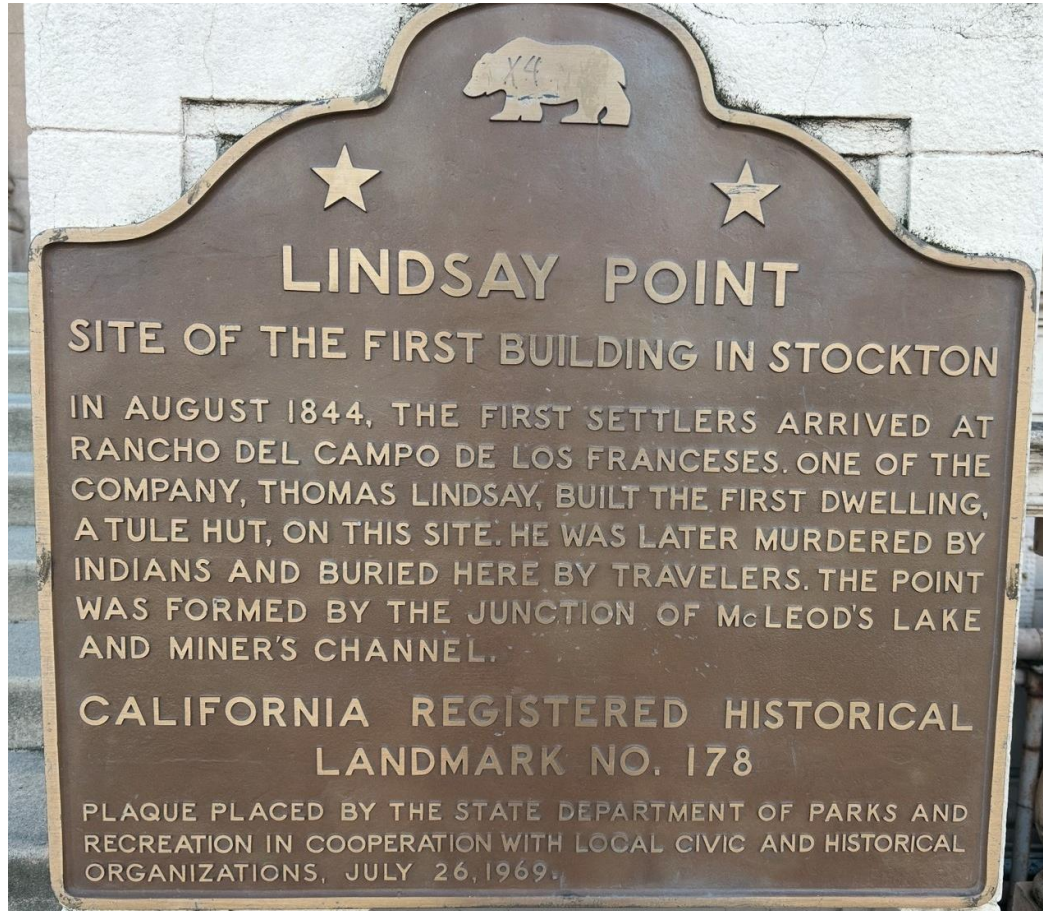
Location of Lindsay Point



Referenced location in the original application:

“At the extreme western end of the point is a small enclosed plot of lawn, with a flagstaff, and a sign which says: "U. S. Engineers." This would provide a suitable place for the marker.”





Current Condition

General condition

Graffiti - vandalism

Mortar - growth of moss



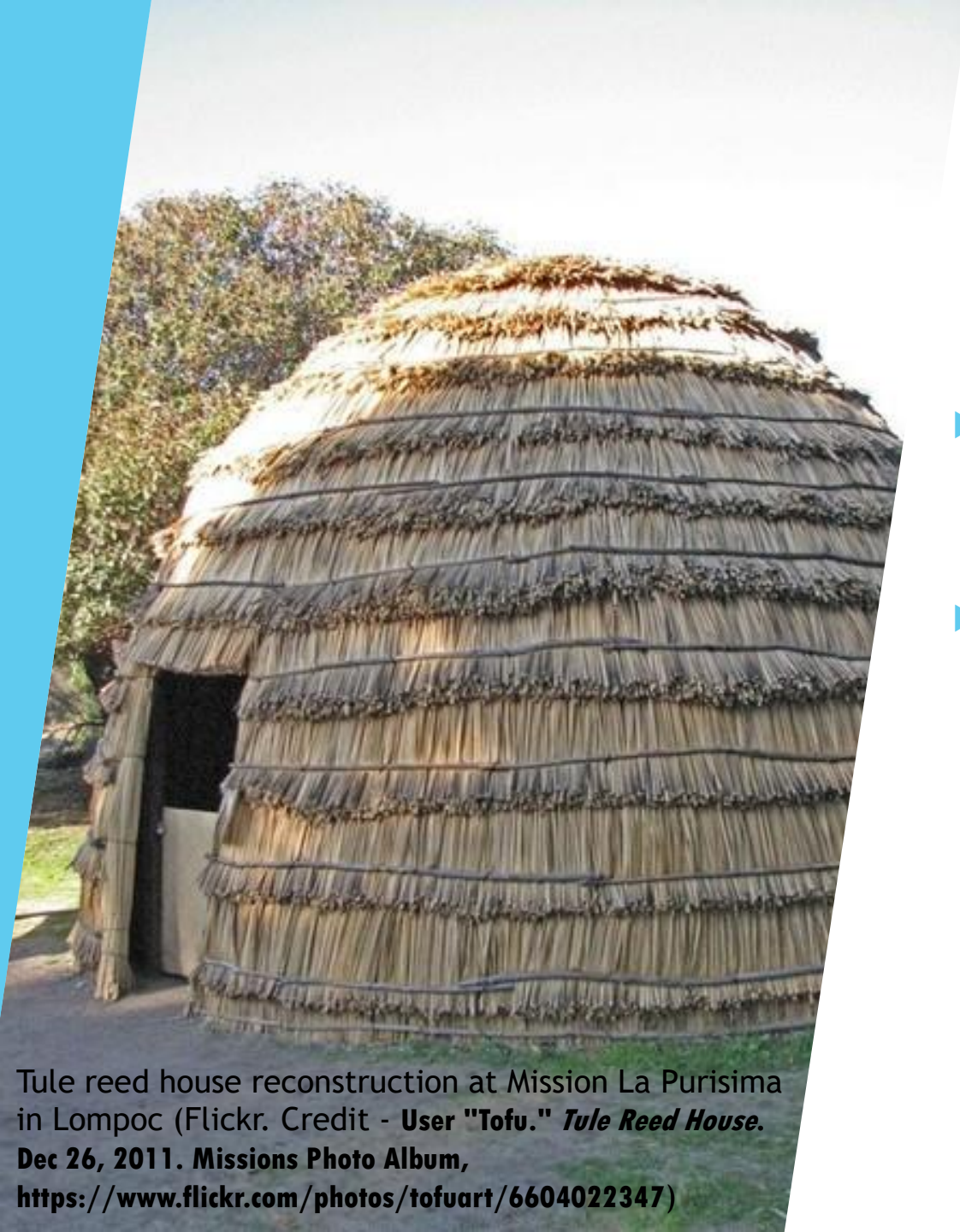
Historical Inaccuracies

- ▶ Smallpox outbreak
- ▶ Witness testimony - America *Kelsey* Wyman
- ▶ Change to historical narrative

America *Kelsey* Wyman

Offensive Language

- ▶ Use of tule reeds to construct “dwellings”
- ▶ Misrepresentation of indigenous peoples



Tule reed house reconstruction at Mission La Purisima in Lompoc (Flickr. Credit - User "Tofu." *Tule Reed House*. Dec 26, 2011. Missions Photo Album, <https://www.flickr.com/photos/tofuart/6604022347>)



Questions?