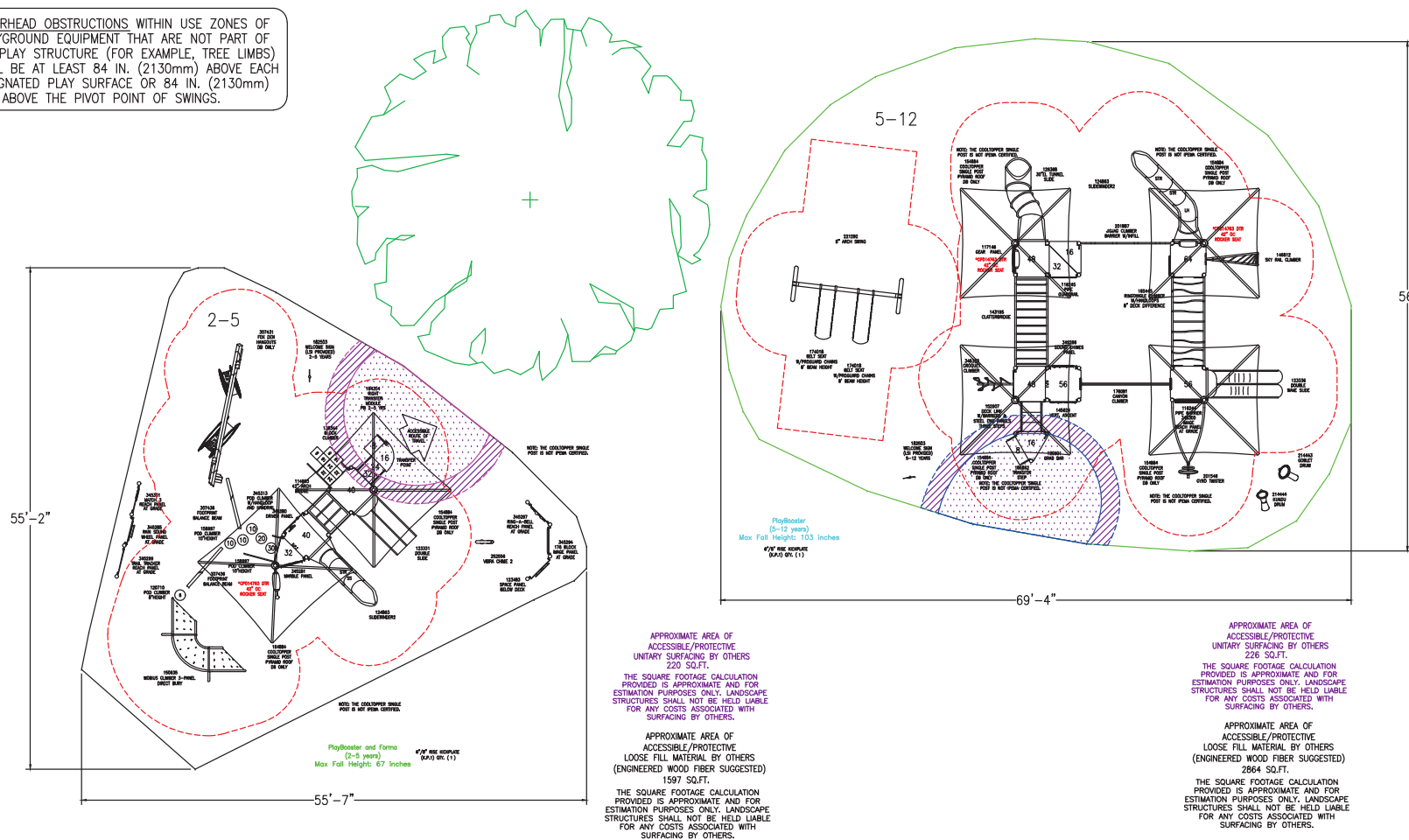


\*OVERHEAD OBSTRUCTIONS WITHIN USE ZONES OF PLAYGROUND EQUIPMENT THAT ARE NOT PART OF THE PLAY STRUCTURE (FOR EXAMPLE, TREE LIMBS) SHALL BE AT LEAST 84 IN. (2130mm) ABOVE EACH DESIGNATED PLAY SURFACE OR 84 IN. (2130mm) ABOVE THE PIVOT POINT OF SWINGS.



2-5

TOTAL ELEVATED PLAY COMPONENTS	6		
TOTAL ELEVATED COMPONENTS ACCESSIBLE BY RAMP	0	REQUIRED	0
TOTAL ELEVATED COMPONENTS ACCESSIBLE BY TRANSFER	6	REQUIRED	3
TOTAL ACCESSIBLE GROUND LEVEL COMPONENTS SHOWN	8	REQUIRED	2
TOTAL DIFFERENT TYPES OF GROUND LEVEL COMPONENTS	7	REQUIRED	7

5-12

TOTAL ELEVATED PLAY COMPONENTS	12		
TOTAL ELEVATED COMPONENTS ACCESSIBLE BY RAMP	0	REQUIRED	0
TOTAL ELEVATED COMPONENTS ACCESSIBLE BY TRANSFER	6	REQUIRED	6
TOTAL ACCESSIBLE GROUND LEVEL COMPONENTS SHOWN	4	REQUIRED	4
TOTAL DIFFERENT TYPES OF GROUND LEVEL COMPONENTS	3	REQUIRED	3

landscape structures



The play components identified on this plan are IPMA certified. (Unless model number is preceded with \*) The use and layout of these components conform to the requirements of ASTM F1487. To verify product certification, visit [www.ipma.org](http://www.ipma.org)

THIS PLAY AREA & PLAY EQUIPMENT IS DESIGNED FOR AGES 2-12 YEARS UNLESS OTHERWISE NOTED ON PLAN.

IT IS THE MANUFACTURER'S OPINION THAT THIS PLAY AREA DOES CONFORM TO THE ADA ACCESSIBILITY STANDARDS, ASSUMING AN ACCESSIBLE PROTECTIVE SURFACING IS PROVIDED, AS INDICATED, OR WITHIN THE ENTIRE USE ZONE.

THIS CONCEPTUAL PLAN WAS BASED ON INFORMATION AVAILABLE TO US. PRIOR TO CONSTRUCTION, DETAILED SITE INFORMATION INCLUDING SITE DIMENSIONS, TOPOGRAPHY, EXISTING UTILITIES, SOIL CONDITIONS, AND DRAINAGE SOLUTIONS SHOULD BE OBTAINED, EVALUATED, & UTILIZED IN THE FINAL DESIGN. PLEASE VERIFY ALL DIMENSIONS OF PLAY AREA, SIZE, ORIENTATION, AND LOCATION OF ALL EXISTING UTILITIES, EQUIPMENT, AND SITE FURNISHINGS PRIOR TO ORDERING. SLIDES SHOULD NOT FACE THE HOT AFTERNOON SUN.

CHOOSE A PROTECTIVE SURFACING MATERIAL THAT HAS A CRITICAL HEIGHT VALUE TO MEET THE MAXIMUM FALL HEIGHT FOR THE EQUIPMENT (REF. ASTM F1487 STANDARD CONSUMER SAFETY PERFORMANCE SPECIFICATION FOR PLAYGROUND EQUIPMENT FOR PUBLIC USE, SECTION 4 CURRENT REVISIONS). THE SUBSURFACE MUST BE WELL DRAINED. IF THE SOIL DOES NOT DRAIN NATURALLY IT MUST BE TILED OR SLOPED 1/8" TO 1/4" PER FOOT TO A STORM SEWER OR A "FRENCH DRAIN".

ACCESSIBLE/PROTECTIVE SURFACING TO BE A COMBINATION OF UNITARY AND LOOSE FILL MATERIALS.

DESIGNED BY:

NAK

COPYRIGHT: 3/14/25  
LANDSCAPE STRUCTURES INC.  
801 7th STREET SOUTH  
DELAHO, MINNESOTA 55328  
PH: 612-436-6574  
[playhl.com](http://playhl.com)

1/23/25	1193000-03-02	NAK
Date	Previous Drawing #	Initials



Mattie Harrel Play  
Stockton, CA

Ross Recreation  
Equipment Co  
Nicole Nowak

SYSTEM TYPE:  
PlayBooster

DRAWING #:  
1193000-03-03









Mattie Harrel Play



1193000-03-03 • 3.14.2025 Recreation Equipment

© 2025 Landscape Structures. All Rights Reserved





Mattie Harrel Play



1193000-03-03 • 3.14.2025 Recreation Equipment

© 2025 Landscape Structures. All Rights Reserved





Mattie Harrel Play



1193000-03-03 • 3.14.2025 Recreation Equipment

© 2025 Landscape Structures. All Rights Reserved





Mattie Harrel Play



1193000-03-03 • 3.14.2025 Recreation Equipment

© 2025 Landscape Structures. All Rights Reserved





Mattie Harrel Play

**ROSS**

1193000-03-03 • 3.14.2025 Recreation Equipment

© 2025 Landscape Structures. All Rights Reserved



Mattie Harrel Play



1193000-03-03 • 3.14.2025 Recreation Equipment

© 2025 Landscape Structures. All Rights Reserved





Mattie Harrel Play



1193000-03-03 • 3.14.2025 Recreation Equipment

© 2025 Landscape Structures. All Rights Reserved





Mattie Harrel Play



1193000-03-03 • 3.14.2025 Recreation Equipment

© 2025 Landscape Structures. All Rights Reserved





Mattie Harrel Play



1193000-03-03 • 3.14.2025 Recreation Equipment

© 2025 Landscape Structures. All Rights Reserved





*landscape*  
structures

Mattie Harrel Play

**ROSS**

1193000-03-03 • 3.14.2025 Recreation Equipment

© 2025 Landscape Structures. All Rights Reserved





Mattie Harrel Play



1193000-03-03 • 3.14.2025 Recreation Equipment

© 2025 Landscape Structures. All Rights Reserved





Mattie Harrel Play



1193000-03-03 • 3.14.2025 Recreation Equipment

© 2025 Landscape Structures. All Rights Reserved





Mattie Harrel Play



1193000-03-03 • 3.14.2025

© 2025 Landscape Structures. All Rights Reserved









Mattie Harrel Play



1193000-03-03 • 3.14.2025 Recreation Equipment

© 2025 Landscape Structures. All Rights Reserved





Mattie Harrel Play



1193000-03-03 • 3.14.2025 Recreation Equipment

© 2025 Landscape Structures. All Rights Reserved