

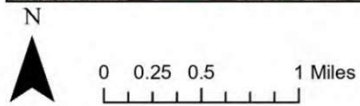
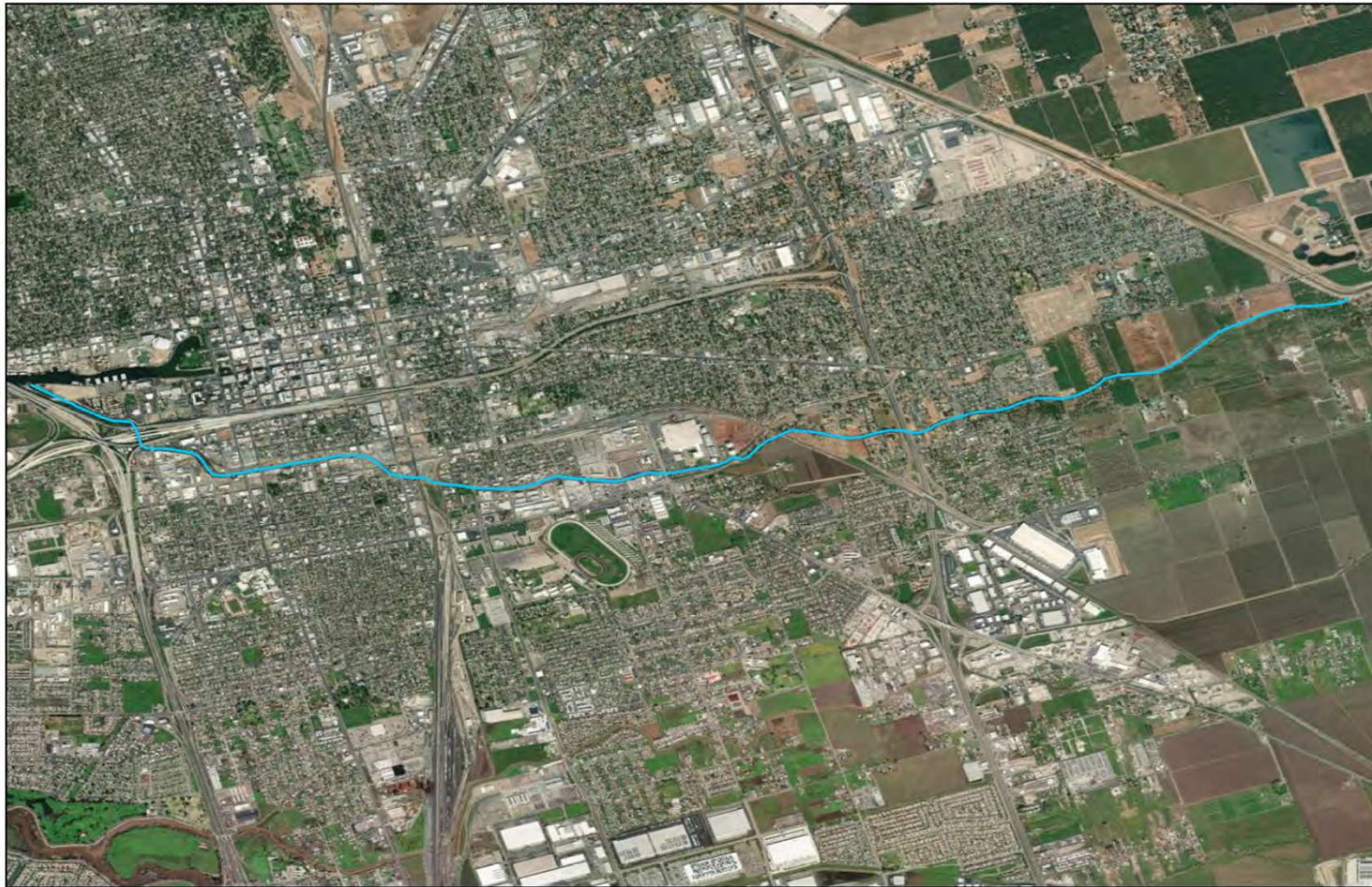


# The Mormon Slough Restoration Project



**Mormon Slough**  
Restoration Association

Copyright © 2026, Restore the Delta. All rights reserved. Printed in the United States of America. No part of this report may be used or reproduced in any manner whatsoever without written permissions except in the case of quotations embodied in academic and legal works, and in articles and reviews. For information, contact Restore the Delta.



Date: 7/23/25  
Data: Esri, River Partners  
Created by: Alexander Findeis

Copyright © 2026, Restore the Delta. All rights reserved. Printed in the United States of America. No part of this report may be used or reproduced in any manner whatsoever without written permissions except in the case of quotations embodied in academic and legal works, and in articles and reviews. For information, contact Restore the Delta.

Figure 1  
**Mormon Slough Study Area**

— Mormon Slough



# Mormon Slough History

## Mormon Slough used to be watered until...

- The diverting canal project was completed in 1910.
- The City had for years pumped excess sewer water (2,750,000 gallons/day) into the Mormon Channel and relied on the remaining river flow to wash the sewage out to the Delta.
- By 1911, the channel was almost entirely dry due to the upstream diversion. The result was that Stockton's sewage was being pumped into the channel, without any sanitation or water to flush the sewage away...affecting immigrant Bi-POC communities that lived near Mormon Channel south of downtown.
- By 1915 working class leaders came together to successfully stop illegal dumping.

## Continued Disinvestment

- Army Corps rejected upgrades due to a low benefit-cost ratio. A traditional analysis that deemed the area unworthy of upgrades due to low economic development promise.
- Inequitable way to measure flood protection investments in historically disinvested communities.

Copyright © 2026, Restore the Delta. All rights reserved. Printed in the United States of America. No part of this report may be used or reproduced in any manner whatsoever without written permissions except in the case of quotations embodied in academic and legal works, and in articles and reviews. For information, contact Restore the Delta.

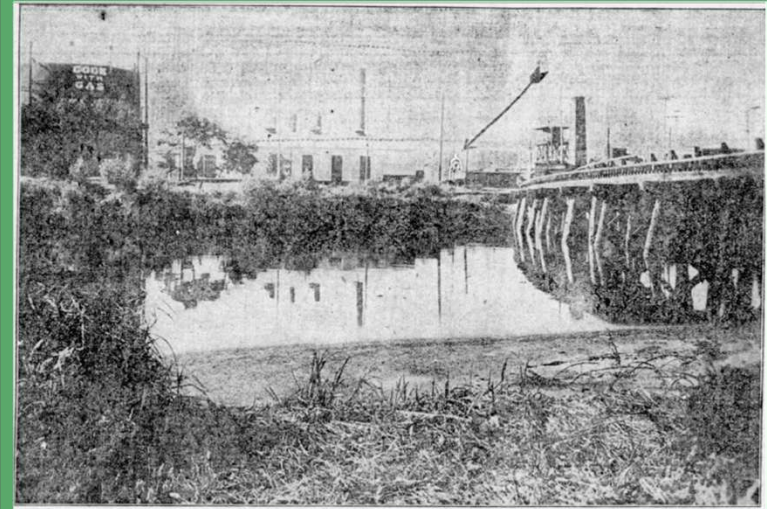
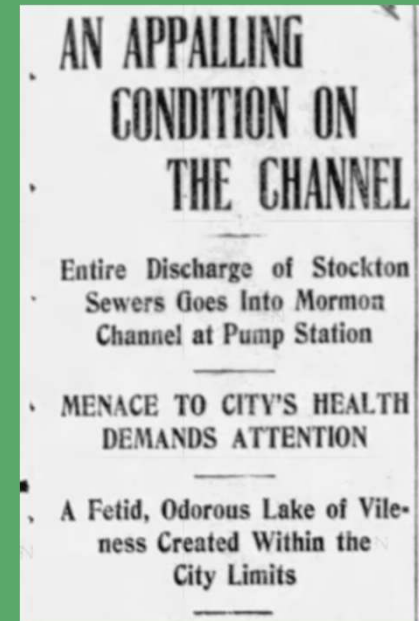


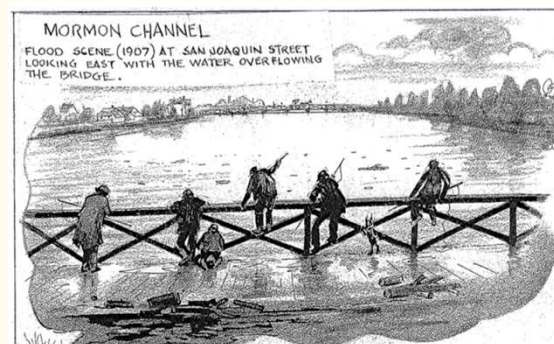
Image | Stocktonia,  
Mormon Slough  
Archives



# Flood Risks Along the Mormon Slough

## Why are we susceptible to flooding?

- In the 2017 Central Valley Flood Protection Plan, **increased river flow from Calaveras during extreme periods of rain and high volumes of rapid snowmelt** are reported to be the main causes of flooding.
- If there is excessive water beyond our levee design that flows through, it can overtop and flood communities.
- The Calaveras River system has upstream and downstream erosion issues, which may increase flood risk.
- **Sea-level rise** in the San Joaquin River near the watered part of the slough can cause flooding due to increasing king tides in the Delta.
- If **a connection** between Mormon Slough and the Calaveras were built, flood flows would be able to go through the slough, reduce flood risk, and take pressure off the Calaveras .



Flooded Mormon Channel, Stockton, 1907. Haggin Museum Library Archive, Stockton, California.

Copyright © 2026, Restore the Delta. All rights reserved.  
Printed in the United States of America. No part of this report may be used or reproduced in any manner whatsoever without written permissions except in the case of quotations embodied in academic and legal works, and in articles and reviews. For information, contact Restore the Delta.

# Mormon Slough Restoration Association

- **Origin:** The 2023 Atmospheric River Storms raised community concerns for flood risks.
- **Goal:** Community-based organizations, NGOs, tribal government, and our local flood agency work closely together to shape the Mormon Slough Restoration project through the lens of environmental justice communities and tribal groups.
- **Mormon Slough Restoration Association:** A broad coalition of stakeholders that includes: BVR, SJAFCA, Building and Trades Council, technical experts like River Partners, SFEI, American Rivers and various CBOs and NGOs like LMR, NAACP, and Catholic Charities.
  - To date, convened this broad coalition of unique voices first over a 2-day visioning session, and now over 70 meetings to reimagine the Slough as a greenway with various pocket parks — one that honors the land, its ancestors, and the people that live there.



Copyright © 2026, Restore the Delta. All rights reserved. Printed in the United States of America. No part of this report may be used or reproduced in any manner whatsoever without written permissions except in the case of quotations embodied in academic and legal works, and in articles and reviews. For information, contact Restore the Delta.

# Mormon Slough Restoration

## Project Vision

- **Clean-up initiatives to restore the slough's natural beauty**
- **Upgrade levees and create urban nature-based flood mitigation**
- **Building a community-driven economic development plan to support workforce development**
- **Working with SJ Housing Authority and Continuous Care to support the development of a plan to safely relocate unhoused folks along the slough**
- **Reduce Urban Heat Impacts**
- **Cultivate art and history**
- **Expand recreation space:** green park in the city with walking trails, relaxation spots, and fun nature activities
- **Tackle health hazards:** fighting harmful algae to keep our waterways healthy
- **Restore fish and bird habitat**

Copyright © 2026, Restore the Delta. All rights reserved. Printed in the United States of America. No part of this report may be used or reproduced in any manner whatsoever without written permissions except in the case of quotations embodied in academic and legal works, and in articles and reviews. For information, contact Restore the Delta.

## Current



Mormon Slough during JAN 2023 Atmospheric River Storms | Image: Restore the Delta

## Future



UC Davis Arboretum | Image: The Davis Enterprise

An aerial photograph of an industrial area with a slough in the center. The slough is a narrow waterway that has been partially filled with debris and trash, including tires and a blue tarp. A concrete bridge spans across the slough. In the background, there are several large industrial buildings, parking lots with cars, and a city skyline under a clear sky. The overall scene suggests a site undergoing restoration or cleanup.

# Mormon Slough Restoration: Pre-Design and Visioning

# North Valley Thrive Catalyst Grant

- **Timeline:** Sept. 2025 - Sept. 2026
- **Phase:** Pre-Development Visioning + Design
- **Product Outcomes**
  - Site Inventory (*Complete*)
  - Conceptual Designs for 2 Pilot Restoration Sites (*In Progress*)
    - Solari Ranch
    - Emergency Food Bank
  - Art Installation Guide (*In Progress*)
  - Economic Cost/Benefits Analysis (*In Progress*)



**Mormon Slough**  
Restoration Association

# We Invite You to Attend the Upcoming Events...

## Mormon Slough Design Visioning Session #2:

**Where & When:** July 25 at the Sycamore,  
630 E Weber Ave, Stockton, CA 95202

Presentation for Government  
Officials and Agencies

October 2026, Date and Time TBD

