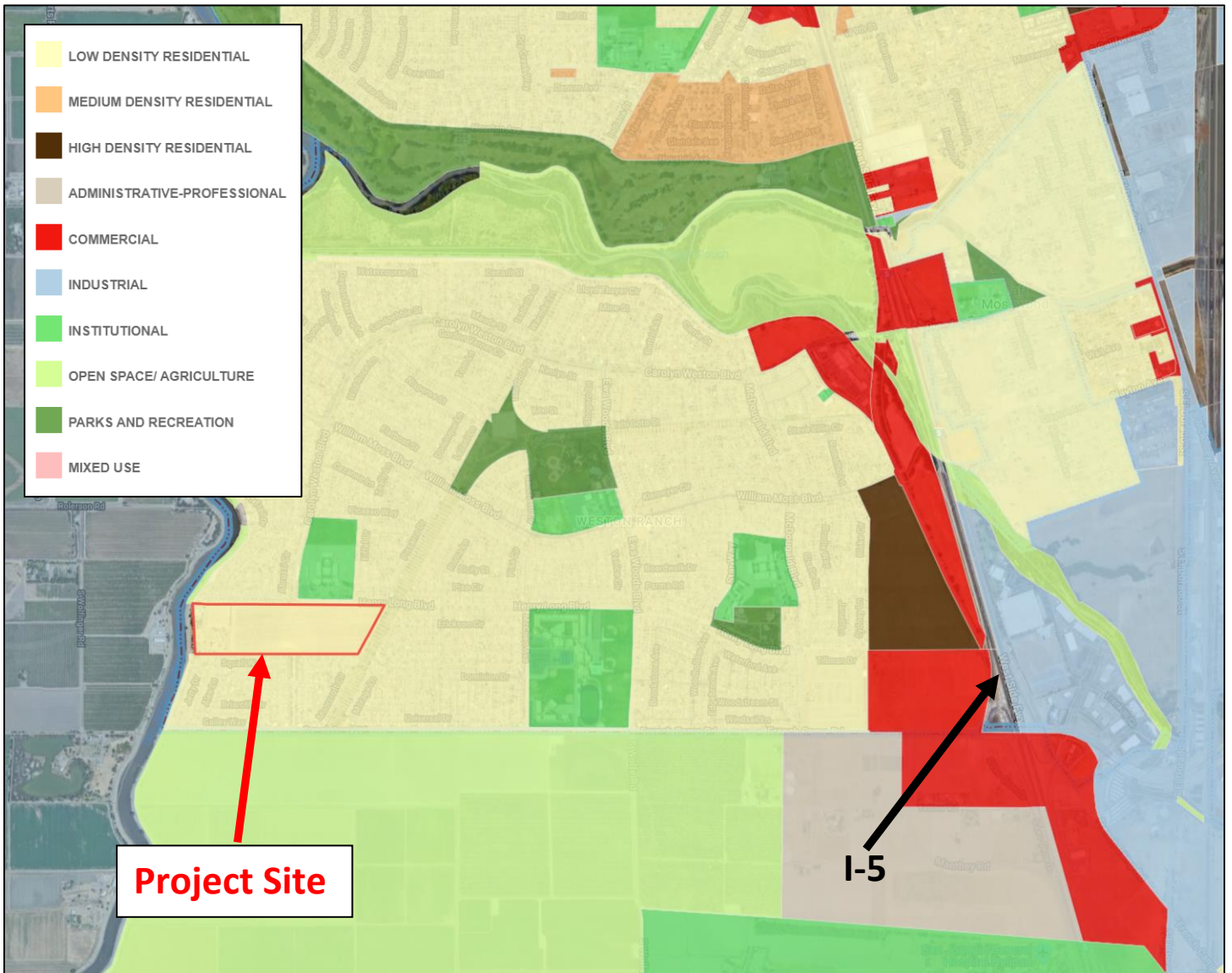
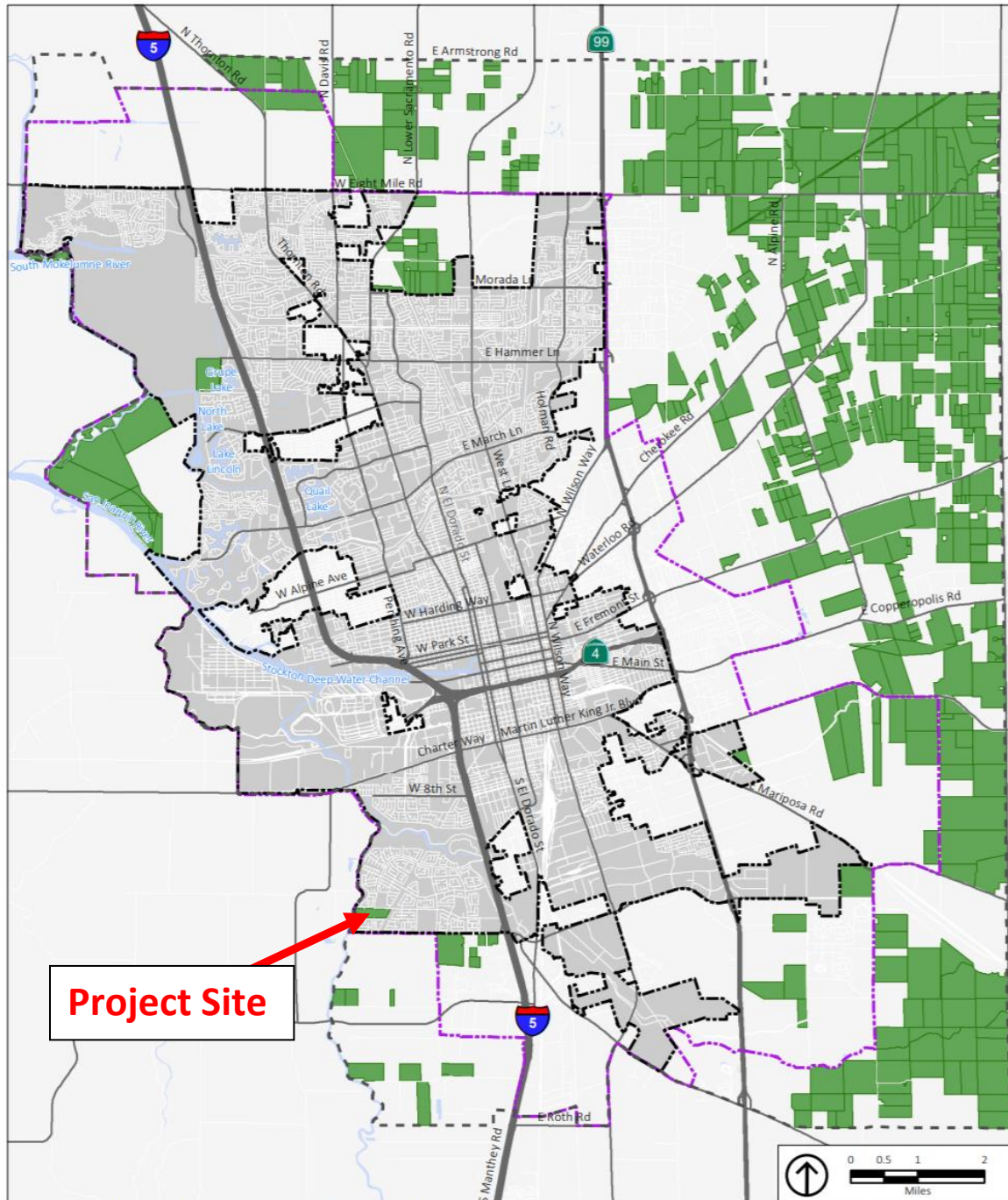


**Project Site Land Use** (Yellow=Low Density Residential)



**Project Site Agricultural Resources (Williamson Act and Farmland)**

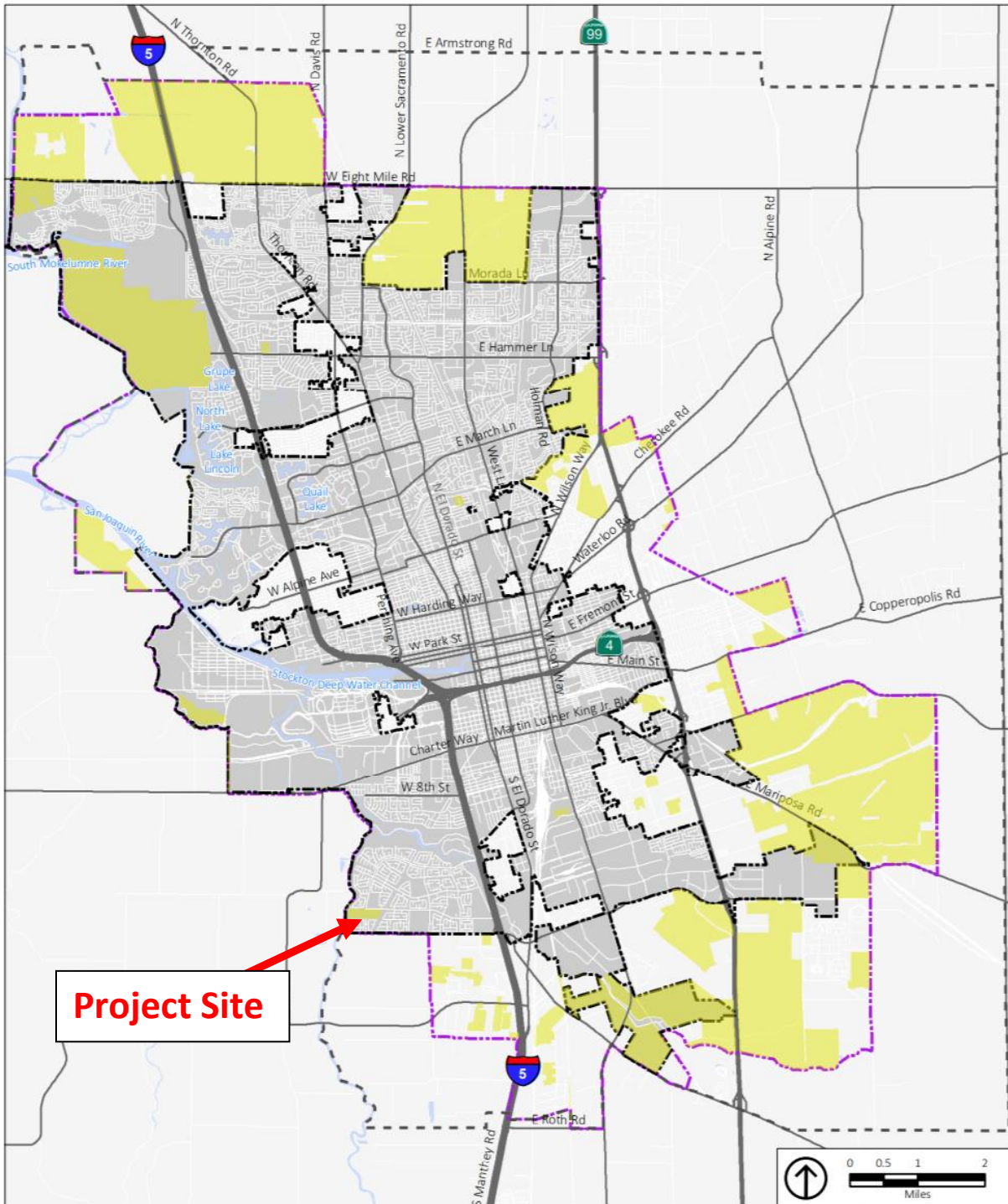


Source: San Joaquin County Assessor's Office, 2017; City of Stockton; PlaceWorks, 2017.

- Williamson Act Parcels
- City Limit
- Sphere of Influence/ EIR Study Area
- General Plan Planning Area

PLACEWORKS

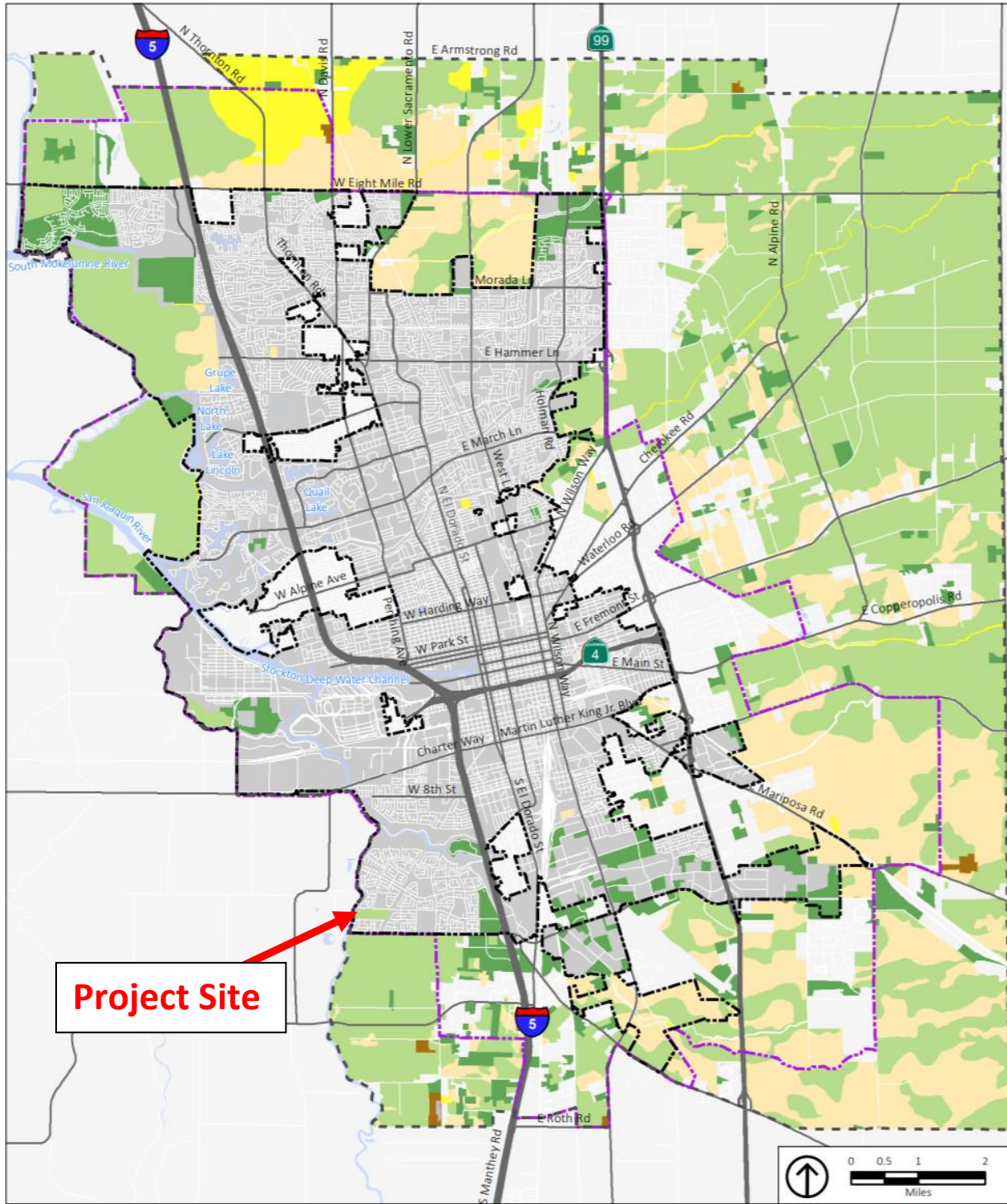
Figure 4.2-2  
Williamson Act Parcels



Source: City of Stockton; PlaceWorks, 2016.

- Potential Farmland Conversion
- City Limit
- General Plan Planning Area
- Sphere of Influence/ EIR Study Area

Figure 4.2-4  
Potential Farmland Conversion



Source: Department of Conservation, 2015; City of Stockton; PlaceWorks, 2017.

- Prime Farmland
- Farmland of Statewide Importance
- Unique Farmland
- Farmland of Local Importance
- Confined Animal Agriculture
- City Limit
- Sphere of Influence/ EIR Study Area
- General Plan Planning Area

Figure 4.2-1  
Important Farmlands