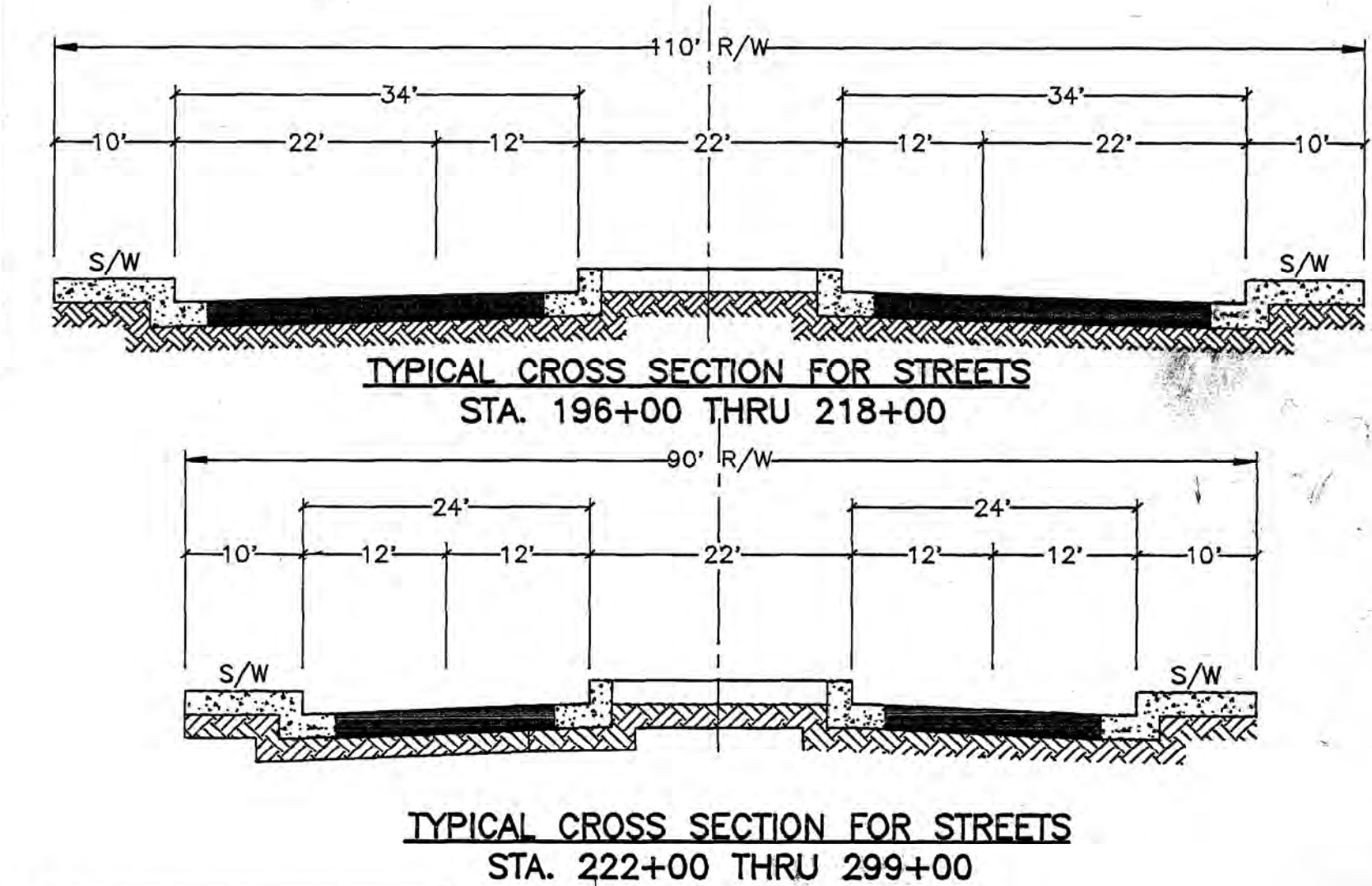
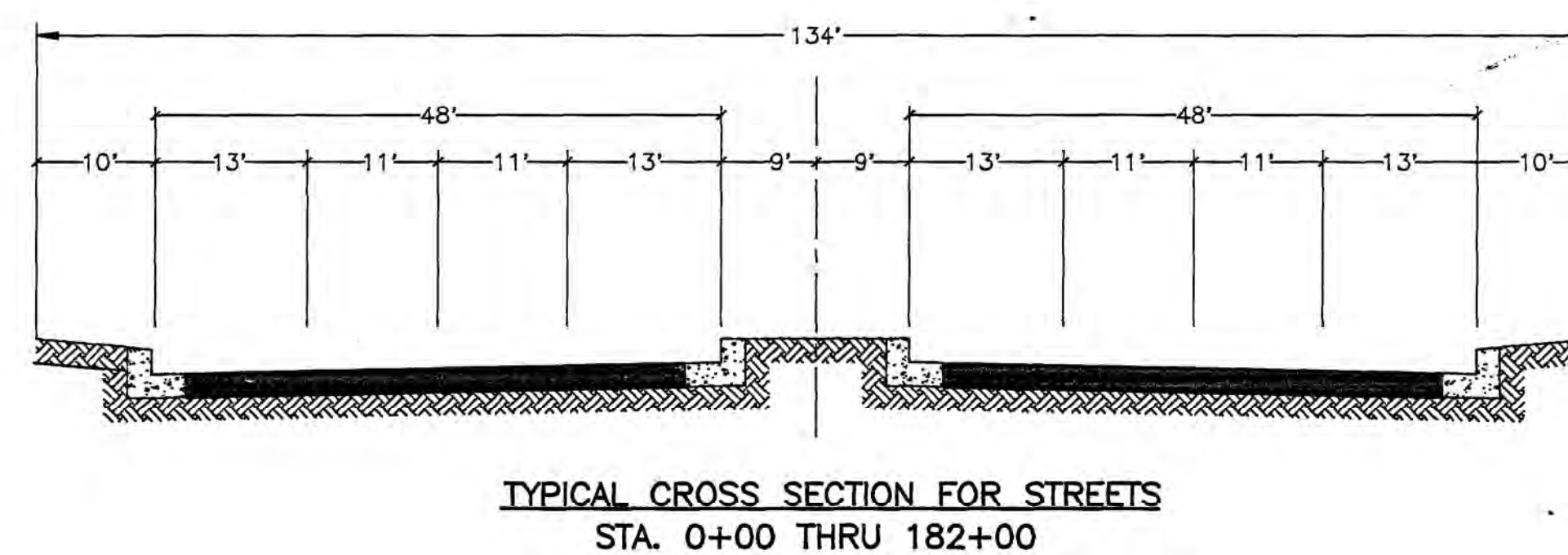
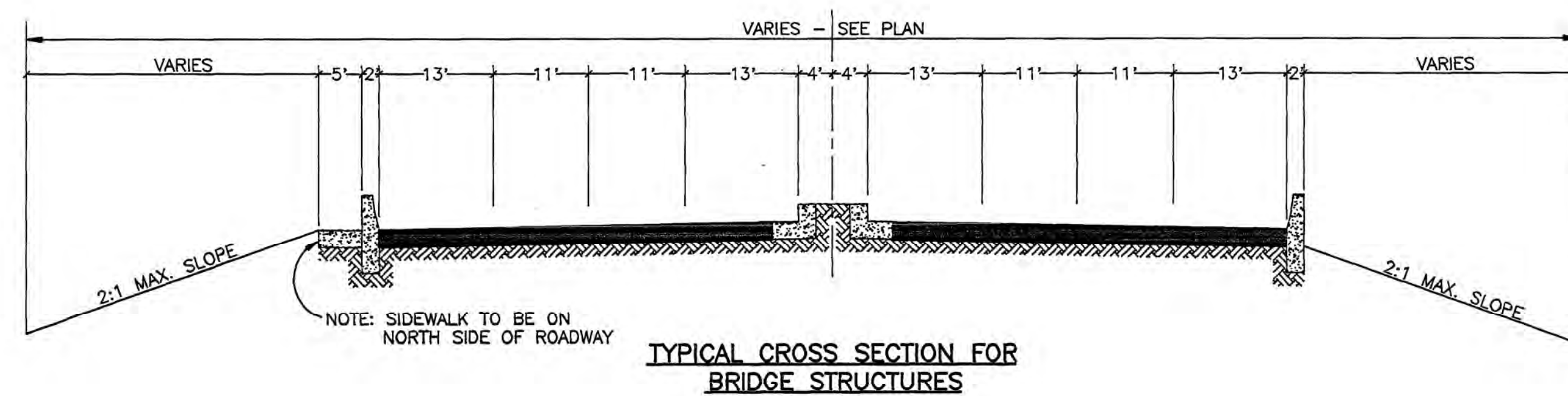


ARCH-AIRPORT/SPERRY ROAD SPECIFIC ROAD PLAN

FROM

INTERSTATE RTE. 5 TO AUSTIN ROAD

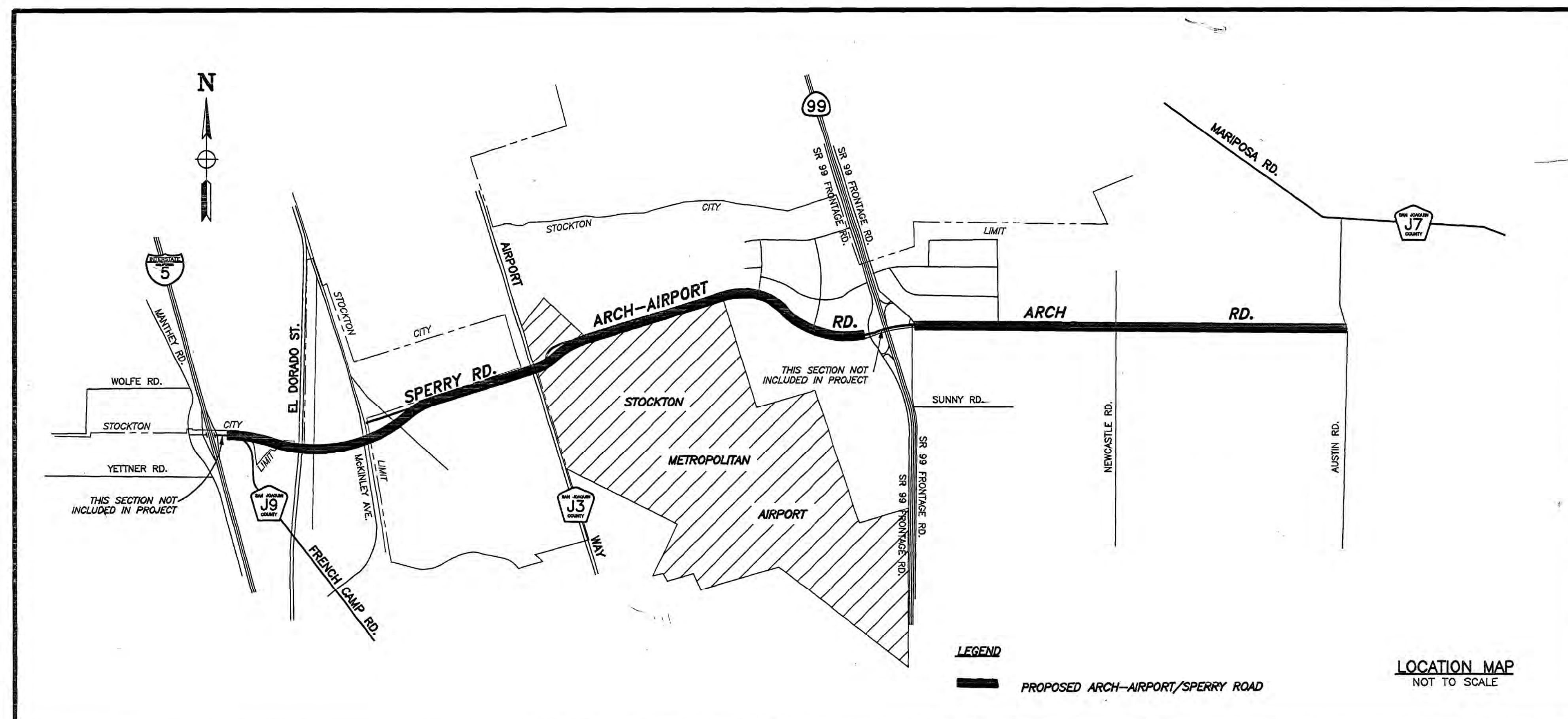
CITY OF STOCKTON / SAN JOAQUIN COUNTY, CALIFORNIA



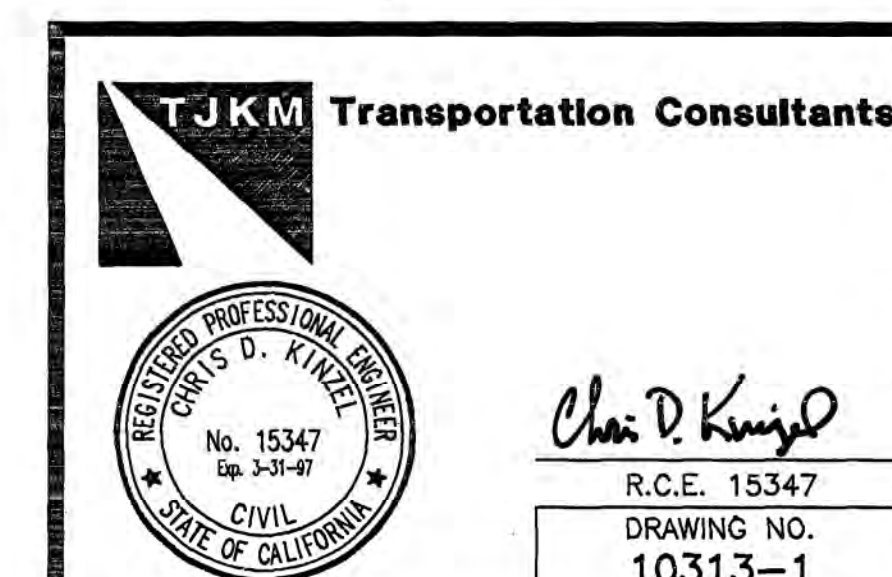
LEGEND	
EXISTING RIGHT-OF-WAY	---
CENTERLINE	---
FUTURE RIGHT-OF-WAY	---
SIGNALIZED INTERSECTION	(B)
RIGHT-IN-RIGHT-OUT ONLY	(T)
ANGLE POINTS	●

NOTE:

FUTURE ROAD OR ACCESS POINTS ARE APPROXIMATE LOCATION.



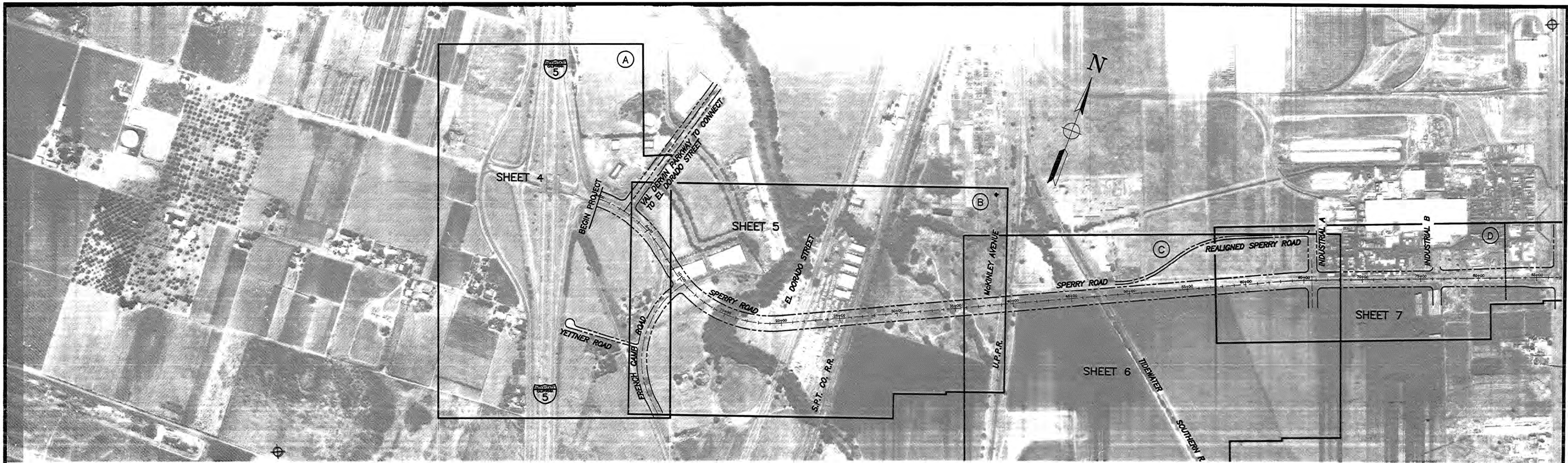
RECOMMENDED FOR APPROVAL THOMAS R. ELLIN DIRECTOR OF PUBLIC WORKS SAN JOAQUIN COUNTY	RECOMMENDED FOR APPROVAL CHRISTOPHER ELEY, CHAIR SAN JOAQUIN COUNTY PLANNING COMMISSION	APPROVED VICTOR MOW, CHAIR SAN JOAQUIN COUNTY BOARD OF SUPERVISORS DATE: 8/23/02
	RECOMMENDED FOR APPROVAL GEORGE LUCAS CHAIRMAN, CITY OF STOCKTON PLANNING COMMISSION	APPROVED GARY PODESTO MAYOR CITY OF STOCKTON DATE: 8-23-02



ARCH-AIRPORT/SPERRY ROAD			
GEOMETRIC PLAN LINE			
DEPARTMENT OF PUBLIC WORKS CITY OF STOCKTON, CALIFORNIA			
SCALE: NONE	DESIGNED BY: PM	APPROVED BY: [Signature]	SHEET NO. 1
DRAWN BY: ESB	CHECKED BY: JAG	CITY ENGINEER	OF 13 SHEETS
ASBUILT BY:		STOCKTON, CALIFORNIA	PROJECT NO. 11-037
			DATE: 3/95

4604C TO 4604.12C
ARCH-AIRPORT / SPERRY ROAD
SPECIFIC ROAD PLAN
FROM INTERSTATE 5 TO AUSTIN ROAD
GEOMETRIC PLAN LINE
TJKM TRANSPORTATION CONSULTANTS
AUGUST 23, 2002

4604C



PREPARED BY
JKM TRANSPORTATION CONSULTANTS
SACRAMENTO

REGISTERED PROFESSIONAL ENGINEER
CIVIL
No. 15347
Exp. 9-31-97
STATE OF CALIFORNIA

Chris D. Kuegel
DRAWING NO.
10313-2

ARCH-AIRPORT/SPERRY ROAD
GEOMETRIC PLAN LINE
DEPARTMENT OF PUBLIC WORKS
CITY OF STOCKTON, CALIFORNIA

SCALE: AS NOTED	APPROVED BY: DATE: 8/2/02	SHEET NO. 2
DESIGNED BY: PM	CITY ENGINEER STOCKTON, CALIFORNIA	OF 13 SHEETS
DRAWN BY: ESB		PROJECT NO. 11-037
CHECKED BY: JAG		DATE: 3/95
AS BUILT BY:		

4604.1C

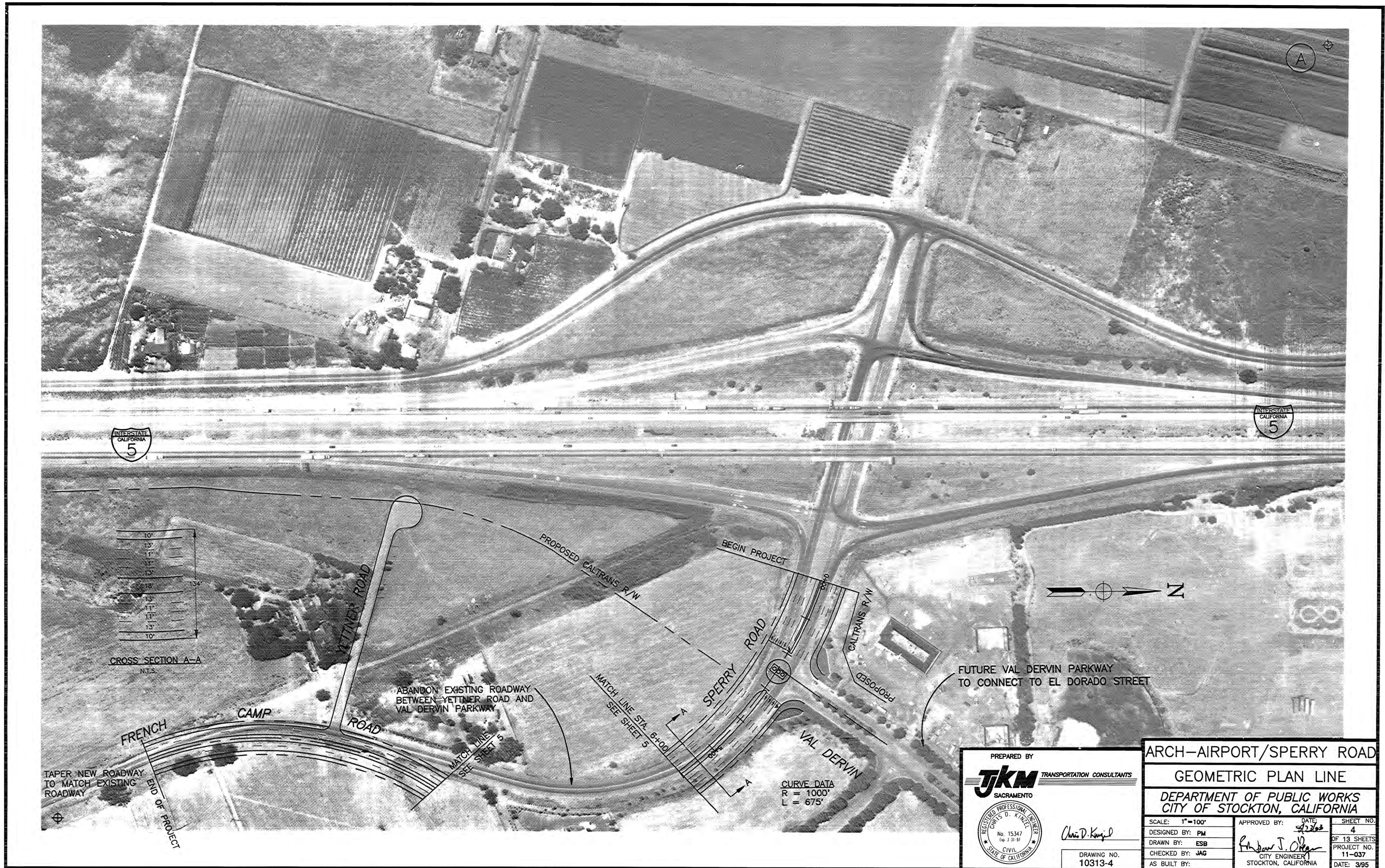
4604.1C
ARCH-AIRPORT / SPERRY ROAD
SPECIFIC ROAD PLAN
FROM INTERSTATE FIVE TO AUSTIN ROAD
STOCKTON, CALIFORNIA
TJKM TRANSPORTATION CONSULTANTS
AUGUST 23, 2002

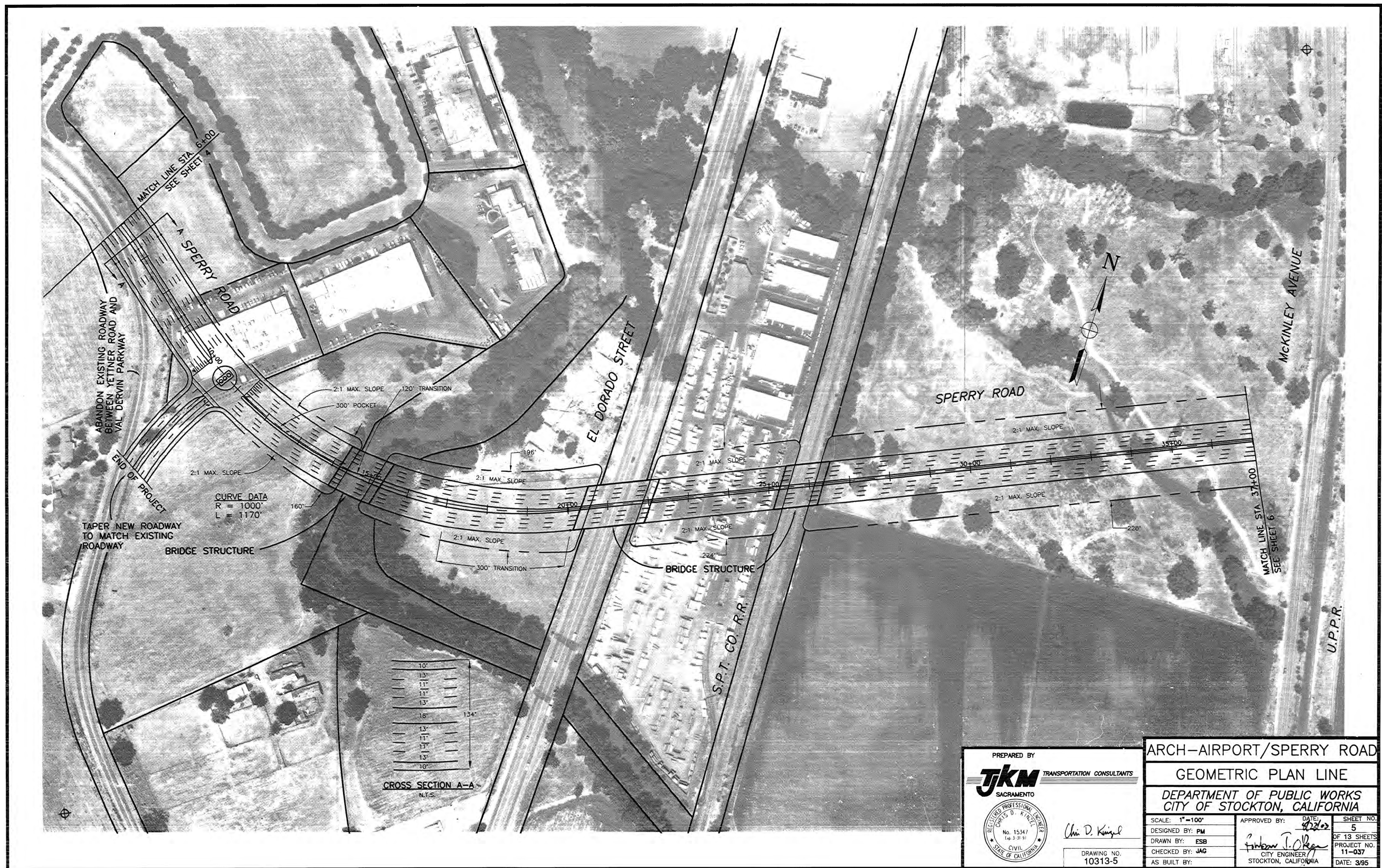


4604.2C
ARCH-AIRPORT / SPERRY ROAD
SPECIFIC ROAD PLAN
FROM INTERSTATE FIVE TO AUSTIN ROAD
TJKN TRANSPORTATION CONSULTANTS
AUGUST 23, 2002

PREPARED BY TJKN TRANSPORTATION CONSULTANTS SACRAMENTO		ARCH-AIRPORT/SPERRY ROAD GEOMETRIC PLAN LINE DEPARTMENT OF PUBLIC WORKS CITY OF STOCKTON, CALIFORNIA	
SCALE: AS NOTED	DESIGNED BY: PM	APPROVED BY: <i>[Signature]</i> CITY ENGINEER STOCKTON, CALIFORNIA	SHEET NO. 3
DRAWN BY: ESB	CHECKED BY: JAG		OF 113 SHEETS
AS BUILT BY:			PROJECT NO. 11-037
	DRAWING NO. 10313-3		DATE: 3/95

4604.2C





4604.4C
 ARCH-AIRPORT / SPERRY ROAD
 SPECIFIC ROAD PLAN
 FROM INTERSTATE FIVE TO AUSTIN ROAD
 GEOMETRIC PLAN LINE
 JTKM TRANSPORTATION CONSULTANTS
 AUGUST 23, 2002

4604.4C



PREPARED BY
JKM TRANSPORTATION CONSULTANTS
SACRAMENTO

REGISTERED PROFESSIONAL ENGINEER
No. 15347
Exp. 3-31-97
CIVIL
STATE OF CALIFORNIA

Chris D. Kuehl

DRAWING NO.
10313-6

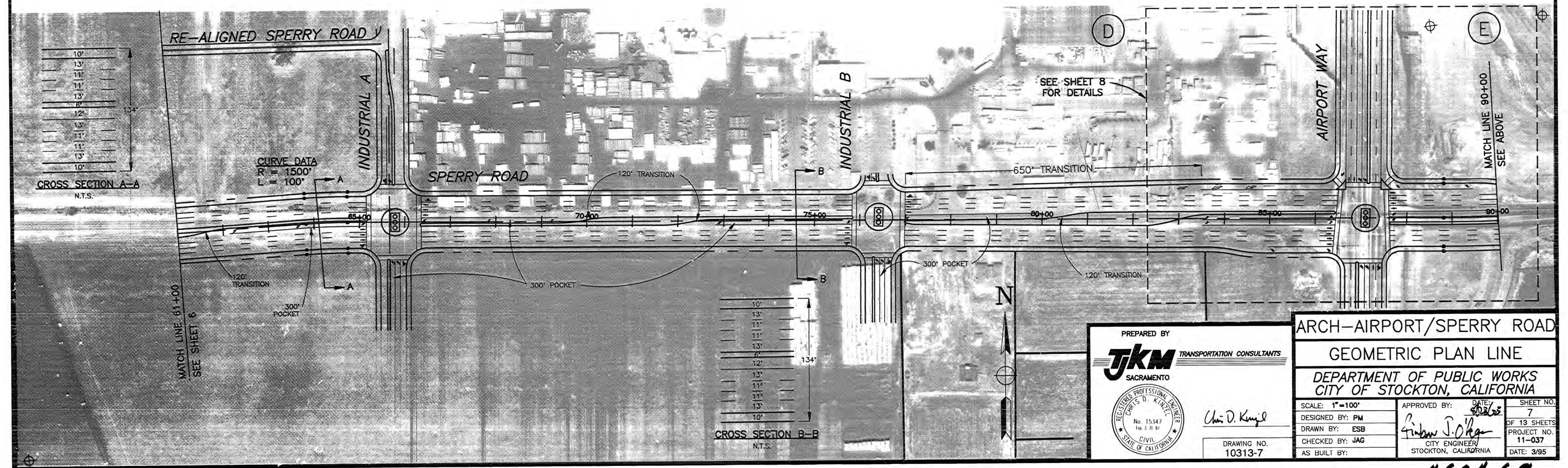
ARCH-AIRPORT/SPERRY ROAD
GEOMETRIC PLAN LINE

DEPARTMENT OF PUBLIC WORKS
CITY OF STOCKTON, CALIFORNIA

SCALE: 1"=100'	APPROVED BY: <i>[Signature]</i>	DATE: 4/22/97	SHEET NO. 6
DESIGNED BY: PM	OF 13 SHEETS		
DRAWN BY: ESB	PROJECT NO. 11-037		
CHECKED BY: JAG	DATE: 3/95		
AS BUILT BY:	CITY ENGINEER STOCKTON, CALIFORNIA		

4604.5C

4604.5C
ARCH-AIRPORT / SPERRY ROAD
SPECIFIC ROAD PLAN
FROM INTERSTATE FIVE TO AUSTIN ROAD
GEOMETRIC PLAN LINE
JKM TRANSPORTATION CONSULTANTS
AUGUST 23, 2002





PREPARED BY
TJKM TRANSPORTATION CONSULTANTS
SACRAMENTO

REGISTERED PROFESSIONAL ENGINEER
No. 15347
Exp. 3-31-97
CIVIL
STATE OF CALIFORNIA

Chris D. Kuehl

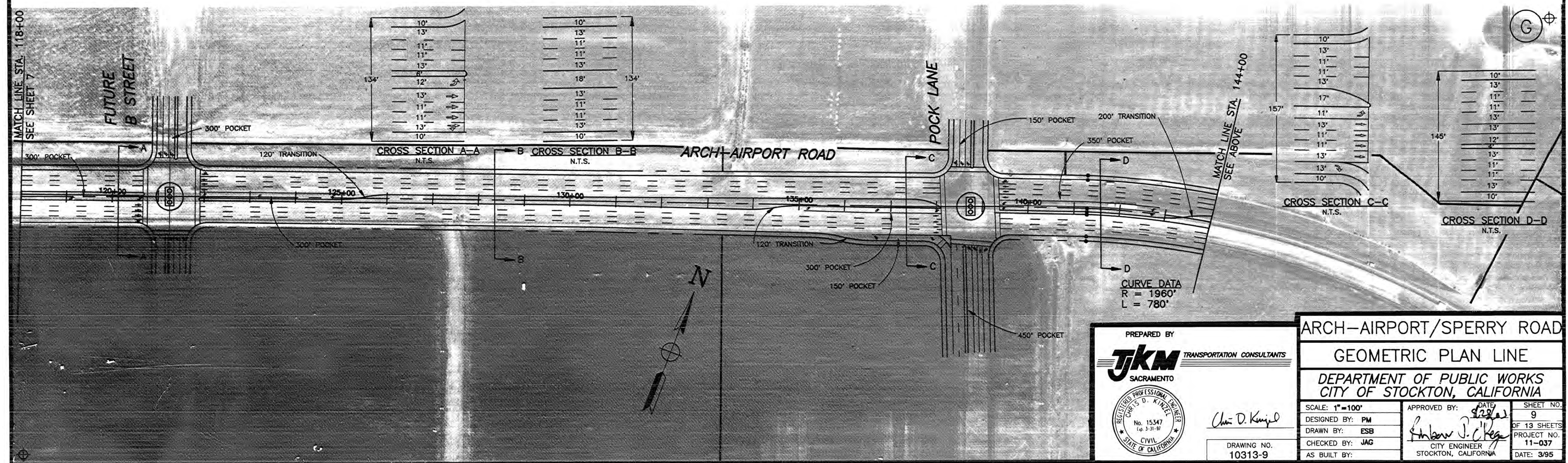
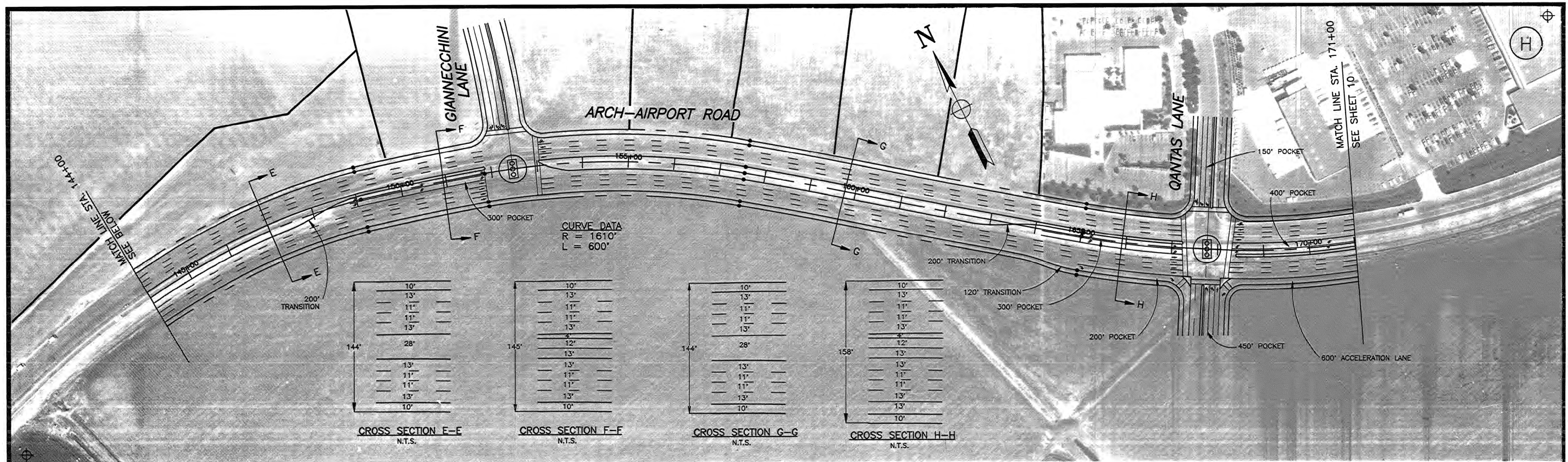
DRAWING NO.
10313-8

ARCH-AIRPORT/SPERRY ROAD
GEOMETRIC PLAN LINE
DEPARTMENT OF PUBLIC WORKS
CITY OF STOCKTON, CALIFORNIA

SCALE: 1" = 50'	APPROVED BY: <i>[Signature]</i> DATE: 8/22/02	SHEET NO. 8
DESIGNED BY: PM	<i>[Signature]</i> CITY ENGINEER STOCKTON, CALIFORNIA	OF 13 SHEETS
DRAWN BY: ESB		PROJECT NO. 11-037
CHECKED BY: JAG		DATE: 3/95
AS BUILT BY:		

4604.7C

4604.7C
ARCH-AIRPORT/SPERRY ROAD
STOCKTON, CALIFORNIA
INTERSTATE FIVE TO AUSTIN ROAD
GEOMETRIC PLAN LINE
TJKM TRANSPORTATION CONSULTANTS
AUGUST 23, 2002



PREPARED BY
JTKM TRANSPORTATION CONSULTANTS
SACRAMENTO

REGISTERED PROFESSIONAL ENGINEER
No. 15347
Exp. 3-31-97
CIVIL
STATE OF CALIFORNIA

ARCH-AIRPORT/SPERRY ROAD
GEOMETRIC PLAN LINE
DEPARTMENT OF PUBLIC WORKS
CITY OF STOCKTON, CALIFORNIA

SCALE: 1"=100'

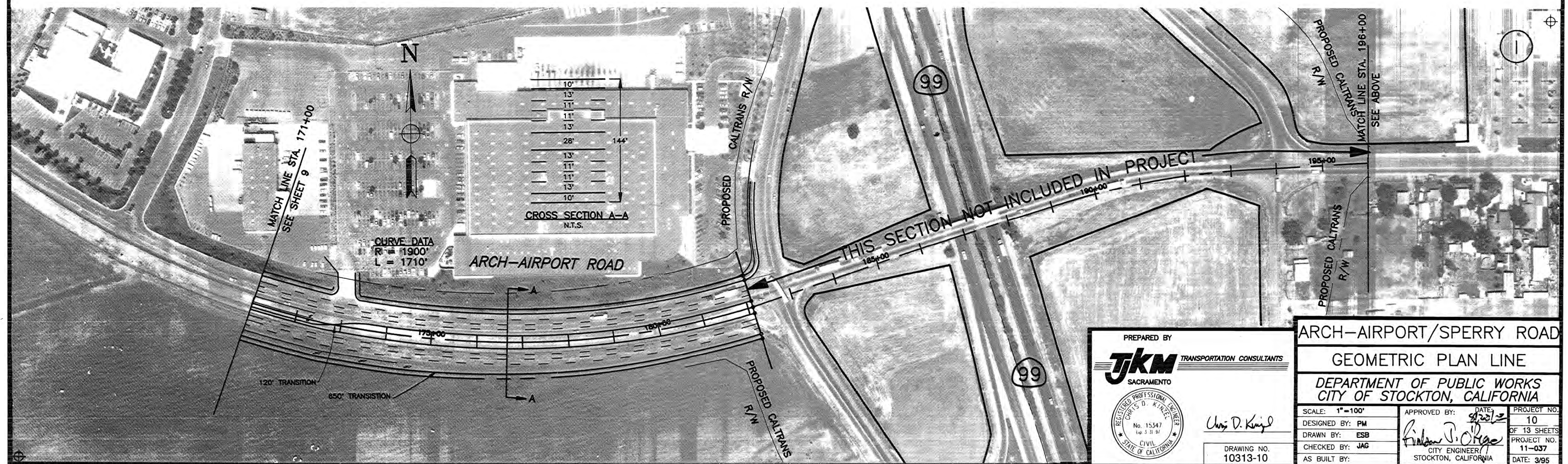
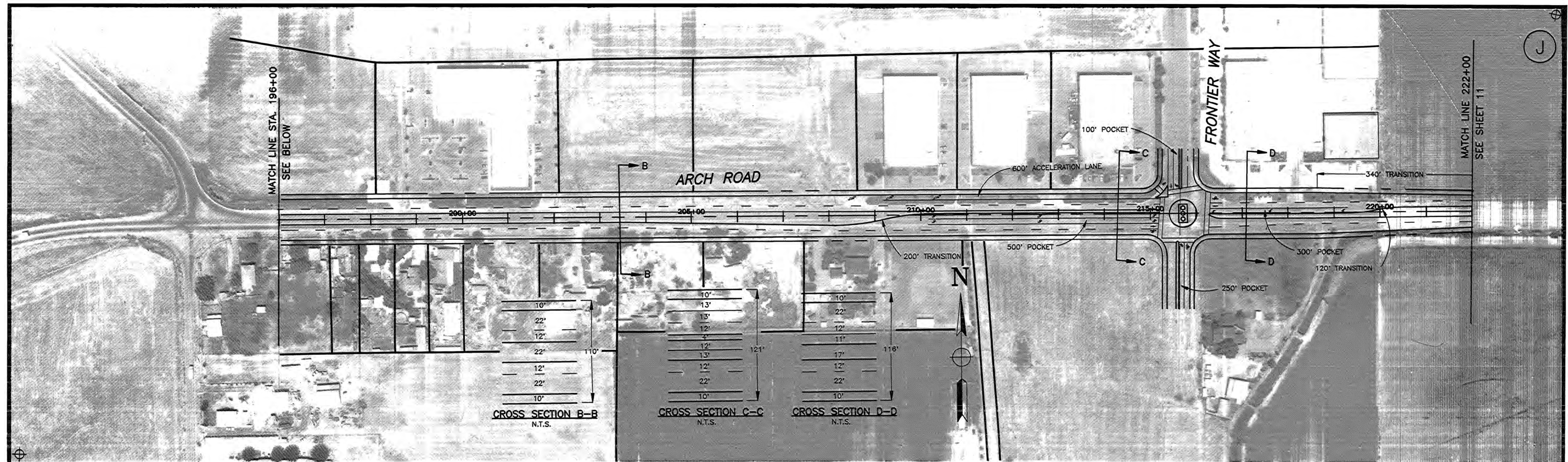
DESIGNED BY: PM
DRAWN BY: ESB
CHECKED BY: JAG
AS BUILT BY:

APPROVED BY: *Chris D. Kujal*
DATE: 8/23/02
CITY ENGINEER
STOCKTON, CALIFORNIA

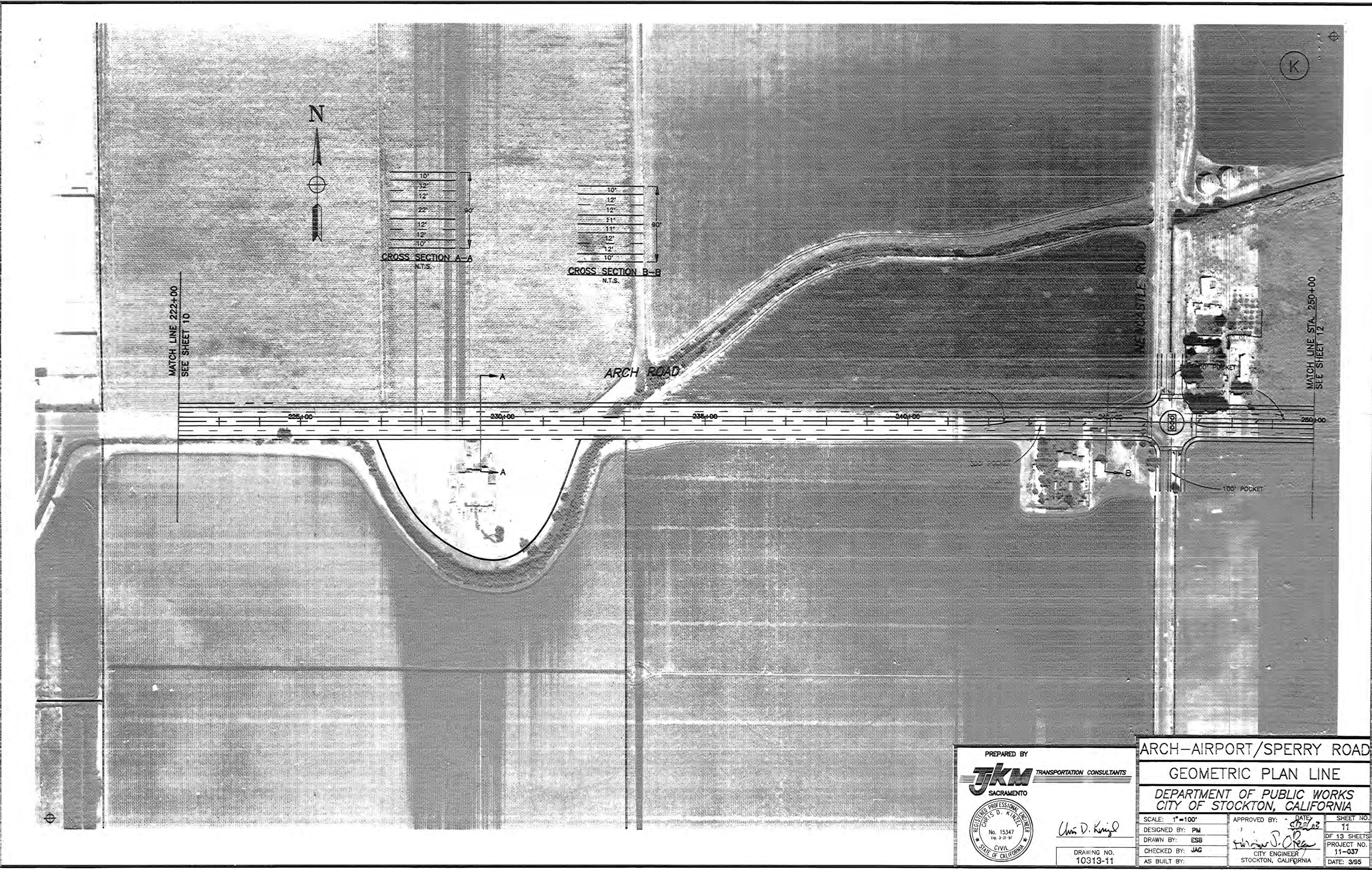
SHEET NO. 9
OF 13 SHEETS
PROJECT NO. 11-037
DATE: 3/95

4604.8C

4604.8C
ARCH-AIRPORT / SPERRY ROAD
SPECIFIC ROAD PLAN
FROM INTERSTATE FIVE TO AUSTIN ROAD
GEOMETRIC PLAN LINE
JTKM TRANSPORTATION CONSULTANTS
AUGUST 23, 2002



4604.9C



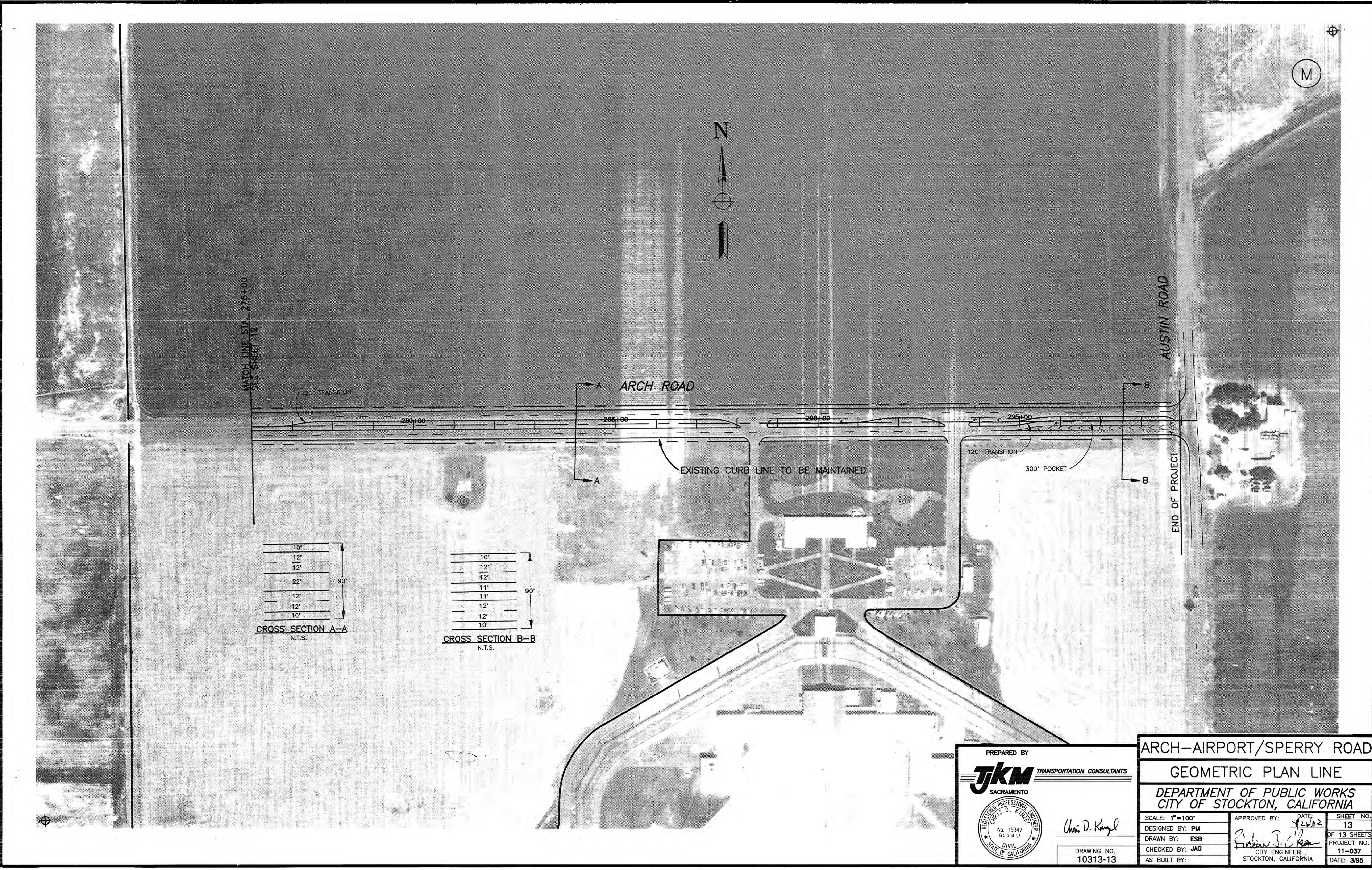
PREPARED BY JKM TRANSPORTATION CONSULTANTS SACRAMENTO		ARCH-AIRPORT/SPERRY ROAD	
No. 15347 Exp. 3-31-99 CIVIL STATE OF CALIFORNIA		GEOMETRIC PLAN LINE	
DRAWING NO. 10313-11		DEPARTMENT OF PUBLIC WORKS CITY OF STOCKTON, CALIFORNIA	
DESIGNED BY: PM	APPROVED BY: <i>[Signature]</i> DATE: 3/2/02	SHEET NO. 11	OF 13 SHEETS
DRAWN BY: ESB	CHECKED BY: JAG	PROJECT NO. 11-037	DATE: 3/95
AS BUILT BY:			

4604.10C

4604.10C
ARCH-AIRPORT / SPERRY ROAD
GEOMETRIC PLAN LINE
FROM INTERSTATE 5 TO AUSTIN ROAD
JKM TRANSPORTATION CONSULTANTS
AUGUST 23, 2002



4604.11C
ARCH-AIRPORT/SPERRY ROAD
GEOMETRIC PLAN LINE
FROM INTERSTATE FIVE TO AUSTIN ROAD
JKM TRANSPORTATION CONSULTANTS
AUGUST 23, 2002



4604.12C
ARCH-AIRPORT / SPERRY ROAD
SPECIFIC ROAD PLAN
FROM INTERSTATE FILE TO AUSTIN ROAD
GEOMETRIC PLAN LINE
THIRD TRANSITION / ACTION CONSULTANTS
AUGUST 23, 2002

4604.12C