

**Municipal Utilities Department
Water Division
Capital Projects Update**

COUNCIL WATER COMMITTEE

Item 26-0021

January 8, 2026



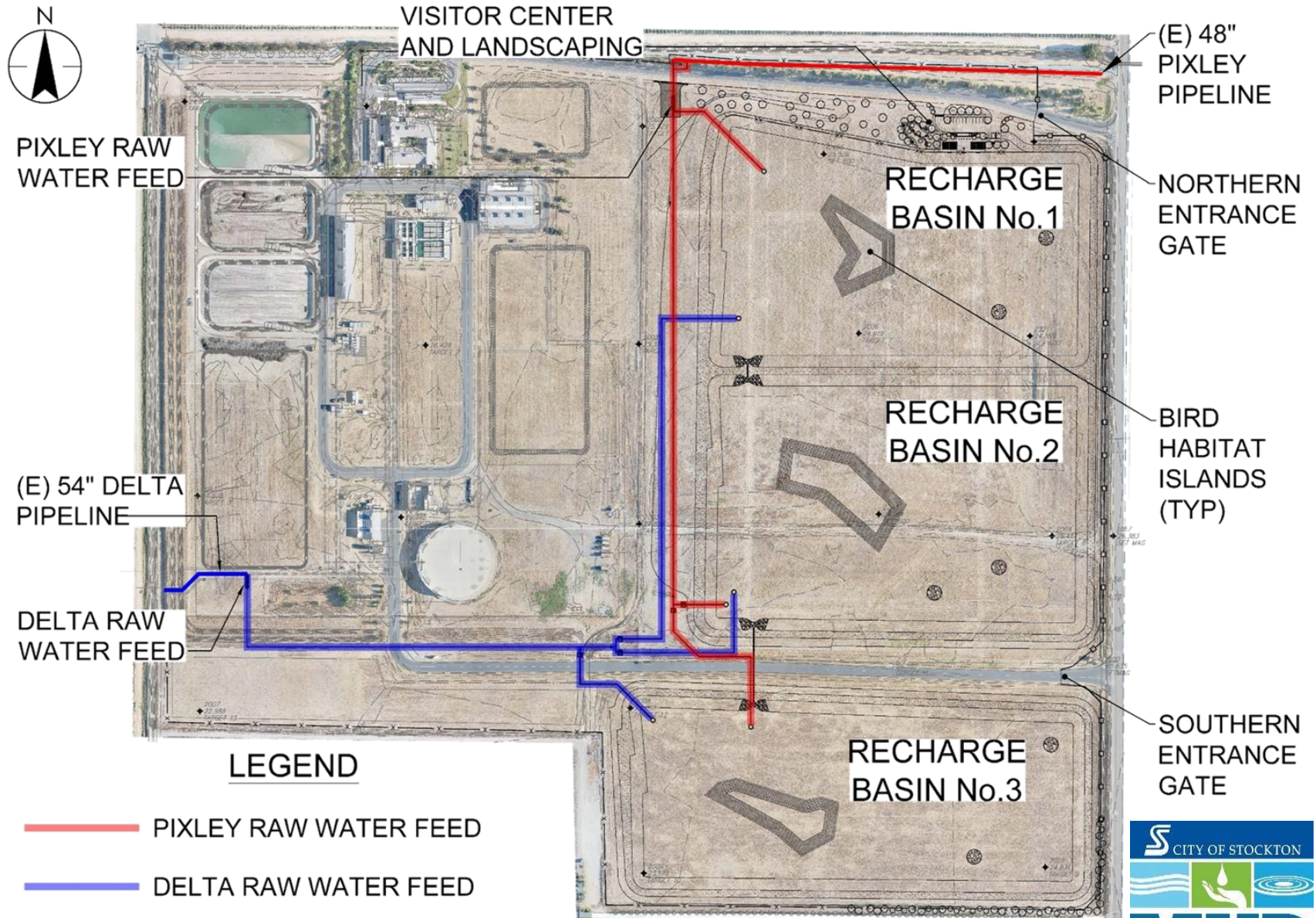
Current Projects

- Groundwater Recharge Project (Slide 4)
- Automated Metering Infrastructure
- Northeast Reservoir
- Cathodic Protection at 14-mile and Weston Ranch Reservoirs
- Emergency Standby Generators (Slide 8)
 - South Stockton System Wells 3 and 9.

Future Projects

- Delta Water Treatment Plant Campus Improvements
- Well 30 upgrades to remove Trichloro propane (1, 2, 3, -TCP)
- Well 33 Site Development
- Well SSS10 – Purchase Land
- Emergency Standby Generators Weston Ranch Reservoir

SITE PLAN – Groundwater Recharge Project



Progress to Date – Groundwater Recharge Project

- Earthwork nearly complete
 - Ponds, Islands, and Levees substantially complete
- Finalizing the designs for the piping infrastructure, roads, fencing, and visitor center.
- Project delayed until spring 2026. (rainy season)



Visitor Center– Groundwater Recharge Project

- Public Visitor Center
- Educational Signage
- Small Park
- Walking trail
- Wildlife habitat (Bird Islands)



PROJECT ELEMENTS LEGEND

CODE	DESCRIPTION	CODE	DESCRIPTION
024	VEHICULAR ENTRY/EXITING GATE	028	BUS DROP-OFF/PARKING AREA ONLY
025	CHARLUM FENCE, TYP.	029	ACCENT TREE, TYP.
026	ASPHALT PAVED PARKING LOT (15 STANDARD AND 2 ADA-COMPLIANT SPACES WITH CURBSTOP)	030	EXISTING TREE TO REMAIN - RETAIN AND PROTECT, TYP.
027	5" WIDE CONCRETE WALKWAY, TYP.	031	TUBULAR STEEL FENCE, TYP.
028	PRE-ENGINEERED SINGLE STALL RESTROOM	032	COBBLE DRY ARROYO WITH NATIVE PLANTING
029	TWO (2) PRE-ENGINEERED SHADE STRUCTURES	033	POLY-DOWN METAL BOLLARDS, TYP.
030	EDUCATIONAL SIGNAGE, TYP.	034	PARKING LOT ENTRY ONLY
031	8" TALL TUBULAR STEEL VIEW FENCE, TYP.	035	PARKING LOT EXIT ONLY
032	TRASH/RECEPTACLE, TYP.	036	NATIVE AND/OR LOW WATER-USE HEDGES, TYP.
033	5" WIDE DECOMPOSED GRANITE PATHWAY, TYP.	037	EDGE OF EXISTING ROAD
034	BOULDER, TYP.	038	EXISTING LIGHT FIXTURE/SITE UTILITIES
035	8" ADA-COMPLIANT FENCE TABLE ON DECOMPOSED GRANITE, TYP.	039	8" WIDE ADA-COMPLIANT DECOMPOSED GRANITE PATHWAY, TYP.
036	DROUGHT-TOLERANT PLANTING AREA, TYP.	040	ALUMINUM GATE ANCHOR
037	LARGE SHADE TREE, TYP.	041	3D PRINTED EDUCATIONAL SIGNAGE/MAP



HELIX
Environmental Planning

1000 HIGH STREET, SUITE 100
STOCKTON, CA 95210
TEL: (209) 944-1000
WWW.HELIXPLAN.COM

**STOCKTON DELTA WATER
TREATMENT PLANT GW**
WESTERN UTILITY MANAGEMENT

CONCEPTUAL LANDSCAPE PLAN #1
ENLARGEMENT (NORTH ENTRY) AND
DESIGN INSPIRATION IMAGES

1"=50'-0"

NORTH

DATE: 10/20/2020

NEXGEN

GP

L-1.0

Visitor Center– Groundwater Recharge Project



Wells SSS3 and SSS9 – Emergency Standby Generators

- Currently 0 Standby Emergency Generators on City Infrastructure in South Stockton Water System
- Protects up to 6 million gallons per day of source water
- Project includes Generators and Automatic Transfer Switches
- Expected completion March 2026



QUESTIONS?

