





Municipal Utilities Department Delta Water Treatment Plant Campus Improvements Project

Council Water Committee

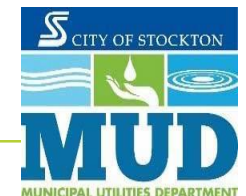
Item 26-0417

April 9, 2026



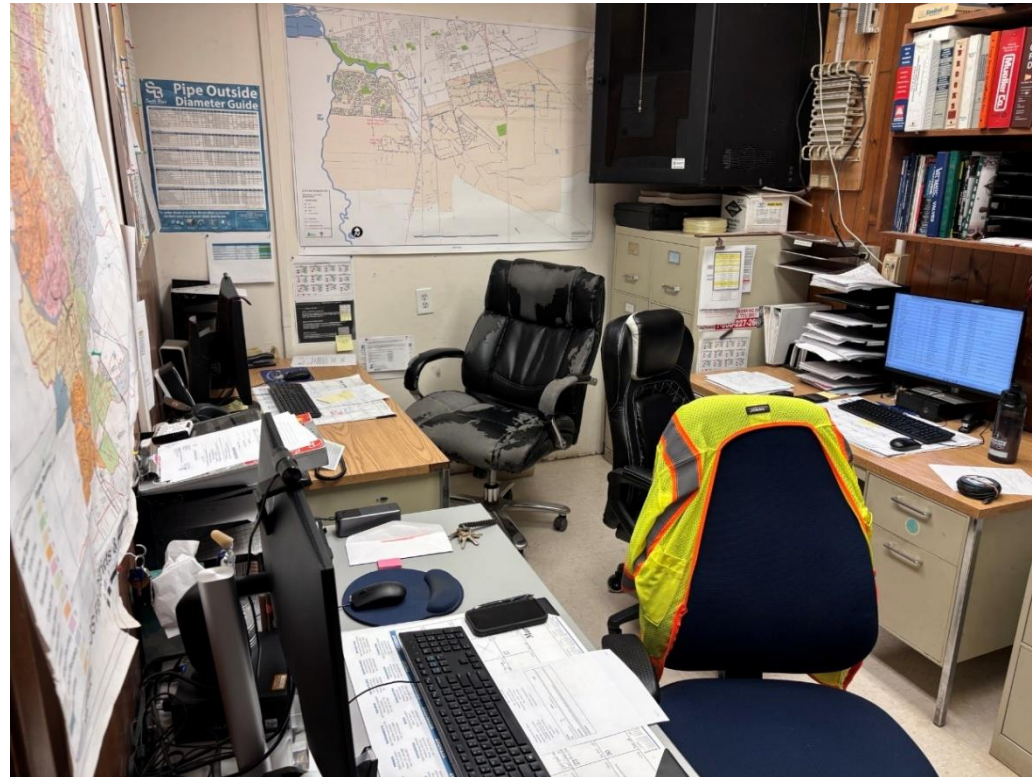
Campus Improvements Project Goals

- Consolidate All Water Divisions to DWTP
- Build New Facilities and Update Infrastructure
- Build New Public Space for MUD & City
- Create MUD's Northern Service Hub
- Improve Climate Resiliency & Passive Power Generation Capabilities
- Integrate All Facilities Within a Cohesive Environmentally-Sensitive Campus



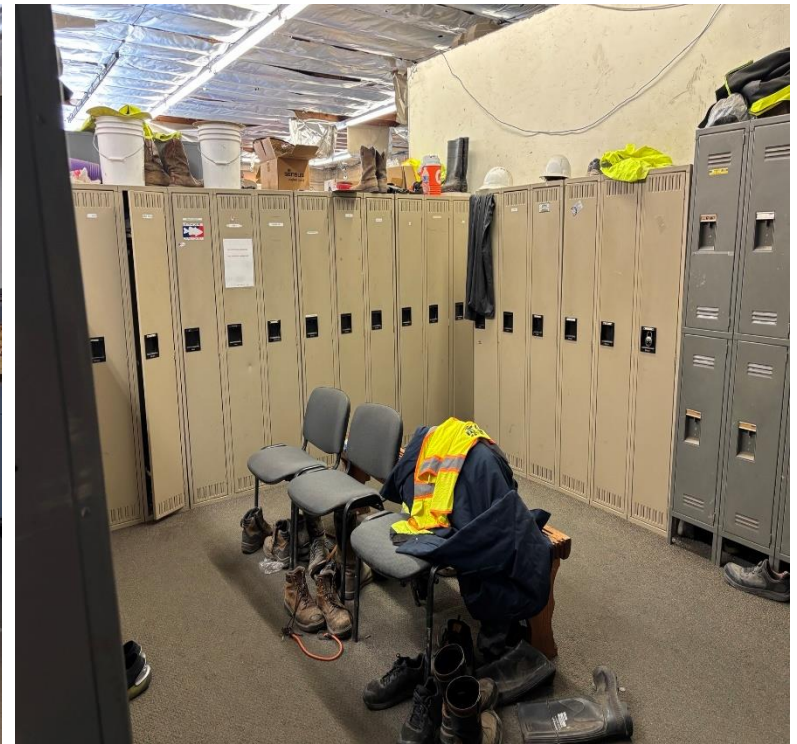
Water Field Office

- 30 Employees
- Obsolete building suitable for 15-20 employees
- ADA compliance



Water Field Office

- Custom Locker Room



Water Field Office

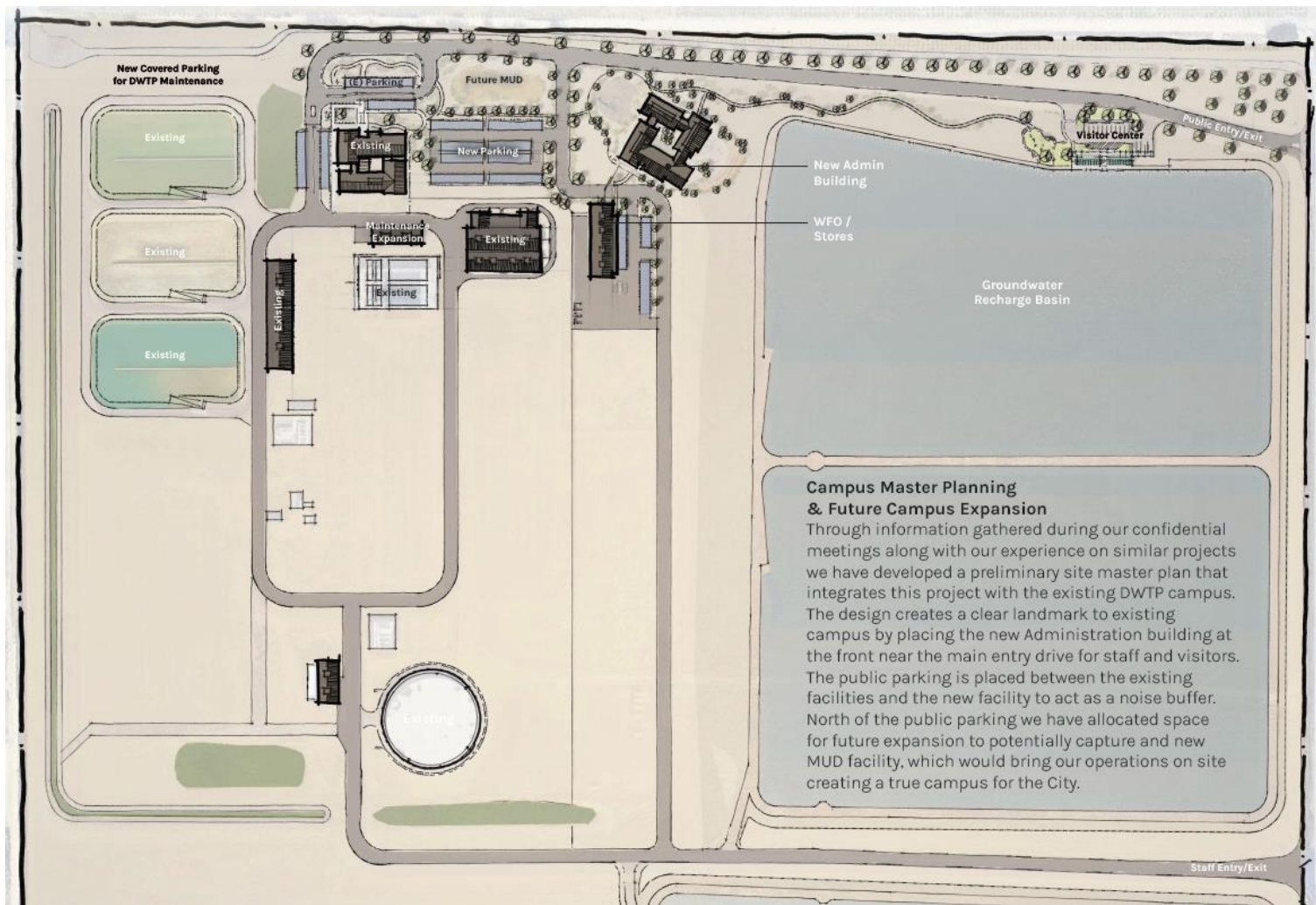
- Break Room/Meeting Room



Campus Improvements Project - Development

- Project UH14014
- October 23, 2024, MUD requested Statements of Qualifications (SOQs) from interested and qualified consulting firms
- Received 10 SOQs
- 3 firms selected for Request for Proposals (RFPs)
- Staff interviewed and did facility tours of 3 firms
- Negotiations with selected firm nearly complete
- Progressive Design Build Project
- Phase 1 – Design
- Phase 2 - Construction

Campus Improvements Project Overview



SITE PLAN – Campus Improvements



New Water Admin Building & Conference Center



WFO Shop and MUD Stores



Campus Improvements Project

- Bring all Water Division to Delta Water Treatment Plant



A Cohesive Campus
The Delta Water Treatment campus is envisioned as a cohesive environment that blends function, education, and ecology into a unified experience. Pedestrian pathways weave throughout the site, creating intuitive connections between buildings and outdoor spaces while encouraging interaction and exploration. Native landscaping reinforces a sense of place, highlighting the natural ecology of the region and reducing long-term maintenance. Architectural consistency is expressed through gable rooflines and prominent cupolas, which not only establish a recognizable identity but also create a timeless aesthetic that ties each facility together into a harmonious campus.

Designing for Future Needs
It's important for the campus to be designed with flexibility in mind, allowing for seamless integration of future facilities such as an additional administrative building or expanded parking areas. Thoughtful site planning ensures that growth can occur without disrupting daily operations, preserving both functionality and the cohesive campus character.

Questions

