

OWNER'S STATEMENT:

WE, THE UNDERSIGNED, HEREBY STATE THAT WE ARE ALL THE PARTIES HAVING RECORD TITLE INTEREST IN THE LANDS SUBDIVIDED AND SHOWN ON THIS FINAL MAP OF "TRACT NO. 4106, SUBDIVISIONS OF SAN JOAQUIN COUNTY, WESTLAKE VILLAGES, UNIT 1A", CITY OF STOCKTON, CALIFORNIA, AND WE HEREBY CONSENT TO THE PREPARATION AND FILING OF THIS FINAL MAP IN THE OFFICE OF THE COUNTY RECORDER OF SAN JOAQUIN COUNTY, CALIFORNIA.

WE ALSO OFFER THE REAL PROPERTY DESCRIBED BELOW, DEDICATED AS AN EASEMENT FOR PUBLIC PURPOSES, ALL STORM DRAIN EASEMENTS AND, IN EASEMENT, THE VARIABLE WIDTH WIDENING OF RIGHT-OF-WAY ALONG WESTLAKE DRIVE, ALL AS SHOWN ON THIS FINAL MAP.

OWNER: STOCKTON WESTLAKE INVESTMENT, LLC, A CALIFORNIA LIMITED LIABILITY COMPANY

BY: Michael A. Spanos
MICHAEL A. SPANOS, MANAGER

DATE: 07-19-2021

BENEFICIARY: FRONTIER LAND COMPANIES, A CALIFORNIA CORPORATION

BY: George K. Gibson
GEORGE K. GIBSON, SENIOR VICE PRESIDENT

DATE: 7/20/2021

BENEFICIARY: PULTE HOME COMPANY, LLC, A MICHIGAN LIMITED LIABILITY COMPANY, AS SUCCESSOR BY CONVERSION OF PULTE HOME CORPORATION, A MICHIGAN CORPORATION

BY: Derrek C. Wiles
DEREK C. WILES, DIVISION PRESIDENT

DATE: 7/26/2021

LIEN HOLDER: CITY OF STOCKTON, A CALIFORNIA MUNICIPAL CORPORATION

BY: Harry Black
HARRY BLACK, CITY MANAGER

DATE: 8/6/2021

SEE SHEET 9 FOR NOTARY STATEMENTS

TOWN(S) WHOSE NAME(S) IS/ARE

OMITTED SIGNATURES:

PURSUANT TO SECTION 66436 OF THE CALIFORNIA SUBDIVISION MAP ACT, THE SIGNATURES OF THE FOLLOWING INTEREST HOLDERS HAVE BEEN OMITTED.

DOCUMENT: BOOK "A", OF DEEDS, VOLUME 395, PAGE 48
INTEREST: IRRIGATION AND DRAINAGE CANAL
RESERVED BY: DELTA FARMS RECLAMATION DISTRICT NO. 2042

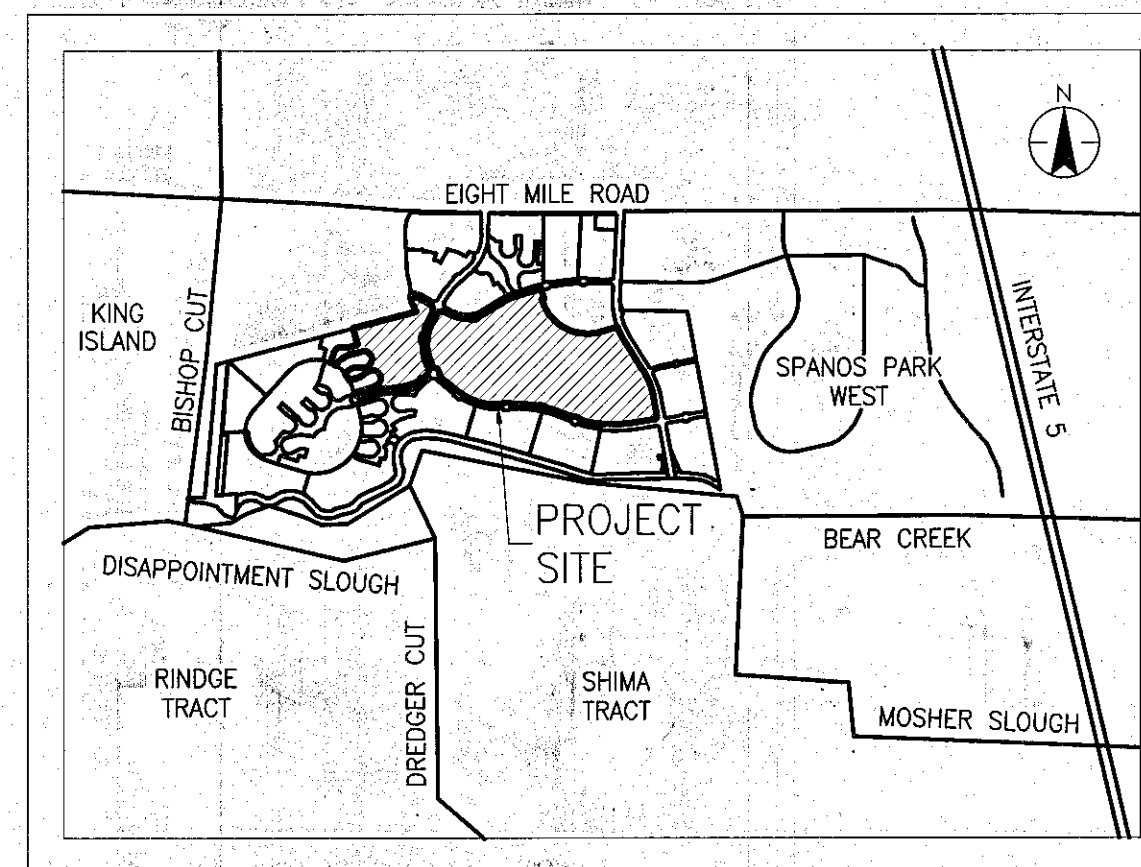
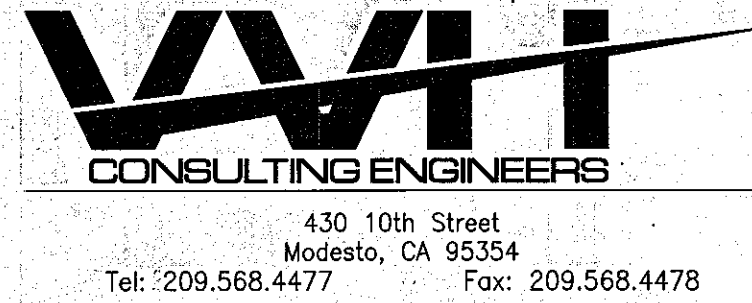
DOCUMENT: INSTRUMENT NO. 89011726
INTEREST: RIGHT OF ENTRY
RESERVED BY: RAYMOND GRANNUCCI, ET. UX.

TRACT NO. 4106

SUBDIVISIONS OF SAN JOAQUIN COUNTY

WESTLAKE VILLAGES, UNIT 1A

BEING A SUBDIVISION OF LOTS 10, 21, 22, 23, 24, 25, AND 32 AND PORTIONS OF SCOTT CREEK DRIVE AND WESTLAKE DRIVE, AS SHOWN ON WESTLAKE VILLAGES, UNIT NO. 1, FILED IN BOOK 40 OF MAPS AND PLATS, AT PAGE 57, AND LOT C AS SHOWN ON WESTLAKE VILLAGES, UNIT NO. 12 - VILLAGE F, FILED IN BOOK 43 OF MAPS AND PLATS, AT PAGE 101, ALL OF SAN JOAQUIN COUNTY RECORDS, LYING IN SECTIONS 2 & 3, TOWNSHIP 2 NORTH, RANGE 5 EAST, MOUNT DIABLO BASE AND MERIDIAN
CITY OF STOCKTON, SAN JOAQUIN COUNTY, CALIFORNIA
JULY, 2021



VICINITY MAP
NOT TO SCALE

CITY CLERK'S STATEMENT:

THIS IS TO STATE THAT AT ITS REGULARLY HELD MEETING ON THE _____ DAY OF _____, 20____, THE CITY COUNCIL OF THE CITY OF STOCKTON, CALIFORNIA, PER COUNCIL RESOLUTION NO. _____ APPROVED THIS FINAL MAP OF "TRACT NO. 4106, SUBDIVISIONS OF SAN JOAQUIN COUNTY, WESTLAKE VILLAGES, UNIT 1A", CITY OF STOCKTON, CALIFORNIA, AND ACCEPTED ON BEHALF OF THE PUBLIC FOR PUBLIC USE, THE OFFER OF DEDICATION OF ALL STORM DRAIN EASEMENTS, ALL AS SHOWN ON THIS FINAL MAP, AND ACCEPTED THE OFFER OF DEDICATION OF THE VARIABLE WIDTH WIDENING OF RIGHT-OF-WAY ALONG WESTLAKE DRIVE, SUBJECT TO SATISFACTORY COMPLETION OF IMPROVEMENTS THEREON OF SAID STREET RIGHT-OF-WAY IN ACCORDANCE WITH CHAPTER 16, ARTICLE 6 OF THE STOCKTON MUNICIPAL CODE, AND ANY AMENDMENTS THERETO, APPLICABLE AT THE TIME OF APPROVAL OF THE TENTATIVE MAP, AND PURSUANT TO SECTION 66434(g) OF THE CALIFORNIA SUBDIVISION MAP ACT, ABANDONED THOSE PORTIONS OF WESTLAKE DRIVE AND SCOTT CREEK DRIVE AS DEDICATED ON THE MAP OF WESTLAKE VILLAGES UNIT NO. 1, FILED IN BOOK 40 OF MAPS AND PLATS, AT PAGE 57, SAN JOAQUIN COUNTY RECORDS, AS SHOWN ON THIS FINAL MAP.

DATED THIS _____ DAY OF _____, 20____.

ELIZA R. GARZA, CMC
CITY CLERK

SURVEYOR'S STATEMENT:

THIS MAP WAS PREPARED BY ME OR UNDER MY DIRECTION AND IS BASED UPON A FIELD SURVEY IN CONFORMANCE WITH THE REQUIREMENTS OF THE SUBDIVISION MAP ACT AND LOCAL ORDINANCE AT THE REQUEST OF STOCKTON WESTLAKE INVESTMENT, LLC, ON MAY 6, 2020. I HEREBY STATE THAT ALL THE MONUMENTS ARE OF THE CHARACTER AND OCCUPY THE POSITIONS INDICATED OR THAT THEY WILL BE SET IN THOSE POSITIONS BEFORE DECEMBER 31, 2022, AND THAT THE MONUMENTS ARE, OR WILL BE, SUFFICIENT TO ENABLE THE SURVEY TO BE RETRACED, AND THAT THIS FINAL MAP SUBSTANTIALLY CONFORMS TO THE CONDITIONALLY APPROVED TENTATIVE MAP.

DATED THIS 28 DAY OF July, 2021.

RYAN VANCE, L.S. 8225
LICENSE EXPIRATION DATE: 06/30/23

CITY ENGINEER'S STATEMENT:

I, ERIC ALVAREZ, HEREBY STATE THAT I AM THE CITY ENGINEER OF THE CITY OF STOCKTON, CALIFORNIA, AND THAT I HAVE EXAMINED THIS FINAL MAP OF "TRACT NO. 4106, SUBDIVISIONS OF SAN JOAQUIN COUNTY, WESTLAKE VILLAGES, UNIT 1A", CITY OF STOCKTON, CALIFORNIA, AND THAT THE SUBDIVISION SHOWN HEREON IS SUBSTANTIALLY THE SAME AS IT APPEARED ON THE TENTATIVE MAP, AND ANY APPROVED ALTERATIONS THEREOF. I FURTHER STATE THAT THIS FINAL MAP COMPLIES WITH ALL THE PROVISIONS OF CHAPTER 16, ARTICLE 6 OF THE STOCKTON MUNICIPAL CODE, AND ANY AMENDMENTS THERETO, APPLICABLE AT THE TIME OF APPROVAL OF THE TENTATIVE MAP.

DATED THIS 19th DAY OF September, 2021.

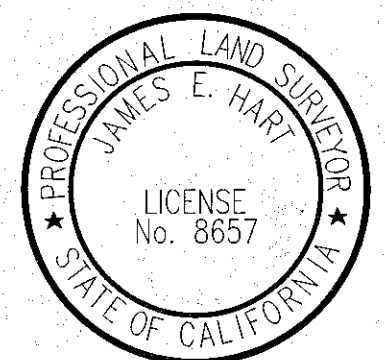
ERIC ALVAREZ, R.C.E. 57830
CITY ENGINEER
REGISTRATION EXPIRATION DATE: 06/30/22

COUNTY SURVEYOR'S STATEMENT:

I, JAMES E. HART, HEREBY STATE THAT I HAVE EXAMINED THIS FINAL MAP OF "TRACT NO. 4106, SUBDIVISIONS OF SAN JOAQUIN COUNTY, WESTLAKE VILLAGES, UNIT 1A", CITY OF STOCKTON, CALIFORNIA AND THAT THE SUBDIVISION SHOWN HEREON COMPLIES WITH ALL THE PROVISIONS OF CHAPTER 2 OF THE CALIFORNIA SUBDIVISION MAP ACT, AS AMENDED, AND THAT THIS FINAL MAP IS TECHNICALLY CORRECT.

DATED THIS 3RD DAY OF SEPTEMBER, 2021.

JAMES E. HART
JAMES E. HART, L.S. 8657
COUNTY SURVEYOR

RECORDER'S STATEMENT:

FILED THIS _____ DAY OF _____, 20____, AT _____ M.

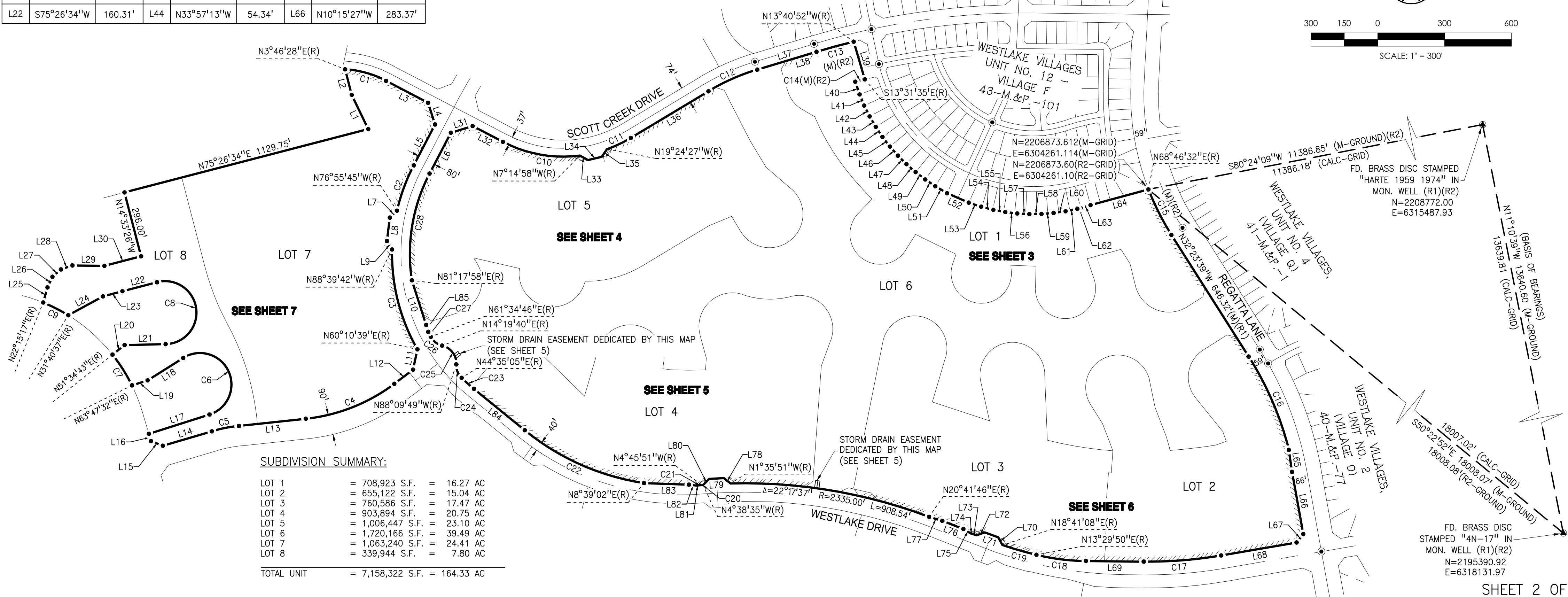
IN BOOK _____ OF MAPS AND PLATS, AT PAGE _____, AT THE REQUEST OF VWH CONSULTING ENGINEERS.

FEE \$ _____

STEVE J. BESTOLARIDES
ASSESSOR-RECORDER-COUNTY CLERK

BY: _____
ASSISTANT/DEPUTY RECORDER

LINE DATA TABLE			LINE DATA TABLE			LINE DATA TABLE			LINE DATA TABLE			CURVE DATA TABLE			
LINE	BEARING	DISTANCE	LINE	BEARING	DISTANCE	LINE	BEARING	DISTANCE	LINE	BEARING	DISTANCE	CURVE	DELTA	RADIUS	LENGTH
L1	S25°44'26"E	170.50'	L23	S75°06'25"W	90.32'	L45	N37°40'21"W	54.34'	L67	N38°20'40"E	48.13'	C1	23°46'11"	463.00'	192.08'
L2	S14°31'26"E	118.30'	L24	S61°24'41"W	176.93'	L46	N41°24'38"W	54.34'	L68	N80°14'14"E	343.30'	C2	14°28'24"	860.00'	217.24'
L3	N62°27'21"W	212.51'	L25	S15°36'32"W	70.16'	L47	N45°08'55"W	54.34'	L69	S89°20'29"E	259.42'	C3	31°09'39"	860.00'	467.72'
L4	N17°51'04"W	102.53'	L26	N24°57'34"E	52.64'	L48	N48°53'13"W	54.34'	L70	S28°37'59"E	39.16'	C4	30°46'30"	805.00'	432.39'
L5	N27°32'39"E	206.57'	L27	N48°57'19"E	50.53'	L49	N52°37'30"W	54.34'	L71	S69°37'39"E	64.01'	C5	10°13'39"	695.00'	124.06'
L6	N27°32'39"E	206.57'	L28	N71°15'05"E	54.59'	L50	N56°20'41"W	54.34'	L72	N70°24'11"E	39.70'	C6	194°33'19"	141.00'	478.78'
L7	N45°46'35"E	44.64'	L29	N89°23'17"W	143.31'	L51	N59°12'58"W	61.31'	L73	S68°40'57"E	24.12'	C7	12°12'49"	768.00'	163.71'
L8	N7°12'17"E	106.00'	L30	S75°26'34"W	170.20'	L52	N66°27'01"W	106.02'	L74	N73°11'13"E	2.39'	C8	193°13'18"	141.00'	475.50'
L9	N31°22'01"W	44.64'	L31	N72°56'21"E	102.53'	L53	N71°45'23"W	58.91'	L75	S59°13'13"E	39.38'	C9	9°25'20"	768.00'	126.30'
L10	S17°47'36"E	210.31'	L32	S62°27'21"E	153.11'	L54	N75°43'02"W	56.31'	L76	S68°40'57"E	101.31'	C10	34°47'37"	587.00'	356.46'
L11	S12°05'23"W	93.34'	L33	S60°39'04"E	41.03'	L55	N79°31'16"W	54.34'	L77	S73°25'08"E	62.22'	C11	11°37'17"	587.00'	119.06'
L12	N53°04'55"E	105.24'	L34	N76°40'18"E	64.00'	L56	N83°15'26"W	54.34'	L78	N51°46'11"W	39.08'	C12	14°16'58"	963.00'	240.06'
L13	N83°51'26"E	301.57'	L35	N33°59'40"E	41.03'	L57	N86°59'35"W	54.34'	L79	S86°54'42"W	65.39'	C13	3°03'54"	3238.00'	173.21'
L14	N73°37'46"E	229.13'	L36	N58°58'16"E	406.27'	L58	S89°16'15"W	54.34'	L80	S45°31'45"W	39.13'	C14	0°49'13"	3062.00'	43.84'
L15	S68°29'44"E	57.01'	L37	S73°15'14"W	277.28'	L59	S85°32'06"W	54.34'	L81	S48°20'15"W	1.75'				
L16	N16°22'14"W	33.91'	L38	N73°15'14"E	144.00'	L60	S81°47'57"W	54.34'	L82	N83°42'03"W	38.30'				
L17	N72°21'18"E	285.50'	L39	N16°22'10"W	176.21'	L61	S78°04'27"W	54.02'	L83	N87°57'05"W	201.52'				
L18	N57°47'59"E	188.91'	L40	N18°45'52"W	60.17'	L62	S77°33'44"W	15.31'	L84	S50°51'37"E	293.81'				
L19	N72°21'18"E	73.40'	L41	N22°43'12"W	54.20'	L63	S73°33'31"W	46.06'	L85	S16°45'10"E	32.49'				
L20	S51°34'43"W	68.80'	L42	N26°26'54"W	54.34'	L64	S74°46'45"W	269.35'							
L21	N88°39'52"E	184.28'	L43	N30°11'11"W	54.34'	L65	N8°12'42"W	99.50'							
L22	S75°26'34"W	160.31'	L44	N33°57'13"W	54.34'	L66	N10°15'27"W	283.37'							



- LEGEND:**
- FOUND AND ACCEPTED MONUMENT PER (R1) AND OR (R2)
 - ◉ FOUND AND ACCEPTED MONUMENT IN MONUMENT WELL PER (R1) AND OR (R2)
 - SET 3/4" x 30" LONG IRON PIPE TAGGED L.S. 8225
- S.J.C.R. SAN JOAQUIN COUNTY RECORDS
- M.&P. MAPS AND PLATS
- (M) MEASURED
- (R) RADIAL BEARING
- ////// EXISTING RESTRICTED ACCESS PER (R1)

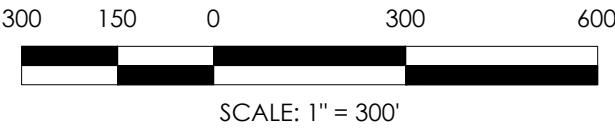
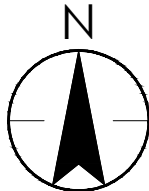
- REFERENCES:**
- (R1) WESTLAKE VILLAGES, UNIT NO. 1, LARGE LOT FINAL MAP 40-M.&P.-57
- (R2) WESTLAKE VILLAGES UNIT NO. 12 - VILLAGE F 43-M.&P.-101
- NOTES:**
- ALL BEARINGS AND DISTANCES SHOWN HEREON ARE MEASURED UNLESS OTHERWISE NOTED.
 - ALL DISTANCES AND DIMENSIONS SHOWN ARE IN FEET AND DECIMAL PARTS THEREOF.
 - ALL RECORD INFORMATION SHOWN IS FROM SAN JOAQUIN COUNTY RECORDS, UNLESS OTHERWISE SHOWN.
 - ALL BEARINGS AND DISTANCES SHOWN ON THIS SHEET ONLY ARE MEASURED (M) AND REFERENCED BY (R1) UNLESS NOTED OTHERWISE.
 - THE BEARINGS AND DISTANCES FOR L39-L64 ARE REFERENCED BY (R2).
 - SEE DETAILS FOR RIGHTS-OF-WAY AND STORM DRAIN EASEMENTS ON SHEET 8.

TRACT NO. 4106
SUBDIVISIONS OF SAN JOAQUIN COUNTY
WESTLAKE VILLAGES, UNIT 1A

BEING A SUBDIVISION OF LOTS 10, 21, 22, 23, 24, 25, AND 32 AND PORTIONS OF SCOTT CREEK DRIVE AND WESTLAKE DRIVE AS SHOWN ON WESTLAKE VILLAGES, UNIT NO. 1, FILED IN BOOK 40 OF MAPS AND PLATS, AT PAGE 57, AND LOT C AS SHOWN ON WESTLAKE VILLAGES, UNIT NO. 12 - VILLAGE F, FILED IN BOOK 43 OF MAPS AND PLATS, AT PAGE 101, ALL OF SAN JOAQUIN COUNTY RECORDS, LYING IN SECTIONS 2 & 3, TOWNSHIP 2 NORTH, RANGE 5 EAST, MOUNT DIABLO BASE AND MERIDIAN
CITY OF STOCKTON, SAN JOAQUIN COUNTY, CALIFORNIA
JULY, 2021

W&H
CONSULTING ENGINEERS

430 10th Street
Modesto, CA 95354
Tel: 209.568.4477 Fax: 209.568.4478



NOTES:

- 1. ALL BEARINGS AND DISTANCES SHOWN HEREON ARE MEASURED UNLESS OTHERWISE NOTED.
- 2. ALL DISTANCES AND DIMENSIONS SHOWN ARE IN FEET AND DECIMAL PARTS THEREOF.
- 3. ALL RECORD INFORMATION SHOWN IS FROM SAN JOAQUIN COUNTY RECORDS, UNLESS OTHERWISE SHOWN.

LINE DATA TABLE		
LINE	BEARING	DISTANCE
L37	S73°15'14"W	277.28'
L40	N18°45'52"W	60.17'
L41	N22°43'12"W	54.20'
L42	N26°26'54"W	54.34'
L43	N30°11'11"W	54.34'
L44	N33°57'13"W	54.34'
L45	N37°40'21"W	54.34'
L46	N41°24'38"W	54.34'
L47	N45°08'55"W	54.34'
L48	N48°53'13"W	54.34'
L49	N52°37'30"W	54.34'
L50	N56°20'41"W	54.34'
L51	N59°12'58"W	61.31'
L52	N66°27'01"W	106.02'
L53	N71°45'23"W	58.91'
L54	N75°43'02"W	56.31'

LINE DATA TABLE		
LINE	BEARING	DISTANCE
L55	N79°31'16"W	54.34'
L56	N83°15'26"W	54.34'
L57	N86°59'35"W	54.34'
L58	S89°16'15"W	54.34'
L59	S85°32'06"W	54.34'
L60	S81°47'57"W	54.34'
L61	S78°04'27"W	54.02'
L62	S77°33'44"W	15.31'
L63	S73°33'31"W	46.06'
L86	N73°15'14"E	133.28'
L87	S73°15'14"W	144.00'
L88	S28°15'14"W	42.43'
L89	S16°44'46"E	104.97'
L90	S60°06'57"E	66.89'
L91	S43°21'46"E	59.19'
L92	S43°50'38"W	88.69'

LINE DATA TABLE		
LINE	BEARING	DISTANCE
L93	N32°22'11"E	84.69'
L94	S19°45'07"W	42.16'
L95	N3°14'25"W	28.29'
L96	S87°57'23"E	112.94'
L97	S1°59'09"W	95.31'
L98	N18°27'46"W	95.22'
L99	S32°23'39"E	76.06'
L100	S13°44'57"E	102.96'
L101	N57°36'21"E	83.00'
L102	N12°36'21"E	42.43'
L103	N32°23'39"W	279.87'
L104	S32°23'39"E	262.20'

CURVE DATA TABLE			
CURVE	DELTA	RADIUS	LENGTH
C13	3°03'54"	3238.00'	173.21'
C14	0°49'13"	3062.00'	43.84'
C15	11°10'11"	1176.00'	229.26'
C29	43°22'12"	135.00'	102.19'
C30	12°27'49"	1026.00'	223.19'
C31	8°04'17"	1213.00'	170.88'
C32	1°28'51"	3115.00'	80.51'
C33	0°56'48"	710.00'	11.73'

LEGEND:

- FOUND AND ACCEPTED MONUMENT PER (R1) AND OR (R2)
- ⦿ FOUND AND ACCEPTED MONUMENT IN MONUMENT WELL PER (R1) AND OR (R2)
- SET 3/4" x 30" LONG IRON PIPE TAGGED L.S. 8225
- S.J.C.R. SAN JOAQUIN COUNTY RECORDS
- M.&P. MAPS AND PLATS
- (M) MEASURED
- (R) RADIAL BEARING
- ////// EXISTING RESTRICTED ACCESS PER (R1)

W&H

CONSULTING ENGINEERS

430 10th Street

Modesto, CA 95354

Tel: 209.568.4477

Fax: 209.568.4478

REFERENCES:

- (R1) WESTLAKE VILLAGES, UNIT NO. 1, LARGE LOT FINAL MAP 40-M&P-57
- (R2) WESTLAKE VILLAGES, UNIT NO. 12 - VILLAGE F FINAL MAP 43-M&P-101

TRACT NO. 4106

SUBDIVISIONS OF SAN JOAQUIN COUNTY

WESTLAKE VILLAGES, UNIT 1A

BEING A SUBDIVISION OF LOTS 10, 21, 22, 23, 24, 25, AND 32 AND PORTIONS OF SCOTT CREEK DRIVE AND WESTLAKE DRIVE, AS SHOWN ON WESTLAKE VILLAGES, UNIT NO. 1, FILED IN BOOK 40 OF MAPS AND PLATS, AT PAGE 57, AND LOT C AS SHOWN ON WESTLAKE VILLAGES, UNIT NO. 12 - VILLAGE F, FILED IN BOOK 43 OF MAPS AND PLATS, AT PAGE 101, ALL OF SAN JOAQUIN COUNTY RECORDS, LYING IN SECTIONS 2 & 3, TOWNSHIP 2 NORTH, RANGE 5 EAST, MOUNT DIABLO BASE AND MERIDIAN CITY OF STOCKTON, SAN JOAQUIN COUNTY, CALIFORNIA JULY, 2021

SEE SHEET 4

SEE SHEET 6

- NOTES:
- 1. ALL BEARINGS AND DISTANCES SHOWN HEREON ARE MEASURED UNLESS OTHERWISE NOTED.
 - 2. ALL DISTANCES AND DIMENSIONS SHOWN ARE IN FEET AND DECIMAL PARTS THEREOF.
 - 3. ALL RECORD INFORMATION SHOWN IS FROM SAN JOAQUIN COUNTY RECORDS, UNLESS OTHERWISE SHOWN.

- LEGEND:
- FOUND AND ACCEPTED MONUMENT PER (R1) AND OR (R2)
 - ⊙ FOUND AND ACCEPTED MONUMENT IN MONUMENT WELL PER (R1) AND OR (R2)
 - SET 3/4" x 30" LONG IRON PIPE TAGGED L.S. 8225
- S.J.C.R. SAN JOAQUIN COUNTY RECORDS
- M.&P. MAPS AND PLATS
- (M) MEASURED
- (R) RADIAL BEARING
- EXISTING RESTRICTED ACCESS PER (R1)

- REFERENCES:
- (R1) WESTLAKE VILLAGES, UNIT NO. 1, LARGE LOT FINAL MAP 40-M&P-57
 - (R2) WESTLAKE VILLAGES, UNIT NO. 12 - VILLAGE F FINAL MAP 43-M&P-101

TRACT NO. 4106

SUBDIVISIONS OF SAN JOAQUIN COUNTY

WESTLAKE VILLAGES, UNIT 1A

BEING A SUBDIVISION OF LOTS 10, 21, 22, 23, 24, 25, AND 32 AND PORTIONS OF SCOTT CREEK DRIVE AND WESTLAKE DRIVE, AS SHOWN ON WESTLAKE VILLAGES, UNIT NO. 1, FILED IN BOOK 40 OF MAPS AND PLATS, AT PAGE 57, AND LOT C AS SHOWN ON WESTLAKE VILLAGES, UNIT NO. 12 - VILLAGE F, FILED IN BOOK 43 OF MAPS AND PLATS, AT PAGE 101, ALL OF SAN JOAQUIN COUNTY RECORDS, LYING IN SECTIONS 2 & 3, TOWNSHIP 2 NORTH, RANGE 5 EAST, MOUNT DIABLO BASE AND MERIDIAN

CITY OF STOCKTON, SAN JOAQUIN COUNTY, CALIFORNIA

JULY, 2021

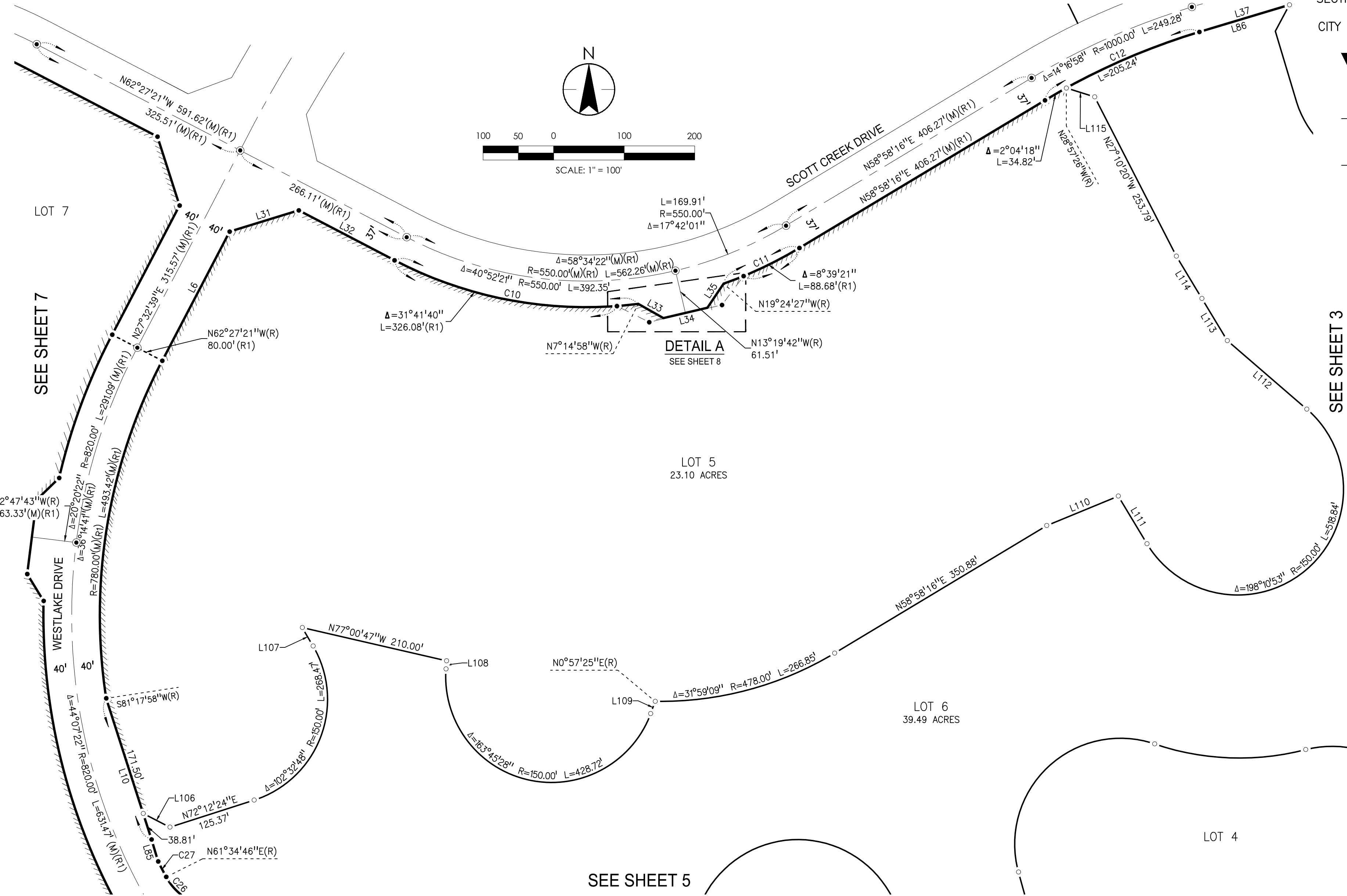
W&H

CONSULTING ENGINEERS

430 10th Street
Modesto, CA 95354
Tel: 209.568.4477 Fax: 209.568.4478

CURVE DATA TABLE				
CURVE	DELTA	RADIUS	LENGTH	
C10	34°47'37"	587.00'	356.46'	(M)
C11	11°37'17"	587.00'	119.06'	(M)
C12	14°16'58"	963.00'	240.06'	(M)(R1)
C26	47°15'06"	81.00'	66.80'	(M)(R1)
C27	1°48'46"	780.00'	24.68'	(M)(R1)

LINE DATA TABLE		
LINE	BEARING	DISTANCE
L6	S27°32'39"W	206.57' (M)(R1)
L10	S17°47'36"E	210.31' (M)(R1)
L31	S72°56'21"W	102.53' (M)(R1)
L32	N62°27'21"W	153.11' (M)(R1)
L33	N60°39'04"W	41.03' (M)
L34	S76°40'18"W	64.00' (M)
L35	S33°59'40"W	41.03' (M)
L37	S73°15'14"W	277.28' (M)(R1)
L85	S16°45'10"E	32.49' (M)(R1)
L86	S73°15'14"W	133.28' (M)
L106	S62°47'36"E	42.43'
L107	N30°20'25"W	30.32'
L108	S4°10'24"W	11.56'
L109	N20°24'56"E	18.49'
L110	N67°35'01"E	109.72'
L111	S31°01'44"E	78.89'
L112	N49°12'37"W	148.78'
L113	N31°05'16"W	69.83'
L114	N31°01'44"W	70.00'
L115	N72°37'06"W	42.09'



LEGEND:

- FOUND AND ACCEPTED MONUMENT PER (R1) AND OR (R2)
- ⊙ FOUND AND ACCEPTED MONUMENT IN MONUMENT WELL PER (R1) AND OR (R2)
- SET 3/4" x 30" LONG IRON PIPE TAGGED L.S. 8225
- S.J.C.R. SAN JOAQUIN COUNTY RECORDS
- M.&P. MAPS AND PLATS
- (M) MEASURED
- (R) RADIAL BEARING
- ////// EXISTING RESTRICTED ACCESS PER (R1)

NOTES:

1. ALL BEARINGS AND DISTANCES SHOWN HEREON ARE MEASURED UNLESS OTHERWISE NOTED.
2. ALL DISTANCES AND DIMENSIONS SHOWN ARE IN FEET AND DECIMAL PARTS THEREOF.
3. ALL RECORD INFORMATION SHOWN IS FROM SAN JOAQUIN COUNTY RECORDS, UNLESS OTHERWISE SHOWN.

REFERENCES:

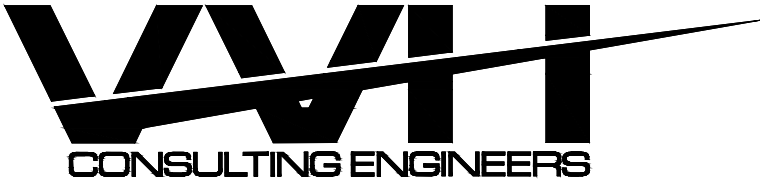
- (R1) WESTLAKE VILLAGES, UNIT NO. 1, LARGE LOT FINAL MAP 40-M&P-57
- (R2) WESTLAKE VILLAGES, UNIT NO. 12 - VILLAGE F FINAL MAP 43-M&P-101

TRACT NO. 4106

SUBDIVISIONS OF SAN JOAQUIN COUNTY

WESTLAKE VILLAGES, UNIT 1A

BEING A SUBDIVISION OF LOTS 10, 21, 22, 23, 24, 25, AND 32 AND PORTIONS OF SCOTT CREEK DRIVE AND WESTLAKE DRIVE, AS SHOWN ON WESTLAKE VILLAGES, UNIT NO. 1, FILED IN BOOK 40 OF MAPS AND PLATS, AT PAGE 57, AND LOT C AS SHOWN ON WESTLAKE VILLAGES, UNIT NO. 12 - VILLAGE F, FILED IN BOOK 43 OF MAPS AND PLATS, AT PAGE 101, ALL OF SAN JOAQUIN COUNTY RECORDS, LYING IN SECTIONS 2 & 3, TOWNSHIP 2 NORTH, RANGE 5 EAST, MOUNT DIABLO BASE AND MERIDIAN
CITY OF STOCKTON, SAN JOAQUIN COUNTY, CALIFORNIA
JULY, 2021

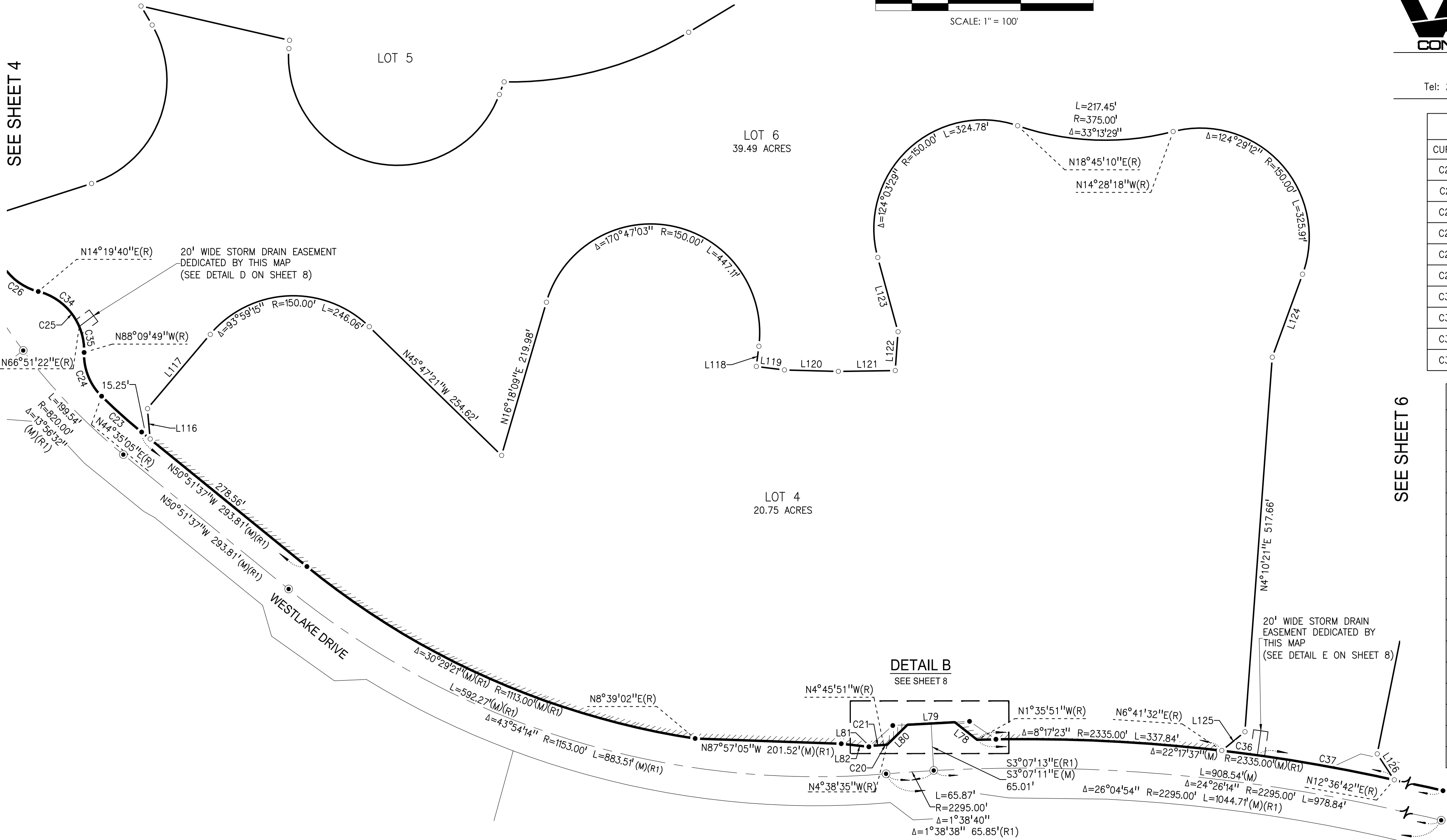
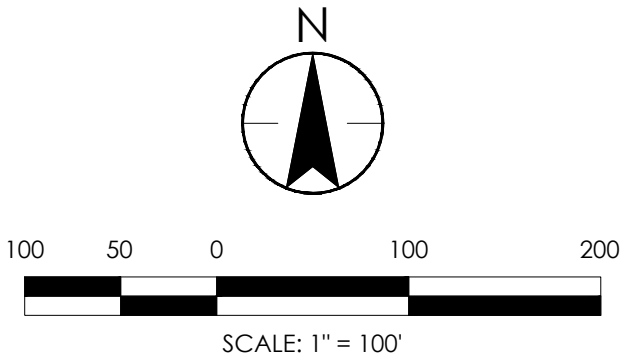


430 10th Street
Modesto, CA 95354
Tel: 209.568.4477 Fax: 209.568.4478

CURVE DATA TABLE			
CURVE	DELTA	RADIUS	LENGTH
C20	0°07'16"	2335.00'	4.94' (M)
C21	0°59'05"	1113.00'	19.13' (M)
C23	5°26'42"	780.00'	74.13' (M)(R1)
C24	47°15'06"	81.00'	66.80' (M)(R1)
C25	77°30'31"	84.00'	113.63' (M)(R1)
C26	47°15'06"	81.00'	66.80' (M)(R1)
C34	52°31'42"	84.00'	77.01'
C35	24°58'49"	84.00'	36.62'
C36	1°12'54"	2335.00'	49.51'
C37	4°42'16"	2335.00'	191.72'

LINE DATA TABLE		
LINE	BEARING	DISTANCE
L78	N51°46'11"W	39.08' (M)
L79	S86°54'42"W	65.39' (M)
L80	S45°31'45"W	39.13' (M)
L81	S48°20'15"W	1.75' (M)
L82	S83°42'03"E	38.30' (M)(R1)
L116	N5°11'07"W	42.12'
L117	S40°13'24"W	134.01'
L118	S7°05'12"W	28.07'
L119	N82°54'48"W	38.98'
L120	N88°30'09"W	74.43'
L121	N89°14'32"E	78.41'
L122	S4°10'21"W	53.62'
L123	N15°18'19"W	106.21'
L124	N20°00'54"E	121.99'
L125	N50°53'34"E	41.13'
L126	S33°12'26"E	42.76'

SEE SHEET 4



LEGEND:

- FOUND AND ACCEPTED MONUMENT PER (R1) AND OR (R2)
 - ◉ FOUND AND ACCEPTED MONUMENT IN MONUMENT WELL PER (R1) AND OR (R2)
 - SET 3/4" x 30" LONG IRON PIPE TAGGED L.S. 8225
- S.J.C.R. SAN JOAQUIN COUNTY RECORDS
- M.&P. MAPS AND PLATS
- (M) MEASURED
- (R) RADIAL BEARING

EXISTING RESTRICTED ACCESS PER (R1)

LINE DATA TABLE			
LINE	BEARING	DISTANCE	
L65	S8°12'42"E	99.50'	(M)(R1)
L67	N38°20'40"E	48.13'	(M)(R1)
L70	N28°37'59"W	39.16'	(M)
L71	N69°37'39"W	64.01'	(M)
L72	N70°24'11"E	39.70'	(M)
L73	S68°40'57"E	24.12'	(M)
L74	S73°11'13"W	2.39'	(M)
L75	N59°13'13"W	39.38'	(M)
L76	N68°40'57"W	101.31'	(M)(R1)
L77	N73°25'08"W	62.22'	(M)(R1)
L101	N57°36'21"E	83.00'	

LINE DATA TABLE			LINE DATA TABLE			LINE DATA TABLE		
LINE	BEARING	DISTANCE	LINE	BEARING	DISTANCE	LINE	BEARING	DISTANCE
L102	N12°36'21"E	42.43'	L133	S21°05'15"E	90.00'	L144	S19°20'14"E	46.16'
L103	S32°23'39"E	279.87'	L134	S32°12'46"E	99.90'	L145	S57°36'21"W	126.04'
L104	S32°23'39"E	262.20'	L135	N11°36'19"W	121.52'	L146	N32°23'39"W	104.26'
L105	N77°23'39"W	42.43'	L136	N21°05'15"W	140.38'	L147	N4°08'30"E	104.88'
L126	S33°12'26"E	42.76'	L137	N16°00'33"W	49.38'	L148	S4°12'24"W	146.08'
L127	N76°44'19"W	59.64'	L138	N11°44'52"W	14.33'	L149	N86°13'34"W	8.55'
L128	N78°46'57"W	59.64'	L139	S85°04'41"W	56.67'	L150	N4°27'43"E	146.00'
L129	N80°49'36"W	59.64'	L140	S83°49'25"W	49.80'	L151	S4°03'49"W	100.00'
L130	N82°52'14"W	59.64'	L141	S82°38'59"W	49.80'			
L131	N84°54'52"W	59.64'	L142	S81°28'34"W	49.80'			
L132	S20°09'05"E	40.35'	L143	S70°37'53"W	50.60'			

NOTES:

- ALL BEARINGS AND DISTANCES SHOWN HEREON ARE MEASURED UNLESS OTHERWISE NOTED.
- ALL DISTANCES AND DIMENSIONS SHOWN ARE IN FEET AND DECIMAL PARTS THEREOF.
- ALL RECORD INFORMATION SHOWN IS FROM SAN JOAQUIN COUNTY RECORDS, UNLESS OTHERWISE SHOWN.

REFERENCES:

- (R1) WESTLAKE VILLAGES, UNIT NO. 1, LARGE LOT FINAL MAP 40-M&P-57
- (R2) WESTLAKE VILLAGES, UNIT NO. 12 - VILLAGE F FINAL MAP 43-M&P-101

TRACT NO. 4106

SUBDIVISIONS OF SAN JOAQUIN COUNTY

WESTLAKE VILLAGES, UNIT 1A

BEING A SUBDIVISION OF LOTS 10, 21, 22, 23, 24, 25, AND 32 AND PORTIONS OF SCOTT CREEK DRIVE AND WESTLAKE DRIVE, AS SHOWN ON WESTLAKE VILLAGES, UNIT NO. 1, FILED IN BOOK 40 OF MAPS AND PLATS, AT PAGE 57, AND LOT C AS SHOWN ON WESTLAKE VILLAGES, UNIT NO. 12 - VILLAGE F, FILED IN BOOK 43 OF MAPS AND PLATS, AT PAGE 101, ALL OF SAN JOAQUIN COUNTY RECORDS, LYING IN SECTIONS 2 & 3, TOWNSHIP 2 NORTH, RANGE 5 EAST, MOUNT DIABLO BASE AND MERIDIAN CITY OF STOCKTON, SAN JOAQUIN COUNTY, CALIFORNIA JULY, 2021

W&H
CONSULTING ENGINEERS

430 10th Street
Modesto, CA 95354
Tel: 209.568.4477 Fax: 209.568.4478

SEE SHEET 3

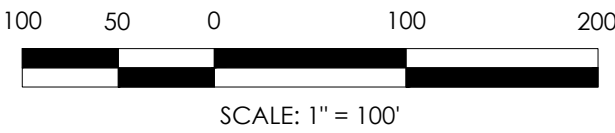
LOT 6
39.49 ACRES

LOT 3
17.47 ACRES

LOT 2
15.04 ACRES

CURVE DATA TABLE			
CURVE	DELTA	RADIUS	LENGTH
C18	12°50'19"	1000.00'	224.08' (M)(R1)
C19	5°11'18"	1760.00'	159.38' (M)
C38	0°23'54"	1772.00'	12.32'
C39	0°03'54"	2064.00'	2.34'

SEE SHEET 5



DETAIL F
NOT TO SCALE

DETAIL F
SEE THIS SHEET

DETAIL C
SEE SHEET 8

LEGEND:

- FOUND AND ACCEPTED MONUMENT PER (R1) AND OR (R2)
- ⊙ FOUND AND ACCEPTED MONUMENT IN MONUMENT WELL PER (R1) AND OR (R2)
- SET 3/4" x 30" LONG IRON PIPE TAGGED L.S. 8225

S.J.C.R. SAN JOAQUIN COUNTY RECORDS

M.&P. MAPS AND PLATS

(M) MEASURED

(R) RADIAL BEARING

EXISTING RESTRICTED ACCESS PER (R1)

NOTES:

1. ALL BEARINGS AND DISTANCES SHOWN HEREON ARE MEASURED UNLESS OTHERWISE NOTED.
2. ALL DISTANCES AND DIMENSIONS SHOWN ARE IN FEET AND DECIMAL PARTS THEREOF.
3. ALL RECORD INFORMATION SHOWN IS FROM SAN JOAQUIN COUNTY RECORDS, UNLESS OTHERWISE SHOWN.

REFERENCES:

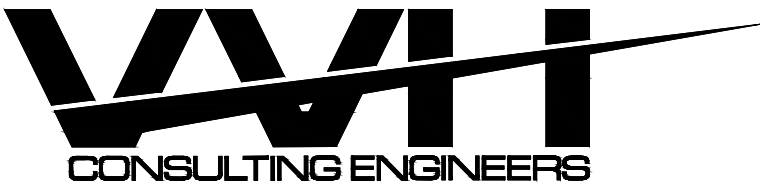
- (R1) WESTLAKE VILLAGES, UNIT NO. 1, LARGE LOT FINAL MAP 40-M&P-57
- (R2) WESTLAKE VILLAGES, UNIT NO. 12 - VILLAGE F FINAL MAP 43-M&P-101

TRACT NO. 4106

SUBDIVISIONS OF SAN JOAQUIN COUNTY

WESTLAKE VILLAGES, UNIT 1A

BEING A SUBDIVISION OF LOTS 10, 21, 22, 23, 24, 25, AND 32 AND PORTIONS OF SCOTT CREEK DRIVE AND WESTLAKE DRIVE, AS SHOWN ON WESTLAKE VILLAGES, UNIT NO. 1, FILED IN BOOK 40 OF MAPS AND PLATS, AT PAGE 57, AND LOT C AS SHOWN ON WESTLAKE VILLAGES, UNIT NO. 12 - VILLAGE F, FILED IN BOOK 43 OF MAPS AND PLATS, AT PAGE 101, ALL OF SAN JOAQUIN COUNTY RECORDS, LYING IN SECTIONS 2 & 3, TOWNSHIP 2 NORTH, RANGE 5 EAST, MOUNT DIABLO BASE AND MERIDIAN CITY OF STOCKTON, SAN JOAQUIN COUNTY, CALIFORNIA JULY, 2021

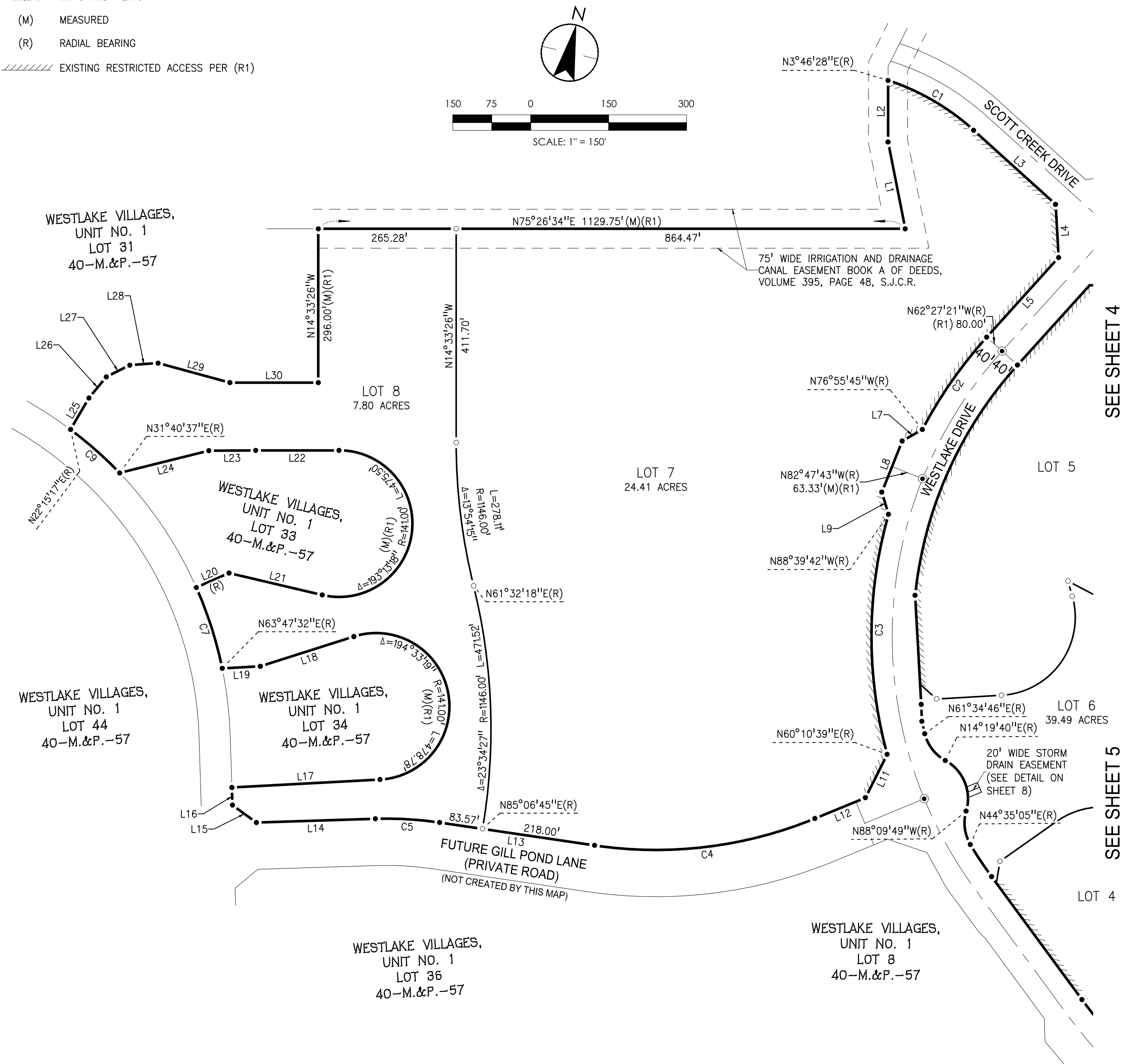


430 10th Street
Modesto, CA 95354
Tel: 209.568.4477 Fax: 209.568.4478

CURVE DATA TABLE				
CURVE	DELTA	RADIUS	LENGTH	
C1	23°46'11"	463.00'	192.08'	(M)(R1)
C2	14°28'24"	860.00'	217.24'	(M)(R1)
C3	31°09'39"	860.00'	467.72'	(M)(R1)
C4	30°46'30"	805.00'	432.39'	(M)(R1)
C5	10°13'39"	695.00'	124.06'	(M)(R1)
C7	12°12'49"	768.00'	163.71'	(M)(R1)
C9	9°25'20"	768.00'	126.30'	(M)(R1)

LINE DATA TABLE		
LINE	BEARING	DISTANCE
L1	S25°44'26"E	170.50'
L2	S14°31'26"E	118.30'
L3	N62°27'21"W	212.51'
L4	N17°51'04"W	102.53'
L5	N27°32'39"E	206.57'
L7	N45°46'35"E	44.64'
L8	N7°12'17"E	106.00'
L9	N31°22'01"W	44.64'
L11	S12°05'23"W	93.34'
L12	N53°04'55"E	105.24'
L13	N83°51'26"E	301.57'
L14	N73°37'46"E	229.13'
L15	S68°29'44"E	57.01'
L16	N16°22'14"W	33.91'

LINE DATA TABLE		
LINE	BEARING	DISTANCE
L17	N72°21'18"E	285.50'
L18	N57°47'59"E	188.91'
L19	N72°21'18"E	73.40'
L20	S51°34'43"W	68.80'
L21	N88°39'52"E	184.28'
L22	S75°26'34"W	160.31'
L23	S75°06'25"W	90.32'
L24	S61°24'41"W	176.93'
L25	S15°36'32"W	70.16'
L26	N24°57'34"E	52.64'
L27	N48°57'19"E	50.53'
L28	N71°15'05"E	54.59'
L29	N89°23'17"W	143.31'
L30	S75°26'34"W	170.20'



NOTES:

1. ALL BEARINGS AND DISTANCES SHOWN HEREON ARE MEASURED UNLESS OTHERWISE NOTED.
2. ALL DISTANCES AND DIMENSIONS SHOWN ARE IN FEET AND DECIMAL PARTS THEREOF.
3. ALL RECORD INFORMATION SHOWN IS FROM SAN JOAQUIN COUNTY RECORDS, UNLESS OTHERWISE SHOWN.

REFERENCES:

- (R1) WESTLAKE VILLAGES, UNIT NO. 1, LARGE LOT FINAL MAP 40-M&P-57
(R2) WESTLAKE VILLAGES, UNIT NO. 12 - VILLAGE F FINAL MAP 43-M&P-101

LEGEND:

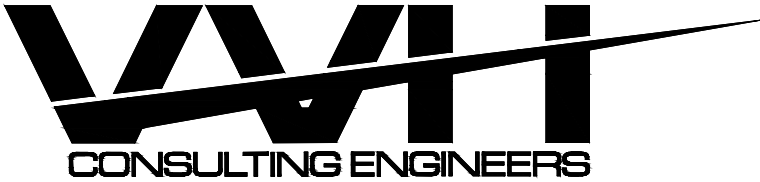
- FOUND AND ACCEPTED MONUMENT PER (R1) AND OR (R2)
- ◉ FOUND AND ACCEPTED MONUMENT IN MONUMENT WELL PER (R1) AND OR (R2)
- SET 3/4" x 30" LONG IRON PIPE TAGGED L.S. 8225
- S.J.C.R. SAN JOAQUIN COUNTY RECORDS
- M.&P. MAPS AND PLATS
- (M) MEASURED
- (R) RADIAL BEARING
- EXISTING RESTRICTED ACCESS PER (R1)

TRACT NO. 4106

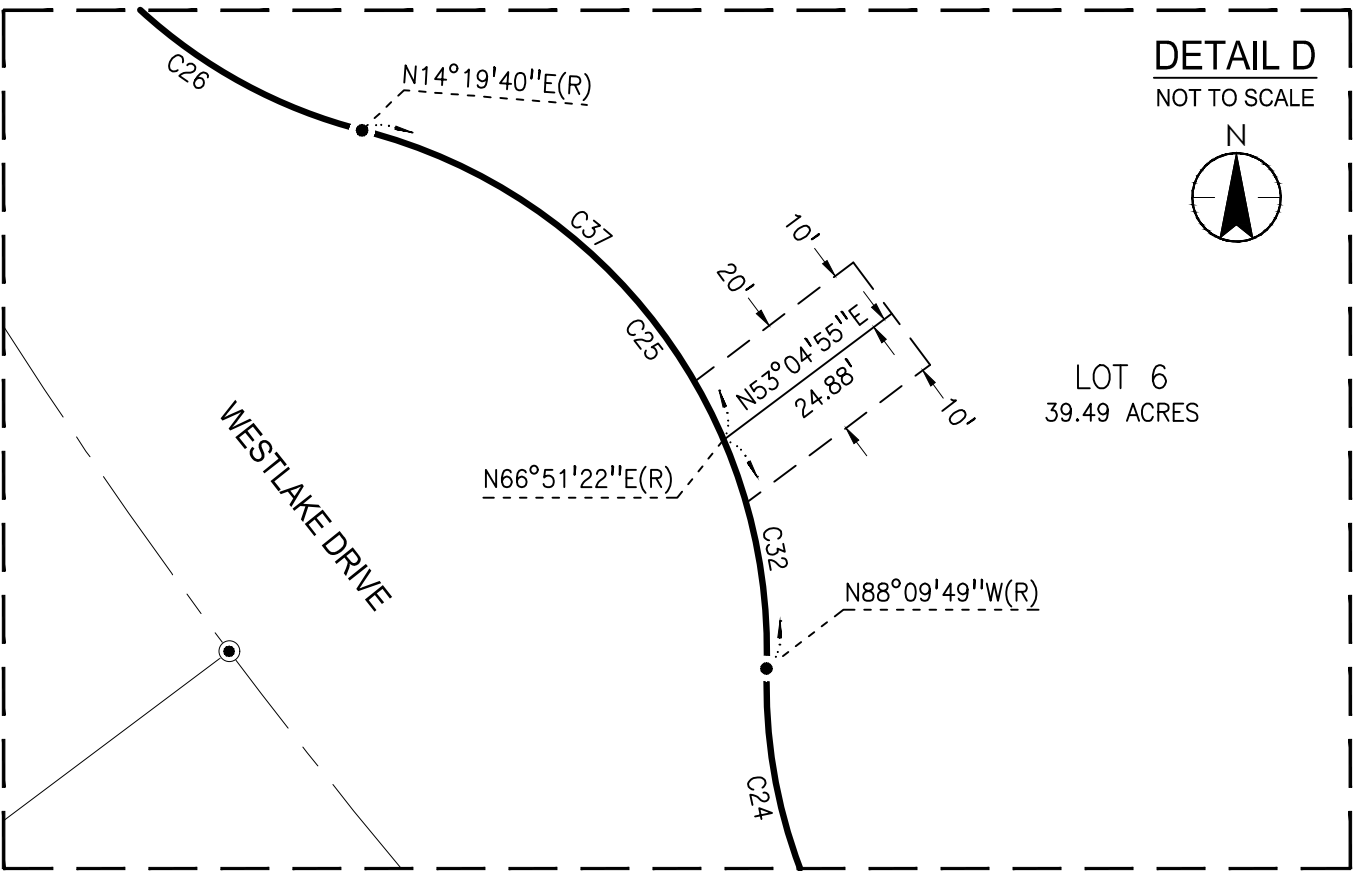
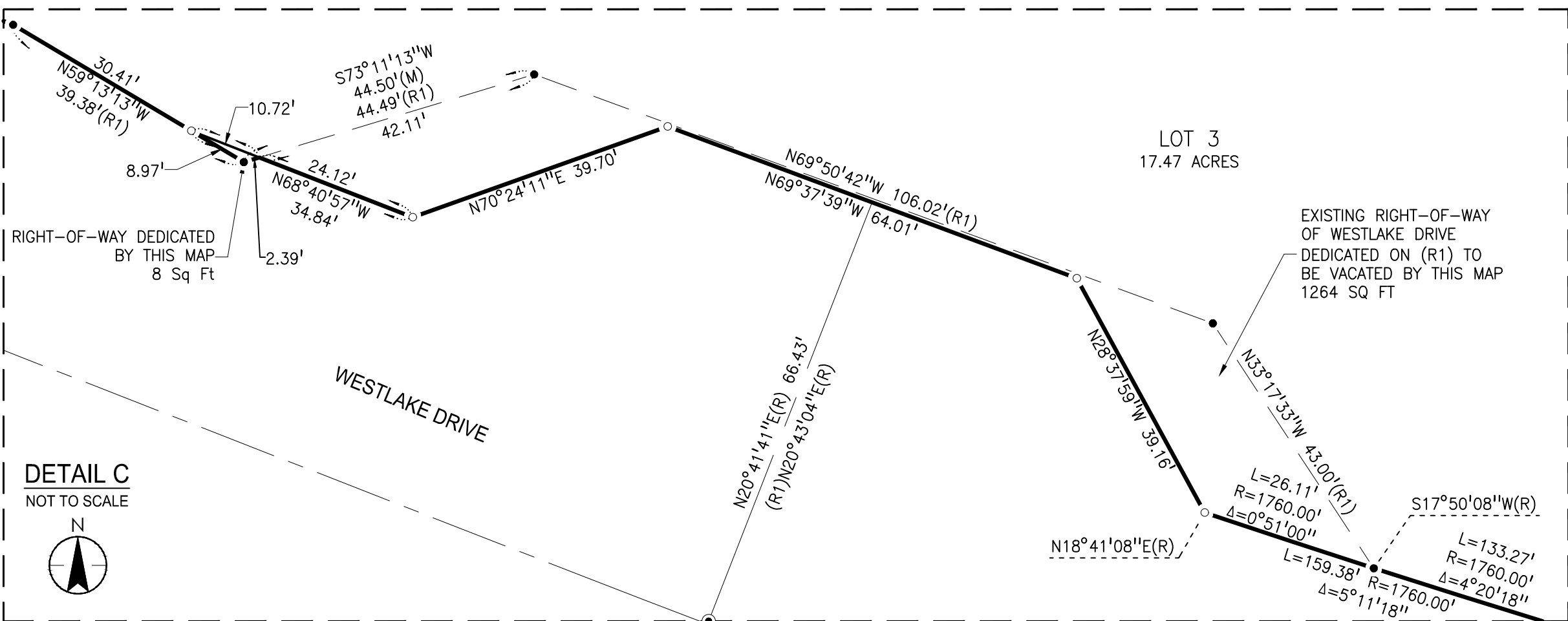
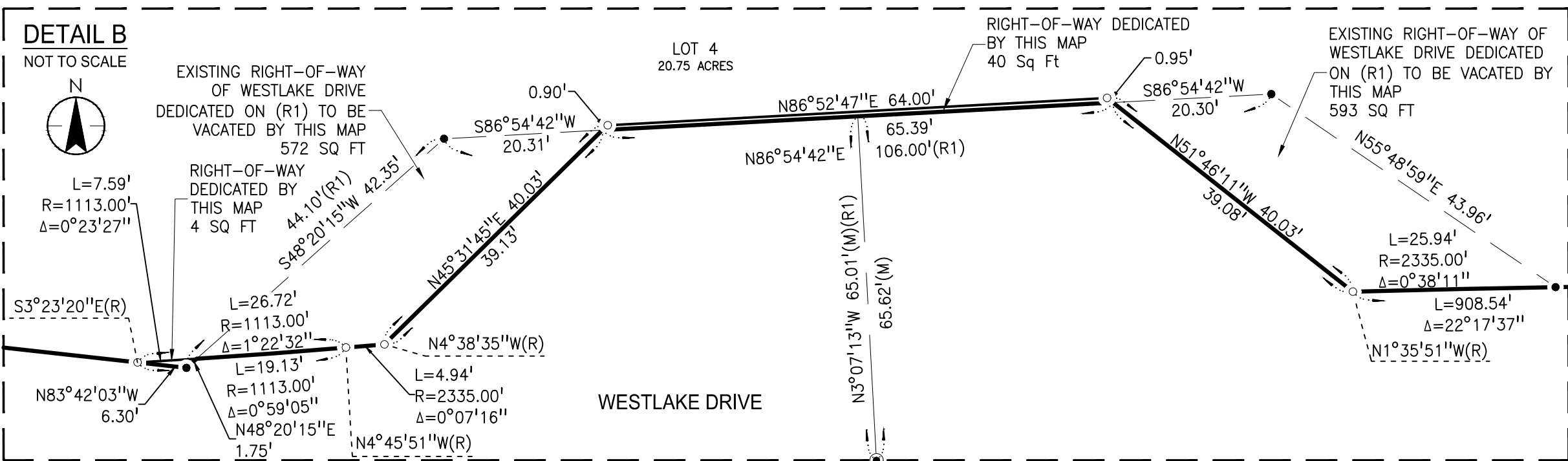
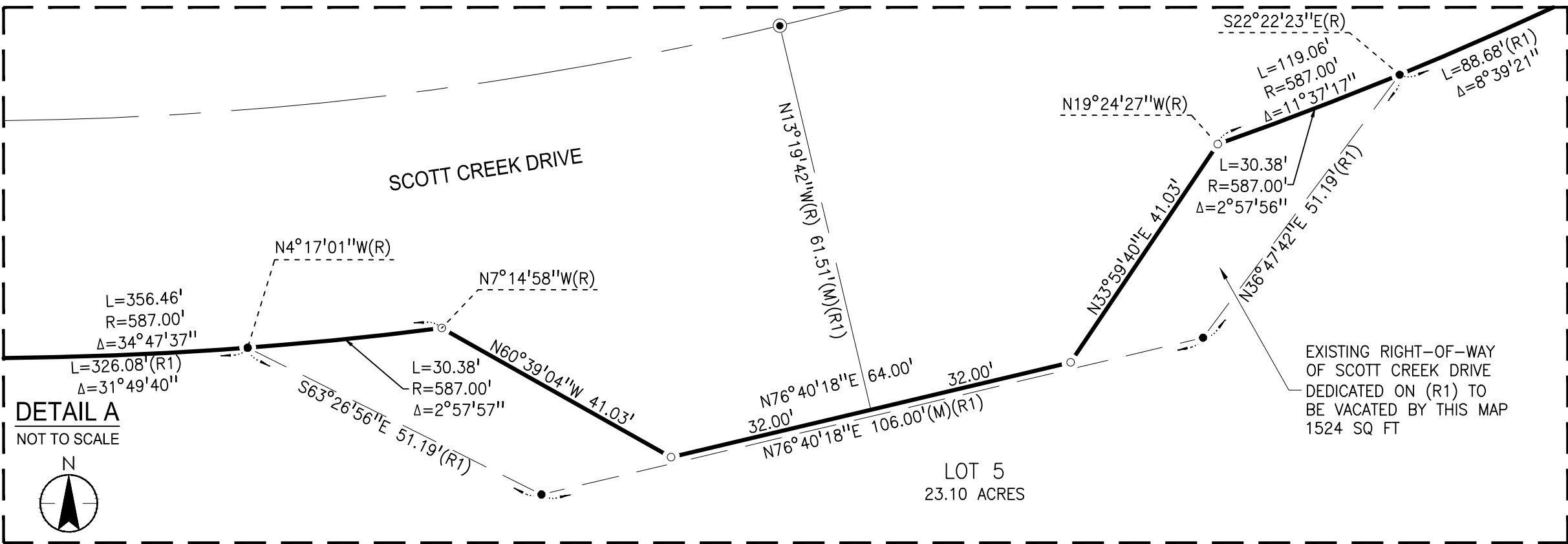
SUBDIVISIONS OF SAN JOAQUIN COUNTY

WESTLAKE VILLAGES, UNIT 1A

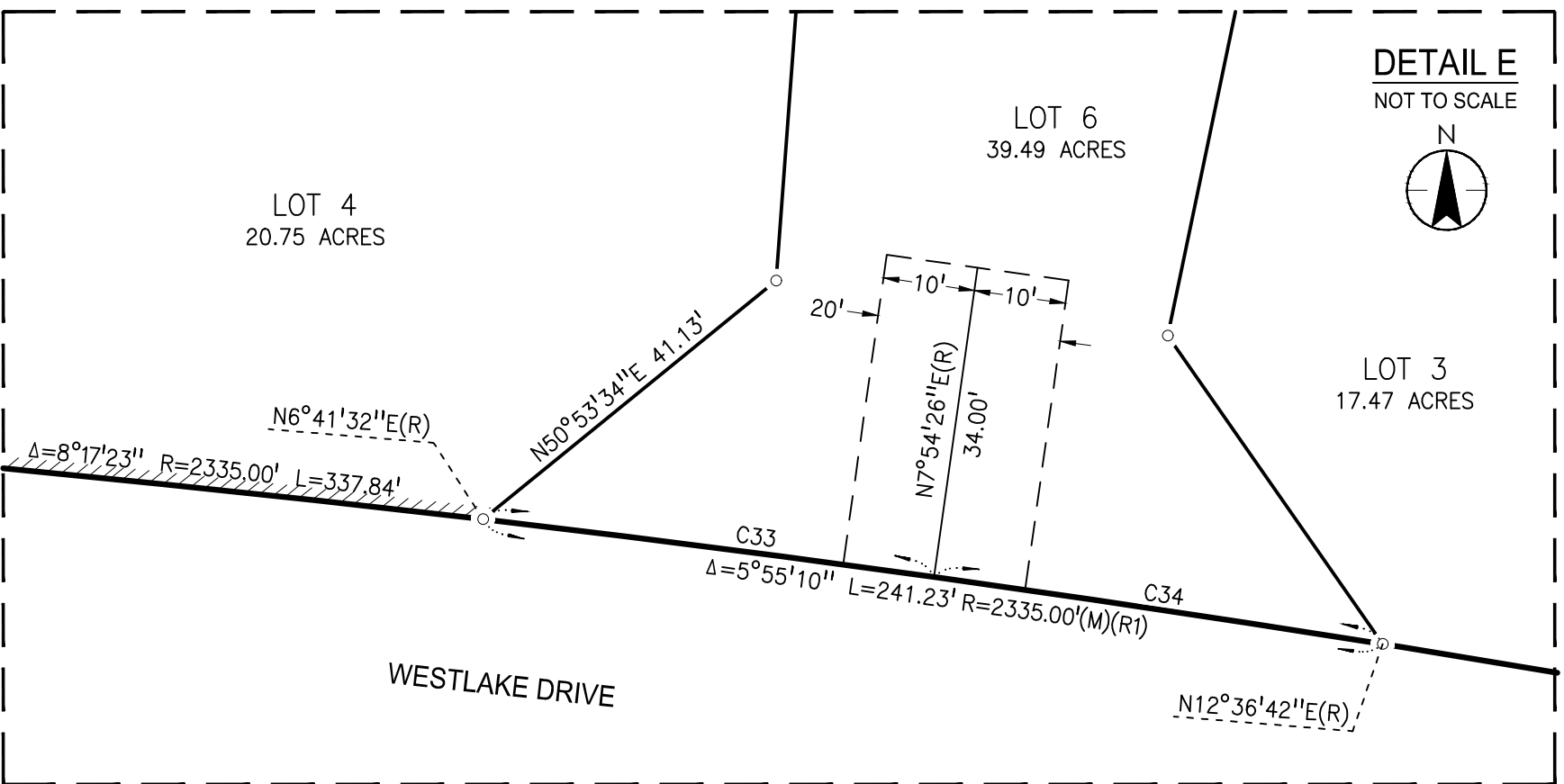
BEING A SUBDIVISION OF LOTS 10, 21, 22, 23, 24, 25, AND 32 AND PORTIONS OF SCOTT CREEK DRIVE AND WESTLAKE DRIVE, AS SHOWN ON WESTLAKE VILLAGES, UNIT NO. 1, FILED IN BOOK 40 OF MAPS AND PLATS, AT PAGE 57, AND LOT C AS SHOWN ON WESTLAKE VILLAGES, UNIT NO. 12 - VILLAGE F, FILED IN BOOK 43 OF MAPS AND PLATS, AT PAGE 101, ALL OF SAN JOAQUIN COUNTY RECORDS, LYING IN SECTIONS 2 & 3, TOWNSHIP 2 NORTH, RANGE 5 EAST, MOUNT DIABLO BASE AND MERIDIAN
CITY OF STOCKTON, SAN JOAQUIN COUNTY, CALIFORNIA
JULY, 2021



430 10th Street
Modesto, CA 95354
Tel: 209.568.4477 Fax: 209.568.4478



CURVE DATA TABLE			
CURVE	DELTA	RADIUS	LENGTH
C24	47°15'06"	81.00'	66.80'
C25	77°30'31"	84.00'	113.63'
C26	47°15'06"	81.00'	66.80'
C32	24°58'49"	84.00'	36.62'
C33	1°12'54"	2335.00'	49.51'
C34	4°42'16"	2335.00'	191.72'
C37	52°31'42"	84.00'	77.01'



NOTARY STATEMENT:

A NOTARY PUBLIC OR OTHER OFFICER COMPLETING THIS CERTIFICATE VERIFIES ONLY THE IDENTITY OF THE INDIVIDUAL WHO SIGNED THE DOCUMENT TO WHICH THIS CERTIFICATE IS ATTACHED, AND NOT THE TRUTHFULNESS, ACCURACY, OR VALIDITY OF THAT DOCUMENT.

STATE OF CALIFORNIA }
COUNTY OF San Joaquin }
ON July 19, 2021, BEFORE ME, Sonia Lopez
A NOTARY PUBLIC, PERSONALLY APPEARED Michael A. Spans

WHO PROVED TO ME ON THE BASIS OF SATISFACTORY EVIDENCE TO BE THE PERSON(S) WHOSE NAME(S) IS/ARE SUBSCRIBED TO THE WITHIN INSTRUMENT, AND ACKNOWLEDGED TO ME THAT HE/SHE/THEY EXECUTED THE SAME IN HIS/HER/THEIR AUTHORIZED CAPACITY(IES), AND THAT BY HIS/HER/THEIR SIGNATURE(S) ON THE INSTRUMENT THE PERSON(S), OR THE ENTITY UPON BEHALF OF WHICH THE PERSON(S) ACTED, EXECUTED THE INSTRUMENT.

I CERTIFY UNDER PENALTY OF PERJURY UNDER THE LAWS OF THE STATE OF CALIFORNIA THAT THE FOREGOING PARAGRAPH IS TRUE AND CORRECT.

WITNESS MY HAND
SIGNATURE: [Signature] COMMISSION NUMBER: 2351504
PRINCIPAL COUNTY OF BUSINESS: San Joaquin MY COMMISSION EXPIRES: April 11, 2025

NOTARY STATEMENT:

A NOTARY PUBLIC OR OTHER OFFICER COMPLETING THIS CERTIFICATE VERIFIES ONLY THE IDENTITY OF THE INDIVIDUAL WHO SIGNED THE DOCUMENT TO WHICH THIS CERTIFICATE IS ATTACHED, AND NOT THE TRUTHFULNESS, ACCURACY, OR VALIDITY OF THAT DOCUMENT.

STATE OF CALIFORNIA } S.S.
COUNTY OF San Joaquin }
ON July 20, 2021, BEFORE ME, Cindy Freitas
A NOTARY PUBLIC, PERSONALLY APPEARED George K. Gibson

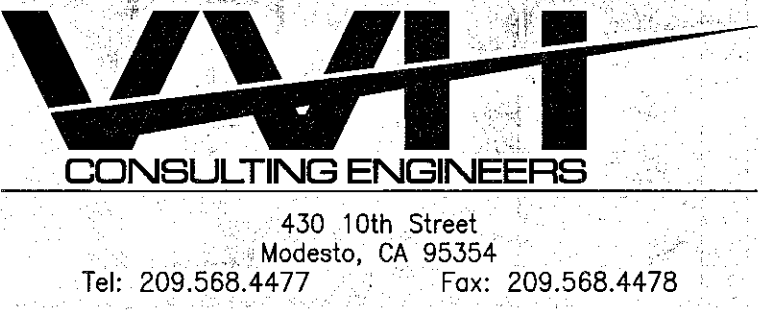
WHO PROVED TO ME ON THE BASIS OF SATISFACTORY EVIDENCE TO BE THE PERSON(S) WHOSE NAME(S) IS/ARE SUBSCRIBED TO THE WITHIN INSTRUMENT, AND ACKNOWLEDGED TO ME THAT HE/SHE/THEY EXECUTED THE SAME IN HIS/HER/THEIR AUTHORIZED CAPACITY(IES), AND THAT BY HIS/HER/THEIR SIGNATURE(S) ON THE INSTRUMENT THE PERSON(S), OR THE ENTITY UPON BEHALF OF WHICH THE PERSON(S) ACTED, EXECUTED THE INSTRUMENT.

I CERTIFY UNDER PENALTY OF PERJURY UNDER THE LAWS OF THE STATE OF CALIFORNIA THAT THE FOREGOING PARAGRAPH IS TRUE AND CORRECT.

WITNESS MY HAND
SIGNATURE: Cindy Freitas COMMISSION NUMBER: 2272650
PRINCIPAL COUNTY OF BUSINESS: San Joaquin MY COMMISSION EXPIRES: Jan. 17, 2023

TRACT NO. 4106
SUBDIVISIONS OF SAN JOAQUIN COUNTY
WESTLAKE VILLAGES, UNIT 1A

BEING A SUBDIVISION OF LOTS 10, 21, 22, 23, 24, 25, AND 32 AND PORTIONS OF SCOTT CREEK DRIVE AND WESTLAKE DRIVE, AS SHOWN ON WESTLAKE VILLAGES, UNIT NO. 1, FILED IN BOOK 40 OF MAPS AND PLATS, AT PAGE 57, AND LOT C AS SHOWN ON WESTLAKE VILLAGES, UNIT NO. 12 - VILLAGE F, FILED IN BOOK 43 OF MAPS AND PLATS, AT PAGE 101, ALL OF SAN JOAQUIN COUNTY RECORDS, LYING IN SECTIONS 2 & 3, TOWNSHIP 2 NORTH, RANGE 5 EAST, MOUNT DIABLO BASE AND MERIDIAN CITY OF STOCKTON, SAN JOAQUIN COUNTY, CALIFORNIA
JULY, 2021



NOTARY STATEMENT:

A NOTARY PUBLIC OR OTHER OFFICER COMPLETING THIS CERTIFICATE VERIFIES ONLY THE IDENTITY OF THE INDIVIDUAL WHO SIGNED THE DOCUMENT TO WHICH THIS CERTIFICATE IS ATTACHED, AND NOT THE TRUTHFULNESS, ACCURACY, OR VALIDITY OF THAT DOCUMENT.

STATE OF CALIFORNIA }
COUNTY OF Alameda }
ON July 26, 2021, BEFORE ME, Terri Lynn Kane Llorente
A NOTARY PUBLIC, PERSONALLY APPEARED Derek C. Wiles

WHO PROVED TO ME ON THE BASIS OF SATISFACTORY EVIDENCE TO BE THE PERSON(S) WHOSE NAME(S) IS/ARE SUBSCRIBED TO THE WITHIN INSTRUMENT, AND ACKNOWLEDGED TO ME THAT HE/SHE/THEY EXECUTED THE SAME IN HIS/HER/THEIR AUTHORIZED CAPACITY(IES), AND THAT BY HIS/HER/THEIR SIGNATURE(S) ON THE INSTRUMENT THE PERSON(S), OR THE ENTITY UPON BEHALF OF WHICH THE PERSON(S) ACTED, EXECUTED THE INSTRUMENT.

I CERTIFY UNDER PENALTY OF PERJURY UNDER THE LAWS OF THE STATE OF CALIFORNIA THAT THE FOREGOING PARAGRAPH IS TRUE AND CORRECT.

WITNESS MY HAND
SIGNATURE: [Signature] COMMISSION NUMBER: 2345374
PRINCIPAL COUNTY OF BUSINESS: Alameda MY COMMISSION EXPIRES: Feb. 5, 2025

NOTARY STATEMENT:

A NOTARY PUBLIC OR OTHER OFFICER COMPLETING THIS CERTIFICATE VERIFIES ONLY THE IDENTITY OF THE INDIVIDUAL WHO SIGNED THE DOCUMENT TO WHICH THIS CERTIFICATE IS ATTACHED, AND NOT THE TRUTHFULNESS, ACCURACY, OR VALIDITY OF THAT DOCUMENT.

STATE OF CALIFORNIA } S.S.
COUNTY OF San Joaquin }
ON August 6, 2021, BEFORE ME, Karen A. Costa
A NOTARY PUBLIC, PERSONALLY APPEARED Harry Black

WHO PROVED TO ME ON THE BASIS OF SATISFACTORY EVIDENCE TO BE THE PERSON(S) WHOSE NAME(S) IS/ARE SUBSCRIBED TO THE WITHIN INSTRUMENT, AND ACKNOWLEDGED TO ME THAT HE/SHE/THEY EXECUTED THE SAME IN HIS/HER/THEIR AUTHORIZED CAPACITY(IES), AND THAT BY HIS/HER/THEIR SIGNATURE(S) ON THE INSTRUMENT THE PERSON(S), OR THE ENTITY UPON BEHALF OF WHICH THE PERSON(S) ACTED, EXECUTED THE INSTRUMENT.

I CERTIFY UNDER PENALTY OF PERJURY UNDER THE LAWS OF THE STATE OF CALIFORNIA THAT THE FOREGOING PARAGRAPH IS TRUE AND CORRECT.

WITNESS MY HAND
SIGNATURE: Karen A. Costa COMMISSION NUMBER: 2308776
PRINCIPAL COUNTY OF BUSINESS: San Joaquin MY COMMISSION EXPIRES: Nov. 10, 2023