

THIS DRAWING IS THE PROPERTY OF COLD STORAGE MFG. INC. AND SHALL NOT BE REPRODUCED, COPIED, LENT, OR DISPOSED OF DIRECTLY OR INDIRECTLY NOR USED FOR ANY PURPOSE OTHER THAN THAT FOR WHICH IT IS SPECIFICALLY FURNISHED.

THIS DRAWING IS COPYRIGHT PROTECTED BY COLD STORAGE MANUFACTURING INC.

NO.	REVISION	DATE BY
1	CITY PLAN CHECK RESPONSES	08/10/20 CSO
2	CITY PLAN CHECK RELOCATED PUMP HOUSE	01/27/21 CSO

COLD STORAGE MANUFACTURING INC.
SPECIALISTS IN LOW-TEMPERATURE CONSTRUCTION

LOCATIONS TO SERVE - (WWW.COLDSTORAGEMFG.COM):
740 BRADFORD WAY, UNION CITY, CA 94587 (510) 476-1700
1401 S. 7th ST., MODESTO, CA 95351 (209) 544-1690

CUSTOMER:

M&L COMMODITIES

PROJECT ADDRESS:
2005 West Washington St.
Stockton, CA

PROJECT:

TENANT
IMPROVEMENT

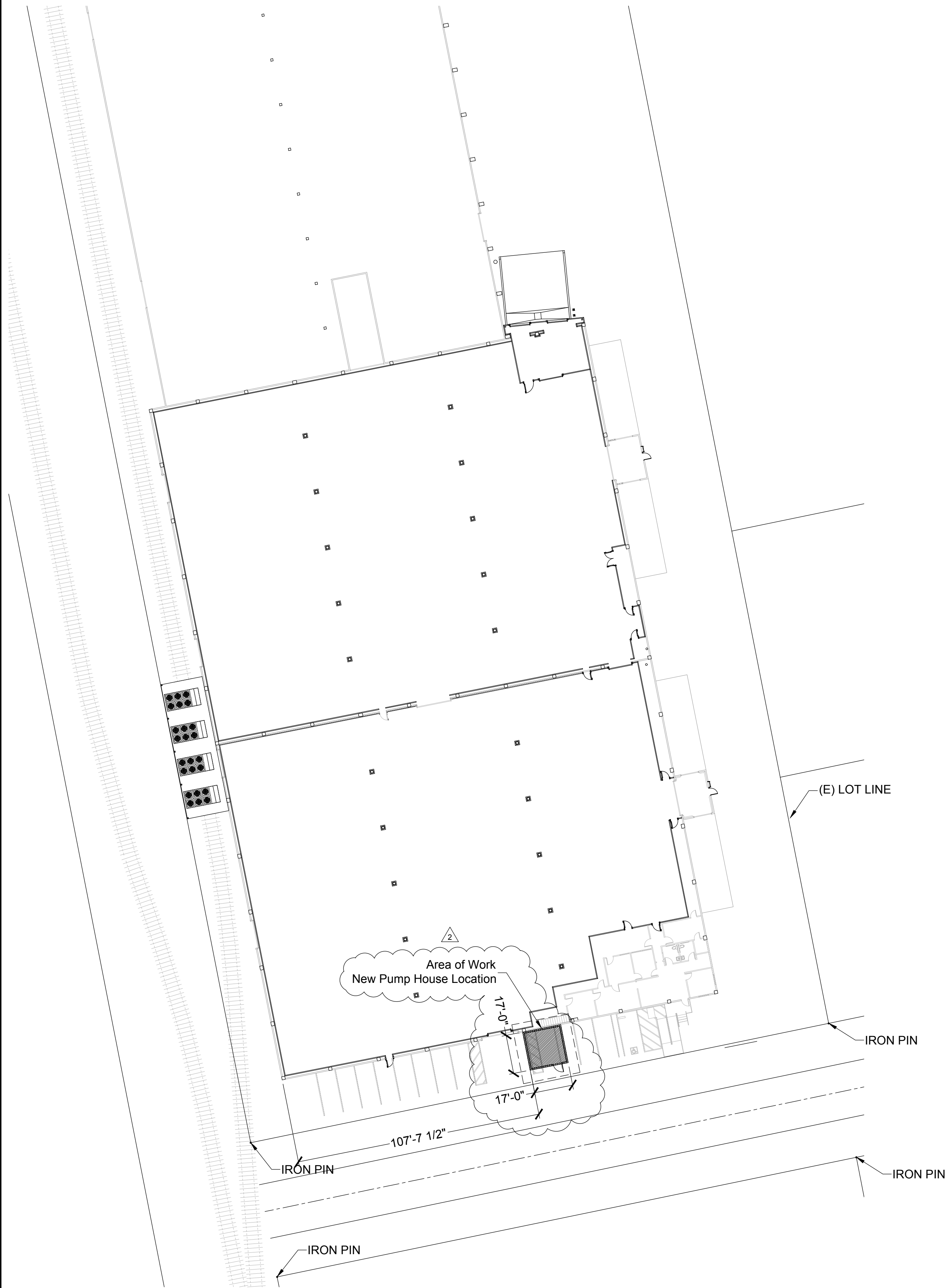
DESCRIPTION:

PUMP HOUSE
SITE PLAN

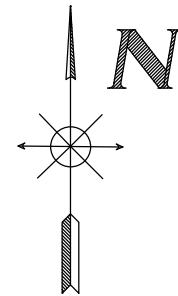
JOB NO.:	DRAWN:
	CSO
DATE:	CHECKED:
02/19/2020	JS
SCALE:	APPROVED:
1" = 20'-0"	JS

DRAWING NO.:

CS2.0



1 **PUMP HOUSE SITE PLAN**
CS2.0 **SCALE: 1" = 20'-0"**



BUILDING ENCLOSURE NOTES:
WALLS SHALL BE 2 HOUR FIRE RATED
WITH A METAL ROOF
DIMENSIONS: 15'-0" W x 20'-0" H
HEIGHT: 13'-2" HIGH SIDE x 9'-0" LOW SIDE

NOTE:
SURVEY MONUMENTS WILL BE PROTECTED
FROM DAMAGE OR REMOVAL DURING THE
DEVELOPMENT OF THE SITE.

