

VICINITY MAP  
NOT TO SCALE

LINE DATA TABLE

LINE	BEARING	DISTANCE
L1	N84°30'52"E	90.52'
L2	S0°39'31"W	63.05'
L3	S39°03'32"E	16.50'
L4	S5°45'39"W	45.25'
L5	N0°39'31"E	53.37'
L6	S66°21'06"E	43.33'
L7	S5°45'39"W	22.56'
L8	S79°44'33"W	100.08'
L9	S10°15'27"E	70.50'
L10	N0°39'31"E	91.01'

CURVE DATA TABLE

CURVE	DELTA	RADIUS	LENGTH	CH.BEARING	CHORD
C1	4°03'10"	2063.00'	145.92'	S2°41'06"W	145.89'
C2	65°19'48"	55.00'	62.71'	N55°16'21"E	59.37'
C3	163°09'13"	60.00'	170.85'	S75°48'57"E	118.71'
C4	4°03'10"	1973.00'	139.56'	N2°41'06"E	139.53'
C5	56°57'04"	60.00'	59.64'	S51°04'59"W	57.21'

## BASIS OF BEARINGS:

BASED ON THAT CERTAIN MAP ENTITLED "TRACT NO. 3357 OF WESTLAKE VILLAGES, UNIT NO. 1" AS FILED IN BOOK 40 OF MAPS AND PLATS, AT PAGE 57, SAN JOAQUIN COUNTY RECORDS.

## SHEET INDEX:

1. VICINITY MAP AND NOTES
2. PUE ABANDONMENT PLAT

## LEGEND:

BK. BOOK  
EX EXISTING  
VOL. VOLUME  
COS CITY OF STOCKTON  
SJCR SAN JOAQUIN COUNTY RECORDS  
(R) RADIAL  
POC POINT OF COMMENCING  
POB POINT OF BEGINNING

## REFERENCES:

(R1) BK 40 M&P, PAGE 57, SJCR

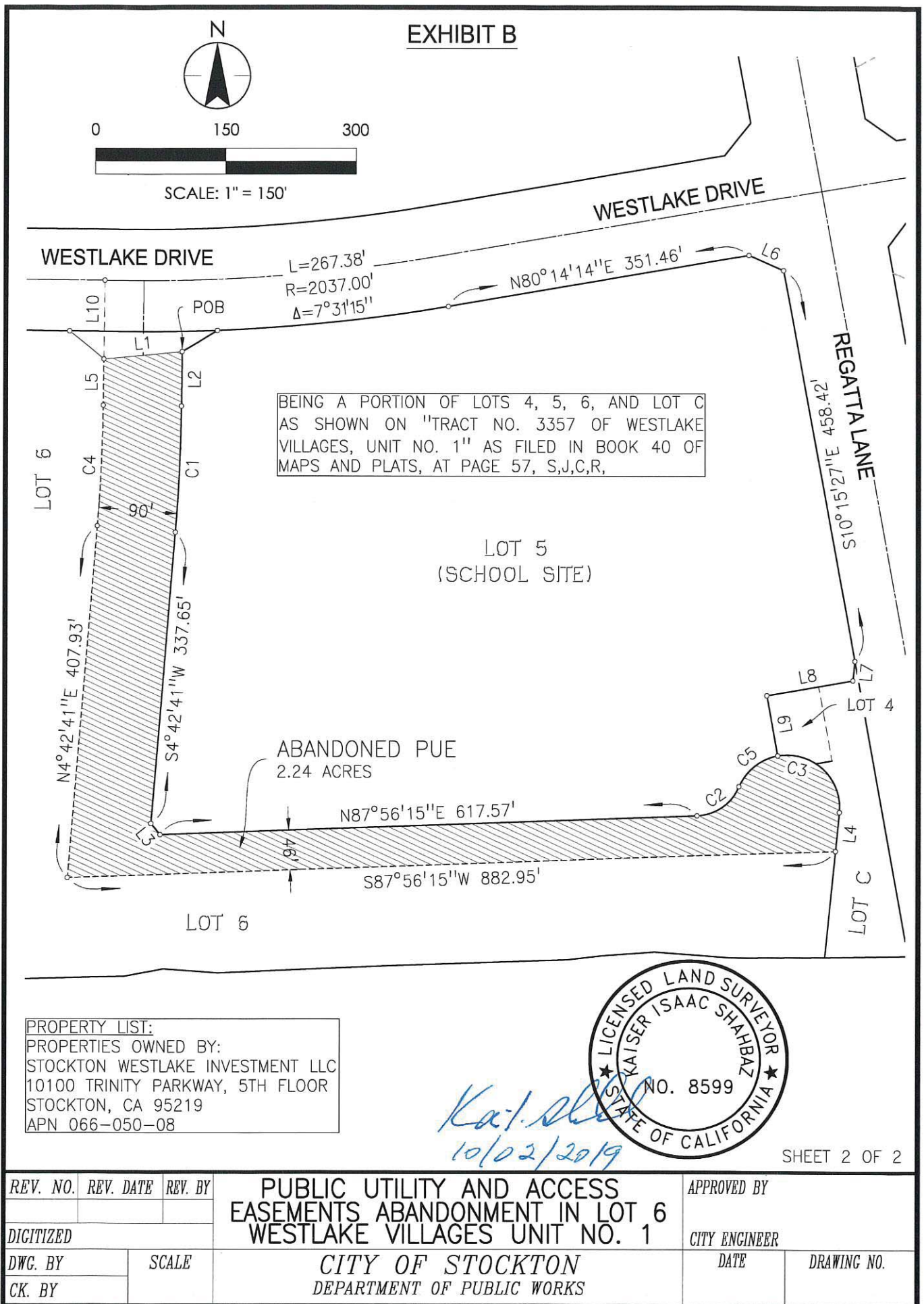


*Kaiser Isaac Shahbaz*  
2/11/2020

SHEET 1 OF 2

REV. NO.	REV. DATE	REV. BY	PUBLIC UTILITY EASEMENT ABANDONMENT IN LOT 6 WESTLAKE VILLAGES UNIT NO. 1		APPROVED BY <i>WW</i>
DIGITIZED					CITY ENGINEER <i>[Signature]</i>
DWG. BY	SCALE		CITY OF STOCKTON DEPARTMENT OF PUBLIC WORKS		DATE <i>2/27/20</i>
CK. BY					DRAWING NO. <i>4711-1A</i>

## EXHIBIT B



REV. NO.	REV. DATE	REV. BY	PUBLIC UTILITY AND ACCESS EASEMENTS ABANDONMENT IN LOT 6 WESTLAKE VILLAGES UNIT NO. 1	APPROVED BY	
DIGITIZED				CITY ENGINEER	
DWG. BY	SCALE		CITY OF STOCKTON DEPARTMENT OF PUBLIC WORKS	DATE	DRAWING NO.
CK. BY					