

# PARCEL MAP COS 18-04

## NOR-CAL LOGISTICS CENTER, NORTH - PHASE 2

(VIN TRACT NO. 3733 (P12-10))  
SUBDIVISION OF PARCELS 2 AND THE DESIGNATED REMAINDER AS SHOWN ON PARCEL MAP COS 18-04, FILED FOR RECORD ON MARCH 13, 2017, IN BOOK 28 OF OFFICIAL RECORDS, SAN JOAQUIN COUNTY RECORDS.

CITY OF STOCKTON - SAN JOAQUIN COUNTY - CALIFORNIA

NOVEMBER 2018

KIER & WRIGHT

CIVIL ENGINEERS & SURVEYORS, INC.  
25331 Granger Canyon Road  
Phone (925) 243-8788  
Fax (925) 243-8786  
www.kierwright.com

### LEGEND:

- ADJACENT PROPERTIES
- BOUNDARY
- FOUND IRON PIPE AS NOTED
- FOUND MONUMENT AS NOTED
- SET 3/4" X 30" IRON PIPE WITH MONUMENT TO MONUMENT
- RIGHT OF WAY
- SEARCHED FOR NOT FOUND
- STAKE
- TOTAL

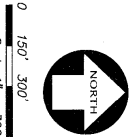
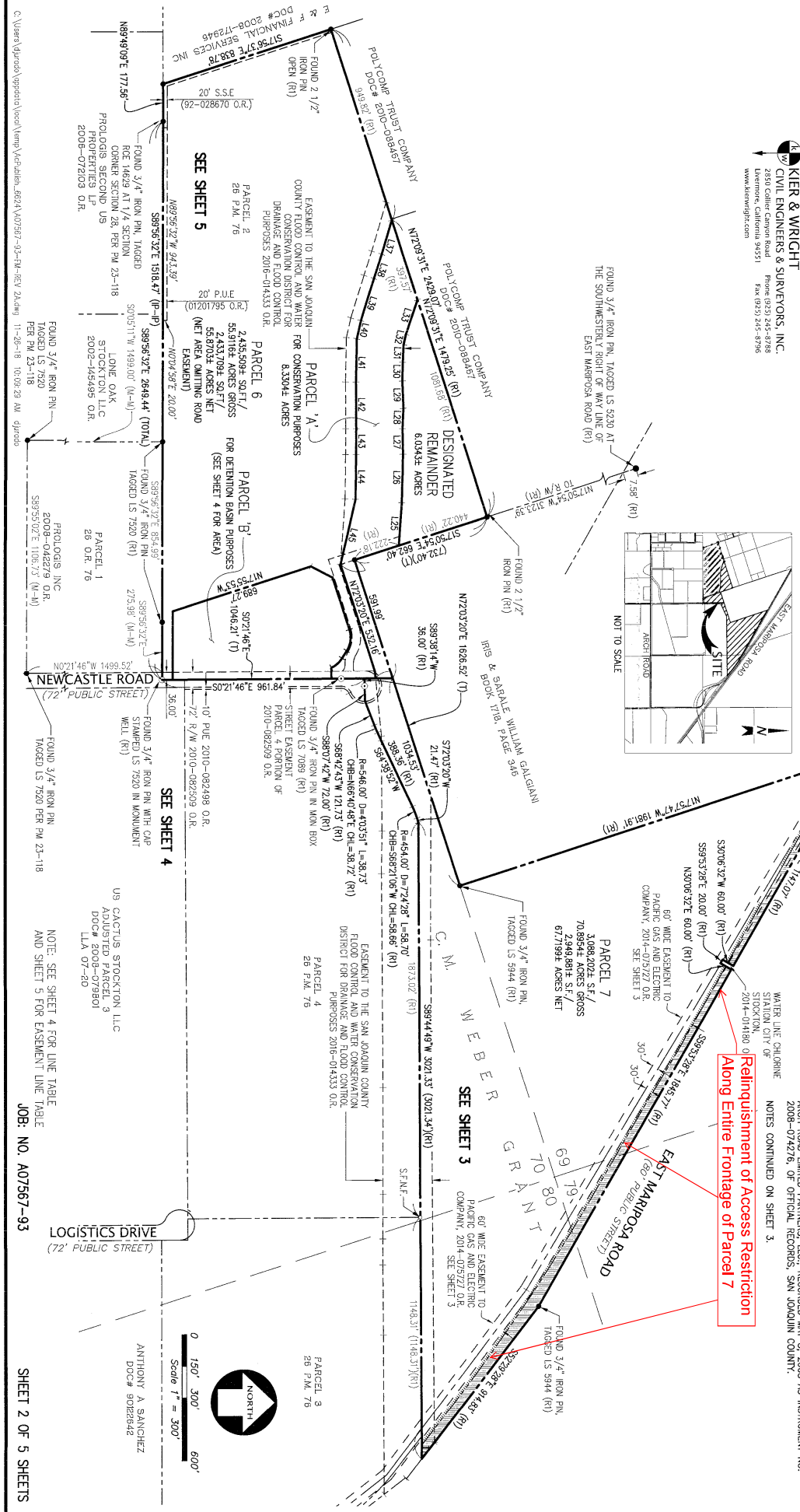
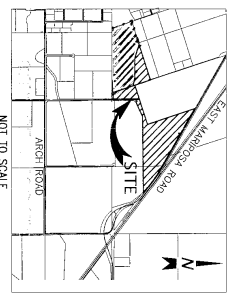
### REFERENCES:

- (R) PARCEL MAP 28 PM 76
- BASE OF BEARINGS
- THE BEARING OF NORTH OF 21° 46' WEST TAKEN ON THE CENTER LINE OF NEWCASTLE ROAD AS SHOWN ON THAT CERTAIN PARCEL MAP, FILED FOR RECORD ON MARCH 13, 2017, IN BOOK 28 OF OFFICIAL RECORDS, SAN JOAQUIN COUNTY RECORDS, WAS TAKEN AS THE BASIS FOR ALL BEARINGS SHOWN HEREON.

### NOTES:

- TITLE ITEMS OF IMPORTANCE:
- A) EASEMENT TO PACIFIC GAS AND ELECTRIC COMPANY, ROW OF POLES PER BOOK 998 OF OFFICIAL RECORDS, PAGE 26, RECORDED MAY 28, 1946, SAN JOAQUIN COUNTY RECORDS, IS SHOWN AND PLOTTED FROM RECORD DATA, BUT THE DOCUMENT DOES NOT CONTAIN A "STORMWATER TREATMENT DEVICE ACCESS AND MAINTENANCE AGREEMENT", EXECUTED BY AND BETWEEN D. BRIDGE FITE AND DARTLINE L. FITE, MARVIN L. OATES AND STOCKTON WAREHOUSE, INC.; RECORDED MAY 2, 1996 AS INSTRUMENT NO. 96-046530, OF OFFICIAL RECORDS, SAN JOAQUIN COUNTY. LOCATION CANNOT BE DETERMINED. SEE REFERENCED DOCUMENT FOR PARTICULARS.
- C) EASEMENT FOR PERPETUAL AIR OR FLIGHT, ALSO REFERRED TO AS "AVIATION RIGHTS" RECORDED AUGUST 14, 2001 AS INSTRUMENT NO. 01132013, OF OFFICIAL RECORDS, SAN JOAQUIN COUNTY. LOCATION CANNOT BE DETERMINED. SEE REFERENCED DOCUMENT FOR PARTICULARS.
- D) MATTERS CONTAINED IN "STORMWATER TREATMENT DEVICE ACCESS AND MAINTENANCE AGREEMENT", EXECUTED BY AND BETWEEN THE CITY OF STOCKTON AND ARCH ROAD LIMITED PARTNERS, LLC; RECORDED MAY 8, 2008 AS INSTRUMENT NO. 2008-074276, OF OFFICIAL RECORDS, SAN JOAQUIN COUNTY.
- NOTES CONTINUED ON SHEET 3.

### VICINITY MAP



0 150' 300' 600'  
Scale 1" = 300'

LOGISTICS DRIVE  
(72' PUBLIC STREET)

ANTHONY A. SANCHEZ  
DOC# 90282942

NOTE: SEE SHEET 4 FOR LINE TABLE  
AND SHEET 5 FOR EASEMENT LINE TABLE

JOB: NO. A07567-93

SHEET 2 OF 5 SHEETS

26-119A

26-119A