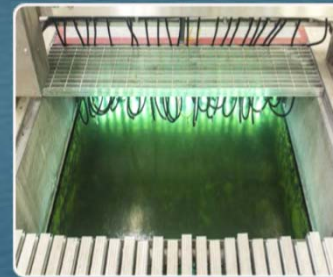


RWCF Modifications Project

AECOM **W. M. LYLES CO.**
— a joint venture —

Water Advisory Group
January 17, 2019



Project Development

- Key Milestones

- Determine Flows and Loads (2035 and 2045): 3-2017
- 10% Facility Process Description & Cost Estimate: 8-2017
- 25% Design & Cost Estimate: 3-2018
- 50% Design & Cost Estimate: 7-2018
- 60% Design with Phase 2 Price: 1-2019
- Phase 2 negotiation final: 2-2019
- Council Consider Award Phase 2A Contract: 3-2019
- Council Consider Award Phase 2B Contract: 6-2019

- Parallel Activities

- EIR Certification by Council: 3-2019
- Financing Plan Approval by Council 6-2019
- Cost of Service Study, Council Approval of rates 5-2019

Project Characteristics

- Moved Tertiary Treatment to Main Plant (East) Side of River
 - No Added Cost
 - Significant Benefit for Plant Operations
- Rehab/Refurbish Existing Headworks
- New Influent Pump Station and Grit
- Primary Clarifier Rehabilitation
 - Returning 2 Clarifiers Back into Service
- Moved New Biological Treatment to South Property
 - Meet NPDES Permit Criteria
 - Provides Interim Operational Flexibility During Construction
 - Potential to Save Cost Due to Construction Efficiencies
 - Ready Future Expansion Capability

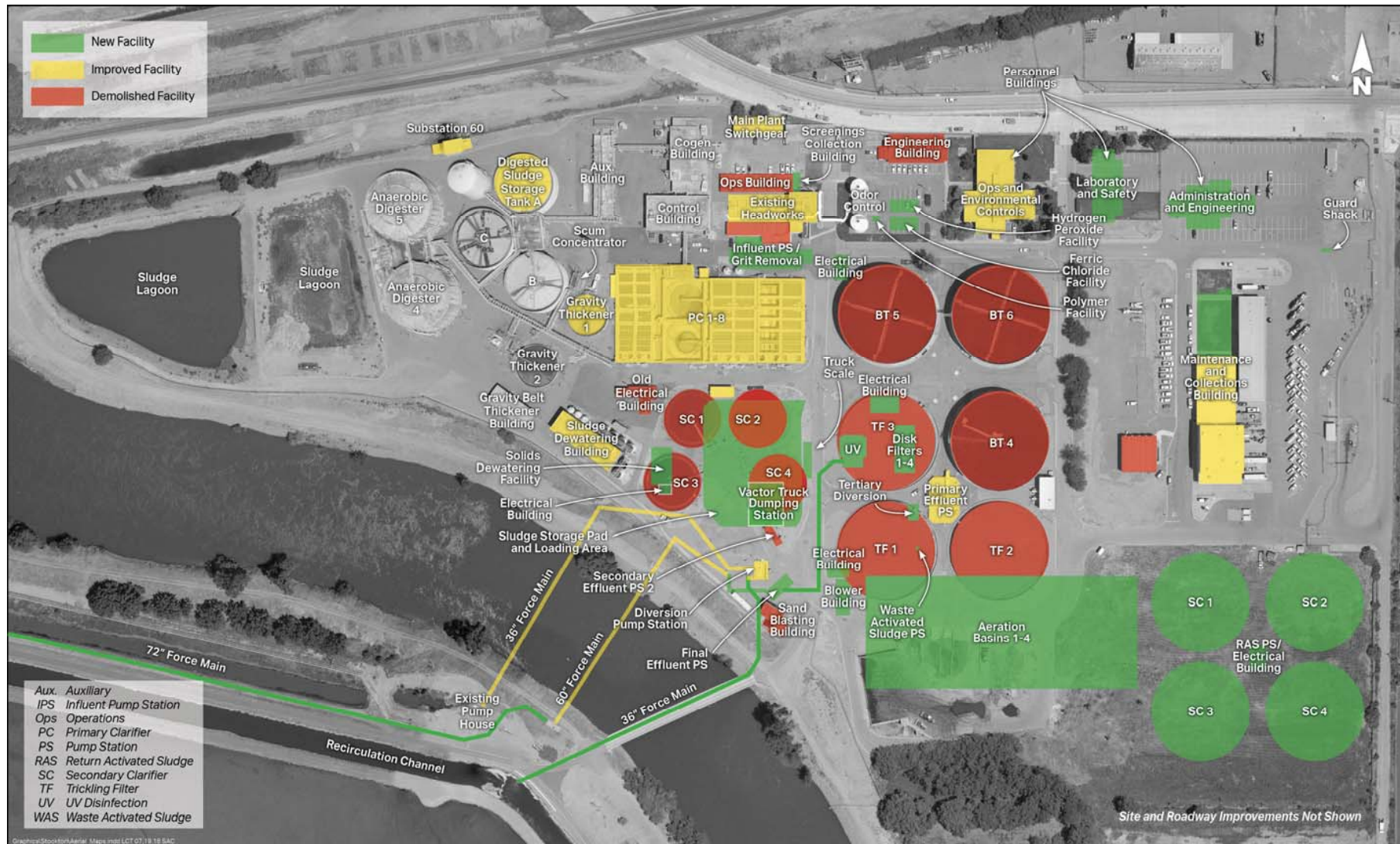
Project Characteristics

- Repurpose Biotower PS, Secondary Eff PS, Gravity Thickener No. 1
- Located New Solids Handling Adjacent to Existing
- Wetlands Will Not be Maintained as Wetlands
- River Discharge via Existing Outfall Initially
 - Scoping New Outfall Feasibility, not part of project at this time
- Existing Ponds and Wetlands will Provide Evaporative Relief of High Flows

Project Characteristics

- Personnel Facilities
 - Lab & Admin – New
 - Maintenance/Collections – Expansion
 - Operations – Remodel
 - Stores
- Anticipated Operational Cost Savings
 - Approximately \$1M/yr to \$2.5M/yr

Overall Site Plan



Building Renderings



Design Submittals-Phase 1

- 60% Design Contract Price
 - \$190M (Does not include non-construction costs and contingency of \$30M)
 - \$165M Construction
 - \$25M Engineering and Construction Management (CM)
 - Project changes regarding price
 - Additional scope (stores, plant water backup system, site-wide backup generator)
 - Project complexity (electrical, structural, site piping)
 - Items Influencing Cost
 - American Iron and Steel
 - Other Raw Materials

Team Structure

- AECOM/Lyles J.V.
 - Project Management – AECOM (Sacramento)
 - Design – AECOM (Chelmsford, MA)
 - Construction Estimating – W.M. Lyles (West Sacramento)
 - Executive Team
 - Sergio Bazarevitsch – AECOM (Denver)
 - Stan Simmons – W.M Lyles (Temecula)
- City
 - MUD Manager – John Abrew
 - Project Manager – Art O'Brien and Jeff Pelz
 - MUD Engineering Staff
 - MUD Operations
 - MUD Maintenance

