



February 28, 2018

Mr. Jason Farnsworth
City of Stockton Municipal Utilities Department
2500 Navy Drive
Stockton, CA 95206

Dear Jason:

**Subject: Western Pacific Industrial Park
Storm Drainage Basin Maintenance District**


On behalf of Siegfried Engineering, Inc., Engineer of Work for the subject maintenance district, I am submitting the following documents for the subject Maintenance District:

1. Proposed 2018-2019 Fiscal Year Budget.
2. Schedule of parcels and assessment amounts for the 2018-2019.
budget and a list of the description of parcels by Assessor Parcel Number (A.P.N.).

Please refer to Amendment No. 8 to the Amended Assessment Diagram for Western Pacific Industrial Park Storm Drainage Basin Maintenance District as no map changes have been made.

The submittal appropriately addresses the requirements of Proposition 218 in that the parcels within the subject district receive one hundred percent (100%) of special benefits from the subject district and zero percent (0%) of general benefits.

Sincerely,
SIEGFRIED


Paul J. Schneider, P.E.

PJS/jh

Enclosures

cc: Mr. Kevin Beltz, City of Stockton, Finance Department (w/ encl.)
City of Stockton, City Clerk's Office (w/ encl.)

Stockton
3244 Brookside Rd., Ste. 100
Stockton, CA 95219
t: 209.943.2021 f: 209.942.0214

San Jose
111 N. Market St., Ste. 300
San Jose, CA 95113
t: 408.754.2021

Sacramento
109 Scripps Drive
Sacramento, CA 95825
t: 916.520.2777

**WESTERN PACIFIC INDUSTRIAL PARK
STORM DRAINAGE BASIN MAINTENANCE DISTRICT
PROPOSED 2018-2019 FISCAL YEAR BUDGET**

Operational Costs	\$14,850.00
Maintenance District Engineering Fee	\$2,453.00
Maintenance District Attorney Fee	\$1,432.00
City of Stockton Administrative Costs	\$3,500.00
City of Stockton Publicity and Advertising Costs	\$85.00
San Joaquin County Processing Fees	\$105.00
Contingencies	<u>\$0.00</u>
Total 2018-2019 Budget	\$22,425.00

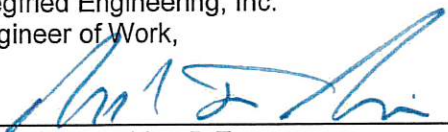
Amount allocated from reserve	<u>\$5,105.00</u>
-------------------------------	-------------------

Amount to be assessed by Western Pacific Industrial Park	\$17,320.00
---	--------------------

The improvements being maintained by this district are a storm water retention basin and appurtenances which are site specific to the parcels being assessed. The improvements and appurtenances do not provide any benefit to any parcel or parcels outside the boundaries of the district. In the opinion of the undersigned, the benefits received by the parcels assessed within the Western Pacific Industrial Park, Storm Drain Maintenance District, from the Western Pacific Industrial Park, Storm Basin Maintenance District, are identified as set forth by Proposition 218 as follows:

Special Benefits-100%
General Benefits - 0%

Siegfried Engineering, Inc.
Engineer of Work,



Paul J. Schneider, P.E.

2/28/18

Date

WESTERN PACIFIC INDUSTRIAL PARK
STORM DRAINAGE BASIN MAINTENANCE DISTRICT

**Schedule of Parcels, Adjusted Drainage Areas and
Assessment Amounts for 2018-2019 Budget**
February 28, 2018

Maintenance District Assessment No.	Assessor's Parcel Number	Adjusted Drainage Area (Acres)	2018-2019 Assessment Amount
7	177-020-39	0.00	\$0.00
12	177-280-02*	2.32	\$95.67
15	177-280-16	0.63	\$25.98
28	177-280-17	0.00	\$0.00
33	177-280-20	5.00	\$206.18
34	177-280-24	10.00	\$412.36
39	177-280-08	2.90	\$119.58
40	177-280-09	3.10	\$127.83
41	177-280-10	5.00	\$206.18
43	177-280-12	7.41	\$305.56
48	177-280-32	24.24	\$999.56
59	177-270-04	3.17	\$130.72
60	177-270-05	5.85	\$241.23
71	177-280-14	35.88	\$1,479.55
72	177-280-13	9.55	\$393.81
81	177-270-24	2.69	\$110.93
82	177-270-23	4.60	\$189.69
90	177-020-56	18.51	\$763.28
91	177-020-57*	0.80	\$32.99
92	177-020-58*	0.71	\$29.28
93	177-020-59	10.35	\$426.79
96	177-270-20	20.16	\$831.32
99	177-280-42*	0.47	\$19.38
100	177-280-43	5.65	\$232.98
101	177-280-44	11.04	\$455.25
102	177-280-45*	0.91	\$37.52
103	177-280-48	10.30	\$424.73
104	177-280-51	0.14	\$5.77
105	177-280-53	0.46	\$18.97
106	177-280-21	23.72	\$978.12
107	177-280-54	19.95	\$822.66
108	177-280-55	33.74	\$1,391.31
109	177-020-68	0.79	\$32.58
111	177-280-59	3.95	\$162.88
112	177-280-60	3.45	\$142.26
113	177-020-73	9.12	\$376.07
114	177-270-29	27.36	\$1,128.22
115	177-280-58	9.11	\$375.66
116	177-270-30	5.93	\$244.53
117	177-270-31	14.51	\$598.34
118	177-020-76	20.88	\$861.01
119	177-020-77	45.67	\$1,883.25
		420.02	\$17,320.00

* - Indicates parcel to be hand billed

DO NOT SEND PARCELS REQUIRING SEPARATE BILLING TO COUNTY AUDITOR



February 28, 2018

Mr. Jason Farnsworth
City of Stockton Municipal Utilities Department
2500 Navy Drive
Stockton, CA 95206

Dear Jason:

**Subject: Charter Way Industrial Site
Storm Drainage Basin Maintenance District**

On behalf of Siegfried Engineering, Inc., Engineer of Work for the subject maintenance district, I am submitting the following documents for the subject Maintenance District:

1. Proposed 2018-2019 Fiscal Year Budget.
2. Schedule of parcels and assessment amounts for the 2018-2019 budget and a list of the description of parcels by Assessor Parcel Number (A.P.N.).

Please refer to the original Assessment Diagram for Charter Way Industrial Storm Drain Detention Basin Maintenance District as no map changes have been made.

The submittal appropriately addresses the requirements of Proposition 218 in that the parcels within the subject district receive one hundred percent (100%) of special benefits from the subject district and zero percent (0%) of general benefits.

Sincerely,
SIEGFRIED

Paul J. Schneider, P.E.

PJS/jh

Enclosures

cc: Mr. Kevin Beltz, City of Stockton, Finance Department (w/ encl.)
City of Stockton, City Clerk's Office (w/ encl.)

Stockton
3244 Brookside Rd., Ste. 100
Stockton, CA 95219
t: 209.943.2021 f: 209.942.0214

San Jose
111 N. Market St., Ste. 300
San Jose, CA 95113
t: 408.754.2021

Sacramento
109 Scripps Drive
Sacramento, CA 95825
t: 916.520.2777

**CHARTER WAY INDUSTRIAL SITE
STORM DRAINAGE BASIN MAINTENANCE DISTRICT
PROPOSED 2018-2019 FISCAL YEAR BUDGET**

Operational Costs	\$14,850.00
Maintenance District Engineering Fee	\$1,468.00
Maintenance District Attorney Fee	\$1,433.00
City of Stockton Administrative Costs	\$3,500.00
City of Stockton Publicity and Advertising Costs	\$85.00
San Joaquin County Processing Fees	\$9.00
Contingencies	<u>\$0.00</u>
Total 2018-2019 Budget	\$21,345.00
Amount allocated from reserve	<u>\$8,345.00</u>
Amount to be assessed by Charter Way Industrial Park	\$13,000.00

The improvements being maintained by this district are a storm water retention basin and appurtenances which are site specific to the parcels being assessed. The improvements and appurtenances do not provide any benefit to any parcel or parcels outside the boundaries of the district. In the opinion of the undersigned, the benefits received by the parcels assessed within the Charter Way Industrial Site, Storm Drain Maintenance District, from the Charter Way Industrial Site, Storm Basin Maintenance District, are identified as set forth by Proposition 218 as follows:

Special Benefits-100%
General Benefits - 0%

Siegfried Engineering, Inc.
Engineer of Work,



Paul J. Schneider, P.E.



Date

Charter Way Industrial Site
Storm Drainage Basin Maintenance District

**SCHEDULE OF PARCELS, ADJUSTED DRAINAGE AREAS and
ASSESSMENT AMOUNTS FOR 2018-2019 BUDGET**

February 28, 2018

Maintenance District Assessment Number	Assessor Parcel Number	Adjusted Drainage Area (Acres)	2018-2019 Assessment Amount
1	163-340-02	23.78	\$7,516.17
2	163-340-03	13.33	4,213.23
3	163-340-08	4.02	1,270.61
4	163-340-04	0.00	0.00
		<u>41.13</u>	<u>\$13,000.00</u>



February 28, 2018

Mr. Jason Farnsworth
City of Stockton Municipal Utilities Department
2500 Navy Dr.
Stockton CA 95206

Dear Jason:

**Subject: Arch Road Industrial Park
Storm Drainage Basin Maintenance District**

On behalf of Siegfried Engineering, Inc., Engineer of Work for the subject maintenance district, I am submitting the following documents for the subject Maintenance District:

1. Proposed 2018-2019 Fiscal Year Budget.
2. Schedule of parcels and assessment amounts for the 2018-2019 budget and a list of the description of parcels by Assessor Parcel Number (A.P.N.).
3. Amendment No. 8 to the Amended Assessment Diagram for Arch Road Industrial Park Storm Drainage Basin Maintenance District.

The submittal appropriately addresses the requirements of Proposition 218 in that the parcels within the subject district receive one hundred percent (100%) of special benefits from the subject district and zero percent (0%) of general benefits.

Sincerely,
SIEGFRIED

Paul J. Schneider, P.E.

PJS/jh

Enclosure

cc: Mr. Kevin Beltz, City of Stockton, Finance Department (w/ encl.)
City of Stockton, City Clerk's Office (w/ encl.)

Stockton
3244 Brookside Rd., Ste. 100
Stockton, CA 95219
t: 209.943.2021 f: 209.942.0214

San Jose
111 N. Market St., Ste. 300
San Jose, CA 95113
t: 408.754.0121

Sacramento
109 Scripps Drive
Sacramento, CA 95825
t: 916.520.2777

**ARCH ROAD INDUSTRIAL PARK
STORM DRAINAGE BASIN MAINTENANCE DISTRICT
PROPOSED 2018-2019 FISCAL YEAR BUDGET**

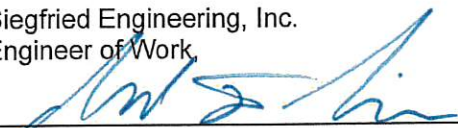
Operational Costs	\$14,850.00
Maintenance District Engineering Fee	\$2,252.00
Maintenance District Attorney Fee	\$1,433.00
City of Stockton Administrative Costs	\$3,500.00
City of Stockton Publicity and Advertising Costs	\$85.00
San Joaquin County Processing Fees	\$165.00
Total 2018-2019 Budget	\$22,285.00
Amount allocated from reserve	<u>\$4,912.00</u>
Amount to be assessed by Arch Road Industrial Park	\$17,373.00

The improvements being maintained by this district are a storm water retention basin and appurtenances which are site specific to the parcels being assessed. The improvements and appurtenances do not provide any benefit to any parcel or parcels outside the boundaries of the district. In the opinion of the undersigned, the benefits received by the parcels assessed within the Arch Road Industrial Park, Storm Drain Maintenance District, from the Arch Road Industrial Park, Storm Basin Maintenance District, are identified as set forth by Proposition 218 as follows:

Special Benefits - 100%

General Benefits - 0%

Siegfried Engineering, Inc.
Engineer of Work



Paul J. Schneider, P.E.

2/28/18

Date

Arch Road Industrial Park
Storm Drainage Basin Maintenance District

**SCHEDULE OF PARCELS, ADJUSTED DRAINAGE AREAS and
ASSESSMENT AMOUNTS FOR 2018-2019 BUDGET**

February 28, 2018

Maintenance District Assessment Number	Adjusted Area (acres)	2018-2019 Assessment Amount
M04	3.22	\$338.81
M05	3.65	\$384.06
M06	1.41	\$148.35
M11	5.67	\$596.60
M12	8.63	\$908.06
M13	7.17	\$754.43
M14	3.22	\$338.81
M18	7.67	\$807.04
M19	3.97	\$417.73
M20	3.97	\$417.73
M21	10.47	\$1,101.66
M22	3.26	\$343.02
M23	4.80	\$505.06
M29	2.70	\$284.10
M30	2.70	\$284.10
M31	2.70	\$284.10
M33	2.70	\$284.10
M34	1.74	\$183.08
M35	1.62	\$170.46
M36	2.50	\$263.05
M37	2.50	\$263.05
M42	1.76	\$185.19
M43	1.83	\$192.55
M44	1.57	\$165.20
M45	1.39	\$146.26
M46	1.73	\$182.03
M47	0.94	\$98.91
M52	3.18	\$334.60
M53	2.81	\$295.67
M54	2.83	\$297.77
M55	2.58	\$271.47
M56	9.44	\$993.28
M57	1.61	\$169.41
M58	1.61	\$169.41

Arch Road Industrial Park
Storm Drainage Basin Maintenance District

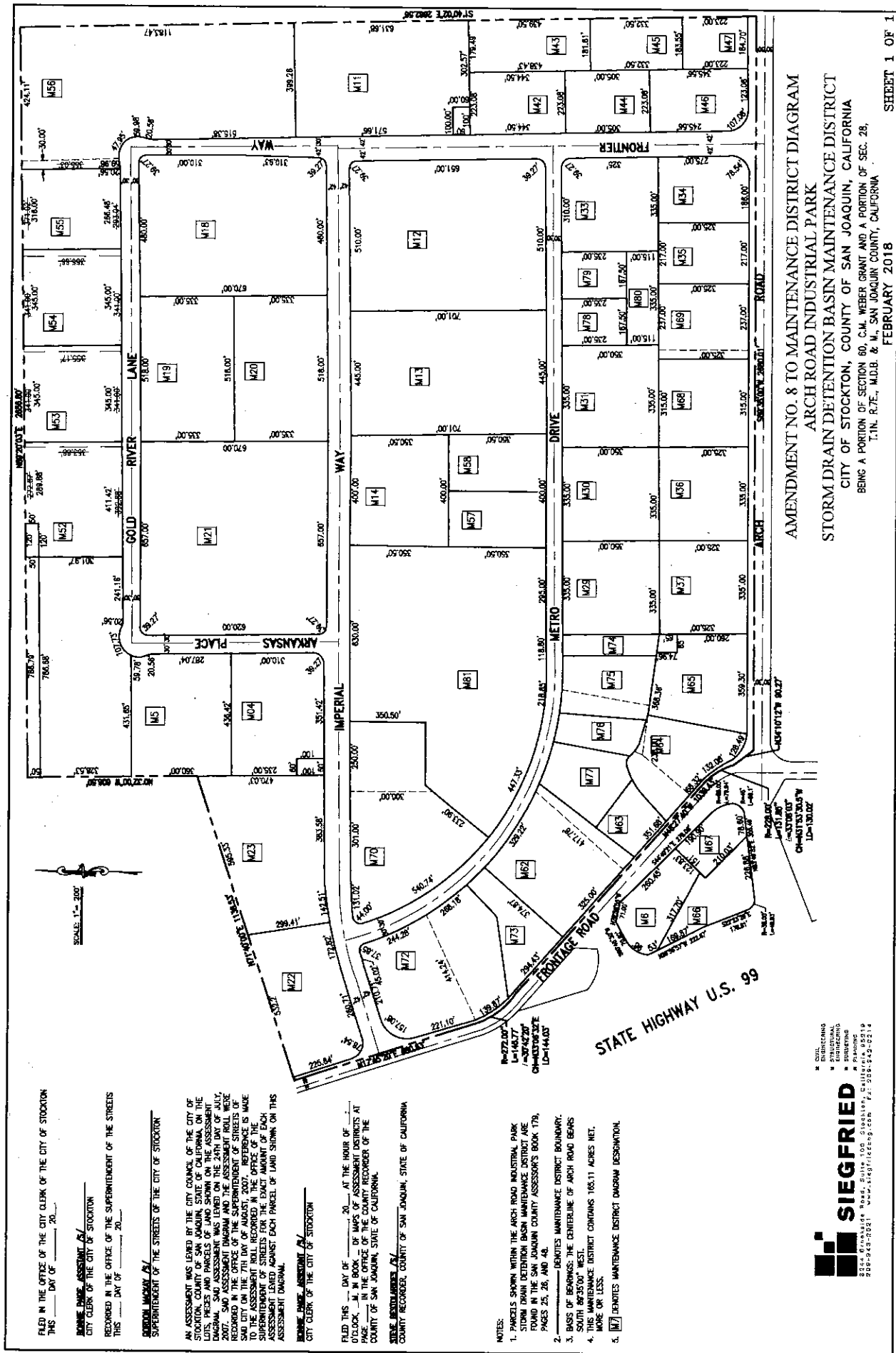
**SCHEDULE OF PARCELS, ADJUSTED DRAINAGE AREAS and
ASSESSMENT AMOUNTS FOR 2018-2019 BUDGET**

February 28, 2018

Maintenance District Assessment Number	Adjusted Area (acres)	2018-2019 Assessment Amount
M62	2.51	\$264.10
M63	1.07	\$112.59
M64	2.94	\$309.35
M65	1.87	\$196.76
M66	1.13	\$118.90
M67	1.01	\$106.27
M68	2.05	\$215.70
M69	2.07	\$217.81
M70	4.83	\$508.22
M72	4.00	\$420.88
M73	1.77	\$186.24
M74	0.72	\$75.76
M75	1.83	\$192.55
M76	1.02	\$107.33
M77	1.20	\$126.26
M78	0.91	\$95.75
M79	0.91	\$95.75
M80	0.88	\$92.59
M81	12.84	\$1,351.04
	165.11	\$17,373.00

* - Indicates parcel to be hand billed

DO NOT SEND PARCELS REQUIRING SEPARATE BILLING TO COUNTY AUDITOR





February 28, 2018

Mr. Jason Farnsworth
City of Stockton Municipal Utilities Department
2500 Navy Dr.
Stockton CA 95206

Dear Jason:

**Subject: Airport Gateway Center
Storm Drainage Basin Maintenance District**

On behalf of Siegfried Engineering, Inc., Engineer of Work for the subject maintenance district, we are submitting the following documents for the subject Maintenance District.

1. Proposed 2018-2019 Fiscal Year Budget.
2. Schedule of parcels and assessment amounts for the 2018-2019 budget and a list of the description of parcels by Assessor Parcel Number (A.P.N.).

Please refer to Amendment No. 5 to the Amended Assessment Diagram for Airport Gateway Center Storm Drain Basin Maintenance District as no map change have been made.

The submittal appropriately addresses the requirements of Proposition 218 in that the parcels within the subject district receive one hundred percent (100%) of special benefits from the subject district and zero percent (0%) of general benefits. In addition, in accordance with the formation of the District, the maximum assessment amount has been increased using the escalator of 3.2%, which is the applicable escalator for the fiscal year 2018-2019.

Sincerely,
SIEGFRIED


Paul J. Schneider, P.E.

PJS/jh

Enclosures

cc: Mr. Kevin Beltz, City of Stockton, Finance Department (w/ encl.)
City of Stockton, City Clerk's Office (w/ encl.)

Stockton
3244 Brookside Rd., Ste. 100
Stockton, CA 95219
t: 209.943.2021 f: 209.942.0214

San Jose
111 N. Market St., Ste. 300
San Jose, CA 95113
t: 408.754.0121

Sacramento
109 Scripps Drive
Sacramento, CA 95825
t: 916.520.2777

**AIRPORT GATEWAY CENTER
STORM DRAINAGE BASIN MAINTENANCE DISTRICT
PROPOSED 2018-2019 FISCAL YEAR BUDGET**

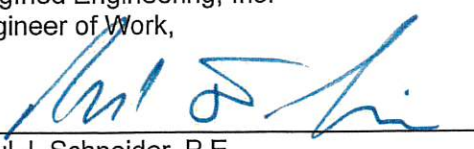
Operational Costs	\$14,850.00
Maintenance District Engineering Fee	\$3,536.00
Maintenance District Attorney Fee	\$1,545.00
City of Stockton Administrative Costs	\$4,000.00
City of Stockton Publicity and Advertising Costs	\$85.00
San Joaquin County Processing Fees	\$96.00
Capital Replacement	\$1,735.00
Contingency – Reserve	<u>\$2,411.00</u>
Total 2018-2019 Budget	\$28,258.00
 Total Amount to be Assessed by Airport Gateway Center	 \$28,258.00
 2018-2019 Maximum Total Assessment Amount	 \$97,311.37

The improvements being maintained by this district are a storm water retention basin and appurtenances which are site specific to the parcels being assessed. The improvements and appurtenances do not provide any benefit to any parcel or parcels outside the boundaries of the district. In the opinion of the undersigned, the benefits received by the parcels assessed within the Airport Gateway Center, Storm Drain Maintenance District, from the Airport Gateway Center, Storm Basin Maintenance District, are identified as set forth by Proposition 218 as follows:

Special Benefits - 100%

General Benefits - 0%

Siegfried Engineering, Inc.
Engineer of Work,


Paul J. Schneider, P.E.


Date

Airport Gateway Center
Storm Drainage Basin Maintenance District

**SCHEDULE OF PARCELS, ADJUSTED DRAINAGE AREAS &
ASSESSMENT AMOUNTS FOR 2018-2019 BUDGET**

February 28, 2018

Mx District Assessment No.	Current A.P.N.	Current Adj. Drng Area (acres)	2018-2019 Max. Assmt.	2018-2019 Actual Assmt.
M02	177-460-09	5.000	\$1,352.05	\$392.62
M05	177-450-07	10.960	\$2,963.69	\$860.62
M10	177-450-24	11.430	\$3,090.79	\$897.53
M11	177-450-27	21.540	\$5,824.63	\$1,691.40
M12	177-450-28	10.040	\$2,714.92	\$788.38
M24	177-460-10	28.130	\$7,606.63	\$2,208.87
M25	177-450-22	1.490	\$402.91	\$117.00
M26	177-450-14	23.500	\$6,354.64	\$1,845.31
M29	177-450-03	0.000	\$0.00	\$0.00
M30	177-450-11	0.000	\$0.00	\$0.00
M31	177-450-12	24.300	\$6,570.96	\$1,908.13
M35	177-450-26	0.000	\$0.00	\$0.00
M36-M42	177-460-23	66.150	\$17,887.62	\$5,194.34
M43	177-450-04	17.050	\$4,610.49	\$1,338.83
M44	177-450-10	8.440	\$2,282.26	\$662.74
M45	177-460-06	1.100	\$297.45	\$86.38
M46	177-460-07	0.882	\$238.50	\$69.26
M47	177-460-08	0.763	\$206.32	\$59.91
M48	177-460-01	0.895	\$242.02	\$70.28
M49	177-460-02	0.616	\$166.57	\$48.37
M50	177-460-03	0.476	\$128.72	\$37.38
M51	177-460-04	0.576	\$155.76	\$45.23
M52	177-460-05	0.816	\$220.65	\$64.08
M53	177-450-30	10.160	\$2,747.37	\$797.80
M54	177-450-06	4.190	\$1,133.02	\$329.01
M55	177-450-13	20.420	\$5,521.77	\$1,603.45
M58	177-450-23	6.620	\$1,790.11	\$519.83
M59	177-450-25	20.470	\$5,535.29	\$1,607.38
M60	177-450-31	2.730	\$738.22	\$214.37
M61	177-450-32	4.630	\$1,252.00	\$363.56
M62	177-450-33	48.872	\$13,215.48	\$3,837.61
M63	177-450-34	7.620	\$2,060.52	\$598.35
		<u>359.866</u>	<u>\$97,311.37</u>	<u>\$28,258.00</u>



February 28, 2018

Mr. Jason Farnsworth
City of Stockton Municipal Utilities Department
2500 Navy Dr.
Stockton CA 95206

Dear Jason:

**Subject: Stockton Airport Business Center
Storm Drain Basin Maintenance District**

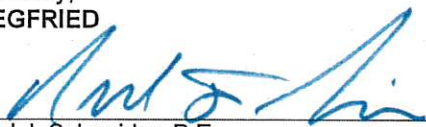
On behalf of Siegfried Engineering, Inc., Engineer of Work for the subject maintenance district, I am submitting the following revised documents for the subject Maintenance District:

1. Proposed 2018-2019 Fiscal Year Budget.
2. Schedule of parcels and assessment amounts for the 2018-2019 budget and a list of the description of parcels by Assessor Parcel Number (A.P.N.).

Please refer to Amendment No. 7 to the Amended Assessment Diagram for Stockton Airport Business Park Assessment District, Project No. 84-1, Storm Basin Maintenance District as no map changes have been made.

The submittal appropriately addresses the requirements of Proposition 218 in that the parcels within the subject district receive one hundred percent (100%) of special benefits from the subject district and zero percent (0%) of general benefits.

Sincerely,
SIEGFRIED


Paul J. Schneider, P.E.

PJS/jh

Enclosures

cc: Mr. Kevin Beltz, City of Stockton, Finance Department (w/ encl.)
City of Stockton, City Clerk's Office (w/ encl.)

Stockton
3244 Brookside Rd., Ste. 100
Stockton, CA 95219
t: 209.943.2021 f: 209.942.0214

San Jose
111 N. Market St., Ste. 300
San Jose, CA 95113
t: 408.754.0121

Sacramento
109 Scripps Drive
Sacramento, CA 95825
t: 916.520.2777

**STOCKTON AIRPORT BUSINESS CENTER
STORM DRAINAGE BASIN MAINTENANCE DISTRICT
PROPOSED 2018-2019 FISCAL YEAR BUDGET**

Operational Costs	\$14,850.00
Maintenance District Engineering Fee	\$2,252.00
Maintenance District Attorney Fee	\$1,514.00
City of Stockton Administrative Costs	\$5,000.00
City of Stockton Publicity and Advertising Costs	\$85.00
San Joaquin County Processing Fees	\$133.00
Total 2018-2019 Budget	\$23,834.00
Less: Contribution from Little John Creek Landscape Maintenance District No. 94-1	\$5,096.00
Less: Contribution from Seabreeze Landscape Maintenance District No. 96-2	\$2,116.00
Amount allocated from reserve	\$3,430.00
Amount to be Assessed by Stockton Airport Business Center	\$13,192.00
2018-2019 Maximum Assessment – Original District <i>Calculated as each parcel's share by area of the original assessment</i>	\$18,678.23
2018-2019 Maximum Assessment – Parkside/Massie Annexation <i>Calculated as a per acre assessment of \$70.20</i>	<u>\$20,953.01</u>
2018-2019 Maximum Total Assessment	\$39,631.24

The improvements being maintained by this district are a storm water retention basin and appurtenances which are site specific to the parcels being assessed. The improvements and appurtenances do not provide any benefit to any parcel or parcels outside the boundaries of the district that have not been charged their appropriate share which amount has been credited to the maintenance assessment prior to the determination of the final amount assessed to each parcel herein. In the opinion of the undersigned, the benefits received by the parcels assessed within the Stockton Airport Business Center, Storm Drain Maintenance District, from the Stockton Airport Business Center, Storm Basin Maintenance District, are identified as set forth by Proposition 218 as follows:

Special Benefits - 100%

General Benefits - 0%

Siegfried Engineering, Inc.
Engineer of Work,

Paul J. Schneider, P.E.

Date

Stockton Airport Business Center
Storm Drainage Basin Maintenance District

**SCHEDULE OF PARCELS, ADJUSTED DRAINAGE AREAS, ANNEXED AREAS &
ASSESSMENT AMOUNTS FOR 2018-2019 BUDGET**
February 28, 2018

Maintenance District Assessment Number	Assessor's Parcel Number (if known)	Adjusted Drainage Area (Acres)	2018-2019 Maximum Assessment**	2018-2019 Actual Assessment Amount
1	177-130-16	5.476	243.37	\$100.50
2	177-130-17	5.664	251.73	\$103.95
3	177-130-18	4.965	220.66	\$91.13
5	177-130-20	8.752	388.97	\$160.63
6	177-130-21	2.535	112.67	\$46.53
11	177-130-26	5.204	231.29	\$95.51
30	179-240-07*	1.411	62.71	\$25.90
31	179-240-08*	1.294	57.51	\$23.75
32	179-240-09*	2.408	107.02	\$44.20
33	179-240-10*	2.505	111.33	\$45.98
34	179-240-16*	4.502	200.09	\$82.63
35	179-240-17	3.010	133.78	\$55.24
39	179-280-09	1.824	81.07	\$33.48
40	179-280-10*	2.887	128.31	\$52.99
41	179-280-11*	2.363	105.02	\$43.37
42	179-280-13*	3.150	140.00	\$57.81
45	179-280-19	3.640	161.78	\$66.81
47	179-280-21	3.510	156.00	\$64.42
215	179-280-34	7.597	337.64	\$139.43
48	179-280-22	15.000	666.66	\$275.30
49	179-280-23	9.444	419.73	\$173.33
64	179-300-04	0.897	39.87	\$16.46
65	179-300-08	0.797	35.42	\$14.63
66	179-300-10	3.227	143.42	\$59.23
67	179-300-11	1.986	88.27	\$36.45
71	179-340-07	2.958	131.46	\$54.29
72	179-340-08	3.241	144.04	\$59.48
82	179-270-04	3.566	158.49	\$65.45
83	179-240-11*	2.652	117.87	\$48.67
86	179-290-16	3.923	174.35	\$72.00
87	179-290-17	3.372	149.86	\$61.89
91	179-290-18	8.094	359.73	\$148.55
92	179-340-12	12.590	559.55	\$231.07
93	179-340-06	3.331	148.04	\$61.14
249	177-130-39	21.079	936.83	\$386.87
96	177-310-18	10.150	451.10	\$186.29
97	179-280-30	17.676	785.59	\$324.42
104	179-290-24	3.051	135.60	\$56.00
105	179-290-25	2.520	112.00	\$46.25
106	179-290-26	9.750	433.33	\$178.95
107	179-290-27	11.495	510.88	\$210.97
110	177-130-35	6.548	291.02	\$120.18
111	177-130-36	6.028	267.91	\$110.64
112	177-130-37	8.868	394.13	\$162.76
136	179-290-28	0.290	12.89	\$5.32
137	179-290-29	4.720	209.77	\$86.63
138	179-290-30	2.480	110.22	\$45.52
140	177-310-19	4.370	194.22	\$80.21
141	177-310-20	2.650	117.78	\$48.64
142	177-310-22	4.060	180.44	\$74.52
158	179-280-32	9.910	440.44	\$181.88
161	179-520-01	0.000	0.00	\$0.00
162	179-520-02	0.000	0.00	\$0.00

Stockton Airport Business Center
Storm Drainage Basin Maintenance District

**SCHEDULE OF PARCELS, ADJUSTED DRAINAGE AREAS, ANNEXED AREAS &
ASSESSMENT AMOUNTS FOR 2018-2019 BUDGET**

February 28, 2018

Maintenance District Assessment Number	Assessor's Parcel Number (if known)	Adjusted Drainage Area (Acres)	2018-2019 Maximum Assessment**	2018-2019 Actual Assessment Amount
163	179-520-03	0.000	0.00	\$0.00
164	179-520-04	0.000	0.00	\$0.00
165	179-520-05	0.000	0.00	\$0.00
166	179-520-06	0.000	0.00	\$0.00
167	179-520-07	0.000	0.00	\$0.00
168	179-520-08	0.000	0.00	\$0.00
169	179-520-09	0.000	0.00	\$0.00
170	179-520-10	0.000	0.00	\$0.00
171	179-520-11	0.000	0.00	\$0.00
172	179-520-12	0.000	0.00	\$0.00
173	179-520-13	0.000	0.00	\$0.00
174	179-520-14	0.000	0.00	\$0.00
175	179-520-15	0.000	0.00	\$0.00
176	179-520-16	0.000	0.00	\$0.00
177	179-520-17	0.000	0.00	\$0.00
178	179-520-18	0.000	0.00	\$0.00
179	179-520-19	0.000	0.00	\$0.00
180	179-520-20	0.000	0.00	\$0.00
181	179-520-21	0.000	0.00	\$0.00
182	179-520-22	0.000	0.00	\$0.00
183	179-520-23	0.000	0.00	\$0.00
184	179-520-24	5.420	240.89	\$99.48
185	179-540-01	0.270	12.00	\$4.96
186	179-540-02	0.270	12.00	\$4.96
187	179-540-03	0.270	12.00	\$4.96
188	179-540-04	0.270	12.00	\$4.96
189	179-540-05	0.270	12.00	\$4.96
190	179-540-06	0.270	12.00	\$4.96
191	179-540-07	0.270	12.00	\$4.96
192	179-540-08	0.270	12.00	\$4.96
193	179-540-09	0.270	12.00	\$4.96
194	179-540-10	0.272	12.09	\$4.99
195	179-540-11	0.272	12.09	\$4.99
196	179-540-12	0.272	12.09	\$4.99
197	179-540-13	0.270	12.00	\$4.96
198	179-540-14	0.270	12.00	\$4.96
199	179-540-15	0.270	12.00	\$4.96
200	179-540-16	0.270	12.00	\$4.96
201	179-540-17	0.270	12.00	\$4.96
202	179-540-18	0.270	12.00	\$4.96
203	179-540-19	0.270	12.00	\$4.96
204	179-540-20	0.000	0.00	\$0.00
207	177-130-38	1.861	82.71	\$34.16
208	177-310-23	29.070	1,291.98	\$533.54
212	179-240-18	2.310	102.67	\$42.40
213	179-240-19	1.458	64.80	\$26.76
218	179-290-32	0.090	4.00	\$1.65
219	179-290-33	2.830	125.78	\$51.94
220	179-290-34	6.600	293.33	\$121.13
221	177-310-24	2.840	126.22	\$52.12
222	177-310-25	6.210	276.00	\$113.98
223	179-280-35	2.085	92.67	\$38.27
224	179-280-36	2.085	92.67	\$38.27

Stockton Airport Business Center
Storm Drainage Basin Maintenance District

**SCHEDULE OF PARCELS, ADJUSTED DRAINAGE AREAS, ANNEXED AREAS &
ASSESSMENT AMOUNTS FOR 2018-2019 BUDGET**

February 28, 2018

Maintenance District Assessment Number	Assessor's Parcel Number (if known)	Adjusted Drainage Area (Acres)	2018-2019 Maximum Assessment**	2018-2019 Actual Assessment Amount
225	179-290-37	14.340	637.32	\$263.19
226	179-290-38	1.060	47.11	\$19.45
227	179-290-35	5.590	248.44	\$102.60
228	179-290-36	5.010	222.66	\$91.95
229	177-310-21	1.310	58.22	\$24.04
230	179-570-01	1.095	48.67	\$20.10
231	179-570-02	0.860	38.22	\$15.78
232	179-570-03	0.889	39.51	\$16.32
233	179-570-04	0.919	40.84	\$16.87
234	179-570-05	0.969	43.07	\$17.78
235	179-570-06	1.044	46.40	\$19.16
236	179-570-07	0.787	34.98	\$14.44
237	179-570-08	0.787	34.98	\$14.44
238	179-570-09	1.400	62.22	\$25.69
239	179-570-10	1.085	48.22	\$19.91
240	179-570-11	0.818	36.36	\$15.01
241	179-570-12	0.818	36.36	\$15.01
242	179-570-13	1.273	56.58	\$23.36
243	177-510-05	0.430	19.11	\$7.89
244	177-510-04	0.340	15.11	\$6.24
245	177-510-03	0.350	15.56	\$6.42
246	177-510-02	0.300	13.33	\$5.51
247	177-510-01	0.350	15.56	\$6.42
248	177-510-06	2.150	95.55	\$39.46
250	179-340-13	21.180	941.32	\$388.73
251	179-240-20	2.310	102.67	\$42.40
252	179-280-37	2.377	93.35	\$43.63
253	179-280-38	9.010	412.73	\$165.37
subtotal original district assessment		420.27	18,678.23	\$7,713.37
113	177-290-01	11.92	836.70	\$218.77
114	177-290-05	15.55	1,091.50	\$285.40
117	177-330-02	2.07	145.30	\$37.99
118	177-330-03	2.04	143.19	\$37.44
119	177-330-04	1.98	138.98	\$36.34
120	177-330-05	1.99	139.68	\$36.52
121	177-330-06	1.98	138.98	\$36.34
122	177-330-07	0.00	0.00	\$0.00
123	177-330-20	9.51	667.54	\$174.54
124	177-330-21	1.42	99.67	\$26.06
125	177-330-22	1.41	98.97	\$25.88
126	177-330-13	1.22	85.64	\$22.39
127	177-330-14	1.21	84.93	\$22.21
128	177-330-15	1.34	94.06	\$24.59
130	177-320-07	3.41	239.36	\$62.59
133	177-320-02	3.84	269.54	\$70.48
143	177-320-08	2.850	200.05	\$52.31
144	177-320-09	4.060	284.98	\$74.52
146	177-140-24*	0.225	15.79	\$4.13
148	177-140-26	24.740	1,736.58	\$454.07
149	177-140-27	70.750	4,966.16	\$1,298.51
150	177-140-36	30.030	2,107.90	\$551.16
151	177-140-29	0.000	0.00	\$0.00

Stockton Airport Business Center
Storm Drainage Basin Maintenance District

**SCHEDULE OF PARCELS, ADJUSTED DRAINAGE AREAS, ANNEXED AREAS &
ASSESSMENT AMOUNTS FOR 2018-2019 BUDGET**

February 28, 2018

Maintenance District Assessment Number	Assessor's Parcel Number (if known)	Adjusted Drainage Area (Acres)	2018-2019 Maximum Assessment**	2018-2019 Actual Assessment Amount
152	177-140-30	0.000	0.00	\$0.00
153	177-320-11	6.440	452.04	\$118.20
154	177-320-12	4.100	287.79	\$75.25
155	177-330-24	2.750	193.03	\$50.47
156	177-330-25	2.270	159.34	\$41.66
160	177-330-27	5.000	350.97	\$91.77
206	177-140-32	24.000	1,684.64	\$440.49
209	177-140-34	0.000	0.00	\$0.00
210	177-140-35	0.000	0.00	\$0.00
211	177-140-33	55.190	3,873.96	\$1,012.93
216	177-330-28	2.630	184.61	\$48.27
217	177-330-29	2.580	181.10	\$47.35
subtotal Parkside/Massie annexation		298.51	20,953.01	5,478.63
DISTRICT TOTALS		718.771	39631.24	13192.00

* - SEPARATE BILLING REQUIRED, SAN JOAQUIN OFFICE OF EDUCATION
DO NOT INCLUDE PARCELS REQUIRING SEPARATE BILLING ON ROLL SENT TO COUNTY AUDITOR

**Total Maximum Assessment amount is \$39,631.24 which is comprised of the original district assessment of \$18,678.23 and the Maximum Assessment applied to the parcels annexed as Parkside/Massie of \$20,953.00. The original district maximum assessment is calculated as each parcel's share, by area, of the original district total assessment. The 2018-2019 maximum assessment for the parcels annexed as Parkside/Massie is calculated at a per acre assessment of \$70.20