

# WEST WEBER AVENUE CUL-DE-SAC STREET IMPROVEMENTS

## CITY OF STOCKTON PUBLIC WORKS DEPARTMENT

SHEET INDEX

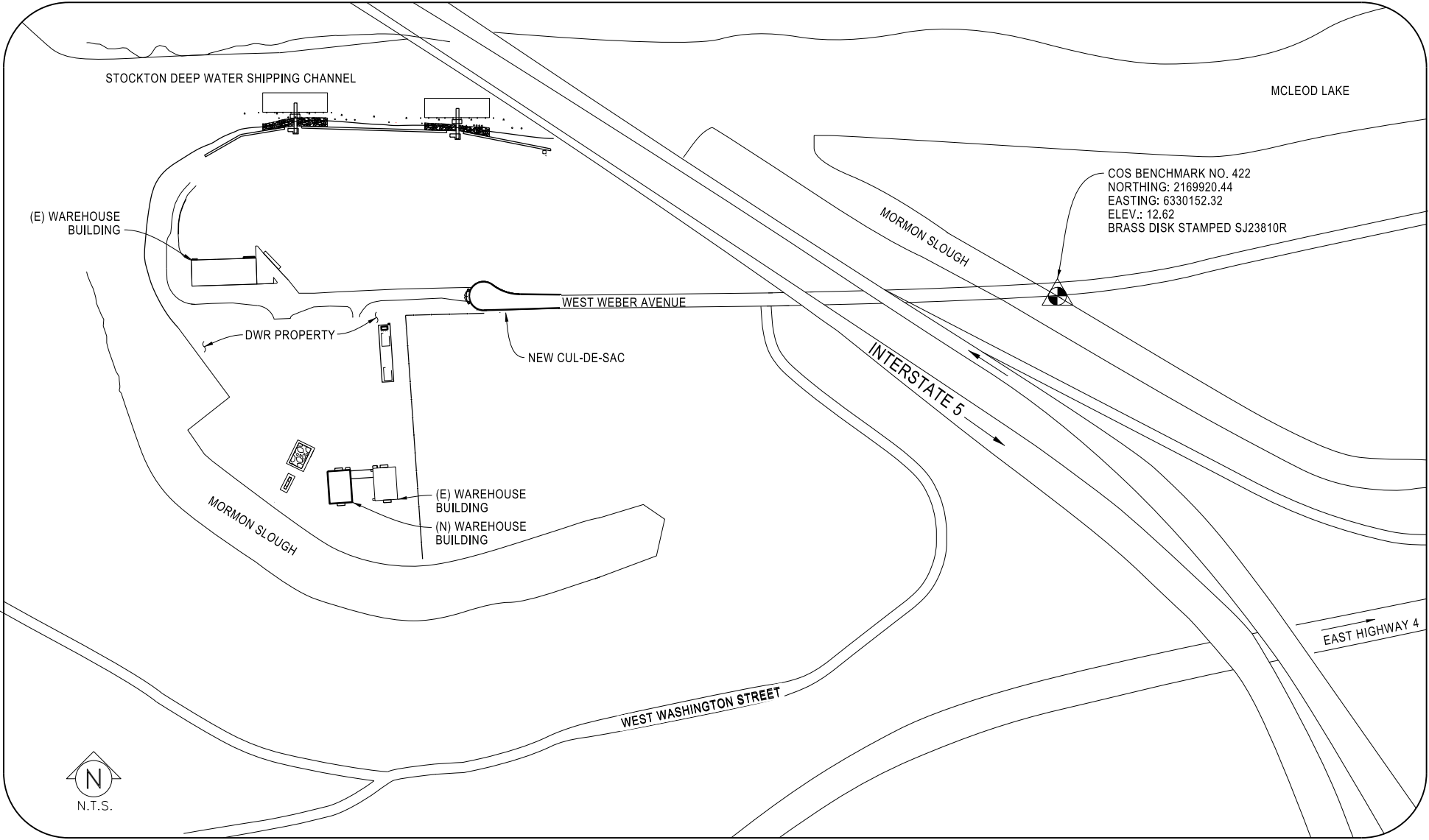
SHEET NO	DESCRIPTION
1	TITLE SHEET, CONVENTIONS, SHEET INDEX AND SITE MAP
2	CUL-DE-SAC PLAN, SECTIONS, AND DETAILS
3	STORM DRAIN PLAN AND PROFILES

ABBREVIATIONS

CCJ	CRACK CONTROL JOINT
CL	CENTERLINE
DWR	DEPARTMENT OF WATER RESOURCES
ELEV.	ELEVATION
(E)	EXISTING
F.G.	FINISH GRADE
FL	FLOW LINE
HMA	HOT MIX ASPHALT
HP	HIGH POINT
INV.	INVERT
LL	LAYOUT LINE
LT	LEFT
MIN.	MINIMUM
NAD	NORTH AMERICAN DATUM
NAVD	NORTH AMERICAN VERTICAL DATUM
NO.	NUMBER
O.C.	ON CENTER
O.G.	ORIGINAL GRADE
PT	POINT
RCP	REINFORCED CONCRETE PIPE
RT	RIGHT
S	SOUTH
STA.	STATION
TYP.	TYPICAL
W	WEST

CONVENTIONS

	BENCH MARK - VERTICAL & HORIZONTAL
	BENCH MARK - VERTICAL, ONLY
	TEMPORARY CONTROL POINT OR T.B.M.
	NOTE INDICATOR
	DETAIL IDENTIFICATION NUMBER
	DRAWING WHERE DETAIL IS SHOWN
	DETAIL INDICATOR
	NOTE NUMBER AS INDICATED
	REVISION
	REVISION NUMBER
	SECTION INDICATOR
	DETAIL IDENTIFICATION NUMBER
	DRAWING WHERE DETAIL IS DRAWN
	MATCH LINE
	SHADED PORTION IS THE SIDE CONSIDERED
	NUMBER INDICATES ADJACENT DRAWING
	NOTE INDICATOR
	NOTE NUMBER AS INDICATED



SITE MAP

TITLE SHEET, ABBREVIATIONS, CONVENTIONS,  
SHEET INDEX AND SITE MAP

DATE:  
03/30/16

Original Drawing Scale  
0 1/2" 1"

Revisions

No.	Description	Date	By	Appr. By

STATE OF CALIFORNIA  
CALIFORNIA NATURAL RESOURCES AGENCY  
DEPARTMENT OF WATER RESOURCES  
DIVISION OF ENGINEERING

1416 9TH STREET, RM. 518  
SACRAMENTO, CA 95814

CUL-DE-SAC STREET IMPROVEMENT

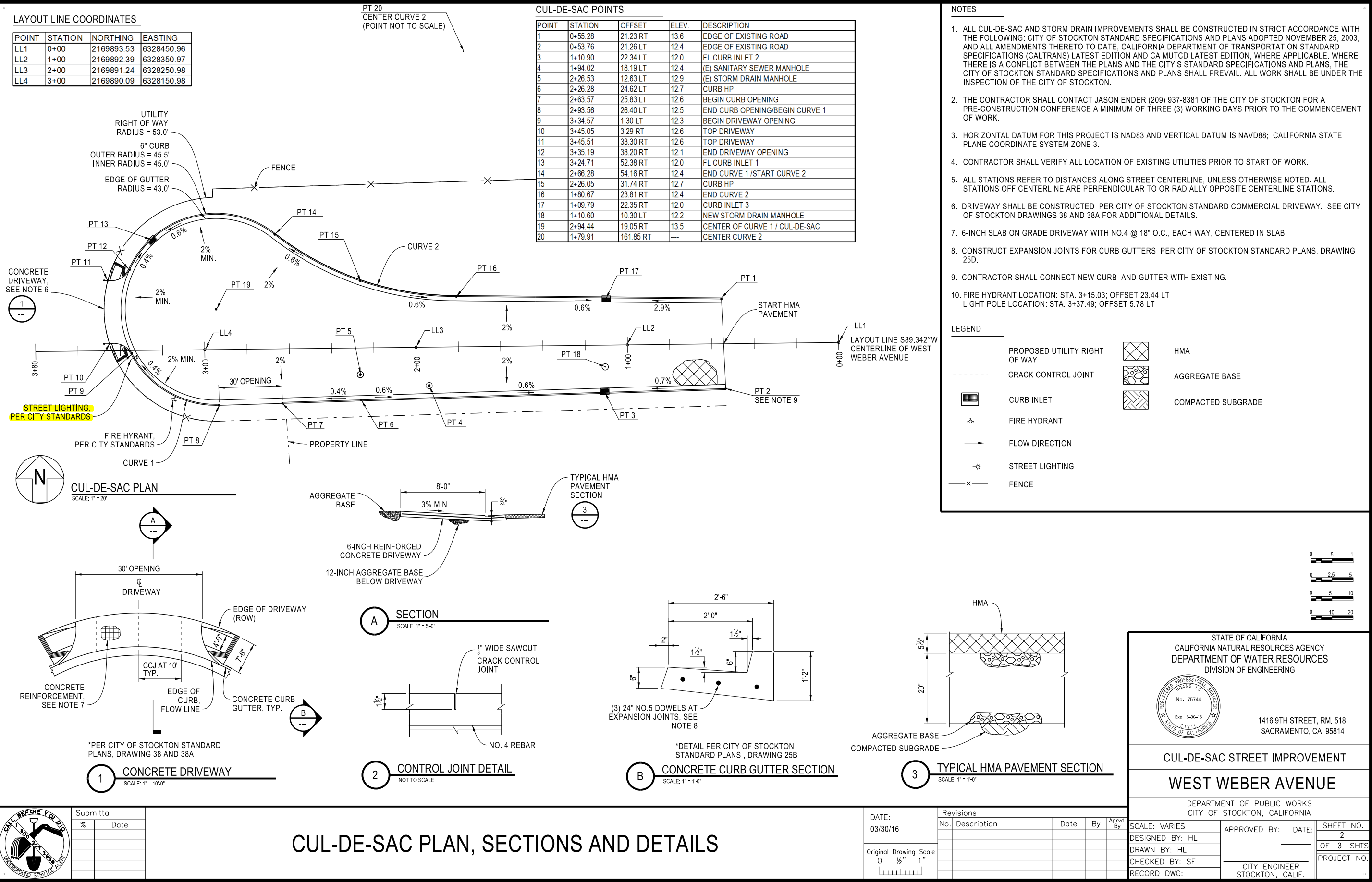
WEST WEBER AVENUE

DEPARTMENT OF PUBLIC WORKS  
CITY OF STOCKTON, CALIFORNIA

SCALE: VARIES	APPROVED BY: DATE:	SHEET NO.
DESIGNED BY: HL		1
DRAWN BY: HL		OF 3 SHTS
CHECKED BY: SF	CITY ENGINEER	PROJECT NO.
RECORD DWG:	STOCKTON, CALIF.	



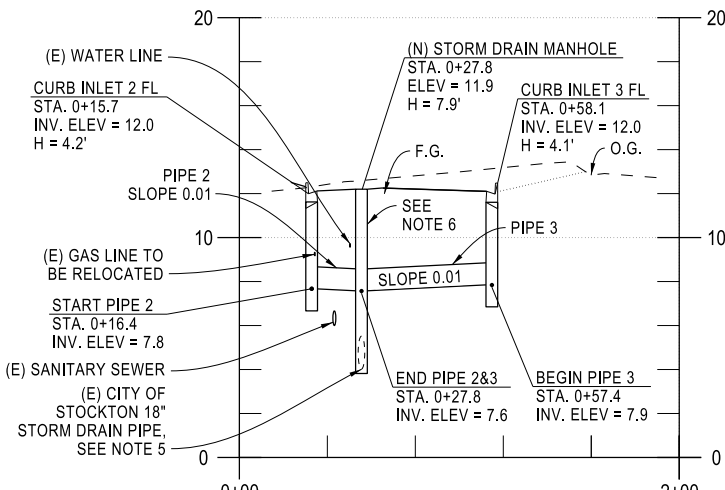
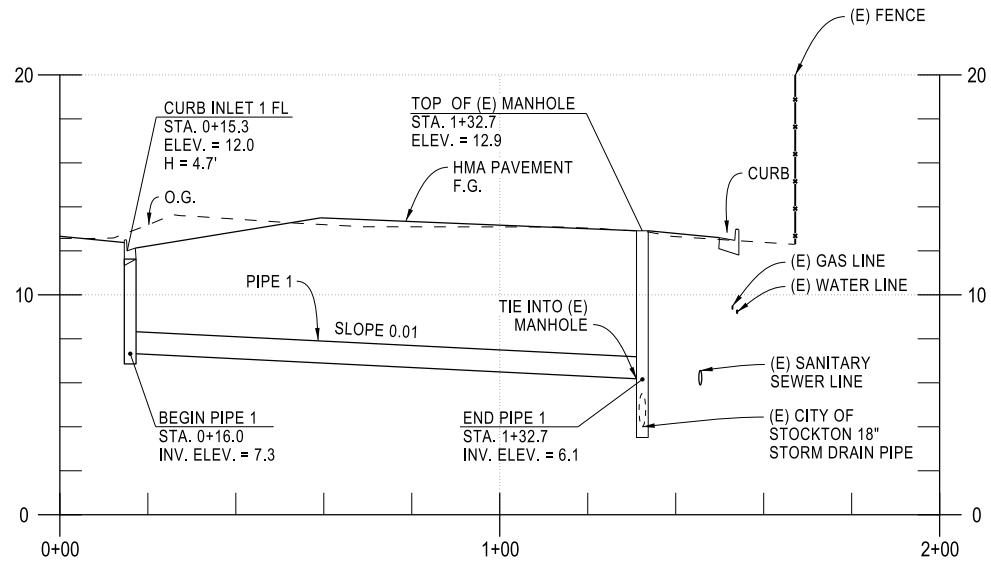
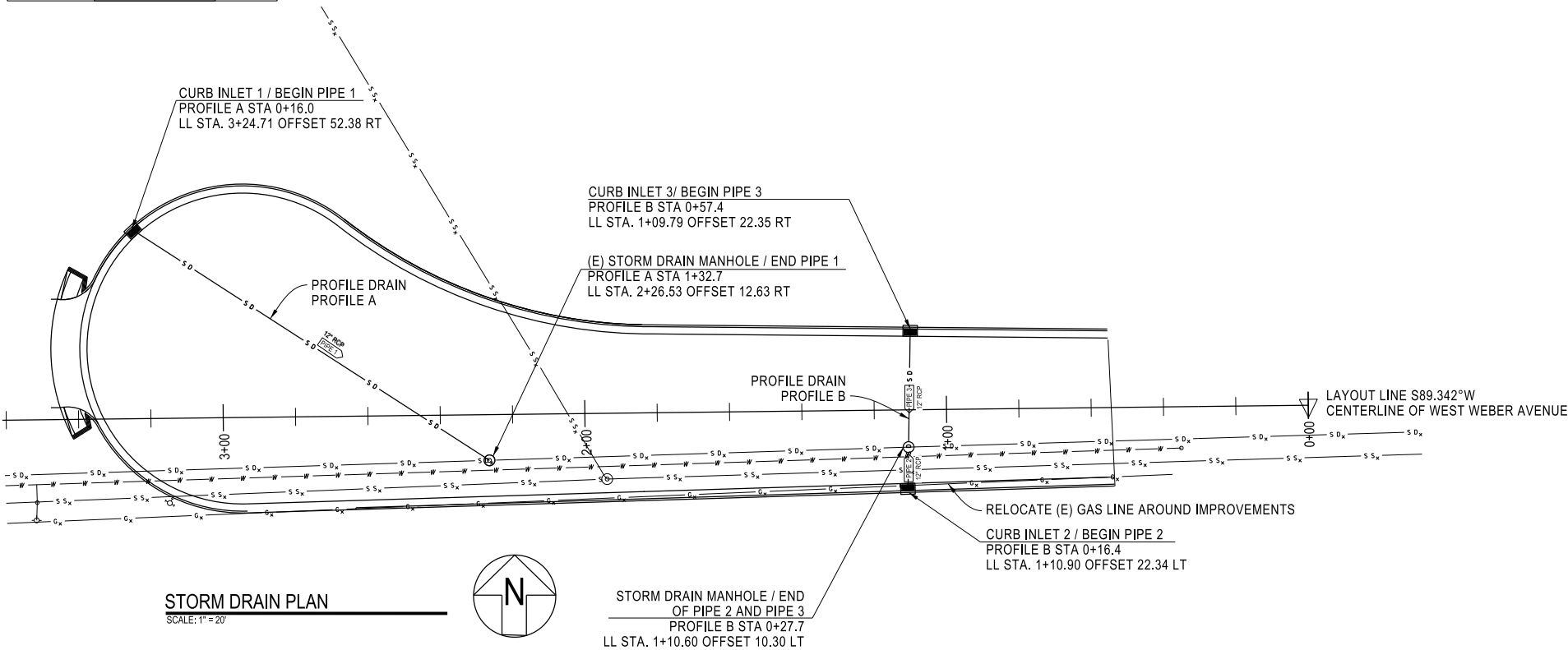
Submittal	%	Date



CUL-DE-SAC PLAN, SECTIONS AND DETAILS

PIPE SCHEDULE

PIPE	TYPE	LENGTH
1	12" RCP	120.0'
2	12" RCP	32'
3	12" RCP	12.0'



NOTES

- PIPE LENGTHS AND ELEVATIONS ARE APPROXIMATE. THE CONTRACTOR SHALL FIELD VERIFY PIPE LENGTH AND ELEVATION PRIOR TO PURCHASING MATERIALS. PIPE LENGTHS INDICATED ARE MEASURED FROM CENTER TO CENTER OF DROP INLET/MANHOLE.
- BEGIN AND END PIPE STATIONS AND INVERT ELEVATIONS ARE LOCATED AT THE CENTER OF MANHOLE OR DROP INLET.
- LOCATIONS OF CURB INLETS AND MANHOLES ARE TO THE CENTER.
- SEE CITY OF STOCKTON STANDARD PLANS DRAWING NO. 50 FOR BACKFILL REQUIREMENTS.
- CONTRACTOR SHALL VERIFY EXISTING CITY OF STOCKTON STORM DRAIN PIPE SIZE AND INVERT ELEVATION PRIOR TO INSTALLING THE MANHOLE.
- NEW MANHOLE SHALL BE TYPE 1 MAINTENANCE HOLE PER CITY OF STOCKTON STANDARD PLANS DRAWING NO. 55. NEW MANHOLE COVER AND FRAME SHALL BE PER DRAWING NO. 54.
- CURB INLETS SHALL BE TYPE 2 CURB INLET CATCH BASIN PER THE CITY OF STOCKTON STANDARD PLANS, DRAWING 80 AND 80A.

LEGEND

- EXISTING WATER (8")
- EXISTING SANITARY SEWER (8")
- EXISTING STORM DRAIN (18")
- EXISTING GAS (4")
- NEW STORM DRAIN (12")



STATE OF CALIFORNIA  
CALIFORNIA NATURAL RESOURCES AGENCY  
DEPARTMENT OF WATER RESOURCES  
DIVISION OF ENGINEERING

1416 9TH STREET, RM. 518  
SACRAMENTO, CA 95814

CUL-DE-SAC STREET IMPROVEMENT

WEST WEBER AVENUE

DEPARTMENT OF PUBLIC WORKS  
CITY OF STOCKTON, CALIFORNIA

SCALE: VARIES  
DESIGNED BY: HL  
DRAWN BY: HL  
CHECKED BY: SF  
RECORD DWG:

APPROVED BY: DATE: CITY ENGINEER STOCKTON, CALIF.

SHEET NO. 3 OF 3 SHTS PROJECT NO.



Submittal	%	Date

STORM DRAIN PLAN AND PROFILE

DATE: 03/30/16	Revisions				
	No.	Description	Date	By	App'd. By
Original Drawing Scale 0 1/2" 1"					