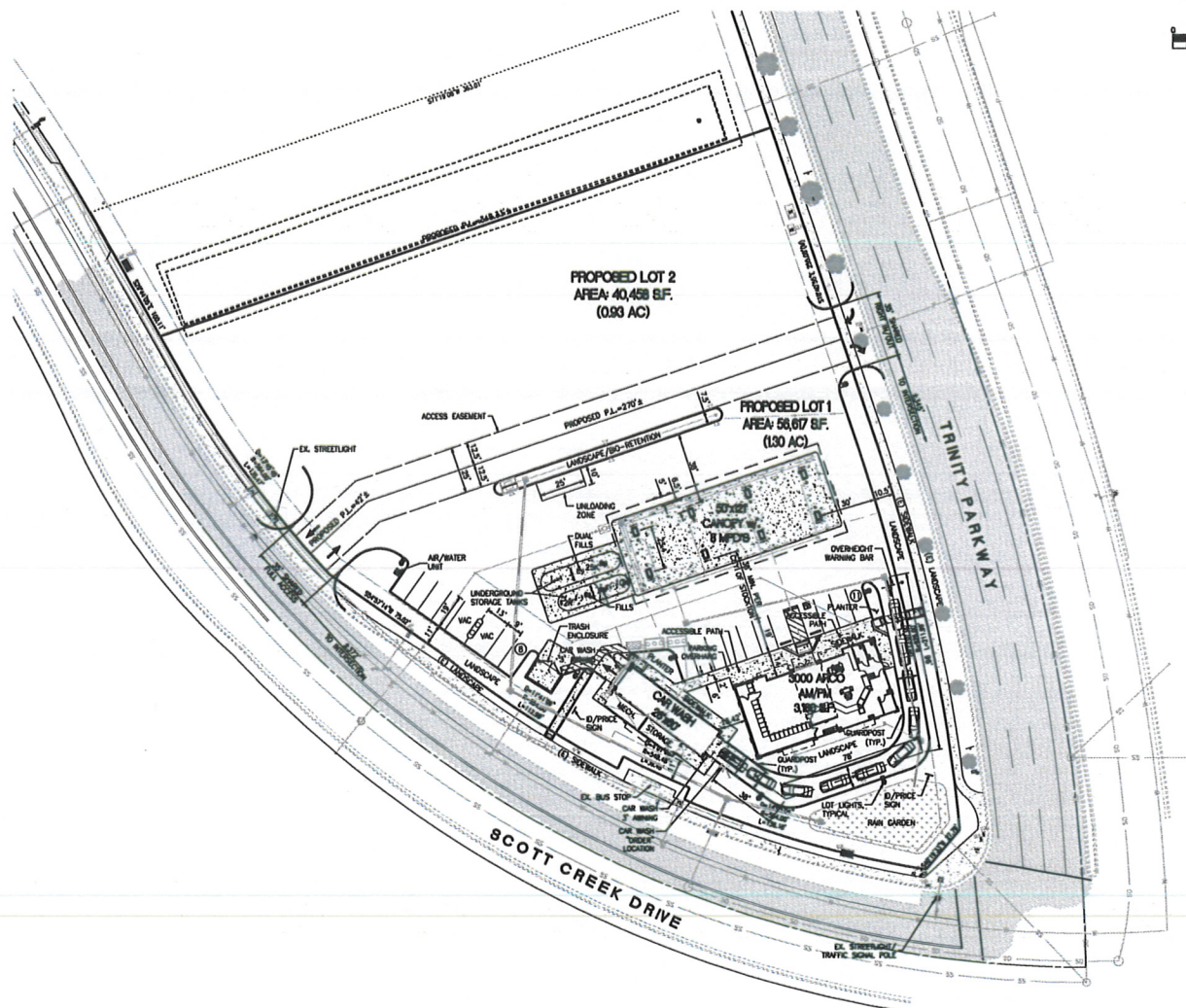


**VICINITY MAP**

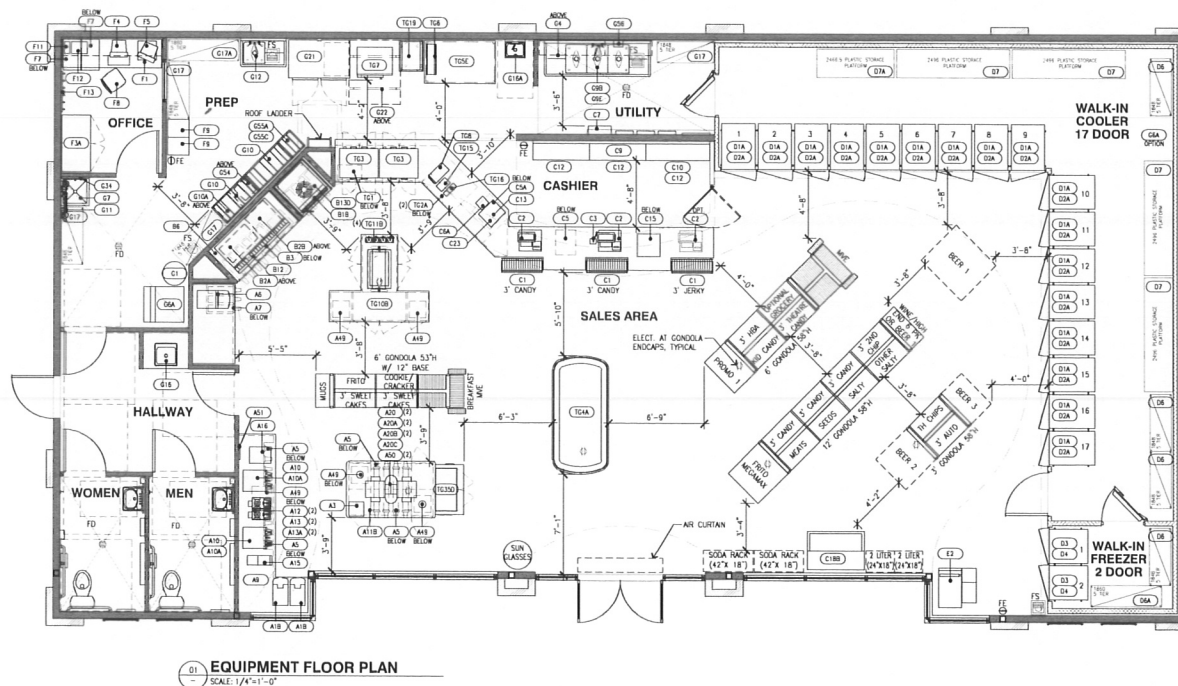


Technical drawing showing two trucks with dimensions. The left truck has a total length of 27.80, with segments of 4.00, 15.00, and 8.80. The right truck has a total length of 27.45, with segments of 11.75 and 16.45. A vertical dimension of 2.00 is shown for the right truck.

**ANY DEVIATION TO THIS PLAN NEEDS TO BE APPROVED THROUGH BP TRANSPORTATION TERMINAL MANAGER AND INCORPORATED INTO THE PERMIT DOCUMENTS. CONTACT FRANCHISEE FOR MORE DETAILS.**

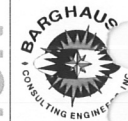
# Preliminary Not For Construction

Revised 3/21/16



Floor Plan

NOT FOR CONSTRUCTION



18715 72ND AVENUE, SOUTH  
KENT, WA 98032  
(425)251-6222  
(425)251-8092 FAX

CIVIL, ENGINEERING, LAND PLANNING,  
SURVEYING, ENVIRONMENTAL SERVICES

NO.	DATE	REVISION DESCRIPTION
1		
2		
3		
4		
5		
6		
7		
8		
9		
10		
11		
12		
13		
14		
15		
16		
17		

THIS SHEET IS  
FOR  
INFORMATION  
ONLY

DEVELOPMENT INFORMATION:  
ARCO NTI  
MODIFIED  
3000 gpm/gpm  
W/ 26'x65' CAR WASH  
FUEL CANOPY W/ 8 MPD's

SITE ADDRESS:  
TRINITY PARKWAY  
# SCOTT CREEK DRIVE  
STOCKTON, CA

FACILITY # TBD

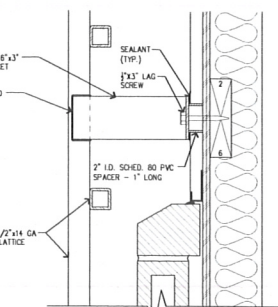
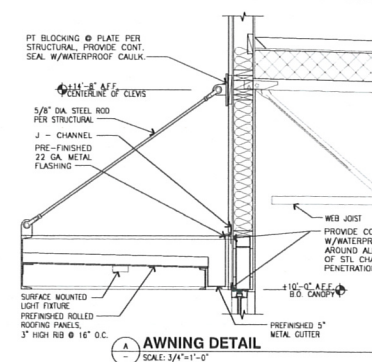
DESIGNED BY:	ALLIANCE DESIGN
DRAWN BY:	BY NEW
CHECKED BY:	ALLIANCE PM
PROJECT NO.	16700

DRAWING TITLE:  
**EQUIPMENT  
FLOOR PLAN**

SHEET NO.




**Q1.1**








**LATTICE CONNECTION DETAIL**  
SCALE: 3"=1'-0"

**COLOR LEGEND**

**P-1** DUNN EDWARDS DE6130, "WOODED ACRES"  
**P-2** DUNN EDWARDS DE6128, "SAND DUNE"  
**P-3** DUNN EDWARDS DEC756, "WEATHERED BROWN", HIGH GLOSS

## MATERIAL LEGEND

	CMU-1	CMU VENEER, TEXTURE: PRECISION COLOR: SANDSTONE MFG: ANGELLUS BLOCK CO.
	CMU-2	CMU VENEER, TEXTURE: SPLIT FACE COLOR: SPICE MFG: ANGELLUS BLOCK CO.
	CMU-3	CMU VENEER, TEXTURE: PRECISION COLOR: WARM GRAY MFG: ANGELLUS BLOCK CO.

STUCCO 3/4" CEMENT PLASTER, INSTA  
PER MFG. SPECIFICATIONS;  
TEXTURE: FINE SAND FINISH

ALUM CLEAR ANODIZED ALUMINUM

STL-1 STEEL, PAINTING

## KEYED NOTES

- 1 ALUMINUM ENTRANCE AND STOREFRONT SYSTEM
- 2 STEEL RAINING ROOF AND CLEWS, REFER TO DETAIL "A"
- 3 STEEL LATTICE, REFER TO DETAIL "B" FOR BUILDING CONNECTIONS
- 4 WALL PASTER
- 5 INTERNALLY ILLUMINATED SURFACE MOUNT WALL SIGN
- 6 WALL MOUNTED LED FIXTURE: MFR: SLV LIGHTING, MODEL: DELUXE WIDE, COLOR: SILVER GREY
- 7 WALL MOUNTED SIGN LIGHTING, MFR: SLV LIGHTING, MODEL: EXHIBIT DISPLAY QUITO R/0 LED BULB
- 8 ROOFTOP EQUIPMENT BEYOND
- 9 FAZ2 ORANGE WINDOW WITH ALUMINUM FRAME
- 10 MFR: SURFACE MOUNTED RAINING LED FIXTURE, SLV LIGHTING.

[illegible]

THIS SHEET IS  
FOR  
INFORMATION  
ONLY

DEVELOPMENT INFORMATION:

**ARCO NTI**  
**MODIFIED**  
3000 am/pm  
w/ 26'x65' CAR WASH  
FUEL CANOPY w/ 8 MPD's

TRINITY PARKWAY  
@ SCOTT CREEK DRIVE  
STOCKTON, CA

FACILITY # TBD

DESIGNED BY:	ALLIANCE ZBOW
CHECKED BY:	SP REF#:
DRAWN BY:	ALLIANCE PM:
VERSION	PROJECT NO
	16700

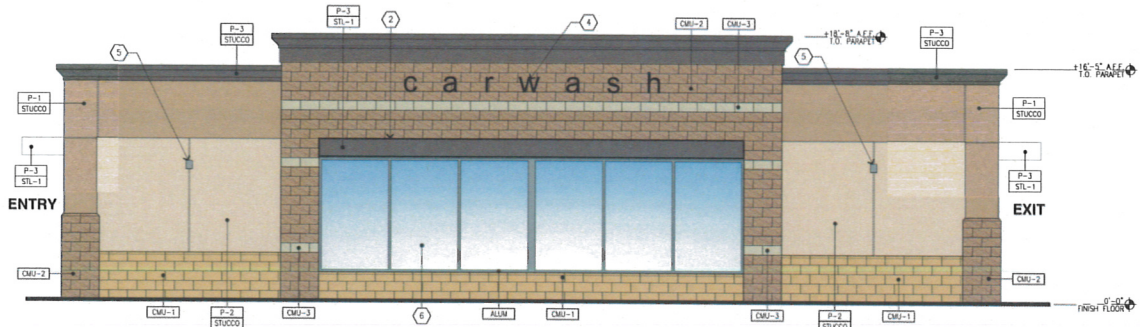
DRAWING TITLE:

**C-STORE  
ELEVATIONS**

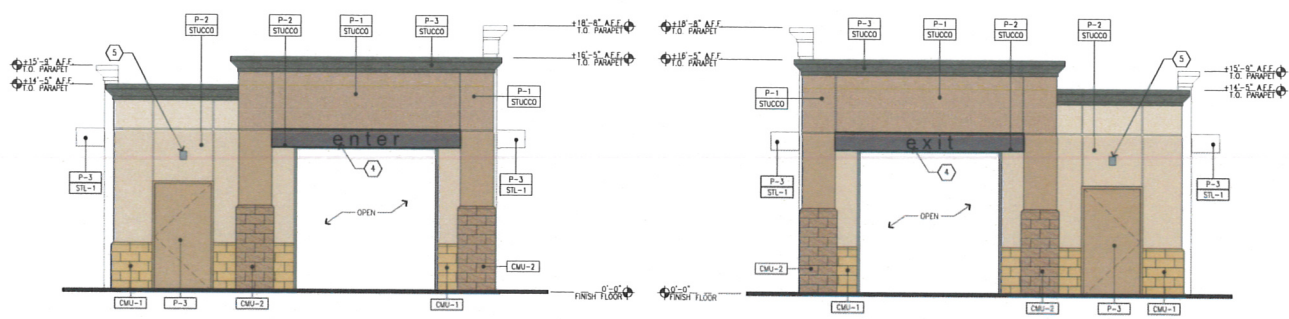
SHEET NO.

## A2.1





01 NORTH CAR WASH ELEVATION  
SCALE: 1/4"=1'-0"



02 EAST CAR WASH ELEVATION (ENTRY)  
SCALE: 1/4"=1'-0"

03 WEST CAR WASH ELEVATION (EXIT)  
SCALE: 1/4"=1'-0"



04 SOUTH CAR WASH ELEVATION (FACING SCOTT CREEK DRIVE)  
SCALE: 1/4"=1'-0"

- COLOR LEGEND**
- P-1 DUNN EDWARDS, DES130, "WOODED ACRE"
  - P-2 DUNN EDWARDS DES128, "SAND DUNE"
  - P-3 DUNN EDWARDS DEC756, "WEATHERED BROWN", HIGH GLOSS
- MATERIAL LEGEND**
- CMU-1 CMU VENEER, TEXTURE: PRECISION, COLOR: SANDSTONE, MFG: ANGELLUS BLOCK CO.
  - CMU-2 CMU VENEER, TEXTURE: SPLIT FACE, COLOR: SPICE, MFG: ANGELLUS BLOCK CO.
  - CMU-3 CMU VENEER, TEXTURE: PRECISION, COLOR: WARM GRAY, MFG: ANGELLUS BLOCK CO.
  - STUCCO 1/2" CEMENT PLASTER, INSTALLED PER MFG. SPECIFICATIONS, TEXTURE: FINE SAND FINISH
  - ALUM CLEAR ANODIZED ALUMINUM
  - STL-1 STEEL LATTICE
- KEYED NOTES**
- 1 PAUX OPAQUE WINDOW WITH ALUMINUM FRAME
  - 2 STEEL LATTICE
  - 3 STEEL LATTICE
  - 4 SURFACE MOUNTED WALL SIGN
  - 5 WALL MOUNTED LED FIXTURE
  - 6 WINDOW WITH ALUMINUM FRAME

NOT FOR CONSTRUCTION

CLIENT: **bp**

**ARCO**  
BP WEST COAST PRODUCTS LLC

**BARGHAUS**  
CONSULTING ENGINEERS, INC.

18215 72ND AVENUE SOUTH  
KENT, WA 98032  
(425)251-6222  
(425)251-8782 FAX  
CIVIL, ENGINEERING, LAND PLANNING,  
SURVEYING, ENVIRONMENTAL SERVICES

NO.	DATE	REVISION DESCRIPTION
1		
2		
3		
4		
5		
6		
7		
8		
9		
10		

SEAL:

**THIS SHEET IS FOR INFORMATION ONLY**

DEVELOPMENT INFORMATION:  
**ARCO NTI**  
**MODIFIED**  
**3000 gpm**  
**W/ 26'x65' CAR WASH**  
**FUEL CANOPY W/ 6 MPD's**

SITE ADDRESS:  
**TRINITY PARKWAY**  
**@ SCOTT CREEK DRIVE**  
**STOCKTON, CA**

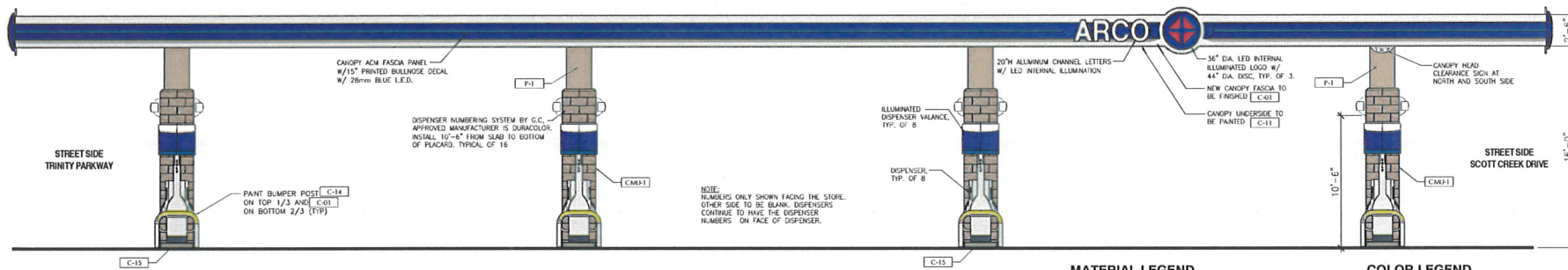
**FACILITY # TBD**

DESIGNED BY:	ALLIANCE INDM
DRAWN BY: <td>BP RETN</td>	BP RETN
CHECKED BY: <td>ALLIANCE PM</td>	ALLIANCE PM
VERSION: <td>PROJECT NO. 16700</td>	PROJECT NO. 16700

DRAWING TITLE:  
**CAR WASH ELEVATIONS**

SHEET NO:  
**CWA2.1**

Elevations



01 NORTH CANOPY ELEVATION  
- SCALE: 1/4"=1'-0"

### MATERIAL LEGEND

**CMU-1** CMU VENEER, TEXTURE: SPLIT FACE, COLOR: SPICE  
MFG: ANGELUS BLOCK CO.

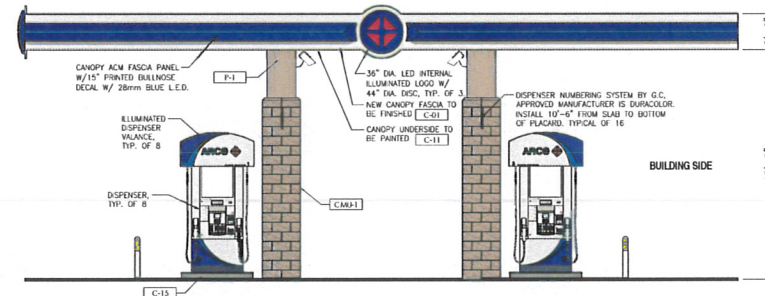
**STUCCO** 7/8" CEMENT PLASTER, INSTALLED PER MFG. SPECIF.  
TEXTURE: FINE SAND FINISH

**COLOR LEGEND**

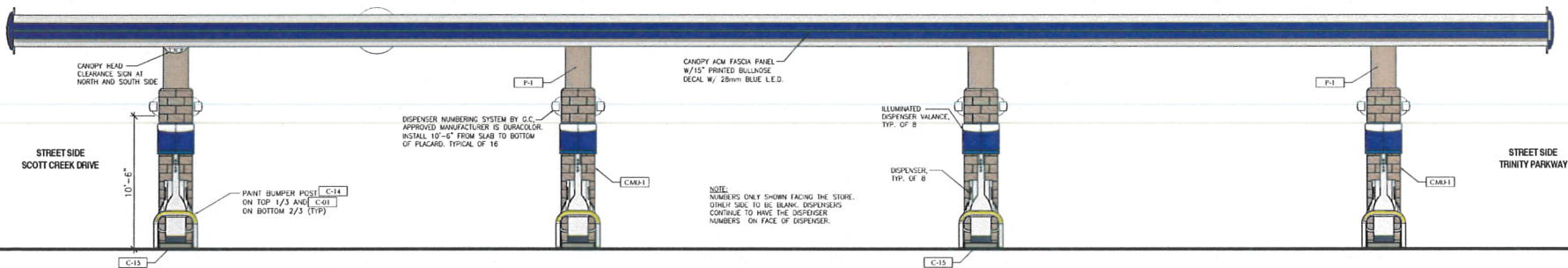
C-01	COLOR: BP PEARL - ICI PAINTS, ORDER #A0083, SPECIFY #381Y 72/117, "INDIAN LEGEND"
C-14	COLOR: BP YELLOW ICI PAINTS, ORDER #A0775 SPECIFY #371Y 61/867, "OMEGA YELLOW"
C-15	COLOR: BP WARM GREY ICI PAINTS, ORDER #A1660, SPECIFY #401Y 25/074, "GREY MOUNTAIN"
P-1	DUNN EDWARDS, DE6130, "WOODED ACRE"



**EAST CANOPY ELEVATION (FACING TRINITY PARKWAY)**  
SCALE: 1/4"=1'-0"



03 WEST CANOPY ELEVATION (FACING SCOTT CREEK DRIVE)  
- SCALE: 1/4"=1'-0"



**SOUTH CANOPY ELEVATIONS**  
SCALE: 1/4"=1'-0"  
**Elevations**

**NOTE:**  
CANOPY GRAPHICS HAS NOT BEEN APPROVED BY BP.  
PLEASE CONTACT ARCHITECT PRIOR TO ORDERING  
CANOPY GRAPHICS TO CONFIRM BP APPROVAL.

CIVIL ENGINEERING, LAND PLANNING, SURVEYING, ENVIRONMENTAL SERVICES		
NO.	DATE	REVISION DESCRIPTION
1	1-21-18	CLP SUBMITAL
2		
3		
4		
5		
6		
7		
8		
9		
10		
11		
12		
13		
14		
15		
16		
17		
18		
19		
20		
21		
22		
23		
24		
25		
26		
27		
28		
29		
30		
31		
32		
33		
34		
35		
36		
37		
38		
39		
40		
41		
42		
43		
44		
45		
46		
47		
48		
49		
50		
51		
52		
53		
54		
55		
56		
57		
58		
59		
60		
61		
62		
63		
64		
65		
66		
67		
68		
69		
70		
71		
72		
73		
74		
75		
76		
77		
78		
79		
80		
81		
82		
83		
84		
85		
86		
87		
88		
89		
90		
91		
92		
93		
94		
95		
96		
97		
98		
99		
100		

DEVELOPMENT INFORMATION:	
ARCO NTI	
MODIFIED	
3000 am/pm	
w/ 26"x65" CAR WASH	
FUEL CANOPY w/ 8 MPD's	
B/E ADDRESS:	
TRINITY PARKWAY	
@ SCOTT CREEK DRIVE	
STOCKTON, CA	
FACILITY # TBD	
DESIGNED BY:	ALWAYNE ENGR.
CHECKED BY:	PT REFIN.
DESIGN BY:	ALWAYNE ENR.
VERSION:	PROJECT NO.
1	16700
DRAWING TITLE:	
CANOPY ELEVATIONS	
SHEET NO.	

## CA2.1

# Preliminary Not For Construction

Revised 3/21/16