

**Volume 10, Issue 1**  
**City of Stockton**  
*Measure W Citizens*  
*Oversight Committee*



# Annual Report

**For the 2013-14 Fiscal Year**

## Inside this report:

Committee Chair's Message	1
Sales Tax Revenues	1
Oversight Committee	2
Review of Expenditures	2
Fire Department Message	2
Budget to Actual Expenditures	3
Police Department Message	3
Public Safety Staffing	3
Schedule of Revenues, Expenditures, and Change in Fund Balance—Audited	4

## Committee Chair's Message

The Measure W Citizens' Oversight committee is pleased to present the Fiscal Year (FY) 2013-2014 annual report. The role of the Measure W Citizens' Oversight Committee is to be the "watch dog" to ensure that the use of Measure W sales tax revenues are in compliance with the goals and plans presented and approved by the voters in 2004. Citizens' oversight committees, like this Measure W Citizens' Oversight Committee, are an integral part of nearly all voter approved sales tax ordinances in the United States and are an effective tool to increase oversight. In addition to the Ordinance no. 038-04C.S., the program guidelines for Measure W also prescribe a second method of oversight which is an independent audit by a CPA firm. The CPA firm issued a "clean report" for FY 2013-2014 stating that the financial schedules for Measure W fairly depicted revenues and expenditures.

Though the original hiring goal for Fire and Police positions funded by Measure W revenue projections have not yet been achieved, both the Fire and Police Department have reported to the committee that there remains a critical need for these positions. As proof of proper stewardship, financial documents presented to the committee confirmed that the cost of the full-time positions created were commensurate with the Measure W sales tax being collected by the City. Our hope is that as tax collections increase due to the improving local economy, Stockton will be able to increase hiring and have more boots on the ground to fight crime and improve public safety.

At the end of this 10<sup>th</sup> year for Measure W, I am pleased with the results and would like to extend my appreciation to all stakeholders of Measure W for their extraordinary support. Lastly, the committee would like to acknowledge the good work by City staff for improving the timeliness of its financial reporting and audits. Stockton has a bright future when we work corroboratively and think creatively about the challenges that lie ahead.

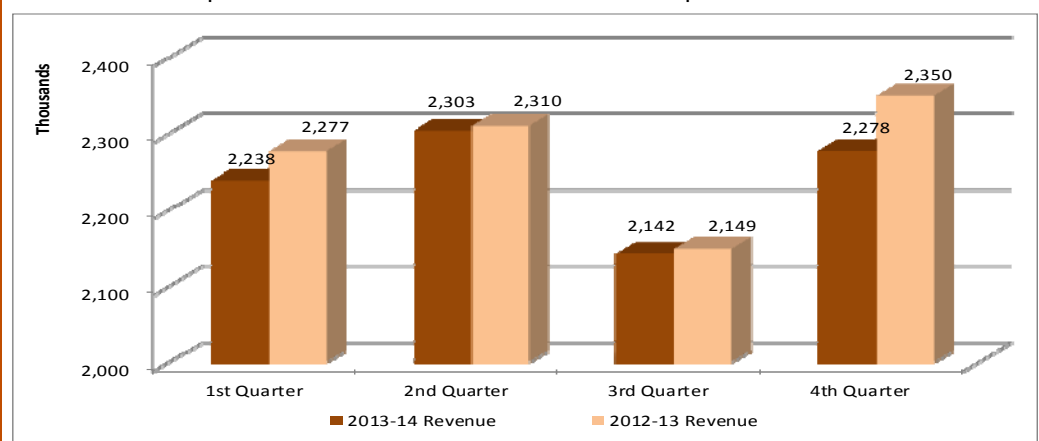
**Phillip Herrera, Committee Chair**

## Committee Members

Phillip Herrera (Chair)  
 John Sola, Sr. (Vice Chair)  
 Paul Cavanaugh  
 Marcos Glaros  
 Tracie Glaves  
 Michele Kimbrough  
 Dwight Williams

## Sales Tax Quarterly Revenues Collection

Below Measure W sales tax revenue for FY 2012-13 and FY 2013-14 are compared by quarter. FY 2012-13 revenues showed a slow recovery. In FY 2013-14 however, the revenues show a slight decline (1.4%) from the prior year. Revenues are split 50% for Police and 50% for Fire Departments.



## Citizen Comments

Learn more about

**Measure W:**

General Information:  
 (209) 937-7177

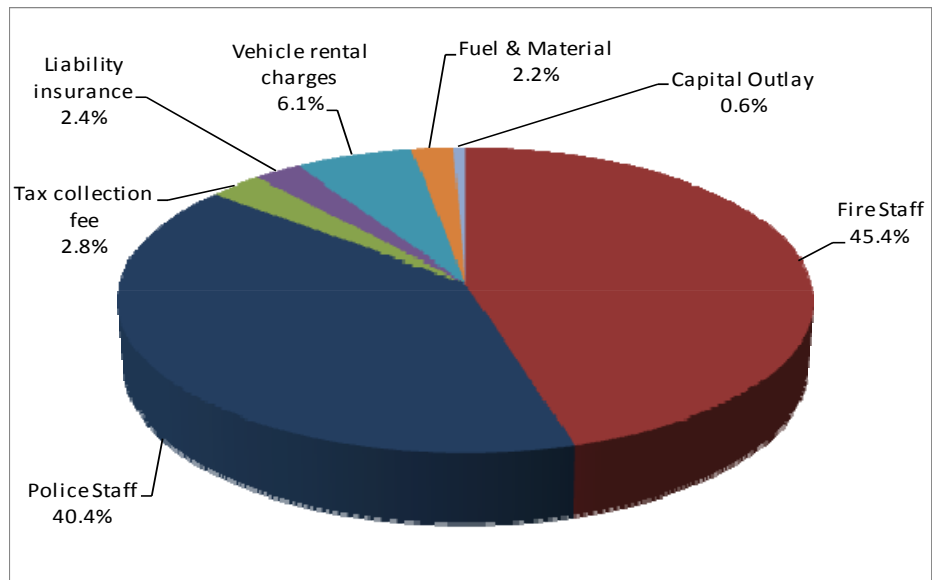
Police: (209) 937-8377  
 Fire: (209) 937-8801

## Oversight Committee Review of Expenditures

Measure W expenditures are limited by the amount of revenue received in any given year from the Safe Neighborhood Measure W tax proceeds. In FY 2013-14, the budget included public safety staff of 23 Police Officers and 25 Firefighters. Although these positions are critical to maintaining service levels, two firefighter positions continued to be unfilled during the year leaving funded positions at 23 police officers and 23 fire fighters. The funds made available from the two vacancies along with prior year surplus in the fire program will be utilized in FY 2014-15 to purchase a much needed fire engine. The FY 2013-14 approved Measure W budget appropriated \$8,511,119 on June 25, 2013. Of this total allocation, only \$8,264,837 was expended during the fiscal year.

The expenditures for salary and benefit costs of Police and Fire personnel performing Measure W duties was 85.85% of the total expenditures. Vehicles and fuel and accounted for 7.81% of the total. The remaining 6.33% paid

for Board of Equalization tax collection fees, insurance, materials, sales tax review services and capital equipment purchases. Both the Police and Fire Departments remained under budget in their use of Measure W funds.



## Fire Department Message

Measure W funds collected in FY 2013-14 continued to augment staffing for Fire Engine No. 13, Ladder Truck No. 7 and Ladder Truck No. 3, funded salaries and benefits of firefighters, and maintenance and operation of one fire engine. The three fire companies responded to a total of 3,666 incidents, with Engine 13 responding to 1,445, Truck 7 responding to 1,158, and Truck 3 responding to 1,063.



In FY 2013-14, City Council approved funding for the Alternative Response Program (Squad). This program is a new service which involves a smaller vehicle and a two-person crew that responds to lower priority medical and small fire calls. The Squad requires two new firefighter positions, increasing the total number of positions funded by Measure W from 23 to 25 firefighter positions. Funds were also used to

initiate procurement of a 1-Ton rescue vehicle and other tools and equipment for the program.

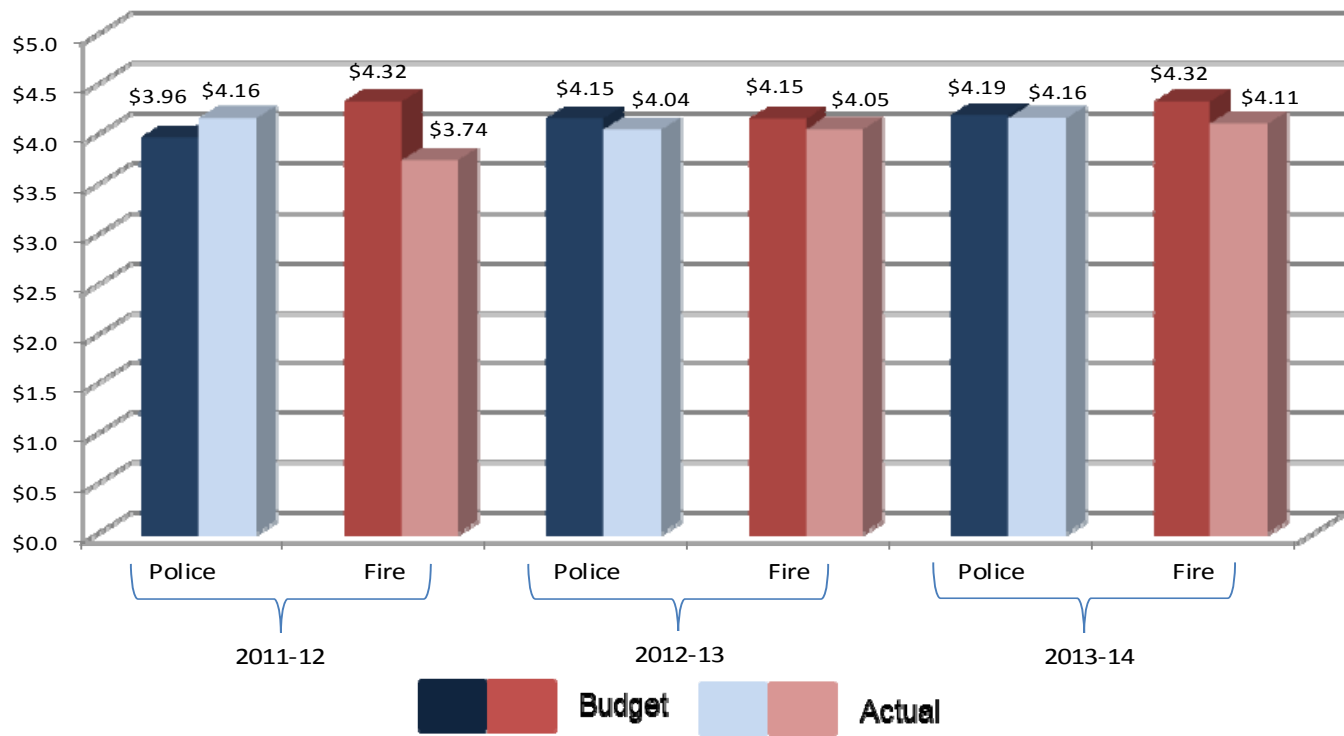
Jeff Piechura, Fire Chief

### 2014 Fire Incident Responses

Apparatus	Fires	Medical	Vehicle	Accident / Rescue	Hazmat / Other	Total
Engine 13	277	1000	74	23	71	1,445
Truck 3	536	277	108	87	55	1,063
Truck 7	356	441	86	119	156	1,158

## Measure W – Budget to Actual Expenditures FY 2011-12 to FY 2013-14

(Amounts in Millions)



### Police Department Message

In FY 2013-14 Measure W funding paid for 23 Police Officers to respond to over 24,400 calls for service, an average of 1,064 per officer during the year. This funding source is an important component of the Police Department's annual operating budget. It pays not only for salary and benefits for those officers, but also for their vehicles, fuel, radios, and other safety equipment necessary to work in the field. The amount of tax revenue available and the cost of the positions determines the exact number of funded Police Officers year-to-year. All Measure W positions are assigned to the Field Services Division and handle dispatched calls-for-service on a 24/7 basis. In FY 2013-14, the Police Department handled 385,066 calls for service, 119,187 of which were dispatched for officer assistance.



Eric Jones, Police Chief

### Public Safety Measure W Staffing – Annual Averages

	2008-09	2009-10	2010-11	2011-12	2012-13	2013-14
Police	39	21	25	24	22	23
Fire	27	20	23	22	23	23

## Schedule of Revenues, Expenditures, and Change in Fund Balance 2013-14

The annual independent audit was conducted by Pun & McGeedy LLP who issued their report dated December 31, 2014. The *Schedule of Revenues, Expenditures and Change in Fund Balance-Measure W Public Safety Tax Fund for the year ended June 30, 2014* is presented below:

	Police	Fire	Total
<b>Revenues:</b>			
Sales tax - Measure W	\$4,480,832	\$4,480,831	\$8,961,663
Interest income	6,150	7,178	13,328
Refunds and reimbursements	10	11	21
Total revenues	4,486,992	4,488,020	8,975,012
<b>Expenditures - Public Safety:</b>			
Payroll:			
Salaries	1,927,112	2,192,165	4,119,277
Benefits	1,412,574	1,563,916	2,976,490
Sub-total	3,339,686	3,756,081	7,095,767
Products and Services Purchased:			
Tax collection fee	109,245	109,245	218,490
Sales tax review services	7,654	7,654	15,308
Liability insurance	92,820	108,074	200,894
Vehicle rental charges	448,982	54,314	503,296
Materials and services	26,180	11,885	38,065
Fuel charges	134,732	7,495	142,227
Capital Outlay/equipment	-	50,790	50,790
Sub-total	819,613	349,457	1,169,070
Total Expenditures	4,159,299	4,105,538	8,264,837
Net Change in Fund Balance	327,693	382,482	710,175
Fund Balance, Beginning of the Year	1,017,426	1,263,607	2,281,033
Fund Balance, End of the Year	\$1,345,119	\$1,646,089	\$2,991,208

Source: Independent Auditor's Reports and Financial Schedule for the year ended June 30, 2014