

NOTES

- [illegible]

LEGAL DESCRIPTION

ALL THAT CERTAIN REAL PROPERTY SITUATE IN THE CITY OF STOCKTON,
COUNTY OF SAN JOAQUIN, STATE OF CALIFORNIA, DESCRIBED AS FOLLOWS:

FILED AS A TESTING EXAMINE MAP THIS _____ DAY OF _____, 20____
FEE: _____

CITY OF STOCKTON PLANNING COMMISSION
APPROVED BY THE CITY OF STOCKTON PLANNING COMMISSION
THIS _____ DAY OF _____, 20____

CHAIRMAN
APPROVED BY THE CITY COUNCIL OF THE CITY OF STOCKTON
THIS _____ DAY OF _____, 20____

CITY ENGINEER

APPROVED BY THE CITY ENGINEER OF THE CITY OF STOCKTON
THIS _____ DAY OF _____, 20__

CITY ENGINEER

CITY OF STOCKTON BENCHMARK NO. 327, A SAN JOAQUIN COUNTY BRASS DISK STAMPED "0-27.4" IN THE NORTHWEST CORNER OF BRIDGE NO. 1047 ON AUSTIN ROAD, APPROXIMATELY 580 FEET NORTH OF ARCH ROAD, ELEVATION=43.54 FEET. (CITY OF STOCKTON 1996 ADJUSTED) NOV029.

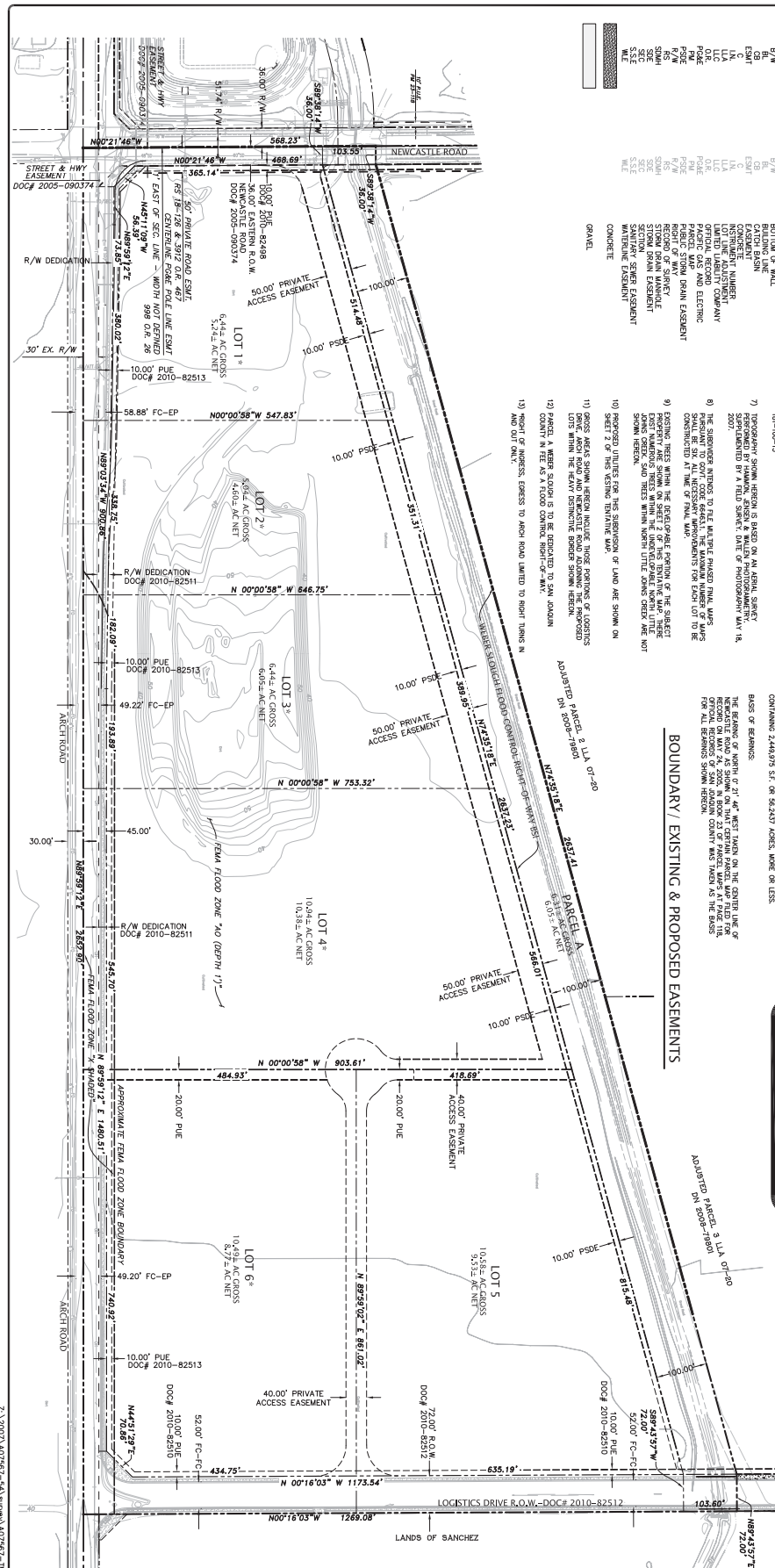
NO.	REVISION	BY	NO.	REVISION	BY
△			△		
△			△		
△			△		
△			△		
△			△		



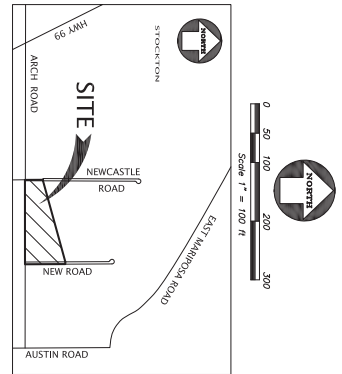
KIER & WRIGHT
CIVIL ENGINEERS & SURVEYORS, INC.
2850 Collier Canyon Road (925) 245-8788
Livermore, California 94551 Fax (925) 245-8796

VESTING TENTATIVE MAP TRACT NO. 3732
WITH PHASED FINAL MAPS
BEING A RESUBDIVISION OF ADJUSTED PARCEL 1 LLA 07-20 RECORDED
MAY 14, 2008 AS DOCUMENT
NO. 2008-79801 SAN JOAQUIN COUNTY RECORDS

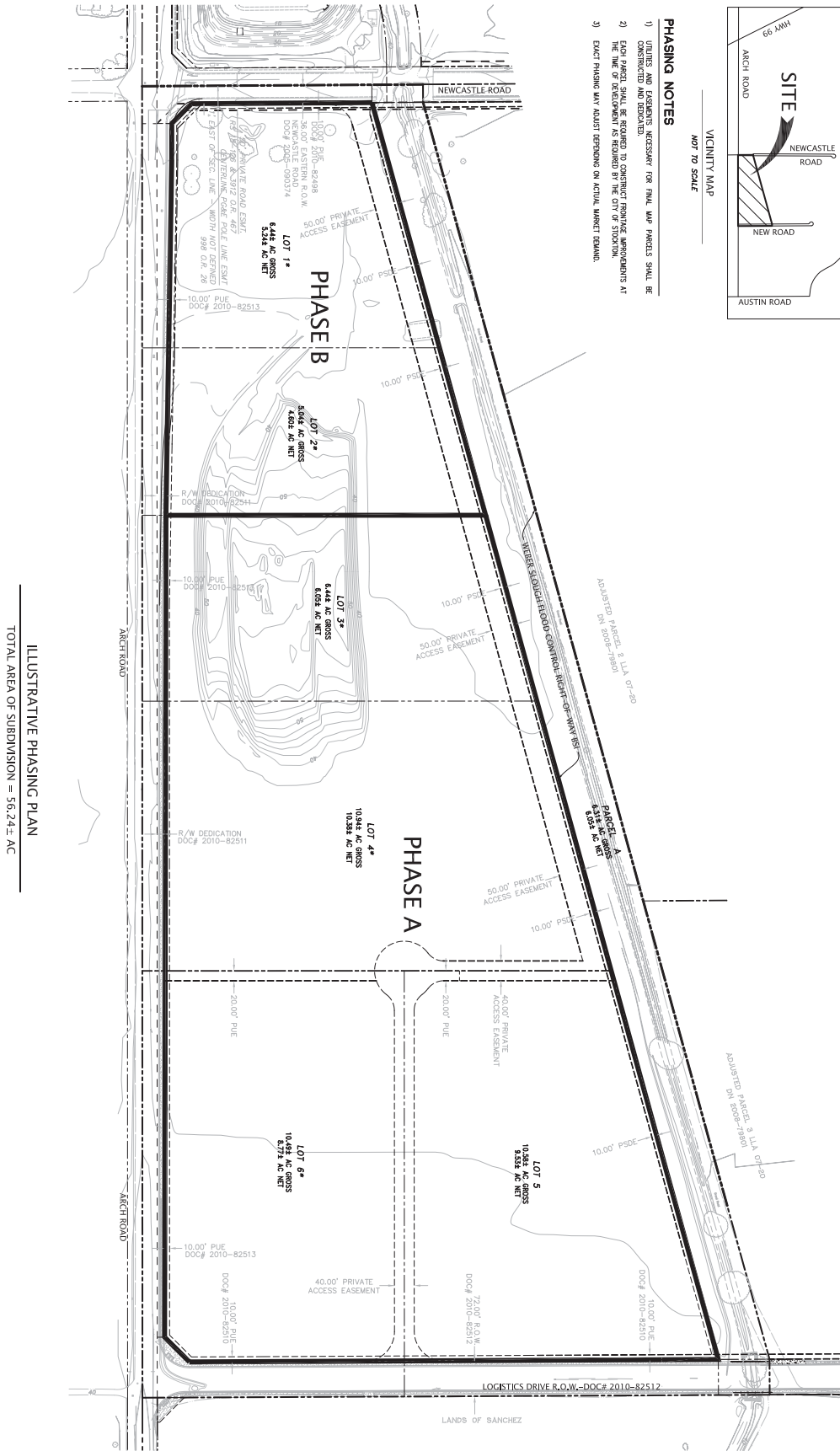
Z:\2007\A07567-54\survey\A07567-TM SOUTH.dwg 11/3/2012 12:48:57 PM PDT







- PHASING NOTES**
- 1) UTILITIES AND EASEMENTS NECESSARY FOR FINAL MAP PHASES SHALL BE CONSTRUCTED AND LOCATED.
 - 2) EACH PHASE SHALL BE REQUIRED TO CONSTRUCT EASEMENT IMPROVEMENTS AT THE TIME OF DEVELOPMENT AS REQUIRED BY THE CITY OF STOCKTON.
 - 3) EXACT PHASING MAY ADJUST DEPENDENT ON ACTUAL MARKET DEMAND.



VESTING TENTATIVE MAP TRACT NO. 3732
WITH PHASED FINAL MAPS
BEING A RESUBDIVISION OF ADJUSTED PARCEL 1 LLA 07-20 RECORDED
MAY 14, 2008 AS DOCUMENT
NO. 2008-79801 SAN JOAQUIN COUNTY RECORDS
STOCKTON CALIFORNIA



KIER & WRIGHT
CIVIL ENGINEERS & SURVEYORS, INC.
1233 Quarry Lane, Suite 145
Pleasanton, California 94566
(925) 249-6555
Fax (925) 249-6563

NO.	REVISION	BY	NO.	REVISION	BY
1			1		
2			2		
3			3		
4			4		
5			5		
6			6		
7			7		
8			8		
9			9		
10			10		