

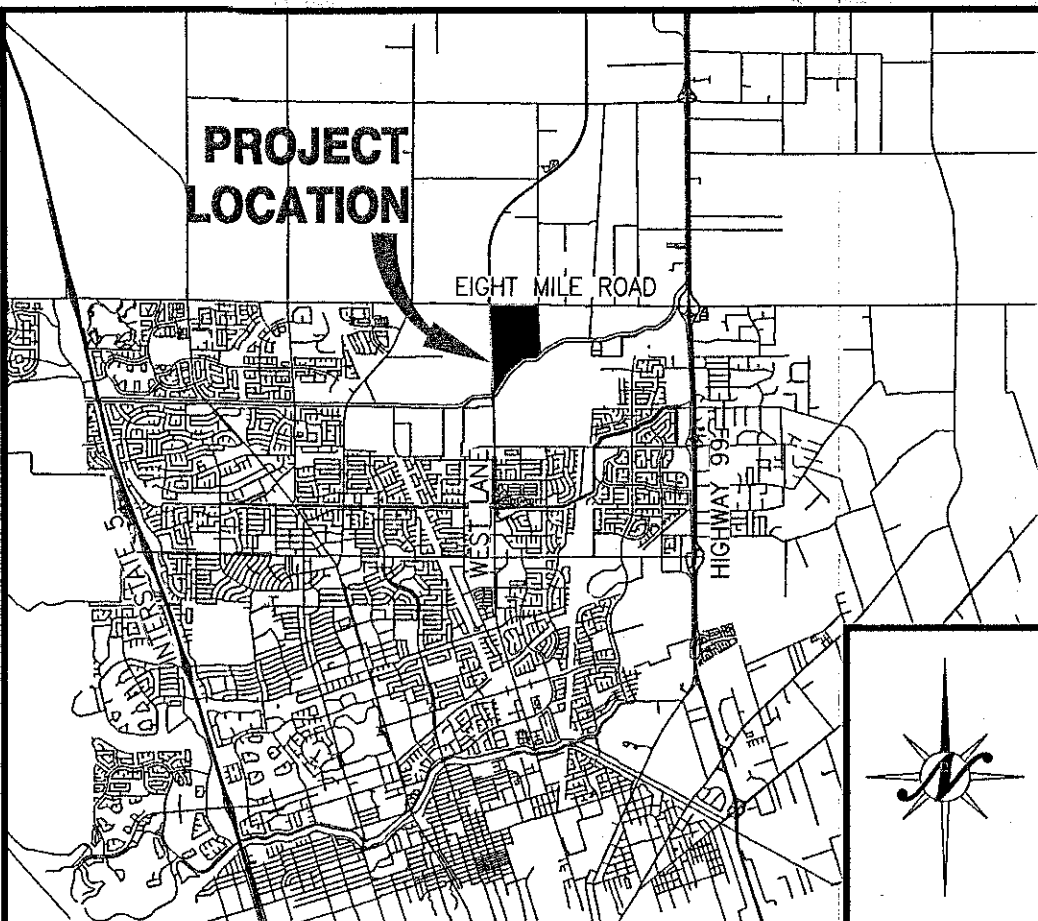
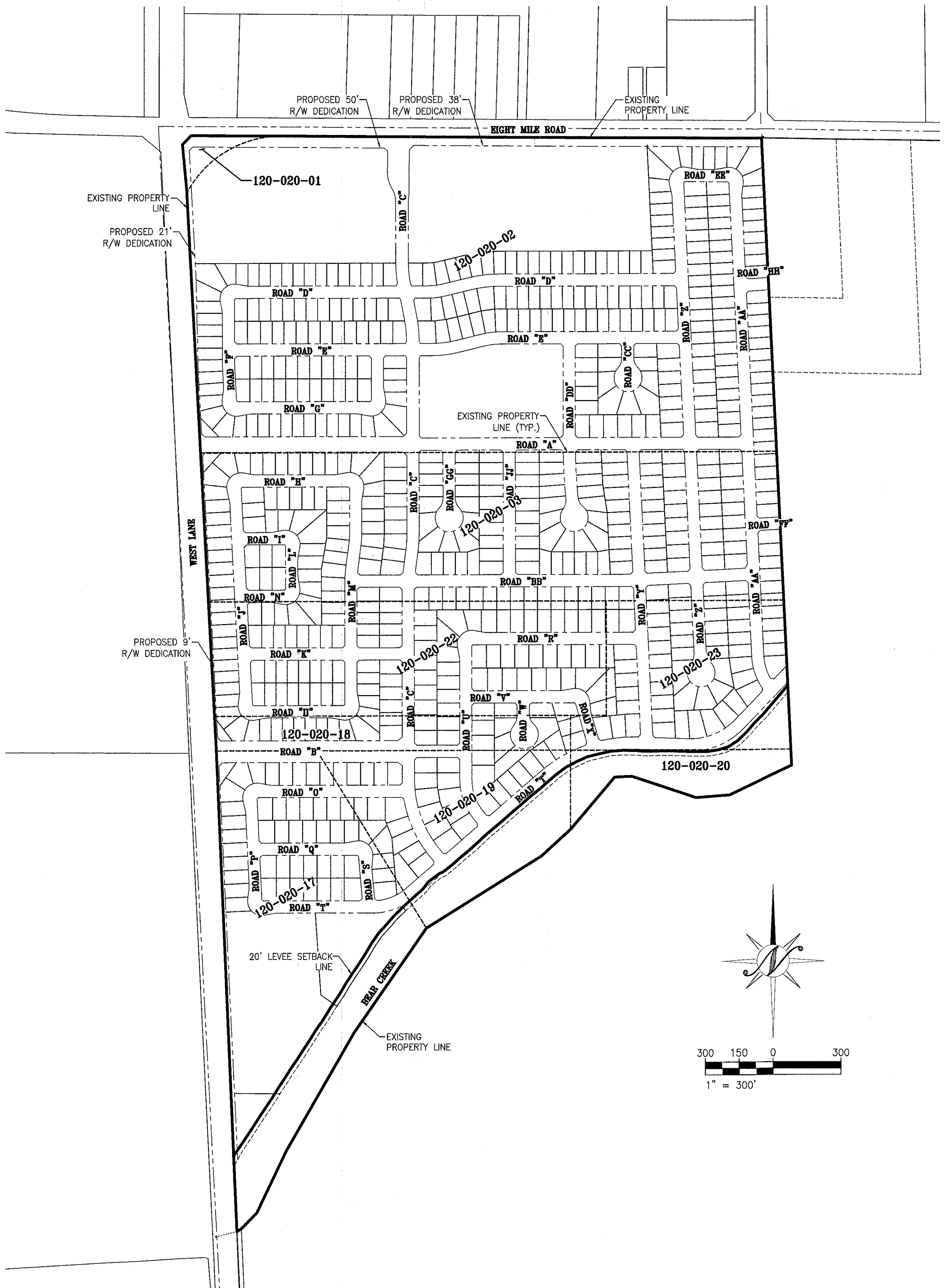
TRA VIGNE WEST SUBDIVISION  
VESTING TENTATIVE SUBDIVISION MAP  
STOCKTON, CALIFORNIA

GENERAL NOTES

1. ALL IMPROVEMENTS SHALL BE CONSTRUCTED AS PER THE CITY OF STOCKTON STANDARD PLANS AND SPECIFICATIONS, EXCEPT AS NOTED.
2. STORM DRAINAGE: BY POSITIVE SYSTEM DISCHARGE TO AN ON-SITE STORM DRAINAGE BASIN AND PUMP STATION. THE PROPOSED SYSTEM WILL DISCHARGE TO BEAR CREEK. ALL IMPROVEMENTS TO BE CONSTRUCTED TO THE CITY OF STOCKTON STANDARDS.
3. SEWAGE DISPOSAL: BY CITY OF STOCKTON SEWER SYSTEM.
4. WATER SUPPLY: BY CITY OF STOCKTON WATER SYSTEM.
5. STREET LIGHTING SHALL BE INSTALLED AS PER THE CITY OF STOCKTON.
6. ASSESSORS PARCEL Nos. 120-020-001 THRU 003, 120-020-017 THRU 020, 120-020-022, AND 023.
7. LEGAL DESCRIPTION: ALL THAT CERTAIN REAL PROPERTY SITUATE IN THE UNINCORPORATED, COUNTY OF SAN JOAQUIN, STATE OF CALIFORNIA, BEING A PORTION OF SECTION 2, TOWNSHIP 2 NORTH, RANGE 6 EAST, MOUNT DIABLO BASE AND MERIDIAN.
8. PUBLIC UTILITIES ARE TO BE INSTALLED UNDER GROUND IN EASEMENTS.
9. THE SUBDIVIDER HEREBY RESERVES THE RIGHT TO FILE "MULTIPLE SUBDIVISION MAPS" AS SET FORTH BY THE SUBDIVISION MAP ACT, ARTICLE 4, SECTION 66456.1, AND FILE PARCEL MAPS FOR REASON OF SALE. ALL PARCEL LINES SHALL CONFORM TO THIS TENTATIVE MAP.
10. PURSUANT TO SECTION 66452.6 OF THE "SUBDIVISION MAP ACT", THE TERM OF THIS MAP MAY EXTEND 10 YEARS.
11. PUBLIC UTILITY EASEMENTS WILL BE PROVIDED ALONG ALL STREET FRONTAGE.
12. BUILDING SETBACKS WILL BE AS PER CITY OF STOCKTON STANDARDS.
13. ALL EXISTING STRUCTURES AND TREES ARE TO BE REMOVED. SEPTIC TANKS, LEACH FIELDS, AND WELLS ON SITE WILL BE REMOVED OR ABANDONED AS PER CITY OF STOCKTON REQUIREMENTS.
14. ALL OFF-SITE IMPROVEMENTS ALONG WEST LANE AND EIGHT MILE ROAD TO BE CONSTRUCTED IN ACCORDANCE WITH THE APPROVED PRELIMINARY ROADWAY PLAN PREPARED BY NORTHSTAR ENGINEERING GROUP, INC. AND THE REQUIREMENTS SET FORTH IN THE APPROVED TRAFFIC STUDY.

LEGEND

	EXISTING	PROPOSED
BOUNDARY LINE		
CENTERLINE		
RIGHT-OF-WAY		
PARCEL LINE		N/A
CURB AND GUTTER	N/A	
EDGE OF PAVEMENT		
STORM DRAIN (MAIN)	12" SD	12" SD
FORCE MAIN	8" FM	8" FM
DRAINAGE SWALE		
STORM DRAIN MAINTENANCE HOLE		
CURB INLET		
DIRT ROAD		N/A
WATER (MAIN)	8" W	8" W
WATER VALVE		
FIRE HYDRANT		
SEWER MAINTENANCE HOLE		
SEWER (MAIN)	12" SS	12" SS
OVER HEAD ELECTRICAL		N/A
GAS LINE		N/A
CENTERLINE ELEVATION	68.34 CL	68.34 CL
ORIGINAL GROUND	108.42	N/A
DIRECTION OF FLOW	0.003	0.003
CONTOURS	32	32
WALL (SEE LABEL FOR TYPE)		
FENCE (CHAINLINK OR VINYL)		
FENCE (WIRE OR HOGWIRE)		
FENCE (WOOD OR WROUGHT IRON)		
TREE OR SHRUB/TO BE REMOVED		N/A
IRRIGATION LINE	18" IRR	18" IRR
IRRIGATION VALVE		N/A
IRRIGATION PRESSURE MANHOLE/VENT		
SIGN		
SERVICE POLE		N/A



VICINITY MAP  
NOT TO SCALE

SHEET INDEX

1	TM1.1	COVER SHEET
2	TM1.2	KEY SHEET AND TYPICAL CROSS-SECTIONS
3	TM2.1	TOPOGRAPHY SHEET
4	TM2.2	TOPOGRAPHY SHEET
5	TM3.1	DIMENSION AND PRELIMINARY GRADING PLAN
6	TM3.2	DIMENSION AND PRELIMINARY GRADING PLAN
7	TM4.1	PRELIMINARY UTILITY PLAN
8	TM4.2	PRELIMINARY UTILITY PLAN
9	TM5.1	PRELIMINARY PHASING AND MAJOR OFF-SITE INFRASTRUCTURE
10	TM5.2	ALTERNATE PROJECT LAYOUT
11	TM5.3	TRAFFIC CALMING PLAN

PROJECT INFORMATION

A. REGULATORY AGENCY:	CITY OF STOCKTON 425 N. EL DORADO STREET STOCKTON, CA 95202 CONTACT: MIKE MC DOWELL
B. OWNER/APPLICANT:	JOHN TOMASELLO 18958 LOUIS ROAD GRASS VALLEY, CA 95945 T: (530) 208-8482
C. ENGINEER:	NORTHSTAR ENGINEERING GROUP, INC. 620 12th STREET MODESTO CA, 95354 T: (209) 524-3525 F: (209) 524-3526 CONTACT: TONY DE MELO
D. EXISTING LAND USE/ZONING:	VACANT LOT - ORCHARD/ AU-20
E. PROPOSED LAND USE/ZONING:	RESIDENTIAL, LOW DENSITY - RL
F. TOTAL PROJECT SIZE:	200.16 ACRES (185.5 RESIDENTIAL)
G. TOTAL NUMBER OF LOTS:	747
H. DENSITY:	4.0 UPA
I. CONTOURS:	1' AND ONE HALF' CONTOUR INTERVALS, SURVEYED ON APRIL 1st, 2015.
J. RETURNS:	PER CITY OF STOCKTON STANDARD DETAILS R63 AND R64.

CITY COUNCIL APPROVAL

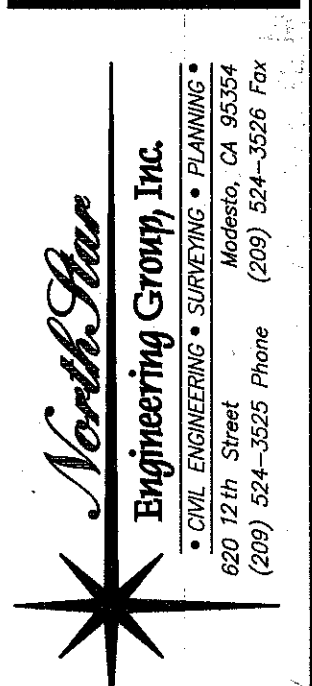
FILED AS A TENTATIVE MAP THIS 31<sup>ST</sup> DAY OF January 2020.  
FEE \$  
  
APPROVED BY THE CITY ENGINEER OF THE CITY OF STOCKTON THIS 09 DAY OF August 2020.  
  
APPROVED BY THE STOCKTON CITY COUNCIL BY RESOLUTION NO. 2020-06-23-1502-03 THIS 23RD DAY OF JUNE, 2020.

COPYRIGHT © 2020 NORTHSTAR ENGINEERING GROUP, INC.



NO.	DATE	APPROVED	REVISIONS
			DESCRIPTIONS

COVER SHEET  
VESTING TENTATIVE SUBDIVISION MAP  
TRA VIGNE WEST  
STOCKTON, CALIFORNIA

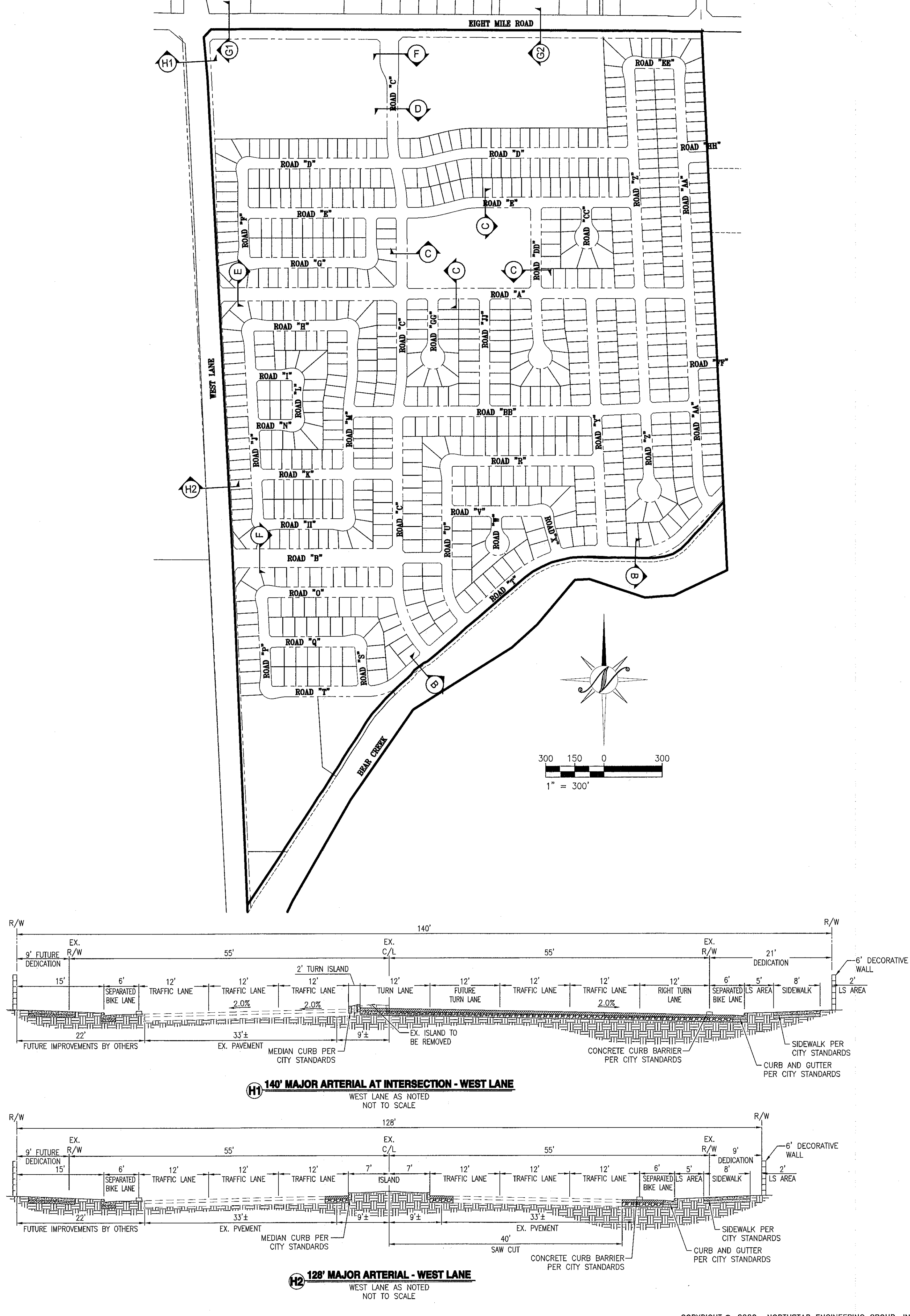


JOB #:	15-1532
DATE:	06/23/2020
SCALE:	AS SHOWN
DRAWN:	TBA/PMH
DESIGN:	PMH/CV/KM
CHK'D:	TFD

SHEET  
NUMBER

TM 1.1

TM P16-0052





[illegible]

**TOPOGRAPHY SHEET**

**VESTING TENTATIVE SUBDIVISION MAP**

**TRA VIGNE WEST**

**STOCKTON, CALIFORNIA**

*North Star*  
Engineering Group, Inc.  
• CIVIL ENGINEERING • SURVEYING • PLANNING •  
620 12th Street  
(209) 524-3525 Phone (209) 524-3526 Fax  
Modesto, CA 95354

B #:	15-1532
TE:	01/31/2020
SALE:	AS SHOWN
AWN:	TBA/PMH
SIGN:	PMH/CV/KM
K'D:	TPD

SHEET  
NUMBER

## TM 2.1





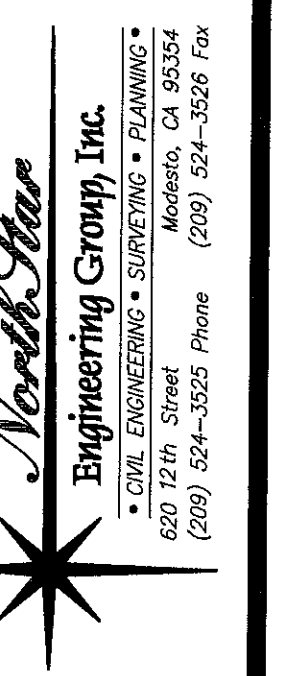
[illegible]

**TOPOGRAPHY SHEET**

**VESTING TENTATIVE SUBDIVISION MAP**

**TRA VIGNE WEST**

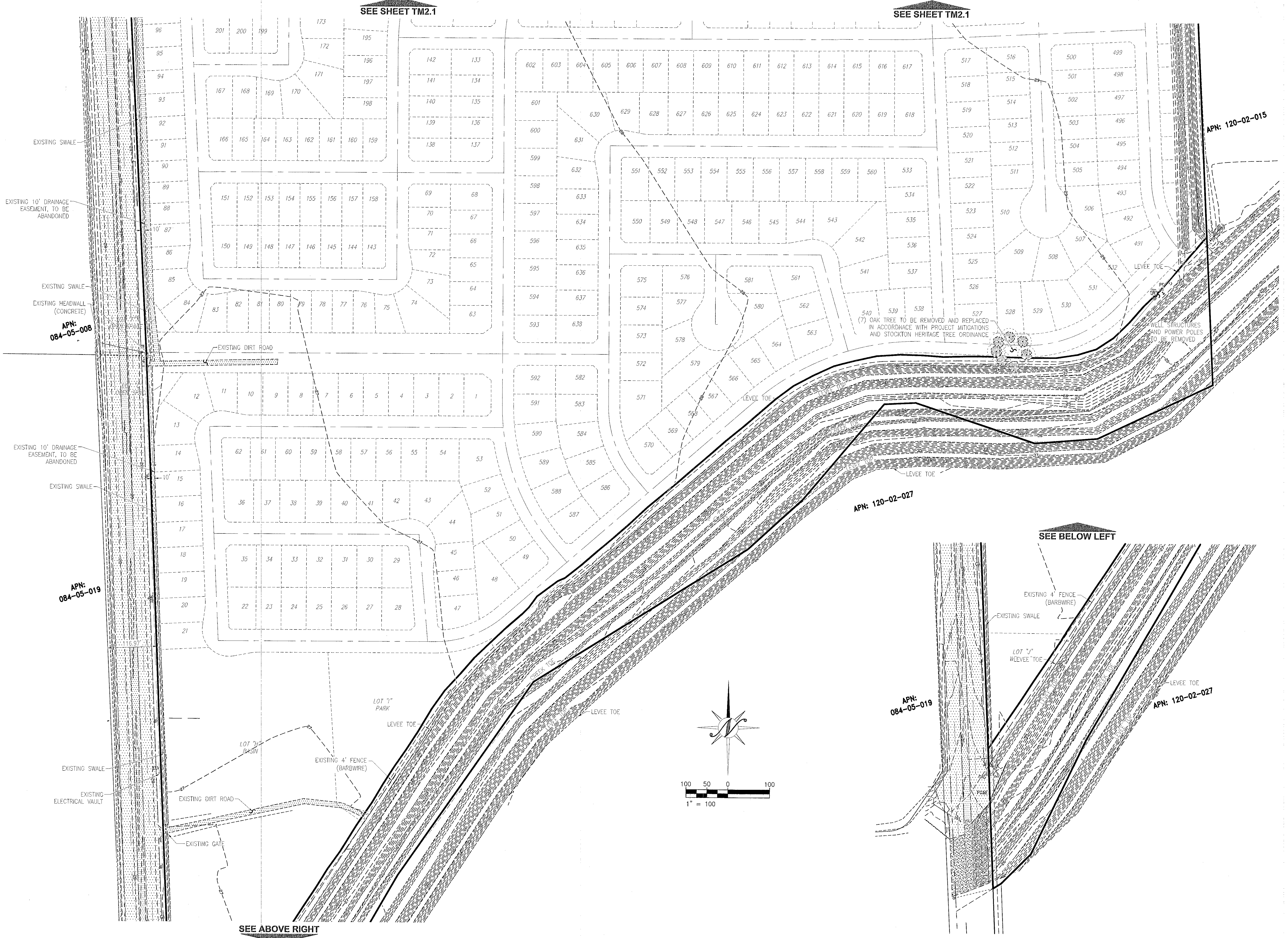
**STOCKTON, CALIFORNIA**



#:	15-1532
:	01/31/2020
E:	AS SHOWN
WN:	TBA/PMH
GN:	PMH/CV/KM
D:	TPD

SHEET  
NUMBER

## TM 2.2





[illegible]

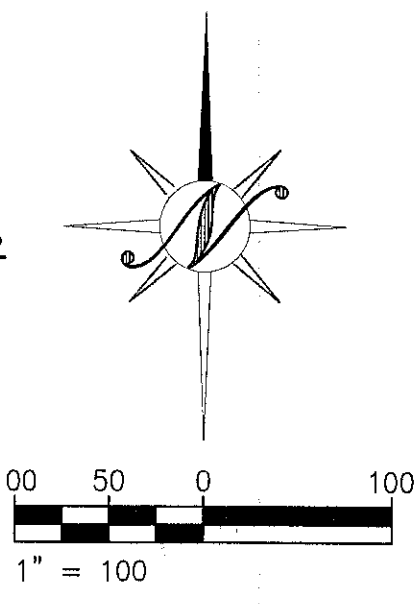
**STOCKTON, CALIF.**  
**GRADING PLAN**  
**VESTING TENTATIVE SUBDIVISION MAP**  
**TRA VIGNE WEST**

*North Star*  
**Engineering Group, Inc.**  
• CIVIL ENGINEERING • SURVEYING • PLANNING •  
620 12th Street Modesto, CA 95354  
(209) 524-3525 Phone (209) 524-3526 Fax

#:	15-1532
E:	01/31/2020
E:	AS SHOWN
WN:	TBA/PMH
GN:	PMH/CV/KM
D:	TPD

SHEET  
NUMBER

## TM 3.1

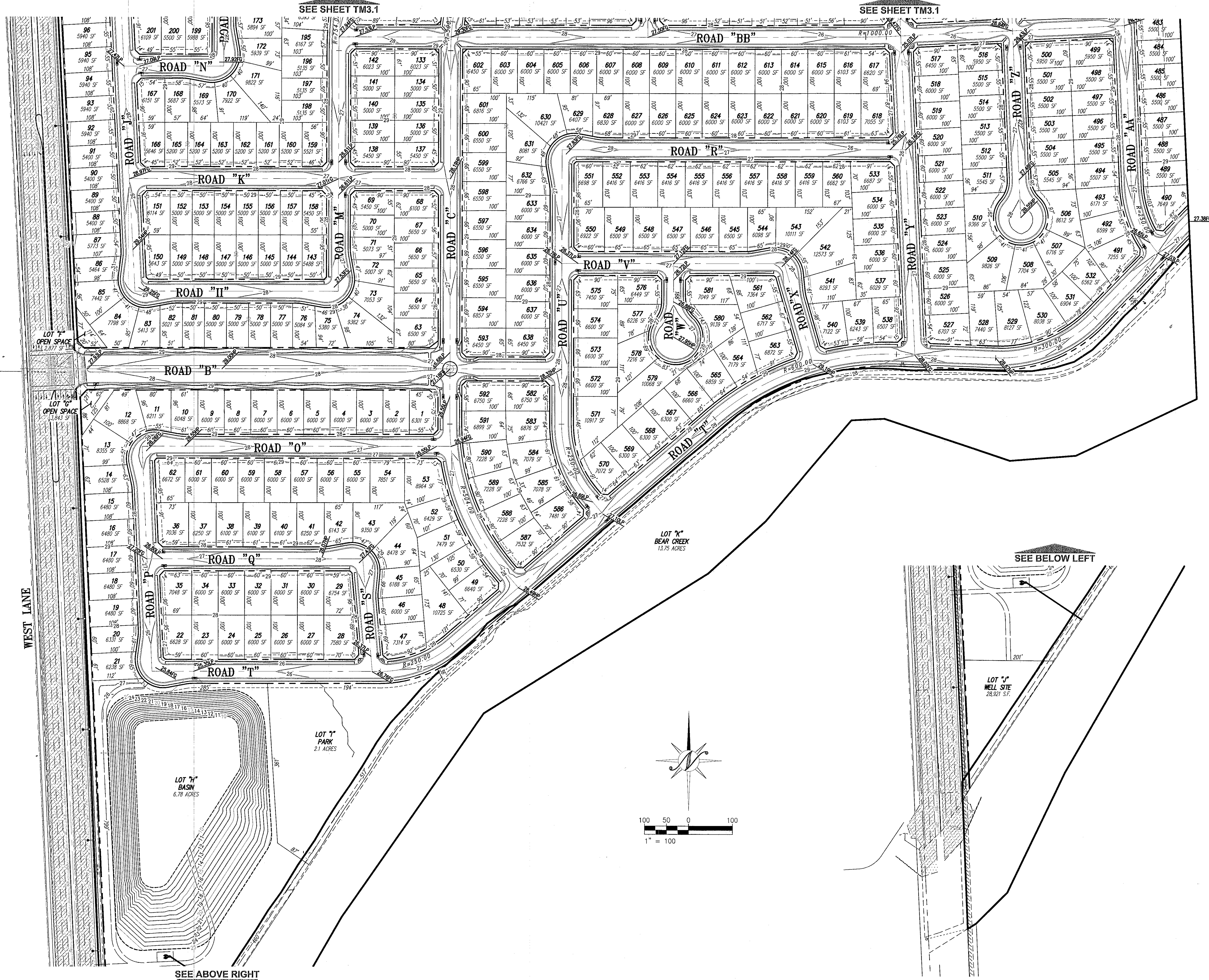


COPYRIGHT © 2020 NORTHSTAR ENGINEERING GROUP, INC



PLOTTED: 01/31/2020 10:26 PLOTTED BY: Phurbon  
DWGNAME: F:\15-1532 Bear Creek East\Planning\Tentative Map\TM 3.1-TSM.dwg





NO.	DATE	APPROVED	REVISIONS
			DESCRIPTIONS

**DIMENSION AND PRELIMINARY GRADING PLAN**  
**VESTING TENTATIVE SUBDIVISION MAP**  
**TRA VIGNE WEST**  
**STOCKTON, CALIFORNIA**

**Northstar**  
**Engineering Group, Inc.**  
• CIVIL ENGINEERING • SURVEYING • PLANNING •  
620 12th Street  
Modesto, CA 95354  
(209) 324-3325 Phone (209) 324-3326 Fax

JOB #: 15-1532  
DATE: 01/31/2020  
SCALE: AS SHOWN  
DRAWN: TBA/PMH  
DESIGN: PMH/CV/KM  
CHK'D: TPO

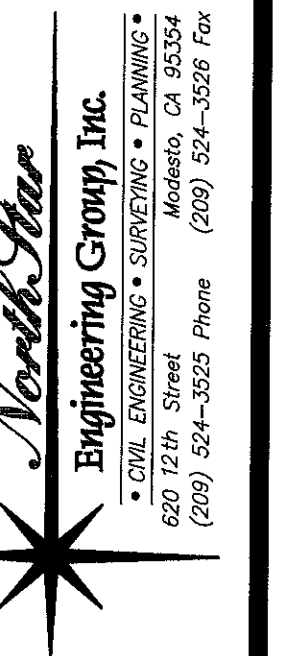
SHEET  
NUMBER

**TM 3.2**



[illegible]

# CALIFORNIA I

**STOCKTON,**

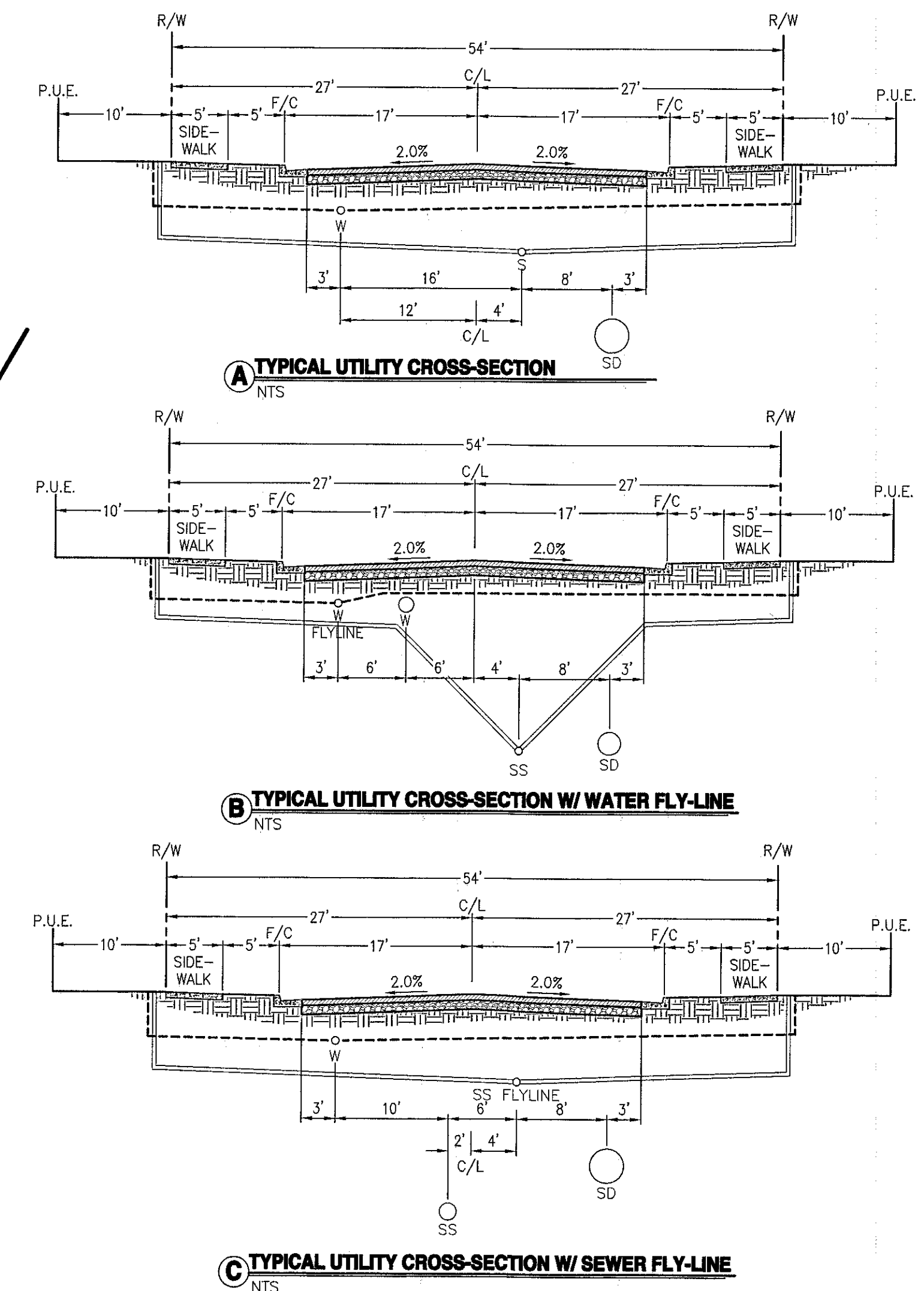
#:	15-1532
E:	01/31/2020
LE:	AS SHOWN
WN:	TBA/PMH
GN:	PMH/CV/KM
D:	TPD

SHEET  
NUMBER

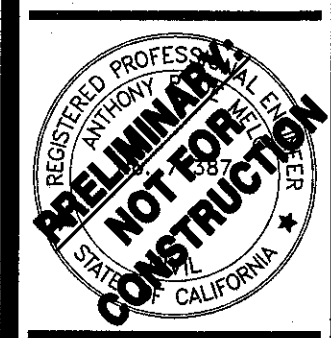
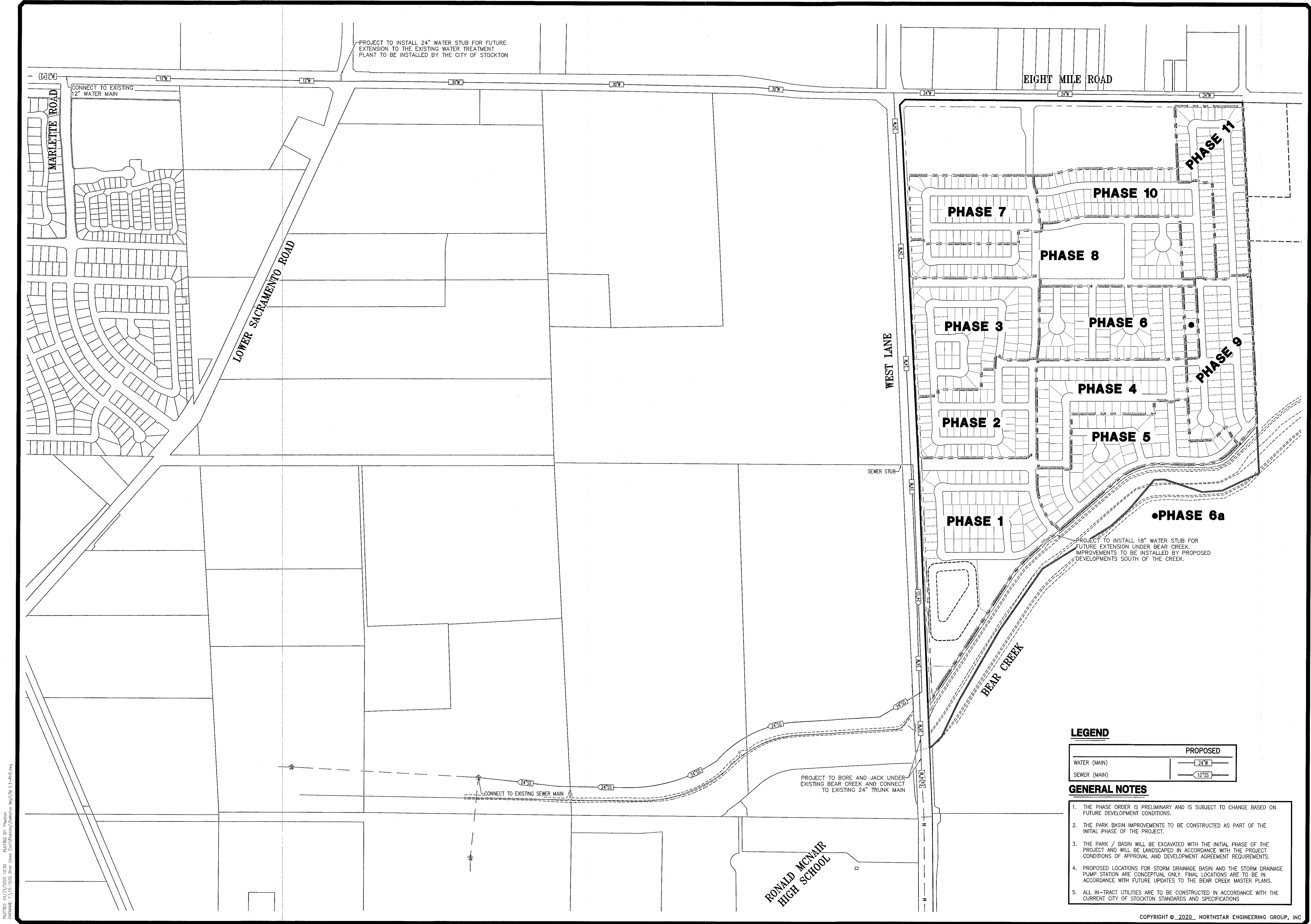
## TM 4.1



COPYRIGHT © 2020 NORTHSTAR ENGINEERING GROUP, INC







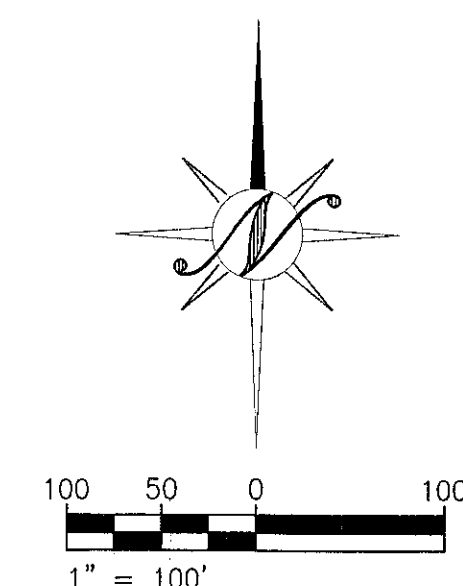
NO.	REVISIONS	DATE	APPROVED

**PRELIMINARY PHASING AND  
MAJOR OFF-SITE INFRASTRUCTURE**  
VESTING TENTATIVE SUBDIVISION MAP  
TRA VIGNE WEST  
STOCKTON, CALIFORNIA



JOB #: 15-1532  
DATE: 01/31/2020  
SCALE: AS SHOWN  
DRAWN: TBA/PMH  
DESIGN: PMH/CS/KM  
CHK'D: TPD  
SHEET  
NUMBER  
**TM 5.1**





PROPOSED LIMIT OF POSSIBLE VESTING TENTATIVE MAP REVISIONS TO ACCOUNT FOR PROPOSED SCHOOL SITE. THE SCHOOL DISTRICT IS TO DETERMINE THAT THIS SITE IS TO BE UTILIZED. A TOTAL OF 91 RESIDENTIAL UNITS TO BE REMOVED TO ACCOUT FOR THE SCHOOL SITE.

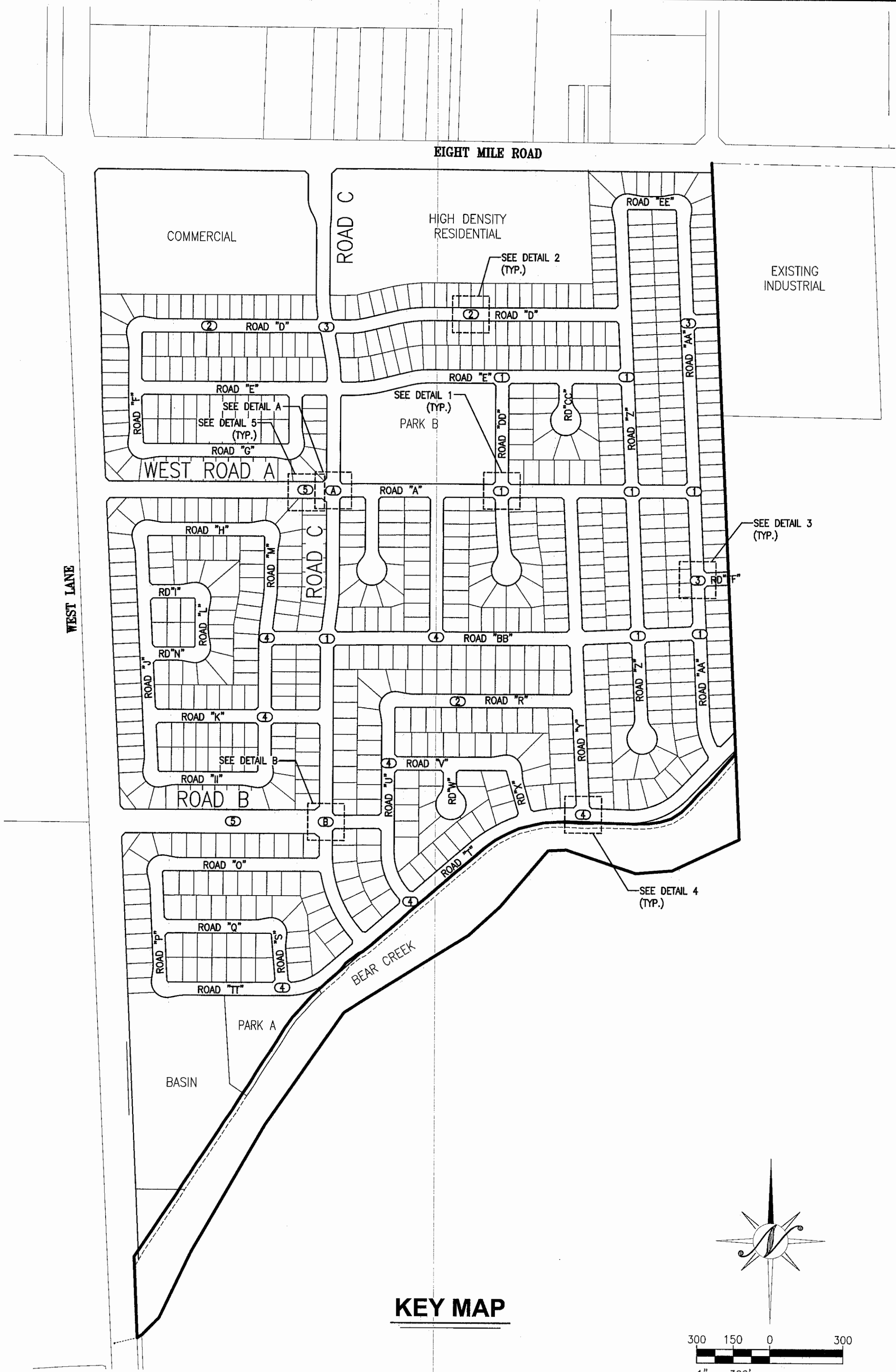
COPYRIGHT © 2020 NORTHSTAR ENGINEERING GROUP, INC



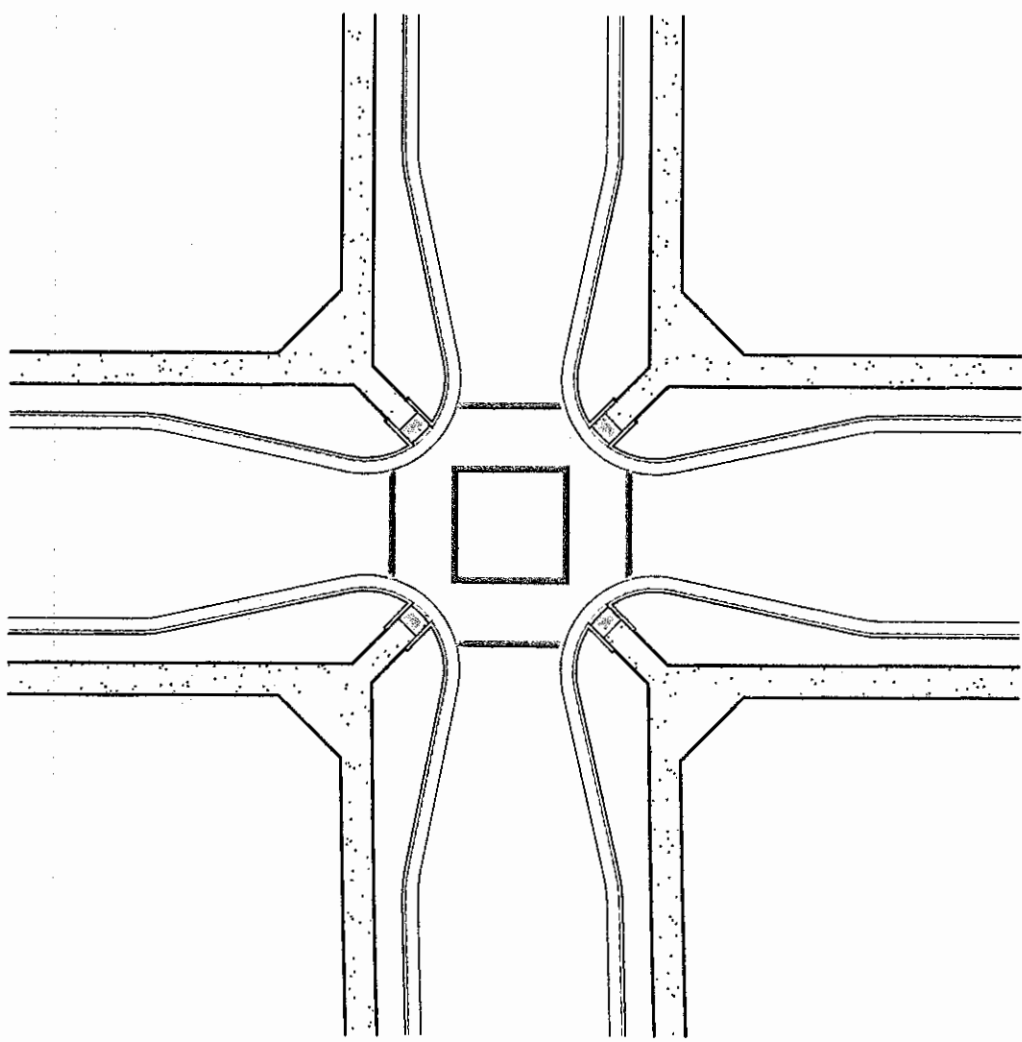
*North Star*  
Engineering Group, Inc.  
• CIVIL ENGINEERING • SURVEYING • PLANNING •  
620 12th Street Modesto, CA 95354  
(209) 524-3525 Phone (209) 524-3526 Fax

## TM 5.2



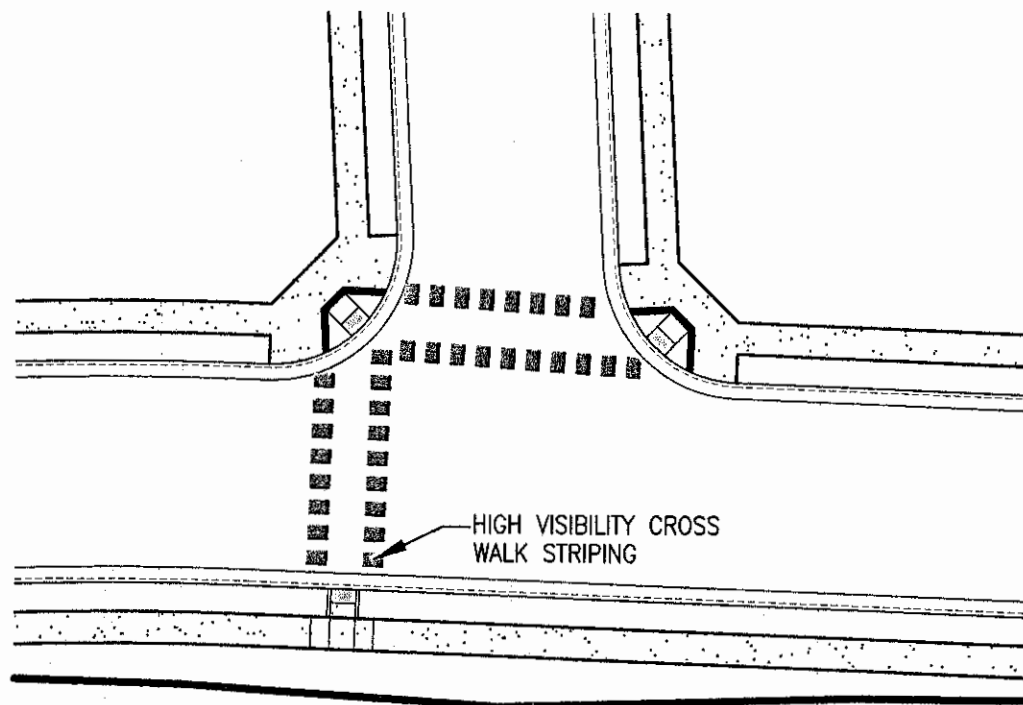


KEY MAP



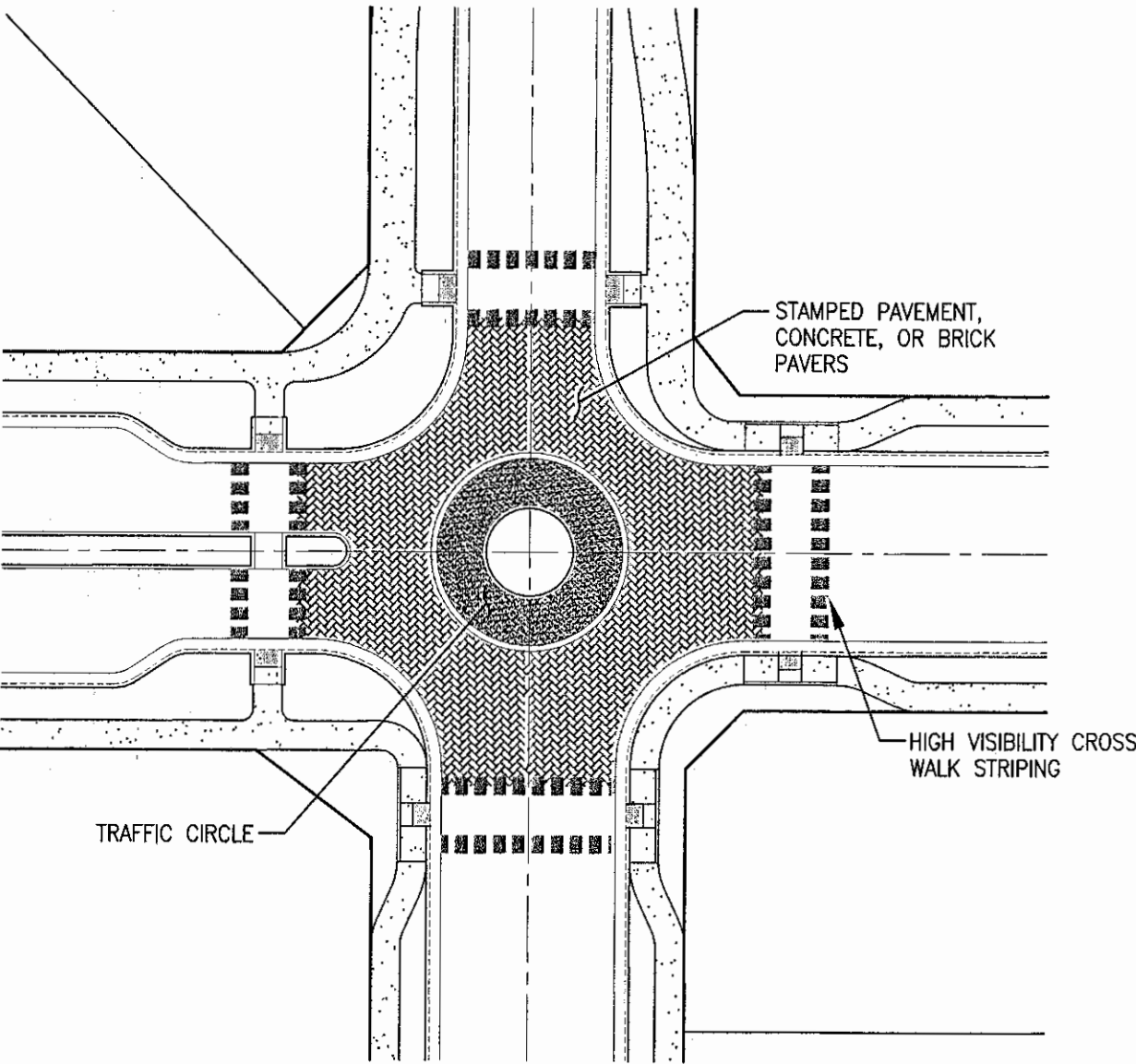
TYPICAL INTERSECTION WITH BULB OUTS

1 PER CITY STANDARD DETAIL R-18 NTS



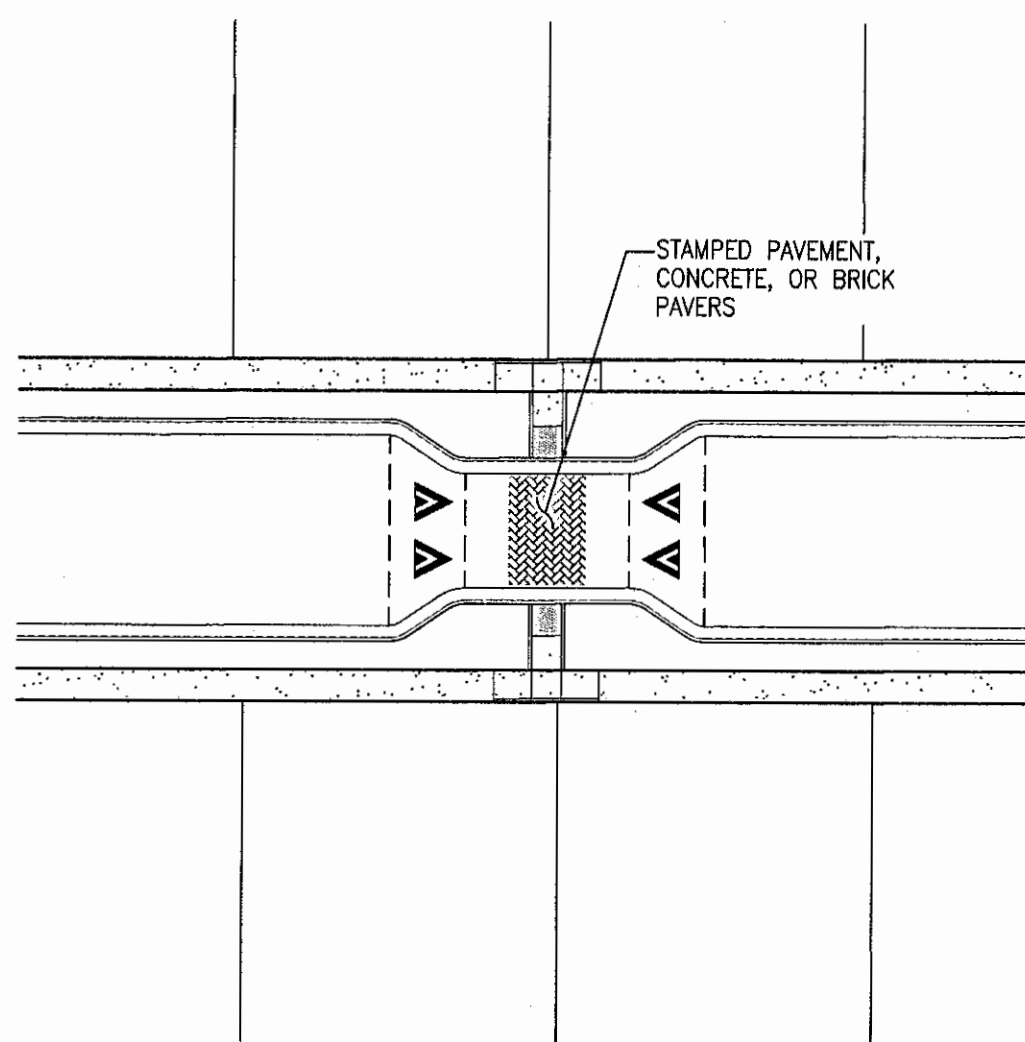
INTERSECTION WITH HIGH VISIBILITY CROSSWALK

4 NTS



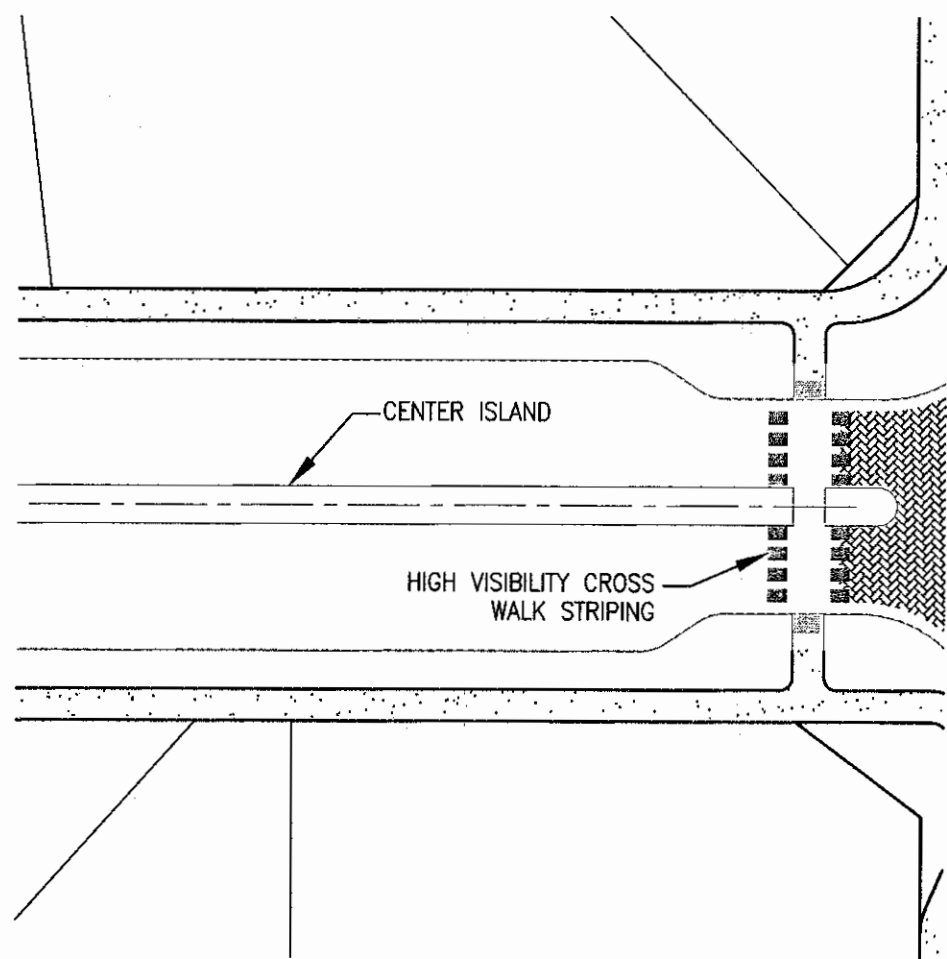
INTERSECTION AT ROADS A AND C

A NTS



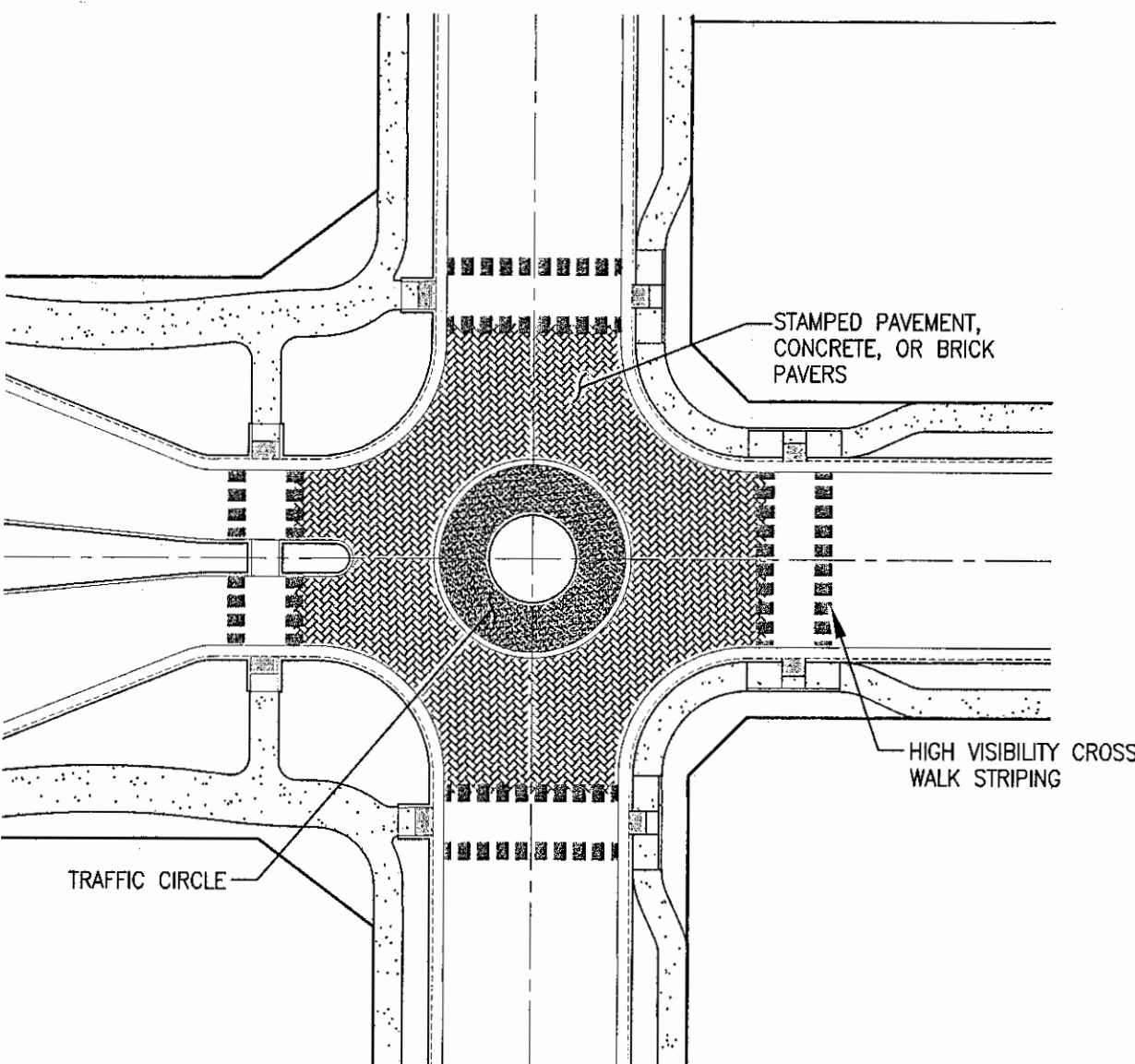
INTERSECTION WITH RAISED CROSSWALK

2 NTS



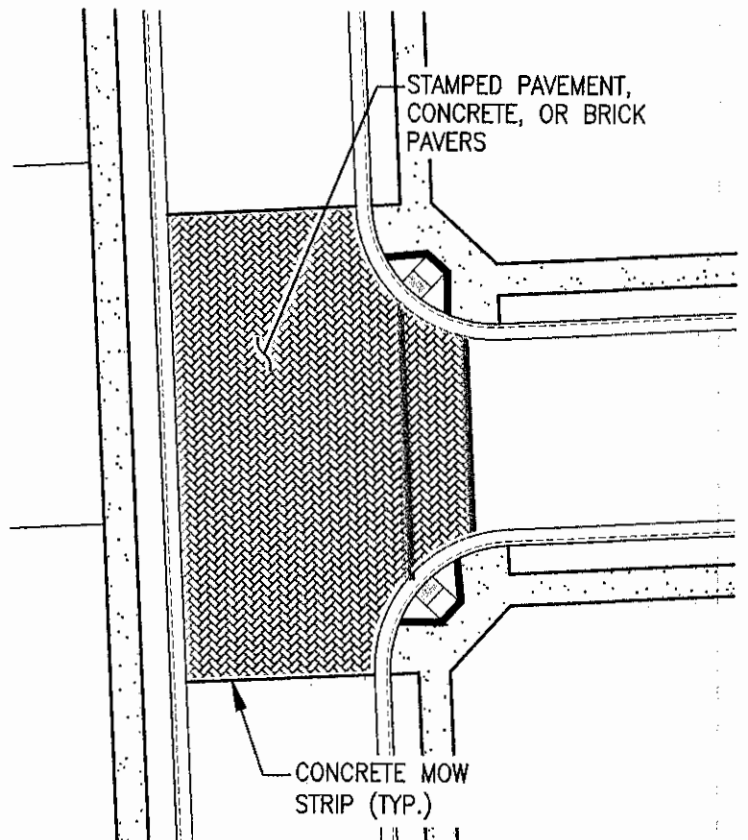
CENTER ISLAND NARROWING

5 NTS



INTERSECTION AT ROADS B AND C

B NTS



INTERSECTION WITH TEXTURED PAVEMENT

3 NTS

NOTE: ADDITIONAL STOP AND YIELD SIGNS TO BE INSTALLED AT THE DIRECTION OF THE CITY OF STOCKTON.

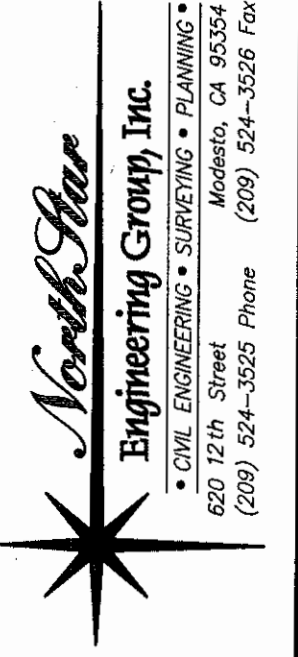
KEY NOTES

- 1 PROPOSED LIMIT OF POSSIBLE VESTING TENTATIVE MAP REVISIONS TO ACCOUNT FOR PROPOSED SCHOOL SITE. THE SCHOOL DISTRICT IS TO DETERMINE THAT THIS SITE IS TO BE UTILIZED. A TOTAL OF 91 RESIDENTIAL UNITS TO BE REMOVED TO ACCOUNT FOR THE SCHOOL SITE.
- 2 PROPOSED LIMIT OF POSSIBLE VESTING TENTATIVE MAP REVISION TO ALLOW FOR PROPOSED BEAR CREEK BRIDGE CROSSING. IF IT IS DETERMINED DURING THE PREPARATION OF THE EIR OR PROCESSING OF THE TRAFFIC STUDY THAT A BRIDGE IS REQUIRED, THEN THE TENTATIVE MAP SHALL BE REVISED ACCORDINGLY TO LOOSE 8 LOTS.



NO.	REVISIONS	DATE	APPROVED

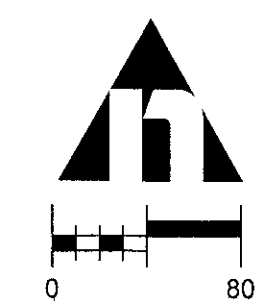
TRAFFIC CALMING PLAN  
VESTING TENTATIVE SUBDIVISION MAP  
TRA VIGNE WEST  
STOCKTON, CALIFORNIA



JOB #:	15-1532
DATE:	01/31/2020
SCALE:	AS SHOWN
DRAWN:	TBA/FMH
DESIGN:	FMH/CV/KM
CHK'D:	TPD
SHEET NUMBER	

TM 5.3





VESTING TENTATIVE SUBDIVISION MAP  
**TRA VIGNE EAST**  
A PORTION OF SECTION 2, TOWNSHIP 2 NORTH,  
RANGE 6 EAST, MOUNT DIABLO BASE AND MERIDIAN  
SAN JOAQUIN COUNTY, CALIFORNIA

TRACT NO. 4027  
VESTING TENTATIVE SUBDIVISION MAP  
**TRA VIGNE EAST**  
DEPARTMENT OF PUBLIC WORKS  
CITY OF STOCKTON, CALIFORNIA

JOB NO. 16-016	APPROVED BY:	SHEET NO. 10
DATE FEBRUARY, 2020		OF 10 SHEETS
SCALE AS SHOWN		PROJECT NO.
DR. BY MS		
CK. BY RM		
FILE		
	CITY ENGINEER STOCKTON, CALIFORNIA	



UTILITY PLAN - SOUTH

REVISIONS				
NO.	DESCRIPTIONS	DATE	BY	APPROVED BY
1				
2				
3				
4				
5				
6				
7				
8				
9				
10				

**MCR ENGINEERING**  
www.mcreng.com

MCR ENGINEERING, INC.  
1242 DUPONT COURT  
MANTECA, CA 95336  
TEL : ( 209 ) 239 - 6229  
FAX : ( 209 ) 239 - 8839

