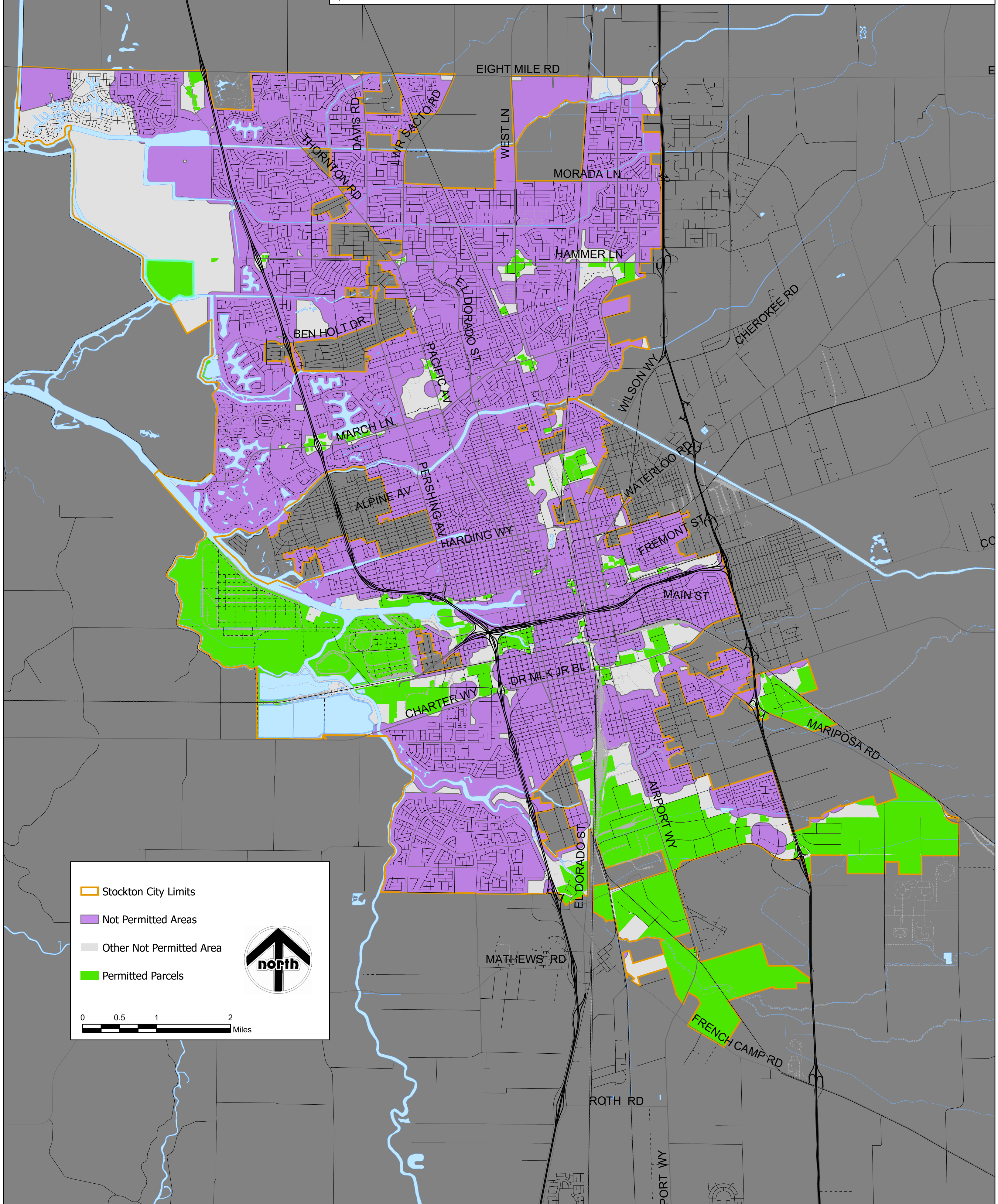


# Cannabis Retail Location Planning

Option One: Current Requirements  
1,006 Parcels - 983 for Storefront Retail

The information on this map is based on the most current information available to the City of Stockton Geographic Information System Section. The information on this map is not intended to replace engineering, financial or primary records research.

Boyd - Nov '21



Stockton City Limits

Not Permitted Areas

Other Not Permitted Area

Permitted Parcels





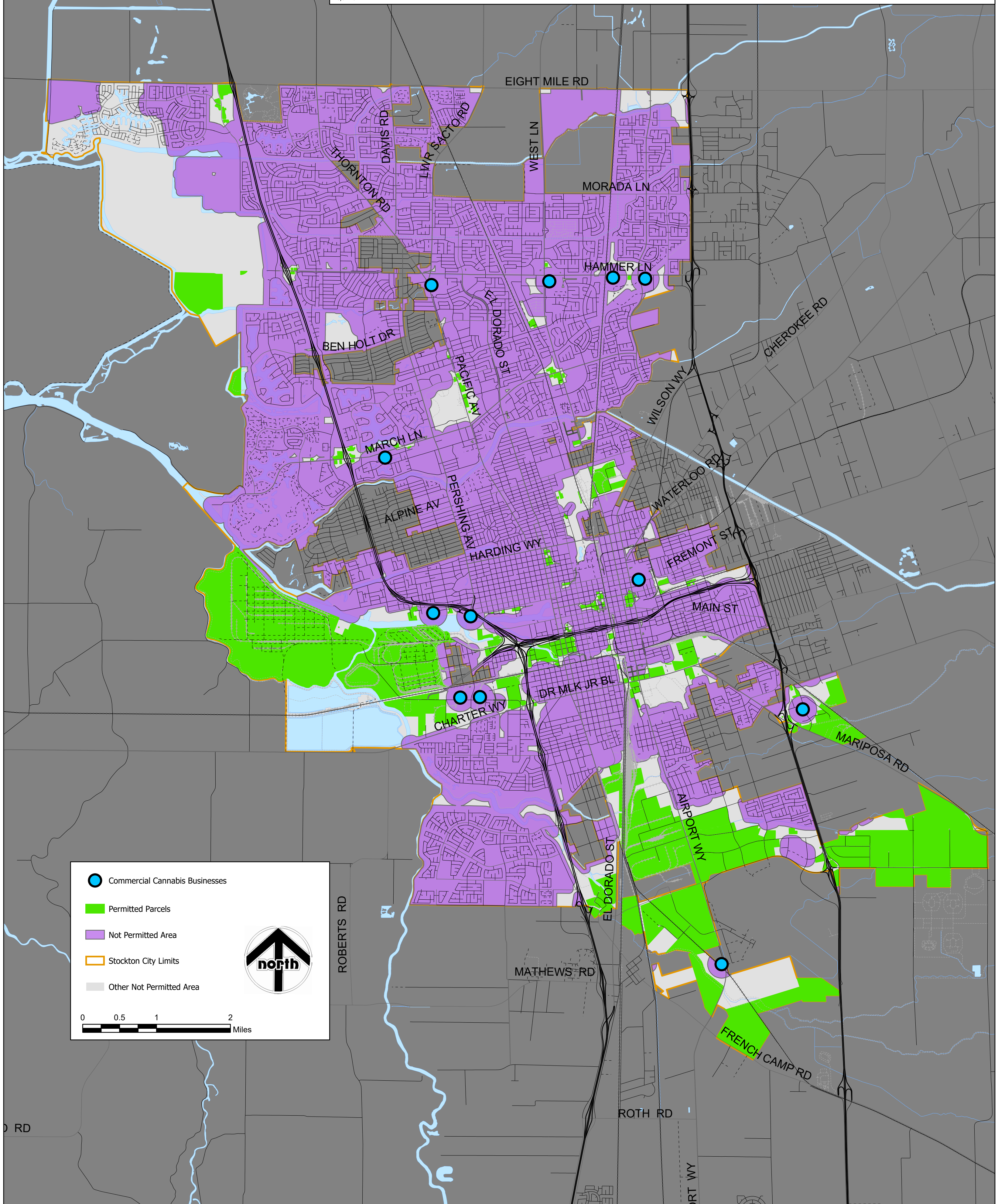
# Cannabis Retail Location Planning









Option Two: Staff Recommendation  
969 Parcels - 952 for Storefront Retail

The information on this map is based on the most current information available to the City of Stockton Geographic Information System Section. The information on this map is not intended to replace engineering, financial or primary records research.


Boyd - Nov '21



-  Commercial Cannabis Businesses
-  Permitted Parcels
-  Not Permitted Area
-  Stockton City Limits
-  Other Not Permitted Area



**north**



0 0.5 1 2 Miles

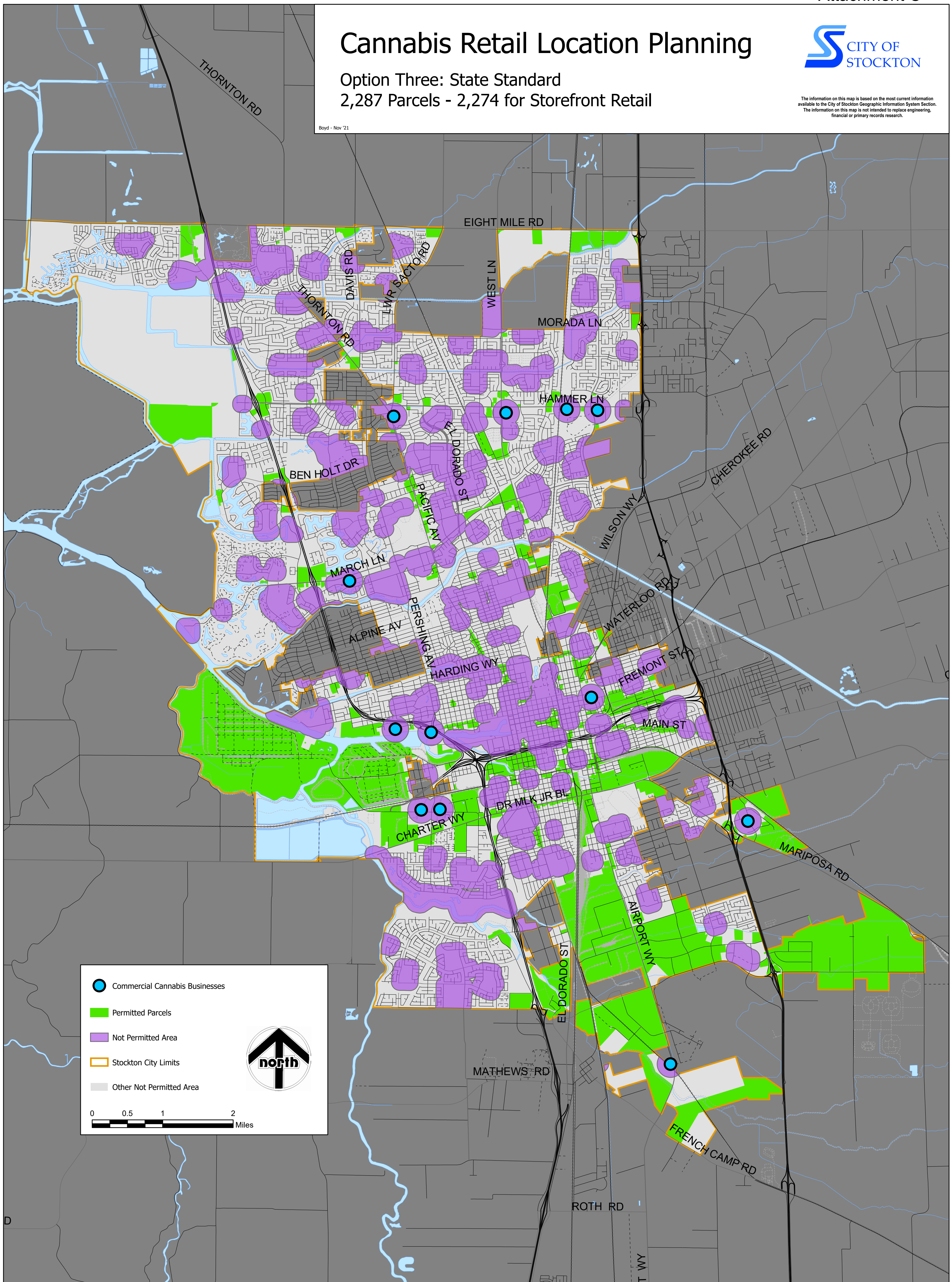


# Cannabis Retail Location Planning

Option Three: State Standard  
2,287 Parcels - 2,274 for Storefront Retail

The information on this map is based on the most current information available to the City of Stockton Geographic Information System Section. The information on this map is not intended to replace engineering, financial or primary records research.

Boyd - Nov '21



- Commercial Cannabis Businesses
- Permitted Parcels
- Not Permitted Area
- Stockton City Limits
- Other Not Permitted Area

**north**

0 0.5 1 2 Miles