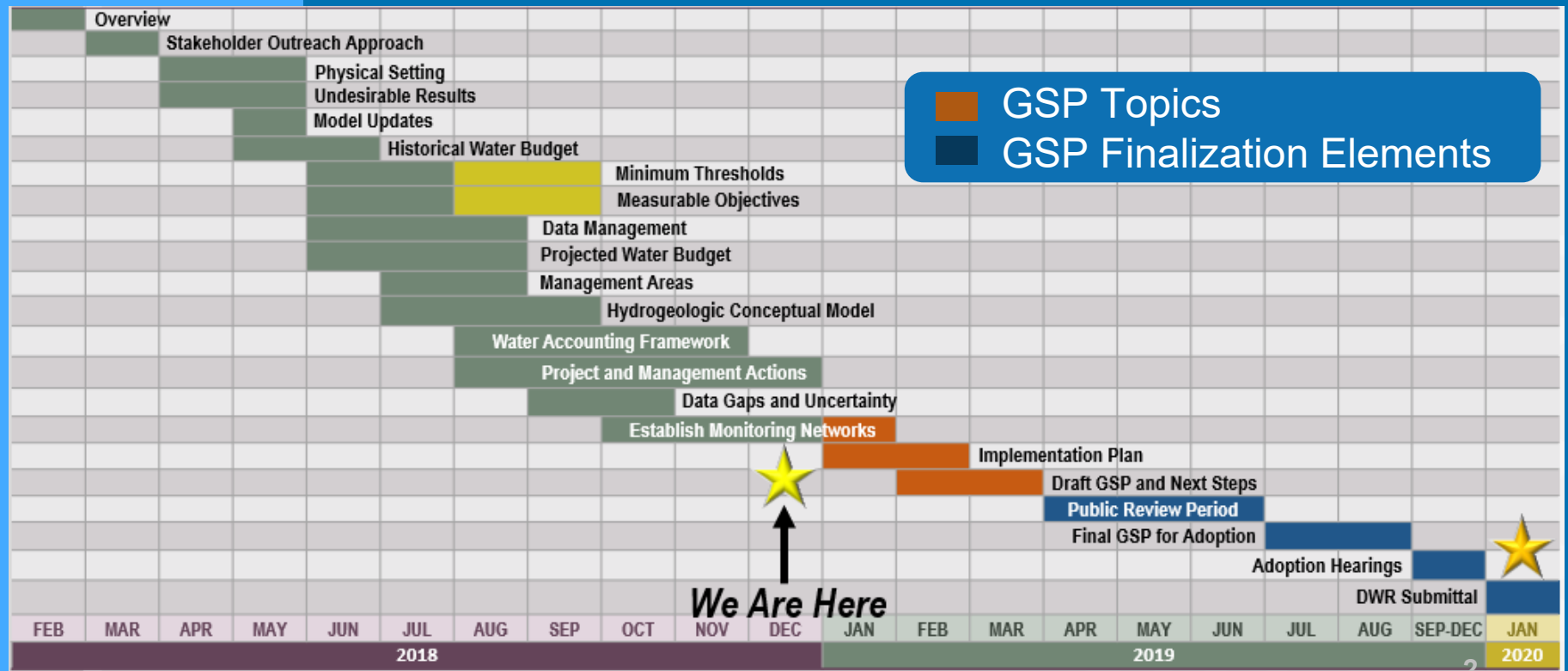




**EASTERN SAN JOAQUIN  
GROUNDWATER AUTHORITY**

# Groundwater Sustainability Outreach January 2019

# GSP Topics & Project Schedule







# Second Informational Meeting



- The second informational meeting/open house was held on November 7<sup>th</sup> in Manteca
- There were 25 participants in attendance
- The next informational meeting will be held in the January/February timeframe





# Projects and Management Actions

# Reminder: Six Sustainability Indicators to be Addressed



Chronic lowering of groundwater levels indicating a significant and unreasonable depletion of supply



Significant and unreasonable degraded water quality



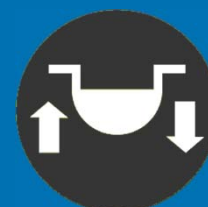
Significant and unreasonable reduction of groundwater storage



Significant and unreasonable land subsidence



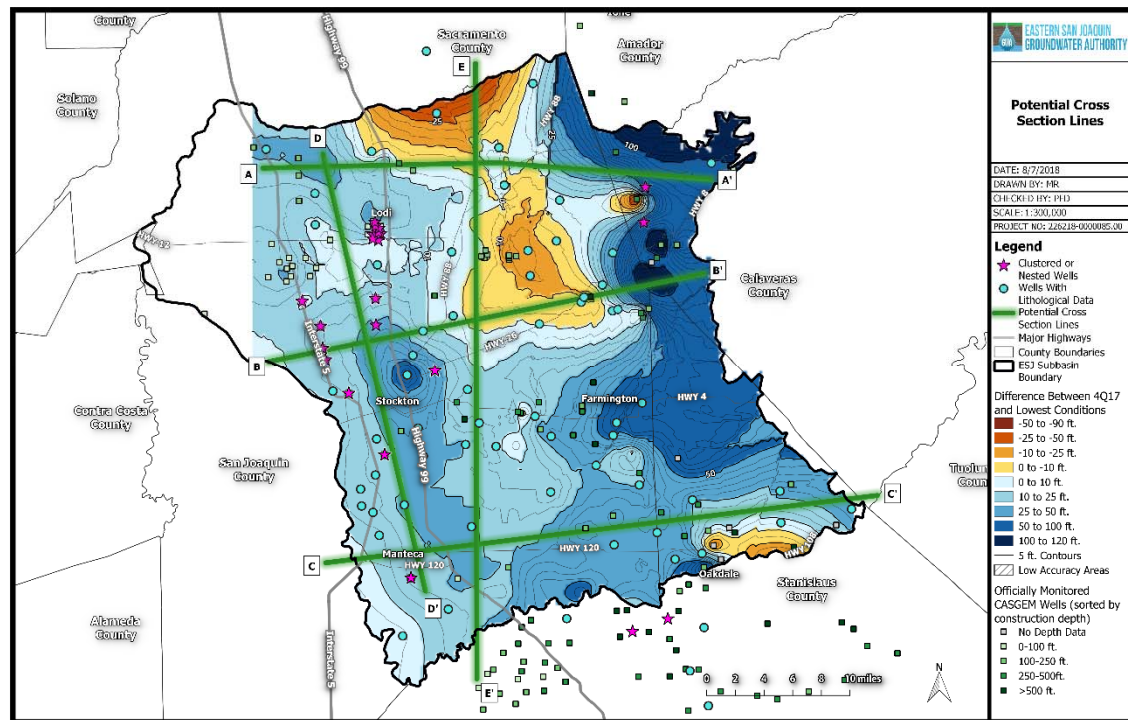
Significant and unreasonable seawater intrusion



Depletions of interconnected surface water that have significant and unreasonable adverse impacts on beneficial uses of the surface water



# 5 Preliminary HCM Cross-Sections Will be Developed for the Subbasin



Cross-section lines were chosen based on the following characteristics:

- Spans the entire subbasin
- Proximity to an adequate number of wells with geologic and construction information
- Covers areas where current groundwater levels are lower than drought levels

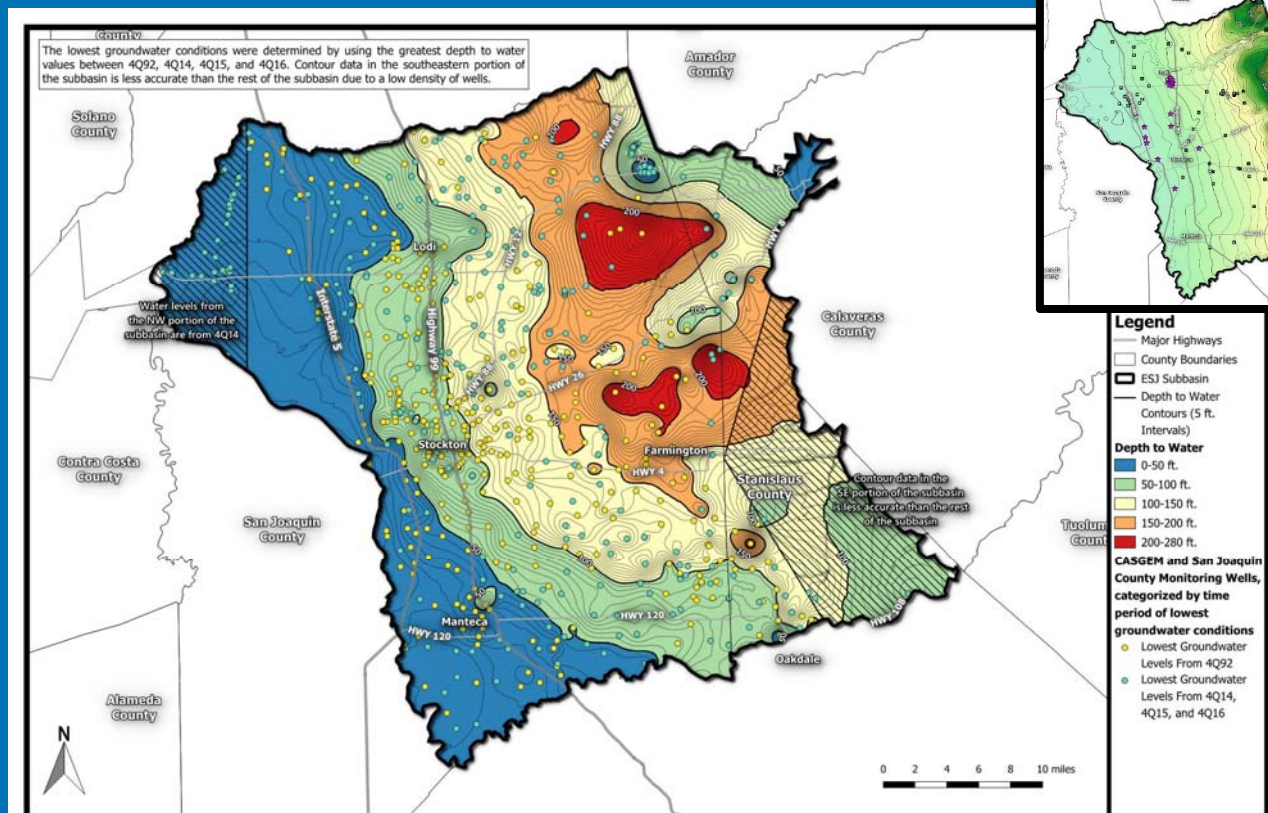
# We Can Set a Threshold to Capture the Lowest Lows



**EASTERN SAN JOAQUIN  
GROUNDWATER AUTHORITY**

(Yellow) – Areas where threshold is based on 1992 levels

(Blue) – Areas where threshold is based on 2015-16 levels





A wide-angle photograph of a vineyard during the 'golden hour' of sunset. The sun is a bright, glowing orb on the horizon, casting a warm, golden light across the sky and the rows of grapevines. The sky transitions from a deep orange near the horizon to a clear blue at the top. The vineyard rows are lush and green, stretching into the distance. In the far background, a small town or village is visible under the soft light. The overall mood is peaceful and serene.

# Project Review

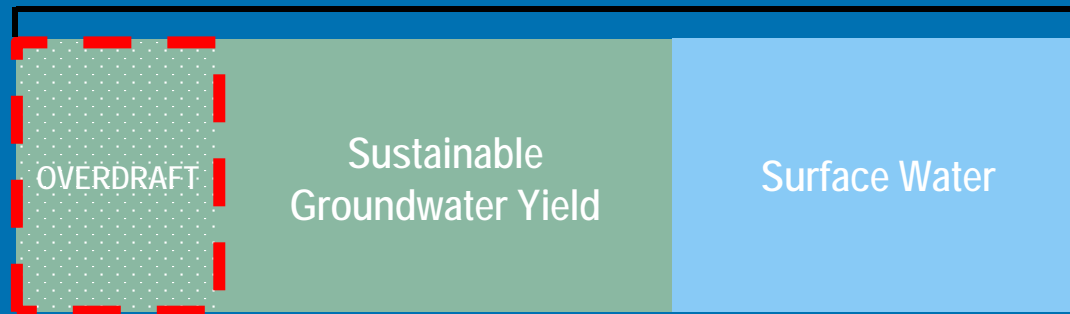
# Projects and Management Actions Will Be Used to Meet Overdraft



EASTERN SAN JOAQUIN  
GROUNDWATER AUTHORITY

## Total Water Use

Projected  
Condition

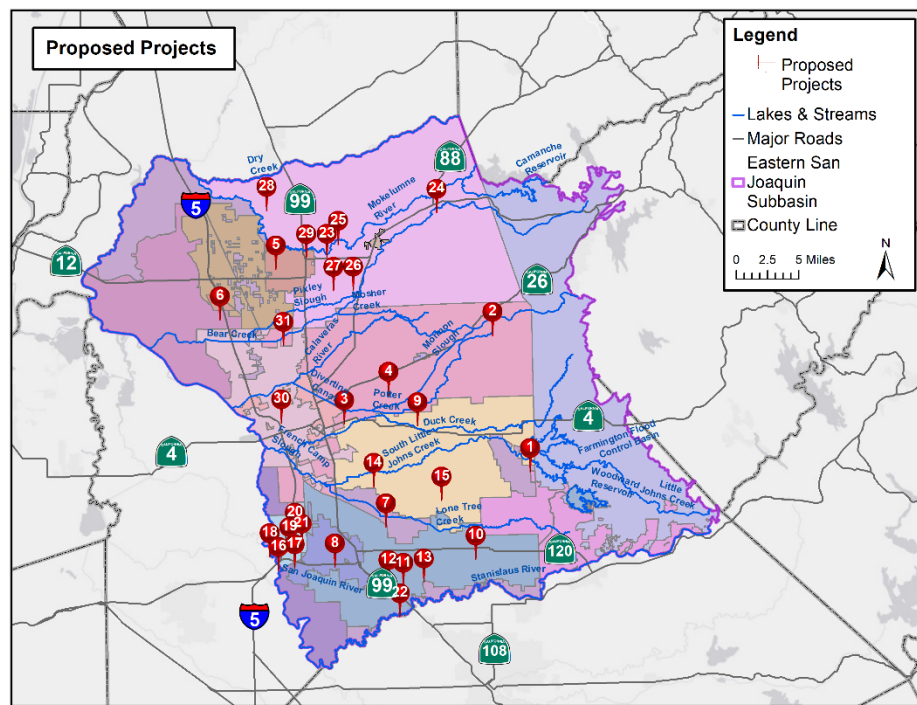


Sustainable  
Condition





# Project Locations



## 31 Proposed Projects Received To-Date

- |   |   |
|---|---|
| 1 – Farmington Dam Repurpose Project          | 16 – Recycled Water Program Expansion   |
| 2 – Lake Grupe In-Lieu Recharge               | 17 – LAS-3 Percolation Basin            |
| 3 – Raw Water Reliability and Recharge        | 18 – Conjunctive Use of GW and SW       |
| 4 – SW Implementation Expansion               | 19 – UWMP Water Conservation            |
| 5 – SW Facility Expansion & Delivery Pipeline | 20 – NPDES Phase 2 MS4 Compliance       |
| 6 – White Slough WPCF Expansion               | 21 – Water Meter Improvements           |
| 7 – Recycled Water Transfer to Agriculture    | 22 – City of Ripon Surface Water Supply |
| 8 – Demand Management Measures                | 23 – Cal Fed GW Recharge Project        |
| 9 – Water Transfers to SEWD and CSJWCD        | 24 – Mokelumne River Loss Study         |
| 10 – Increase Nick DeGroot SW Deliveries      | 25 – North System Modernization         |
| 11 – City of Escalon Wastewater Reuse         | 26 – PDA Banking                        |
| 12 – South San Joaquin Stormwater Reuse       | 27 – South System Modernization         |
| 13 – Pressurization of SSJID Facilities       | 28 – Tracy Lakes GW Recharge            |
| 14 – BNSC Intermodal Facility Recharge Pond   | 29 – Winery Recycled Water              |
| 15 – CSJWCD Capital Improvement               | 30 – Advanced Metering Infrastructure   |
|   | 31 – Mobilizing Recharge Opportunities  |

# Pathway to Project Implementation



EASTERN SAN JOAQUIN  
GROUNDWATER AUTHORITY

★ We are here

STEP 1

## Approaches

- Regional-Scale Projects
- Subregional-Scale Projects
- GSA-Scale Projects

Project OR portfolio of projects that provide regional benefit – e.g., one large transfer OR a series of small, geographically diverse projects (or a combination)

STEP 2

## Funding

- Regional Funding
- GSA Funding

Start at regional scale

STEP 3

## Implementation

- Regional JPA
- Subregion GSAs



# Preliminary Project Portfolios



Preliminary portfolios are being developed to package projects most in line with these criteria:

- Cost-Effectiveness
- Regional Diversity
- Minimized Infrastructure
- Environmental Benefit
- DAC Benefit
- Impact on Cone of Depression
- Fast Implementation
- Small-Volume Projects
- Large-Volume Projects

# SGMA UPDATE



EASTERN SAN JOAQUIN  
GROUNDWATER AUTHORITY

- QUESTIONS



# Projects Received – Part 1 of 3



Project #	Project Description	Submitting GSA	Category
1	Farmington Dam Repurpose Project	SEWD	Recharge
2	Lake Grube In-Lieu Recharge	SEWD	Recharge
3	Raw Water Reliability and Recharge	SEWD	Recharge
4	SW Implementation Expansion	SEWD	SW Supply
5	SW Facility Expansion & Delivery Pipeline	City of Lodi	SW Supply
6	White Slough WPCF Expansion	City of Lodi	Recycling
7	Recycled Water Transfer to Agriculture	City of Manteca	Recycling/Transfers
8	Demand Management Measures	City of Manteca	Conservation
9	Water Transfers to SEWD and CSJWCD	SSJ GSA	Transfers
10	Increase Nick DeGroot SW Deliveries	SSJ GSA	SW Supply
11	City of Escalon Wastewater Reuse	SSJ GSA	Recycling

# Projects Received – Part 2 of 3



Project #	Project Description	Submitting GSA	Category
12	South San Joaquin Stormwater Reuse	SSJ GSA	Stormwater
13	Pressurization of SSJID Facilities	SSJ GSA	Conservation
14	BNSC Intermodal Facility Recharge Pond	CSJWCD	Recharge
15	CSJWCD Capital Improvement Program	CSJWCD	SW Supply
16	Recycled Water Program Expansion	City of Lathrop	Recycling
17	LAS-3 Percolation Basin	City of Lathrop	Recharge
18	Conjunctive Use of GW and SW	City of Lathrop	SW Supply
19	City of Lathrop UWMP Water Conservation	City of Lathrop	Conservation
20	NPDES Phase 2 MS4 Compliance Program	City of Lathrop	Stormwater
21	Water Meter Improvements	City of Lathrop	Conservation
22	City of Ripon Surface Water Supply	SSJ GSA	SW Supply



# Projects Received – Part 3 of 3



Project #	Project Description	Submitting GSA	Category
23	Cal Fed GW Recharge Project	NSJWCD	Recharge
24	Mokelumne River Loss Study	NSJWCD	Accounting
25	North System Modernization	NSJWCD	SW Supply
26	PDA Banking	NSJWCD	SW Supply
27	South System Modernization	NSJWCD	SW Supply
28	Tracy Lakes GW Recharge	NSJWCD	Recharge
29	Winery Recycled Water	NSJWCD	Recycling/Recharge

# Reminder – The GWA is on Facebook



**Eastern San Joaquin Groundwater Authority**

1 hr · 🌐

Join us tomorrow for our informational meeting from 6:30-8 p.m. at the Manteca Transit Center, 220 Moffat Blvd, Manteca, CA. We want to provide you updates on the Groundwater Sustainability Plan and you can provide us with your input!



**EASTERN SAN JOAQUIN  
GROUNDWATER AUTHORITY**

**BRING YOUR QUESTIONS!  
WE HAVE THE ANSWERS.**



- The ESJ GWA Facebook page provides updates on GSP development and upcoming events
- You can like the page, share posts, or tag the page in your own posts

[www.facebook.com/ESJGroundwaterAuthority](http://www.facebook.com/ESJGroundwaterAuthority)

