

# COUNCIL WATER COMMITTEE

Groundwater Recharge Project

July 10, 2025

Agenda Item No. 25-0762

# MUNICIPAL UTILITIES DEPARTMENT (MUD)

## Department Description

### **Water Utility**

- Treat & deliver high-quality drinking water to the community

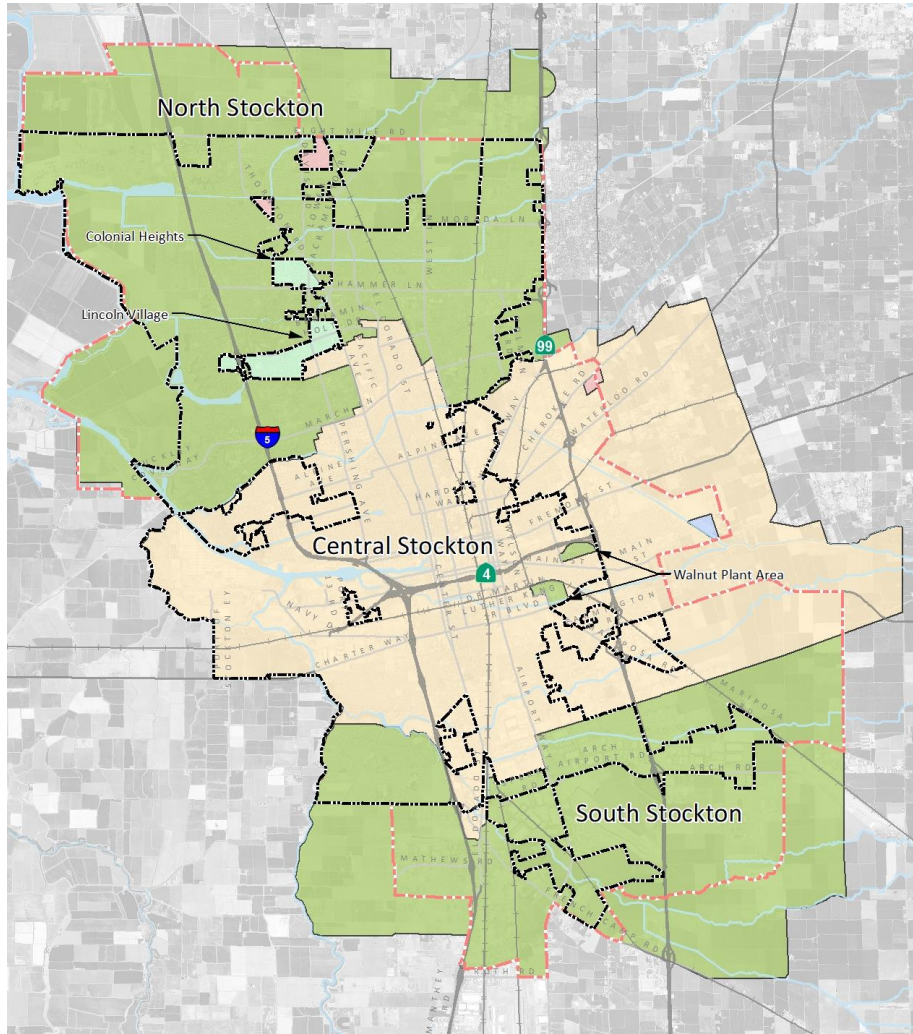
### **Wastewater Utility**

- Collect, treat and recover wastewater for the greater Stockton area

### **Stormwater Utility**

- Collect & discharge surface runoff in City to rivers and local flood basins

# CITY OF STOCKTON WATER SERVICE AREAS



- **MUD** serves North and South Stockton
- **California Water Service Company** serves Central Stockton

# DRINKING WATER - SURFACE WATER SOURCES

## San Joaquin and Mokelumne Rivers

- Treated at City's Delta Water Treatment Plant

## Calaveras and Stanislaus Rivers

- Treated at Stockton East Water District Water Treatment Plant



# DRINKING WATER - GROUNDWATER SUPPLIES



- Groundwater wells ensure continued water supply, quality, reliability, and drought resiliency for the City.
- Used conjunctively with surface water supplies
- **North Stockton** - 6 active wells
- **South Stockton** - 3 active wells



# GROUNDWATER RECHARGE BASINS

- **Project** – Groundwater Recharge Basins
- **Location** – Delta Water Treatment Plant
- **Project Cost** - \$11.4M
- **Project Completion** – 2027
- **Facilities**
  - 3 Groundwater Recharge Ponds
  - Visitor information Center
  - Viewing area and a walking trail around 1 recharge pond



# PROJECT BENEFITS

- Supports and aligns with the Groundwater Sustainability Plan (GSP)
- Protects the City's existing Delta Intake water right
- Enables groundwater banking using water from alternative sources such as the Mokelumne River
- Provides up to 21,000 acre-feet of groundwater recharge annually
- Enhances drought resilience
- Promotes public outreach and education
- Offers multi-benefit use, including the creation of wildlife habitat

# GRANTS

- **Integrated Regional Water Management Grant**
  - \$1,900,000
  - Design and Construction phase
- **Sustainable Groundwater Management Grant**
  - \$300,000
  - Design phase of the project
- **WaterSMART Water and Energy Efficiency Grant**
  - \$400,000
  - Design phase of the project



— BUREAU OF —  
RECLAMATION



CALIFORNIA DEPARTMENT OF  
WATER RESOURCES





# SITE PLAN



PIXLEY RAW  
WATER FEED

VISITOR CENTER  
AND LANDSCAPING

(E) 48"  
PIXLEY  
PIPELINE

RECHARGE  
BASIN No.1

NORTHERN  
ENTRANCE  
GATE

(E) 54" DELTA  
PIPELINE

RECHARGE  
BASIN No.2

BIRD  
HABITAT  
ISLANDS  
(TYP)

DELTA RAW  
WATER FEED

## LEGEND

RECHARGE  
BASIN No.3

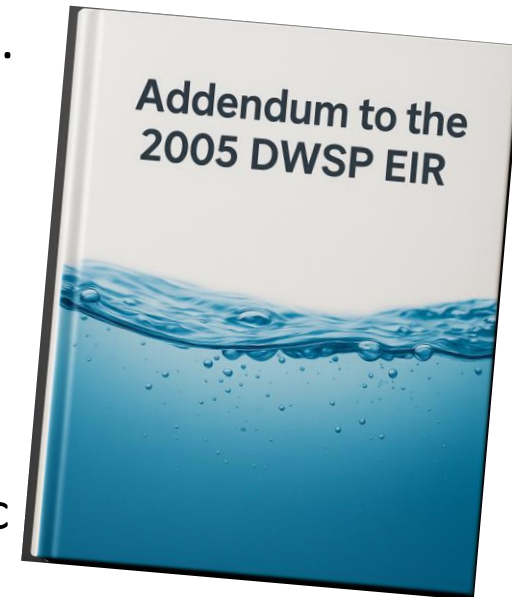
SOUTHERN  
ENTRANCE  
GATE

— PIXLEY RAW WATER FEED

— DELTA RAW WATER FEED

# APPROVE ADDENDUM TO THE 2005 DWSP EIR

- The City certified a Program Environmental Impact Report (EIR) for the Stockton Delta Water Supply Project (DWSP) in October 2005.
- HELIX Environmental Planning, Inc. prepared an Addendum on behalf of the City of Stockton
- The addendum includes mitigation efforts the City must comply with before and during construction
- The addendum complies with California Public Resources Code (PRC) Section 21166 and CEQA Guidelines Sections 15152 and 15162.
- Stockton City Council can approve the addendum without a public hearing.



# CONSTRUCTION MANAGEMENT

- Six proposals were received on May 29, 2025.
- A committee of MUD staff reviewed and scored the proposals.
- Procurement tabulated the final scores, incorporating points for cost and local preference.
- Inferrera Construction Management, Inc. (ICM) was identified as the most qualified vendor.
- The proposed fee schedule is estimated at \$728,760.
- An Intent to Award letter has been issued to ICM.

# DESIGN CHANGES FROM ORIGINAL CONTRACT

- Added connection and control facilities from the Woodbridge Irrigation District's Pixley Pipeline.
- Included new interconnections between recharge ponds to enhance operational flexibility.
- Enhanced the functionality of the visitor center to create a more park-like atmosphere.
- The visitor center will feature project information and serve as an educational destination for students and the public.



# CONTRACT CHANGE ORDER





# CONTRACT CHANGE ORDER... continued



# CONTRACT CHANGE ORDER... continued

<u>No.</u>	<u>Description</u>	<u>Total Cost</u>
1	Cost Expended to develop electrical scope expansion Pixley pipeline and Landscape Scope	\$148,000.00
2	Pixley Pipeline	\$1,332,000.00
3	Additional Dry Wells	\$180,000.00
4	Pond Equalization Crossings	\$230,000.00
5	Additional Fencing Cost	\$225,000.00
6	Modifications to RW line: Added ARV & Vaults	\$160,000.00
7	Increase in Electrical Scope	\$1,921,000.00
8	Additional Increase in Engineering cost due to increased scope	\$363,000.00
9	SCADA Costs (Budget)	\$50,000.00
10	Credits from Original Contract	\$(943,390.00)
11	Cost for Bonds & Insurance & Fee	\$239,955.00
<b>Total</b>		<b>\$3,914,565.00</b>

# CONTRACT CHANGE ORDER... continued

Original Contract	\$ 11,438,248.00
Project functionality Expansion	\$ 3,914,565.00
Visitor Center & Landscape	\$ 1,800,000.00
<b>New Contract Amount</b>	<b>\$ 17,152,813.00</b>

# RECOMMENDATION

- Recommend the following to City Council:
  - Approve the addendum to the 2005 DWSP EIR
  - Awarding a contract to ICM as the construction manager
  - Approve a contract change order to Gateway Pacific