

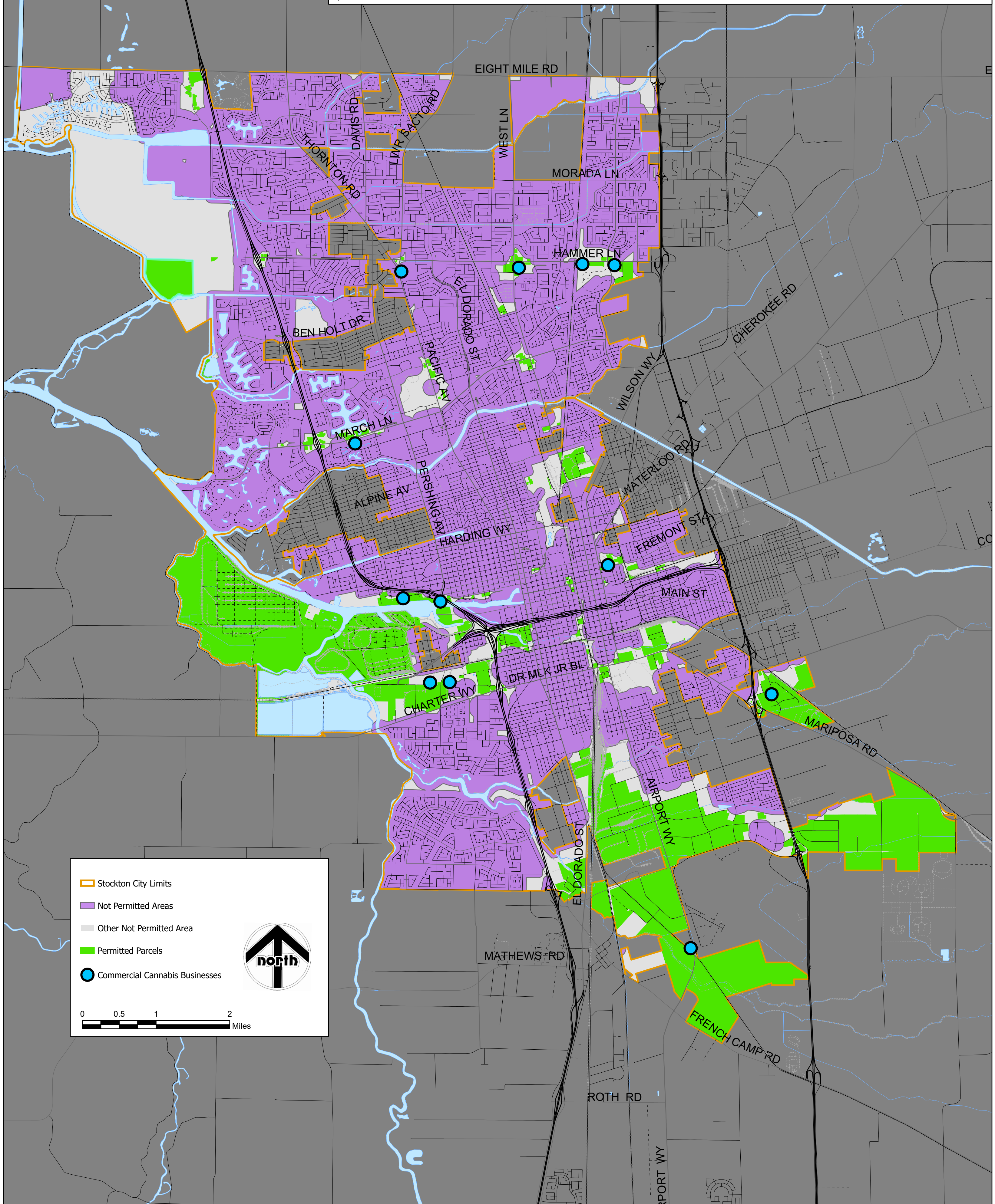
Cannabis Retail Location Planning

Option One: Current Requirements
1,006 Parcels - 983 for Storefront Retail



The information on this map is based on the most current information available to the City of Stockton Geographic Information System Section. The information on this map is not intended to replace engineering, financial or primary records research.

Boyd - Nov '21



- Stockton City Limits
- Not Permitted Areas
- Other Not Permitted Area
- Permitted Parcels
- Commercial Cannabis Businesses

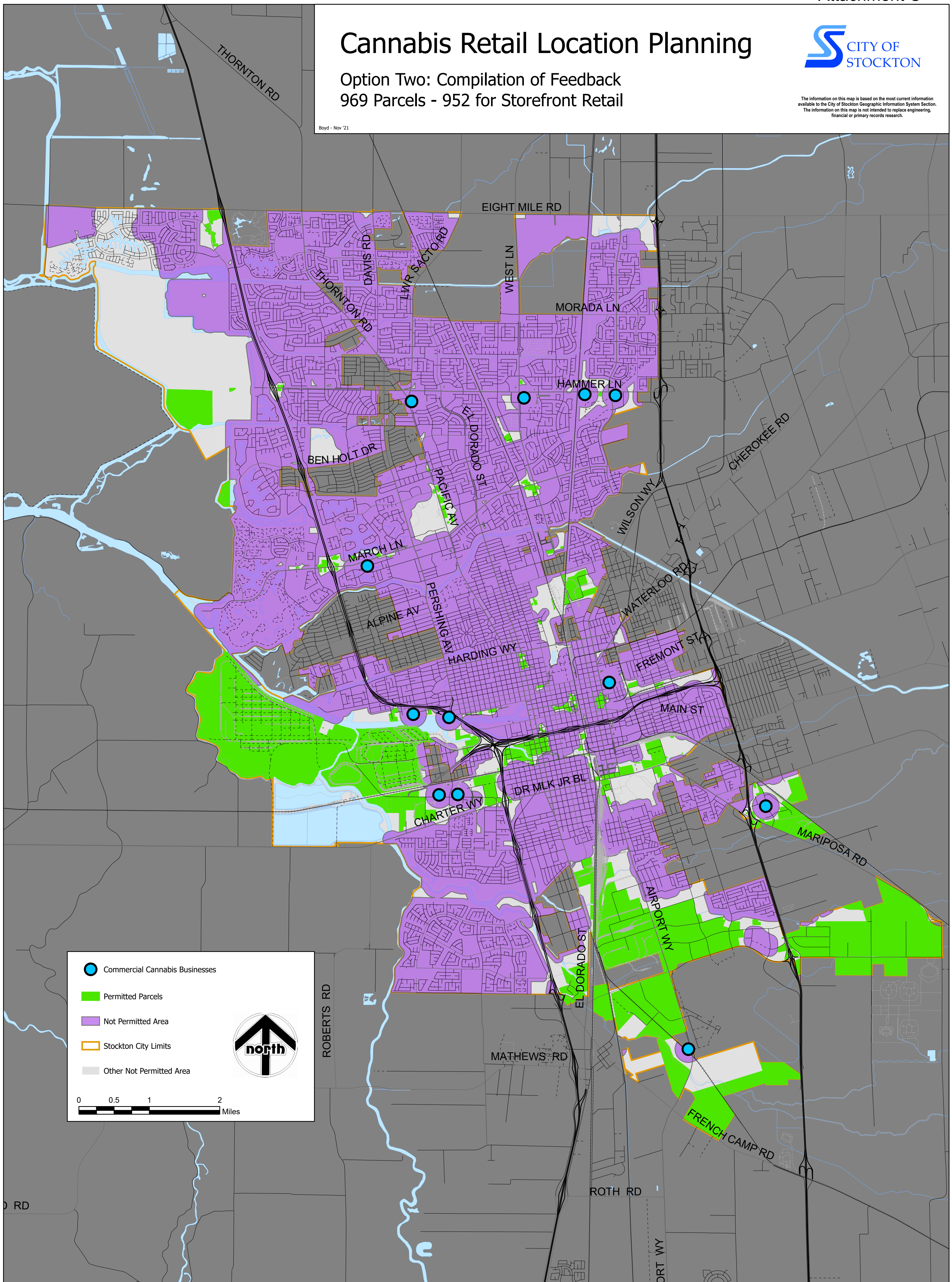


Cannabis Retail Location Planning

Option Two: Compilation of Feedback 969 Parcels - 952 for Storefront Retail

Boyd - Nov '21

The information on this map is based on the most current information available to the City of Stockton Geographic Information System Section. The information on this map is not intended to replace engineering, financial or primary records research.



Commercial Cannabis Businesses
 Permitted Parcels
 Not Permitted Area
 Stockton City Limits
 Other Not Permitted Area

north

0 0.5 1 2 Miles

Cannabis Retail Location Planning

Option Three: State Standard
2,287 Parcels - 2,274 for Storefront Retail

The information on this map is based on the most current information available to the City of Stockton Geographic Information System Section. The information on this map is not intended to replace engineering, financial or primary records research.

Boyd - Nov '21

