

EXHIBIT B

LEGEND:

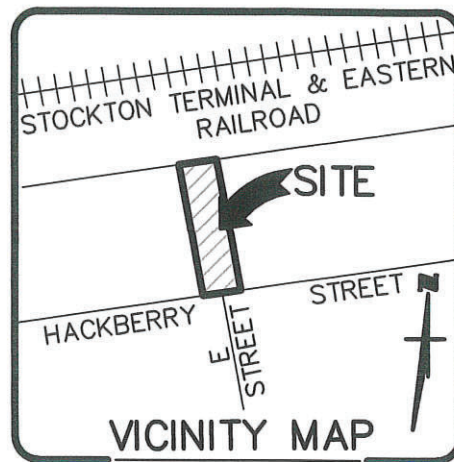
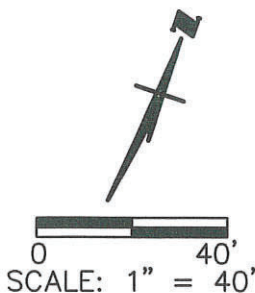
P.O.B. POINT OF BEGINNING  
 M&P MAPS & PLATS, BOOK-PAGE  
 SF SQUARE FEET

REFERENCES:

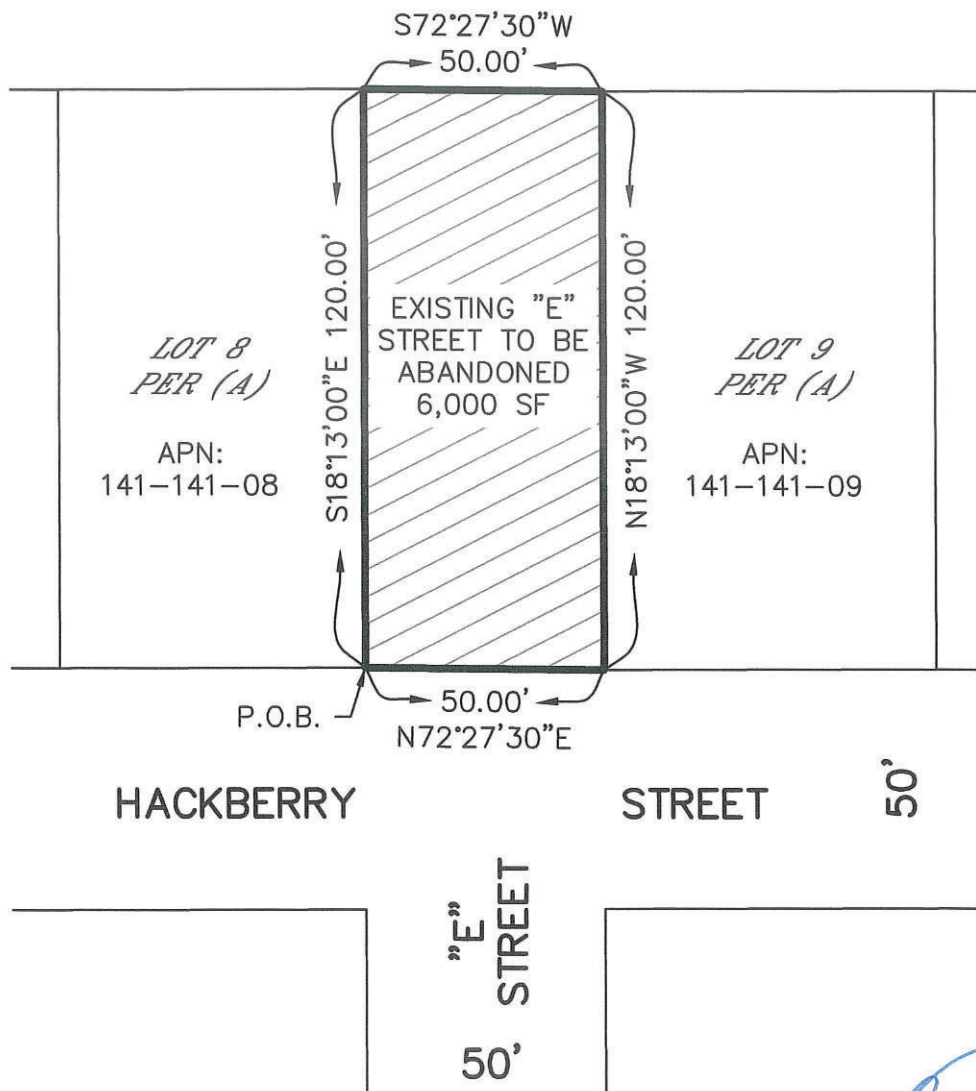
(A) M&P 11-46

NOTES:

- ALL REFERENCES ARE SAN JOAQUIN COUNTY RECORDS.
- A PUBLIC UTILITY EASEMENT SHALL BE RETAINED FOR THE PROPERTY DESCRIBED IN THIS PLAT.



STOCKTON TERMINAL & EASTERN RAILROAD



NO.	REV. DATE	BY	APRVD.	ABANDONMENT OF EXISTING "E" STREET	APPROVED BY	DATE 8/15/22	DRAWING NO. 1 OF 1
DWG. BY WONG ENG., INC.					CITY ENGINEER		
CH. BY				CITY OF STOCKTON DEPARTMENT OF PUBLIC WORKS			
SCALE 1"=40'							

4752A