

# **RWCF Modifications Project East Bank Outfall**

## ***Supplemental Environmental Impact Report***

Water Advisory Group

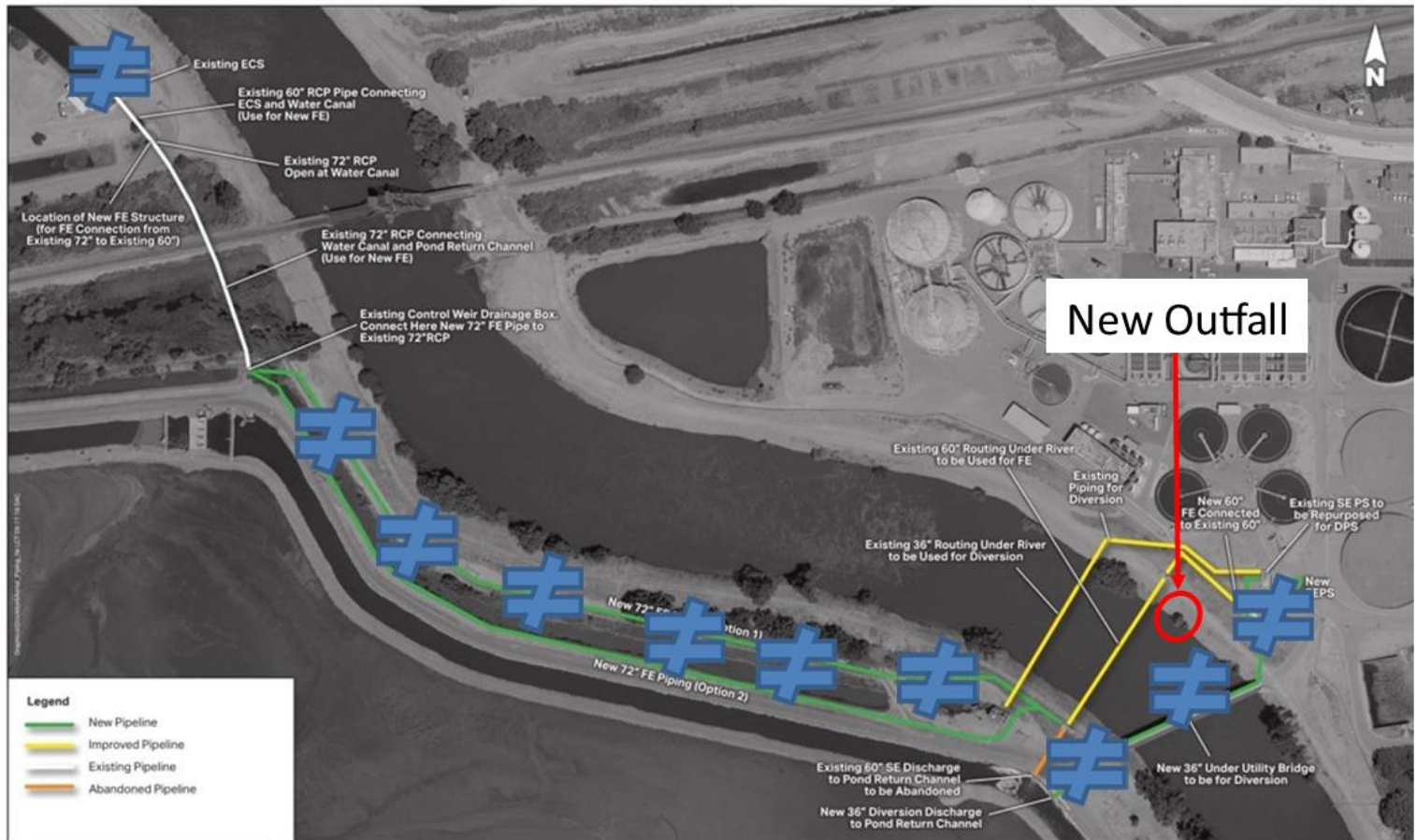
October 5, 2022

Agenda Item No. 4.2

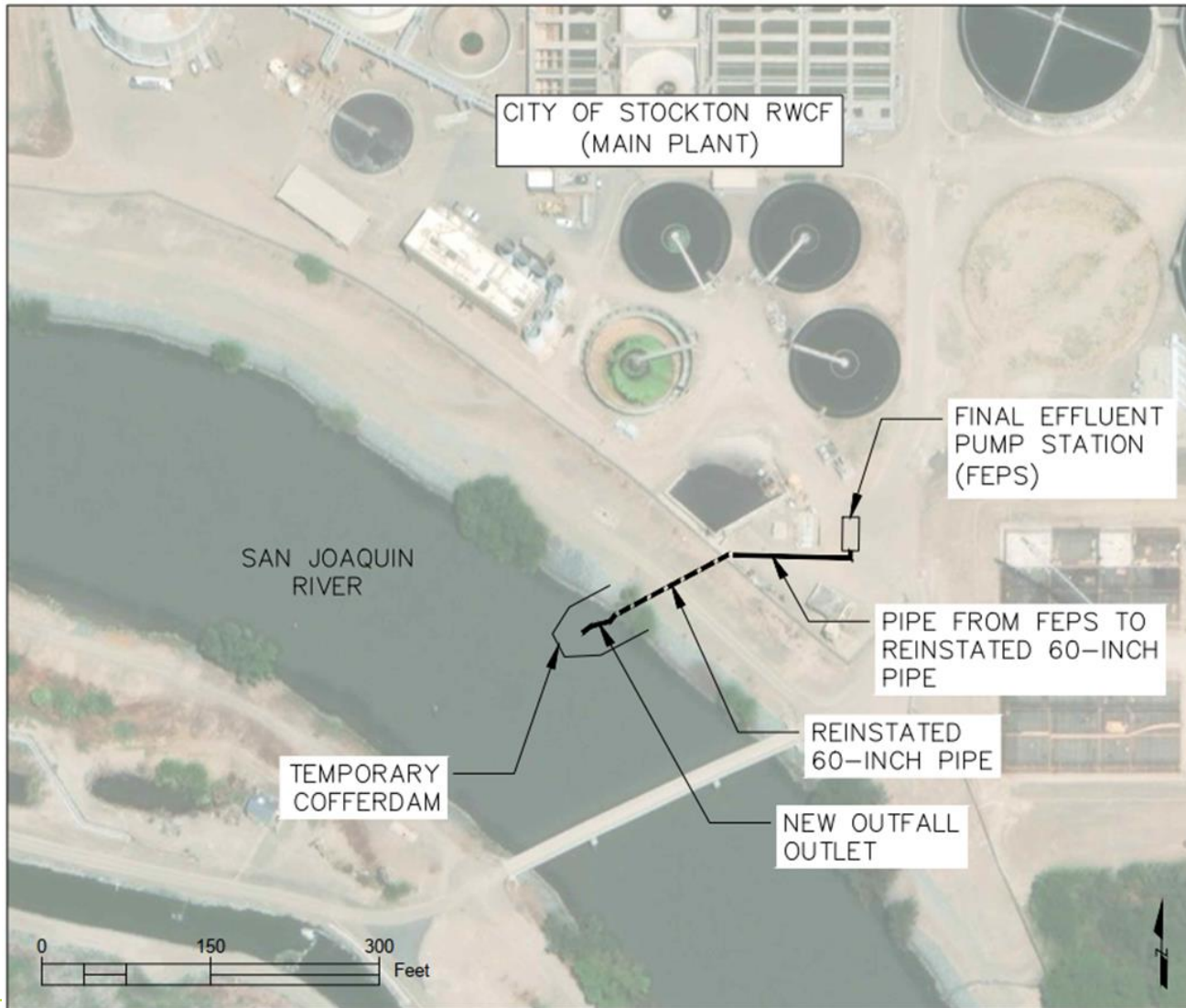
# RWCF Modifications Project Supplemental EIR (SEIR)

- Original EIR
  - Use existing pipelines to convey to existing outfall on west bank
  - CEQA and permitting to proceed to meet schedule
    - EIR certified at July 29, 2019 Council Meeting
  - Install temporary pipelines to serve until new outfall permitted and constructed
  - Temporary solution for approximately five years
- Purpose of East Bank Outfall: Consolidate operations on Main Plant (east side of River)
  - Avoid cost of temporary pipelines and structures of about \$1M
  - Allow gravity discharge more than 90% of time
  - Comply with NPDES Discharge Permit

# Work No Longer Needed (Temporary)



# East Bank Outfall Construction



# East Bank Outfall (EBO) SEIR

- Evaluation

- Located formerly-used outfall pipe through levee (circa 1970s)
- Considered its use for east bank outfall
- Determined acceptable for EBO

- Updated Design

- Pipe suitable for reuse with lining
- Modify Final Effluent Pump Station (FEPS)
- Reroute effluent pipeline to existing outfall pipe
- Extend existing outfall pipe out and down into river

# East Bank Outfall SEIR

- Resources Analysed In the SEIR
  - Hydrology
  - Water Quality
  - Terrestrial Biology
  - Aquatic Biology
- Permitting
  - Central Valley Flood Protection Board (Flood Board)-complete
  - Reclamation District 404 - in progress
  - Corp of Engineers (COE) - in progress
    - Endangered Species Act (ESA): National Marine Fisheries Service (NMFS), Biological Assessment & Biological Opinion
  - California State Lands Commission Lease

# EIR Process

- Notice of Availability 2-25-22
- Comment Period 2-25-22 to 4-11-22
- Final EIR
  - Findings of Fact
  - Mitigation Monitoring and Reporting Program (MMRP)
- Council Consideration of Final EIR

# Findings

- No significant and unavoidable impacts
- Less-than-significant impacts
  - Hydrology
  - Water Quality
- Less-than-significant impacts with mitigation
  - Terrestrial biology
  - Aquatic biology



# East Bank Outfall Supplemental Environmental Impact Report

- Summary of Requested Actions
  - Adopt a resolution to certify that the Final Supplemental Environmental Impact Report (SEIR) prepared for the Regional Wastewater Control Facility (RWCF) Modifications Project has been completed in compliance with the California Environmental Quality Act, and finds the Final EIR adequately addresses the environmental issues of the RWCF Modifications Project
- Adopt the Findings of Fact
- Adopt the Mitigation Monitoring and Reporting Program
- Authorize City Manager to execute a lease agreement with the California State Lands Commission

# Recommendation

Forward Discussion Item to the Council Water Committee for consideration and approval